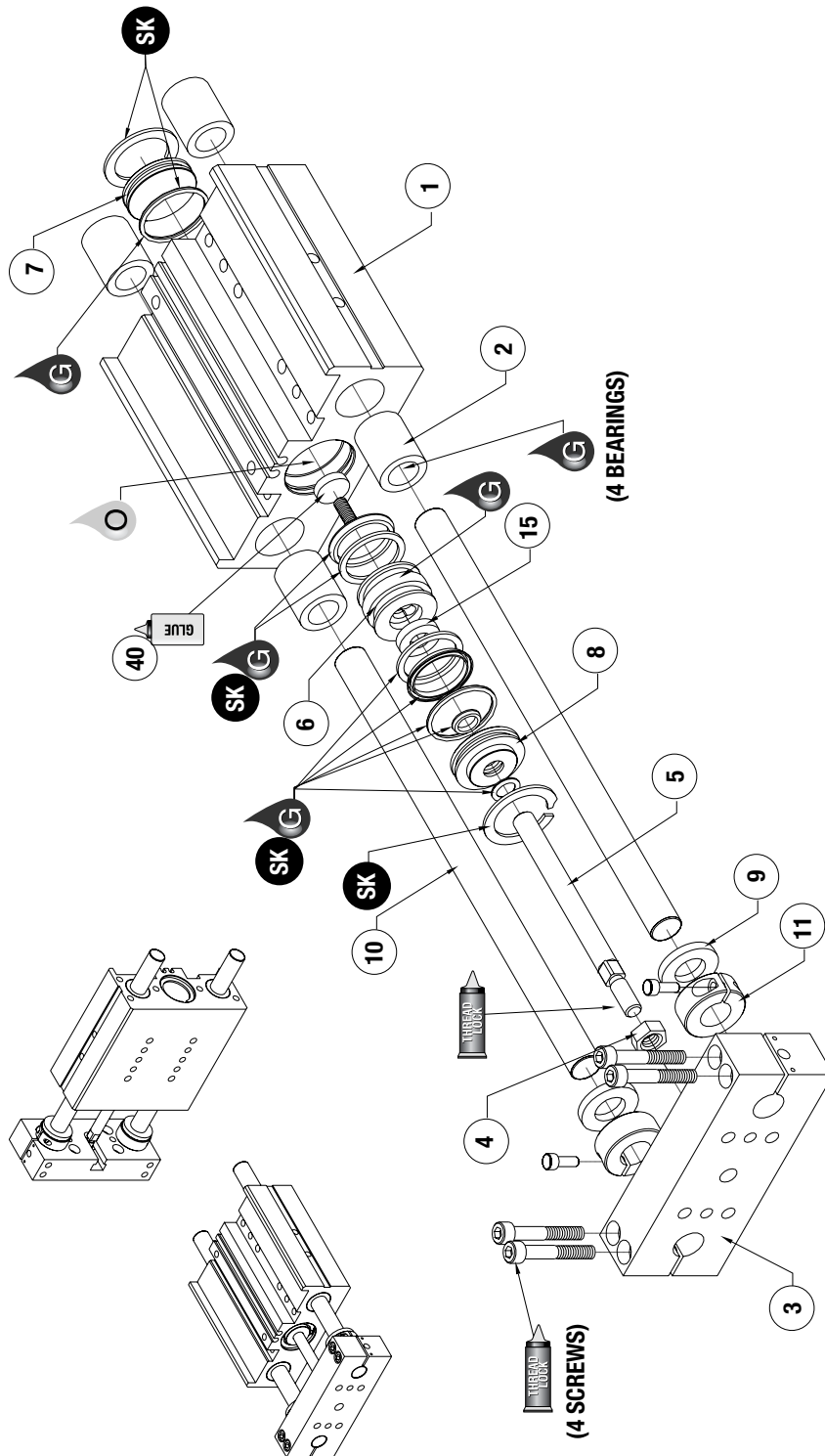


# DLT-B, E, L SERIES

## Linear Slides | Maintenance and Assembly Procedure



Item	Qty	Name
01	1	Body
02	4	Bushing
03	1	Tooling Plate
04	1	Nut, Stover
05	1	Piston Rod
06	1	Piston
07	1	Cap, Plug End
08	1	Cap, Rod End
09	2	Shock Pad,Urethane
10	1	Guide Shaft
11	2	Collar, Split
15	1	Shock Pad, Urethane
40	1	Magnet

**NOTE:** Contact the Robohand Sales Department for a complete spare parts list with order numbers and prices.

### Assembly Procedure

- 1) Lubricate and install seals.
- 2) Attach piston to piston shaft.
- 3) Install magnet on piston.
- 4) Install plug endcap and retaining ring into body.
- 5) Attach piston, piston shaft, and rod end cap to body and install retaining ring.
- 6) Install bearings and shafts into body.
- 7) Attach shock pads and clamp collars to rod end of shafts.
- 8) Install tool plate on rod end of shafts, and attach cylinder rod to plate.
- 9) Adjust clamp collars and fasten them in desired position.

**SK Seal Repair Kit Order #'s See Product Data Sheets**

<b>SK</b> Seal Kit Items	<b>THREAD LOCK</b> Thread Locker	<b>KRYTOX</b> Krytox™ Lubricant	<b>O</b> Lightweight Machine Oil	<b>G</b> Teflon® Based Grease	<b>GLUE</b> Super Bonder	Third Angle Projection
-----------------------------	-------------------------------------	------------------------------------	-------------------------------------	----------------------------------	-----------------------------	------------------------

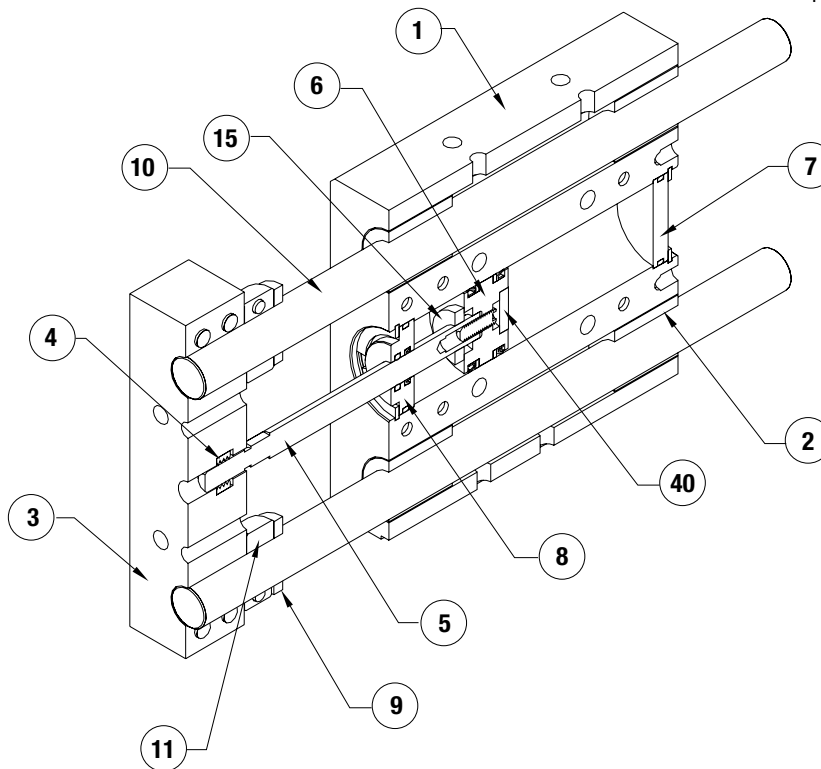
# DLT-B, E, L SERIES

## Linear Slides | Maintenance and Assembly Procedure

Item	Qty	Name
01	1	Body
02	4	Bushing
03	1	Tooling Plate
04	1	Nut, Stover
05	1	Piston Rod
06	1	Piston
07	1	Cap, Plug End
08	1	Cap, Rod End
09	2	Shock Pad,Urethane
10	1	Guide Shaft
11	2	Collar, Split
15	1	Shock Pad, Urethane
40	1	Magnet

**NOTE:** Contact the Robohand Sales Department for a complete spare parts list with order numbers and prices.

**NOTE:** For accessory mounting, see product data sheets



Seal Kit Items	Thread Locker	KRYTOX™ Lubricant	Lightweight Machine Oil	Teflon® Based Grease	Super Bonder	Third Angle Projection