

# 6004-SW SERIES

## Manual Swing Clamps | Product Overview and Dimensions

### Features:

- Left or right swing motion available
- 90° Swing clamp arm motion
- Higher clamping force than pneumatic version
- Though-hole mounting
- Clamp arm can be radially positioned 360°
- Handle can be radially positioned up to 180°

### Applications:

- Assembly
- Checking fixtures
- Welding fixtures
- Tensioning devices

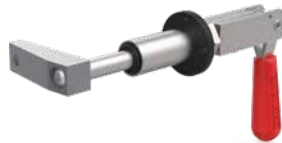
### 6004-SWL

Clamp Arm  
Swing Left

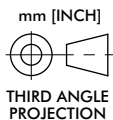
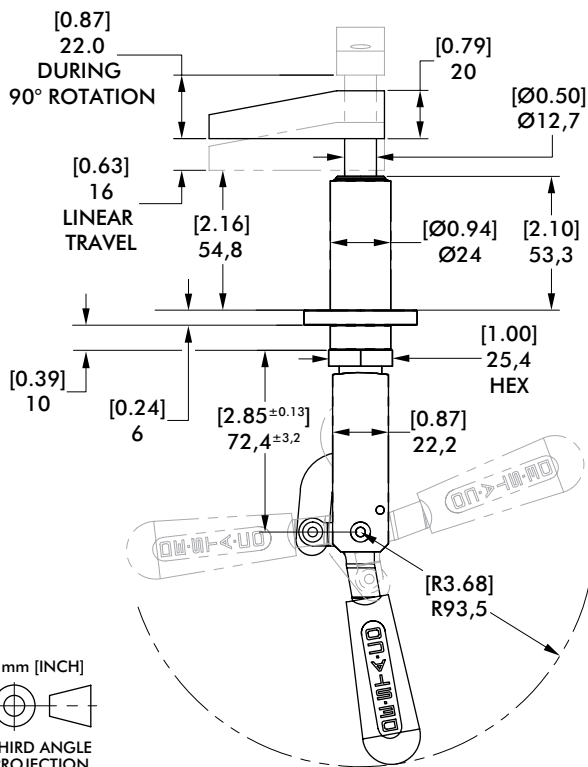
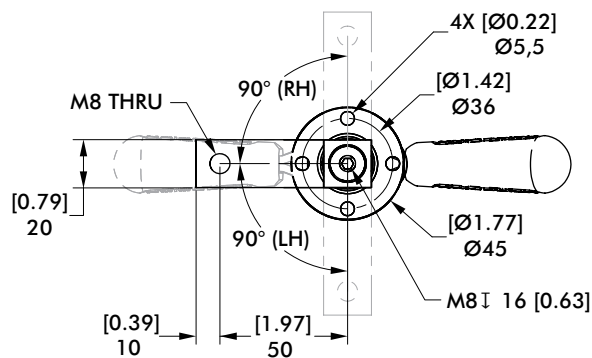


### 6004-SWR

Clamp Arm  
Swing Right



## Technical Information | Holding Capacities | Dimensions



Model	Swing Direction	Total Stroke [in] mm	Stroke During Rotation [in] mm	Stroke Straight Pull [in] mm	Weight [lb] Kg
6004-SWL	LH	[1.50] 38	[0.87] 22	[0.63] 16	[1.32] 0,6
6004-SWR	RH	[1.50] 38	[0.87] 22	[0.63] 16	[1.32] 0,6

Applied Force (on handle) [lbs] N	[40] 178	[30] 133	[20] 89	[10] 44
Plunger Pull Force (straight pull)	[576] 2562	[432] 1922	[288] 1281	[144] 641
Clamp Force (with arm shown below)	[323] 1437	[269] 1197	[189] 841	[108] 480



6004-SWL



6004-SWR