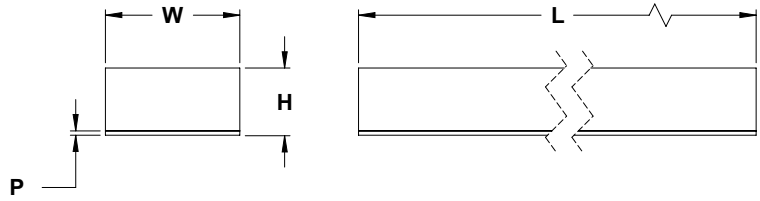
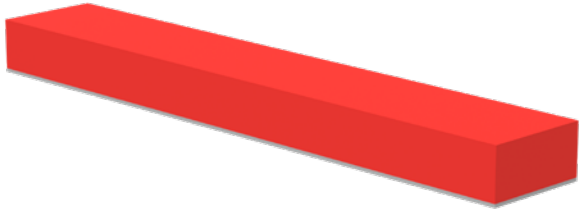


NEST PAD BLOCKS

Round Tooling | Dimensions | Technical Specifications

Bar Stock Urethane

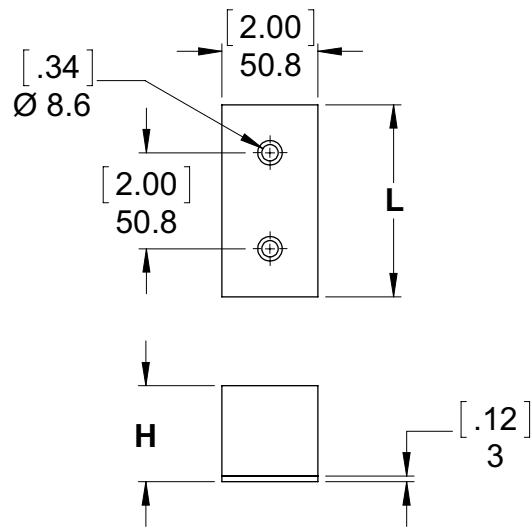
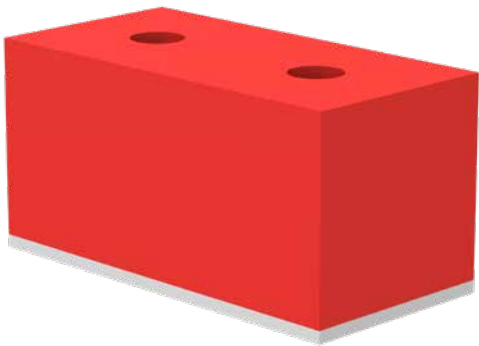


CPI - **BS** - [] - [] - [] - **24** • Length **L 24** 24.00" 609.6 mm

Base Model BS	Overall Height H	Backing Plate Height P	Width W
Bar Stock	1 1.00" 25.4 mm	1/8 0.13" 3.2 mm	1 1.00" 25.4 mm
85 Durometer	2 2.00" 50.8 mm	1/4 0.25" 6.4 mm	2 2.00" 50.8 mm
(Shore A) Urethane	3 3.00" 76.2 mm	3/8 0.38" 9.6 mm	3 3.00" 76.2 mm
	4 4.00" 101.6 mm	1/2 0.50" 12.7 mm	4 4.00" 101.6 mm
	5 5.00" 127 mm	1* 1.00" 25.4 mm	
	6 6.00" 152.4 mm		

*Not available for 1" Overall Height.

Urethane Pads



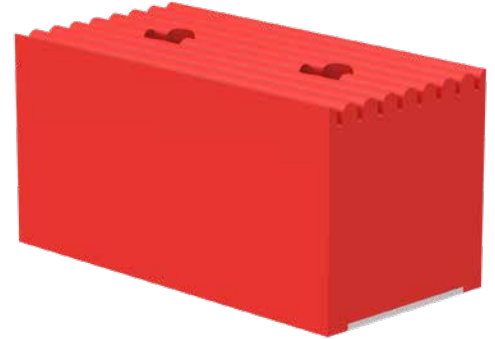
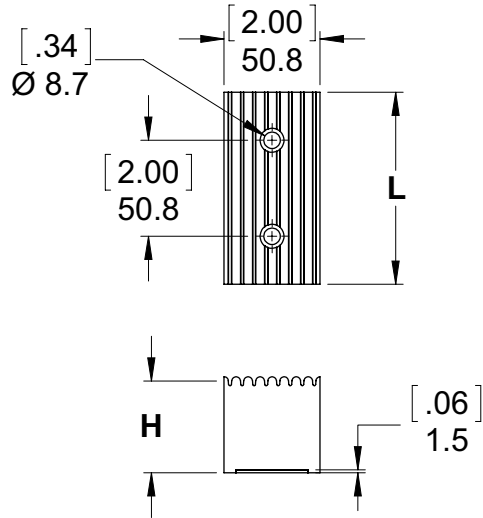
85 Durometer (Shore A) Urethane

Model	"H"	"L"	Weight
CPI-UT-1-4-85	1.00"(in)	4.00"(in)	9oz. [255g]
CPI-UT-2-4-85	2.00"(in)	4.00"(in)	14oz. [397g]
CPI-UT-2-6-85	2.00"(in)	6.00"(in)	19oz. [539g]

NEST PAD BLOCKS

Round Tooling | Dimensions | Technical Specifications

Ribbed Pads Neoprene



Base Model RT	Overall Height H		Length L			Durometer (Shore A)	
Ribbed Pads Neoprene	1/2	0.50" 12.7 mm	4	4.00" 101.6 mm	15	Tan	
	1	1.00" 25.4 mm	6	6.00" 152.4 mm	30	Teal	
	2	2.00" 50.8 mm	8	8.00" 203.2 mm	45	Red	
	3	3.00" 76.2 mm	12	12.00" 304.8 mm	60	Black	
	4	4.00" 101.6 mm					