

Service Manual

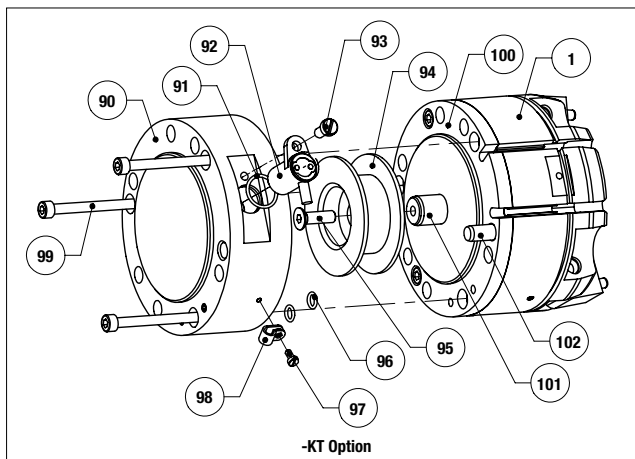
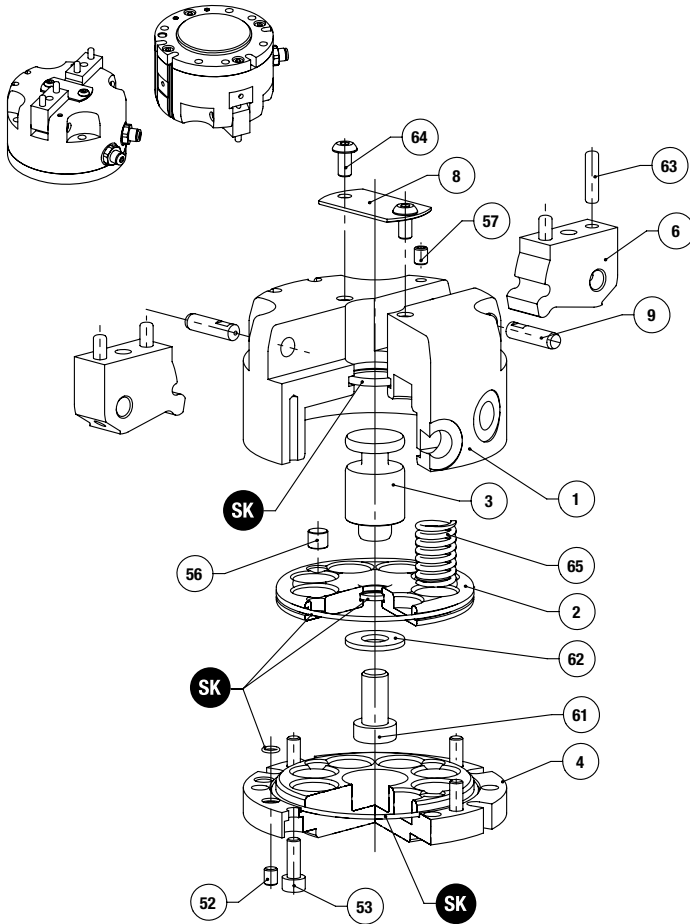
ROBOHAND | RUA Series



WARNING: This is a controlled document. It is your responsibility to deliver this information to the end user of the Destaco Robohand product. Failure to deliver this could result in your liability for injury to the user or damage to the machine. For copies of this manual, call your Customer Service Representative at 1.248.836.6700

RUA SERIES

Parallel Grippers | Maintenance and Assembly Procedure



Item	Qty	Name
01	1	Body
02	1	Piston
03	1	Cam Driver
04	1	Cap
06	2	Jaw
08	1	Shielded case
09	2	Pivot Pin
52	2	SS Screw, Cap
53	4	SHC Screw, Cap
56	1	Magnet
57	2	SS Screw, Body
61	1	SHC Screw, Piston
62	1	Nut, Piston
63	4	Pin, Jaw
64	2	Screw, Shielded case
65	1	Springs
90	1	KT Body
91	1	KT Body, O-Ring
92	1	KT Sensor
93	1	KT Body, Screw
94	1	Target
95	1	Target, Screw
96	2	KT Body, O-Ring
97	1	KT Body, Screw
98	1	Wire Holder
99	3	KT Body, Screw
100	1	Cap for KT Shaft
101	1	Shaft
102	1	KT Body, Pin

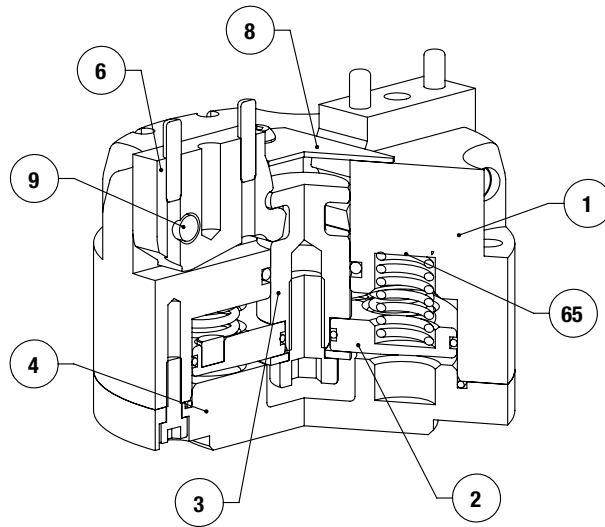
NOTE: Contact the Robohand Sales Department for a complete spare parts list with order numbers and prices.

Assembly Procedure

- Lubricate and install the seals onto the cap (x3), the piston (x2) and the body (x1).
- If top airports are used, remove the plug screws from the cap (#4) and insert into side airports of the body (#1).
- Assemble the piston (#2) and the cam driver (#3) with the washer and the screw.
 - RE option : Place the counterbore holes of the piston on the cam driver side.
 - RI option : Place the counterbore holes of the piston on the screw side.
- Insert the piston into the body. Orientate the piston so that the magnets are placed in front of the body slots.
 - RE option : insert the springs (#65) between the body and the piston in the counterbore holes.
- Place and screw the cap onto the body. The dowel holes of the cap and of the body have to be aligned.
 - RI option : insert the springs (#65) between the cap and the piston in the counterbore holes.
- Lubricate the slots and the jaws (#6) and the groove of the cam driver.
- Place the jaws into the body slot and insert the pivot pin aligning with the jaw hole. The flat of the pivot pin has put in front of the rear side of the body. Screw SS screw into the body to prevent the pivot pin from moving.
- Attach the shielded case.

**SK Seal Repair Kit Order #'s
See Product Data Sheets**

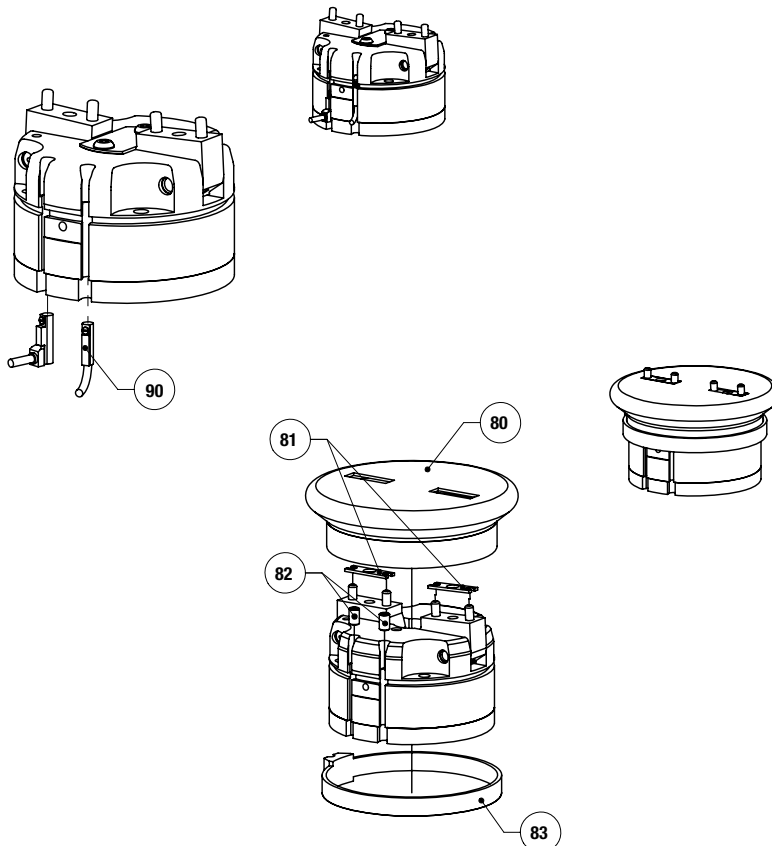
Seal Kit Items	Thread Locker	Krytox™ Lubricant	Lightweight Machine Oil	Teflon® Based Grease	Super Bonder	Third Angle Projection



Item	Qty	Name
01	1	Body
02	1	Piston
03	1	Cam Driver
04	1	Cap
06	2	Jaw
08	1	Shielded case
09	2	Pivot Pin
52	2	SS Screw, Cap
53	4	SHC Screw, Cap
56	1	Magnet
57	2	SS Screw, Body
61	1	SHC Screw, Piston
62	1	Nut, Piston
63	4	Pin, Jaw
64	2	Screw, Shielded case
65	1	Springs

NOTE: Contact the Robohand Sales Department for a complete spare parts list with order numbers and prices.

Accessory Installation & Adjustment Instructions



Installation - MR Sensors

- 1) Insert sensors (#90) for either end of the profile slots
- 2) Set the sensors with the integrated screw

Installation - Boot

- 1) Mount the gripper onto the customer mounting plate
- 2) Insert the spacer (#81) into the pins of the jaws
- 3) Insert sensor slot plugs (#82) into sensor mounting groove. Install the boot (#80) on the gripper. The jaw opening of the boot has to fit with the spacer. Insert lip of boot seal into the groove of the gripper
- 4) Use the clamping ring (#83) to fasten the boot on the gripper
- 5) Attach fingers to the jaws (ensure that boot is sealed between the jaws and the finger)



Seal Kit Items



Thread Locker



Krytox™ Lubricant



Lightweight Machine Oil



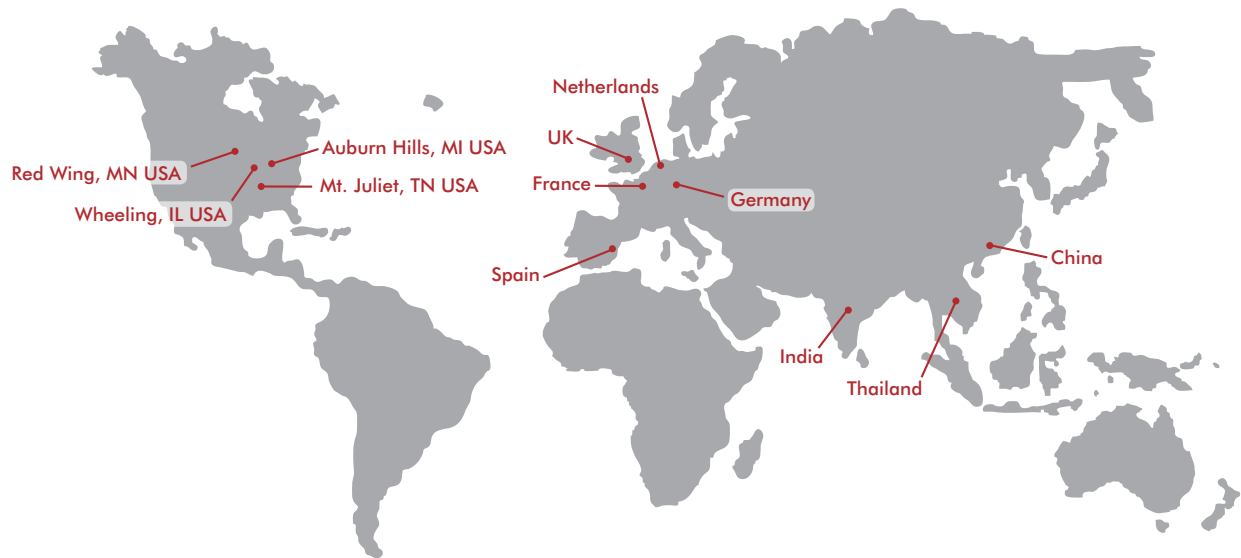
Teflon® Based Grease



Super Bonder



Third Angle Projection



GLOBAL LOCATIONS

NORTH AMERICA

Corporate Headquarters

Auburn Hills, Michigan
Toll Free: 1.888.DESTACO
Marketing: marketing@destaco.com

Global Technology Center

Auburn Hills, Michigan
Tel: 1.248.836.6700
Customer Service: customerservice@destaco.com

Mt. Juliet, Tennessee
Tel: 1.888.DESTACO
Customer Service: customerservice@destaco.com

Wheeling, Illinois
Tel: 1.800.645.5207
Customer Service: camco@destaco.com

Red Wing, Minnesota (Central Research Laboratories)
Tel: 651.385.2142
Customer Service: sales@centres.com

ASIA

Bangkok, Thailand
Tel: +66-2-326-0812
Customer Service: info@destaco.com

Shanghai, China
Tel: +86-21-6081-2888
Customer Service: china@destaco.com

Bangalore, India
Tel: +91-80-41123421-426
Customer Service: india@destaco.com

EUROPE

Oberursel, Germany
Tel: +49-6171-705-0
Customer Service: europe@destaco.com

Sainte Florine, France
Tel: +33-4-73545001
Customer Service: france@destaco.com

Wolverhampton, United Kingdom
Tel: +44-1902-797980
Customer Service: uk@destaco.com

Sant Boi de Llobregat, Spain
Tel: +34-936361680
Customer Service: spain@destaco.com

Uithoorn, Netherlands
Tel: +31-297285332
Customer Service: benelux@destaco.com