

## Service Manual

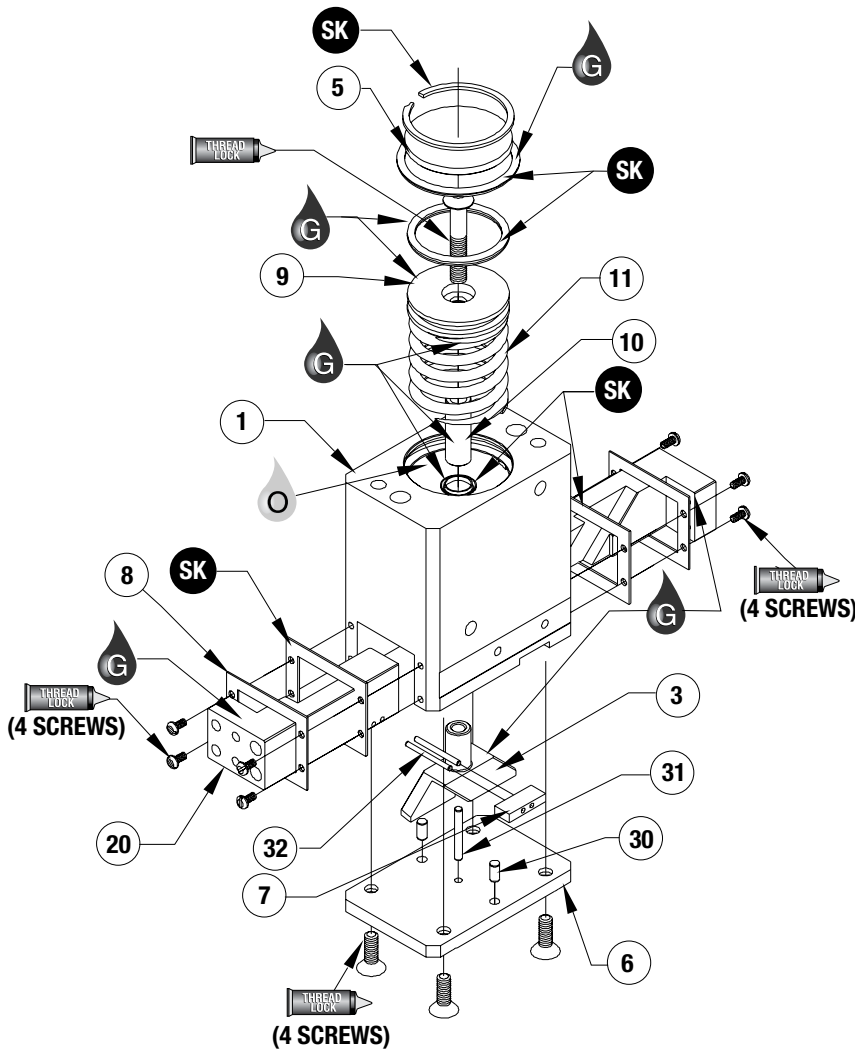
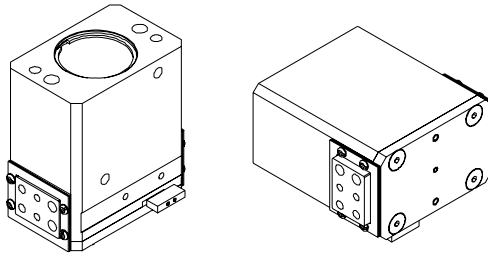
### **ROBOHAND** | RPS Series



**WARNING:** This is a controlled document. It is your responsibility to deliver this information to the end user of the Destaco Robohand product. Failure to deliver this could result in your liability for injury to the user or damage to the machine. For copies of this manual, call your Customer Service Representative at 1.248.836.6700

# RPS SERIES

## Parallel Grippers | Maintenance and Assembly Procedure



Item Qty	Name
01	1 Body
03	1 Shaft/Wedge
05	1 Cap
06	1 Plate, Bottom
07	1 Target
08	2 Plate, Seal
09	1 Piston
10*	1 Extension, Shaft
11	1 Spring
20	2 Jaw, Target Ready
30	2 Dowel Pin
31	1 Dowel Pin
32	2 Roll Pin

\* -C Only

**NOTE:** Contact the Robohand Sales Department for a complete spare parts list with order numbers and prices.

### Assembly Procedure

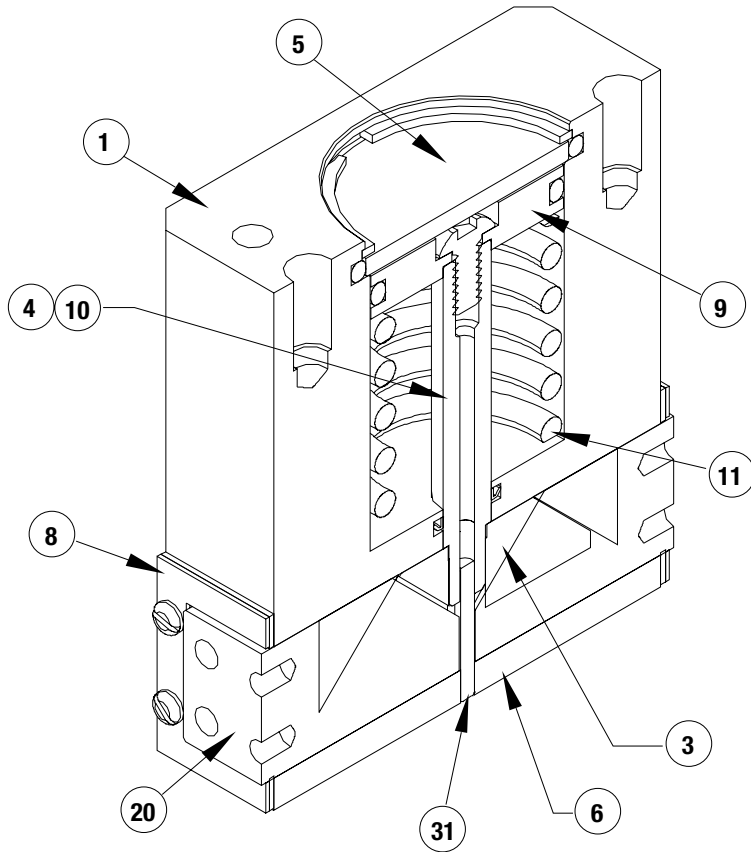
- 1) Lubricate and install seals
- 2) Install target on one jaw
- 3) Place wedge, shaft, and jaws into body
- 4) Install piston and spring into body
- 5) Install cap and retaining ring
- 6) Attach bottom plate to body

**NOTE:** -C Mode Shown

**SK Seal Repair Kit Order #'s See Product Data Sheets**

**SAFETY WARNING: USE CAUTION WHEN ASSEMBLING AND DISASSEMBLING. GRIPPER CONTAINS COMPRESSION SPRING UNDER FORCE.**

**SAFETY WARNING: USE CAUTION WHEN ASSEMBLING AND DISASSEMBLING.  
GRIPPER CONTAINS COMPRESSION SPRING UNDER FORCE.**



Item	Qty	Name
------	-----	------

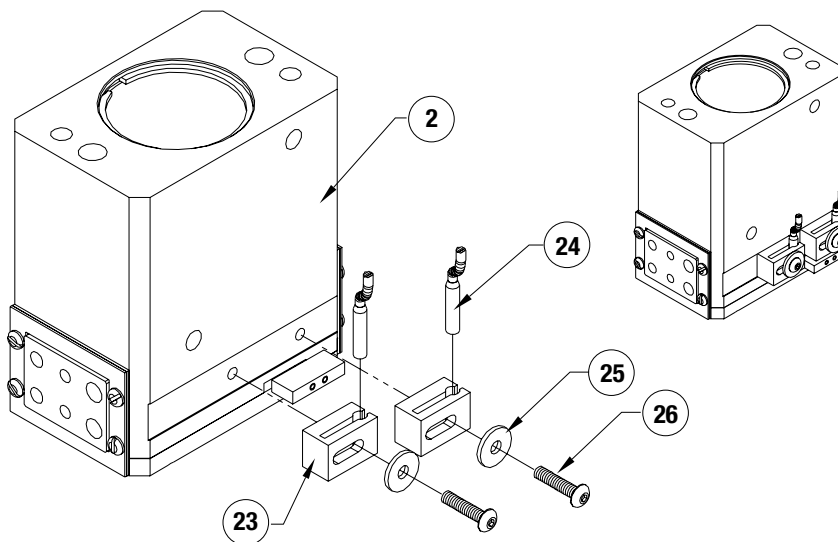
01	1	Body
03	1	Shaft/Wedge
05	1	Cap
06	1	Plate, Bottom
07	1	Target
08	2	Plate, Seal
09	1	Piston
10*	1	Extension, Shaft
11	1	Spring
20	2	Jaw, Target Ready
30	2	Dowel Pin
31	1	Dowel Pin
32	2	Roll Pin

\* -C Only

**NOTE:** Contact the Robohand Sales Department for a complete spare parts list with order numbers and prices.

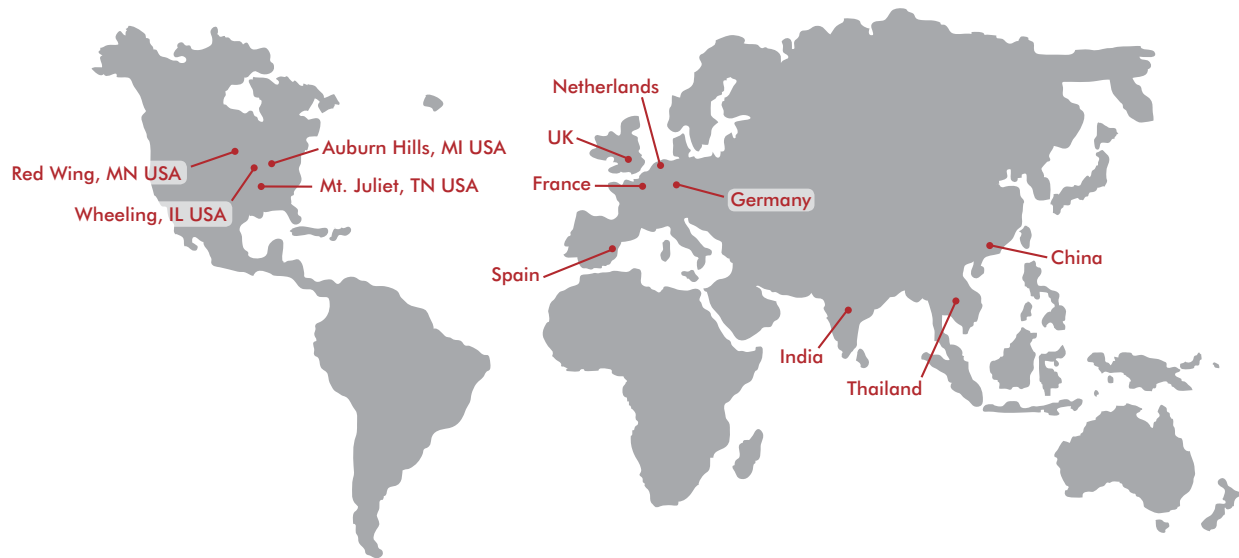
**NOTE:** -C Mode Shown.

### Accessory Installation & Adjustment Instructions



#### Installation

1. Install sensors as shown.
2. Adjust for end stroke sensing.



## GLOBAL LOCATIONS

### NORTH AMERICA

#### Corporate Headquarters

Auburn Hills, Michigan  
Toll Free: 1.888.DESTACO  
Marketing: [marketing@destaco.com](mailto:marketing@destaco.com)

#### Global Technology Center

Auburn Hills, Michigan  
Tel: 1.248.836.6700  
Customer Service: [customerservice@destaco.com](mailto:customerservice@destaco.com)

Mt. Juliet, Tennessee  
Tel: 1.888.DESTACO  
Customer Service: [customerservice@destaco.com](mailto:customerservice@destaco.com)

Wheeling, Illinois  
Tel: 1.800.645.5207  
Customer Service: [camco@destaco.com](mailto:camco@destaco.com)

Red Wing, Minnesota (Central Research Laboratories)  
Tel: 651.385.2142  
Customer Service: [sales@centres.com](mailto:sales@centres.com)

### ASIA

Bangkok, Thailand  
Tel: +66-2-326-0812  
Customer Service: [info@destaco.com](mailto:info@destaco.com)

Shanghai, China  
Tel: +86-21-6081-2888  
Customer Service: [china@destaco.com](mailto:china@destaco.com)

Bangalore, India  
Tel: +91-80-41123421-426  
Customer Service: [india@destaco.com](mailto:india@destaco.com)

### EUROPE

Oberursel, Germany  
Tel: +49-6171-705-0  
Customer Service: [europe@destaco.com](mailto:europe@destaco.com)

Sainte Florine, France  
Tel: +33-4-73545001  
Customer Service: [france@destaco.com](mailto:france@destaco.com)

Wolverhampton, United Kingdom  
Tel: +44-1902-797980  
Customer Service: [uk@destaco.com](mailto:uk@destaco.com)

Sant Boi de Llobregat, Spain  
Tel: +34-936361680  
Customer Service: [spain@destaco.com](mailto:spain@destaco.com)

Uithoorn, Netherlands  
Tel: +31-297285332  
Customer Service: [benelux@destaco.com](mailto:benelux@destaco.com)