

## Service Manual

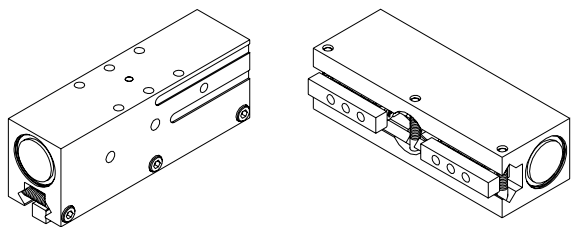
### **ROBOHAND** | RPL/RPLC Series



WARNING: This is a controlled document. It is your responsibility to deliver this information to the end user of the Destaco Robohand product. Failure to deliver this could result in your liability for injury to the user or damage to the machine. For copies of this manual, call your Customer Service Representative at 1.248.836.6700

# RPL SERIES

## Parallel Grippers | Maintenance and Assembly Procedure



Item	Qty	Name
01	1	Body
02	1	Piston
03	2	Cap
04	1	Equalizer
05	2	Link
06	4	Way
08	2	Jaw
13	2	Pin
20	1	Piston W/Magnet Slot
21	4	S'assy,Cage & Rollers
30	3	SHCS
31	1	Dowel Pin
32	2	Dowel Pin
40	2	Magnet

**NOTE:** Contact the Robohand Sales Department for a complete spare parts list with order numbers and prices.

### Assembly Procedure

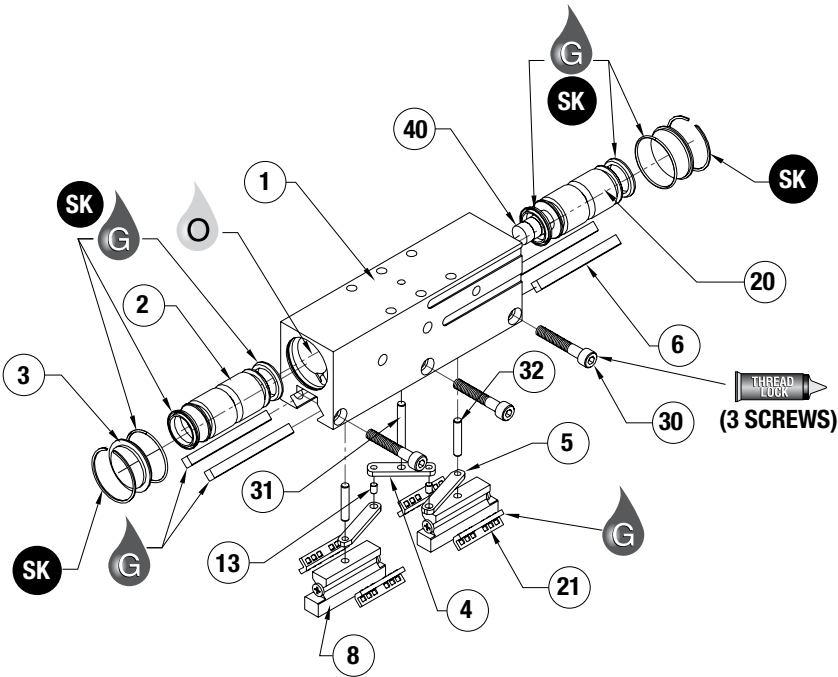
- 1) Lubricate and install seals.
- 2) Press dowel pin into center of body.
- 3) Place links and equalizers into body.
- 4) Press dowel pins into jaws.
- 5) Place jaws through links and into pistons.
- 6) Install cages on jaws.
- 7) Place ways behind cages with flat facing out and install screws.
- 8) Adjust preload.

### Preload Adjustment Procedure

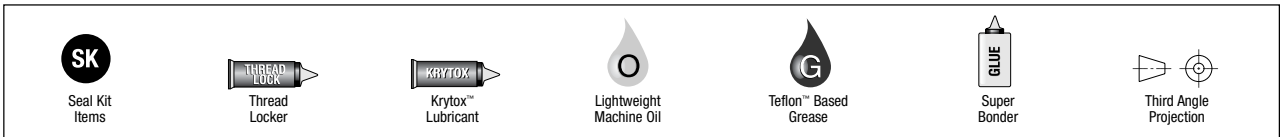
- 1) Tighten center screw (#30) so that fingers bind slightly.
- 2) Tighten outer screws in the same fashion.
- 3) Cycle the gripper.
- 4) Re-adjust screws so that when you push the cage, the finger moves freely. (the finger movement should not feel gritty.)

### Non-Synchronous Procedure

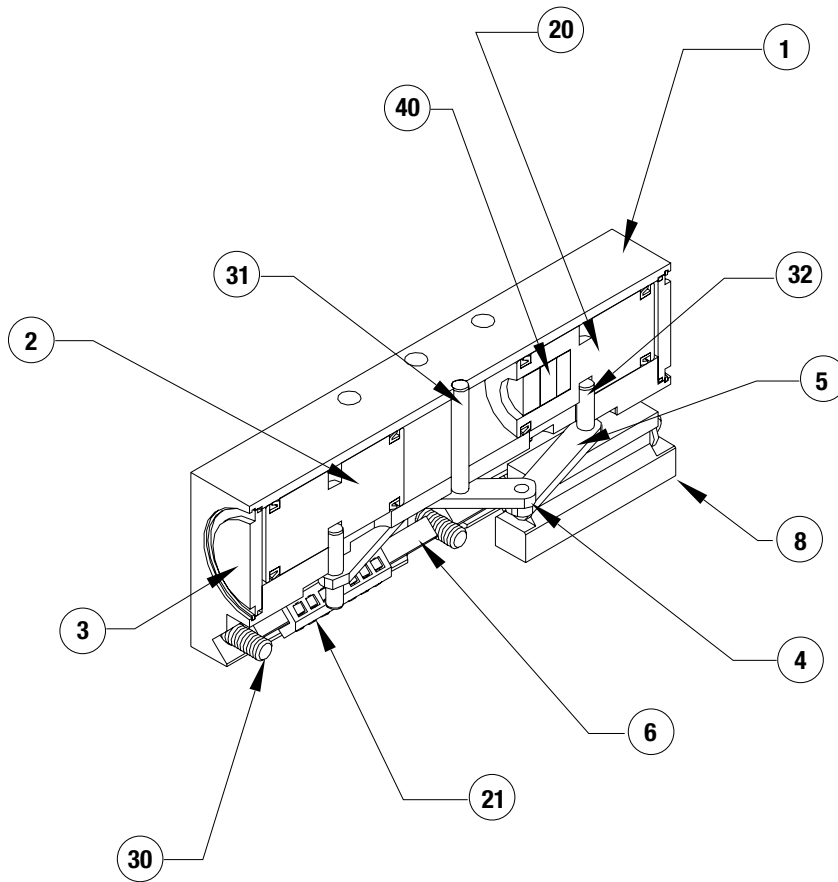
- 1) Remove preload screws (#30) and ways.
- 2) Remove cages, jaws and dowel pins.
- 3) Remove equalizer, links, and roller bearings.
- 4) Re-assemble jaws and dowel pins into pistons.
- 5) Re-install cages on jaws.
- 6) Place ways behind cages with flat facing out and install preload screws.
- 7) Adjust preload.



**SK Seal Repair Kit Order #'s  
See Product Data Sheets**



## Parallel Grippers | Maintenance and Assembly Procedure



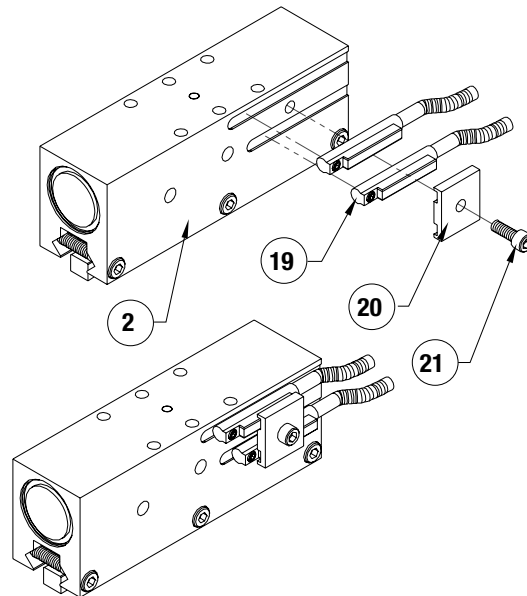
Item	Qty	Name
01	1	Body
02	1	Piston
03	2	Cap
04	1	Equalizer
05	2	Link
06	4	Way
08	2	Jaw
13	2	Bearing,Roller
20	1	Piston W/Magnet Slot
21	4	S'assy,Cage & Rollers
30	3	SHCS
31	1	Dowel Pin
32	2	Dowel Pin
40	2	Magnet

**NOTE:** Contact the Robohand Sales Department for a complete spare parts list with order numbers and prices.

## Accessory Installation & Adjustment Instructions

### Installation

1. Install sensors as shown.
2. Adjust for desired end of stroke detection.



Seal Kit  
Items



Thread  
Locker



Krytox™  
Lubricant



Lightweight  
Machine Oil



Teflon™ Based  
Grease



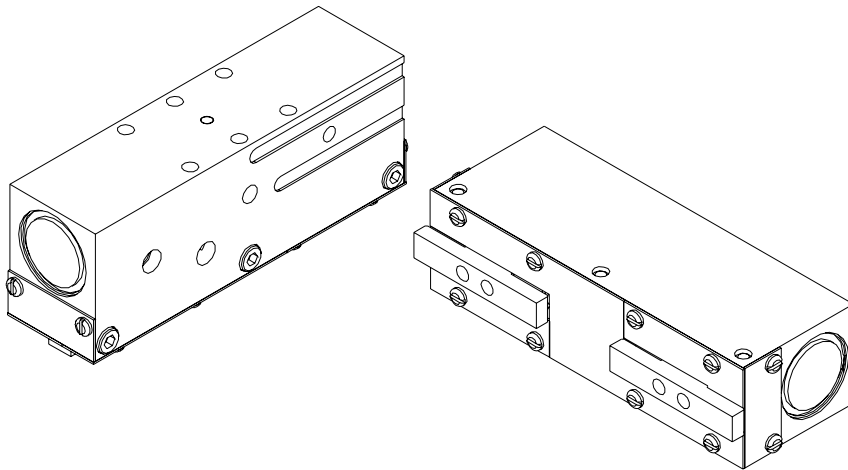
Super  
Bonder



Third Angle  
Projection

# RPLC SERIES

## Parallel Grippers | Maintenance and Assembly Procedure



Item	Qty	Name
01	1	Body
02	1	Piston
03	2	Cap
04	1	Equalizer
05	2	Link
06	4	Way
08	2	Jaw
10	1	Cover, Bottom
11	2	Cover, Bottom, Corners
12	2	Cover, End
13	2	Bearing, Roller
20	1	Piston W/Magnet Slot
21	4	S'assy, Cage & Rollers
30	3	SHCS
31	1	Dowel Pin
32	2	Dowel Pin
40	2	Magnet

**Note:** contact the robohand sales department for a complete spare parts list with order numbers and prices.

### Assembly procedure

- 1) Lubricate and install seals.
- 2) Glue magnets into one piston, install pistons, caps and retaining rings.
- 3) Press dowel pin into center of body.
- 4) Place links and equalizers into body.
- 5) Press dowel pins into jaws.
- 6) Place jaws through links and into pistons.
- 7) Install cages on jaws.
- 8) Place ways behind cages with flat facing out and install screws.
- 9) Adjust preload.
- 10) Install bottom cover, bottom cover corners and end covers.

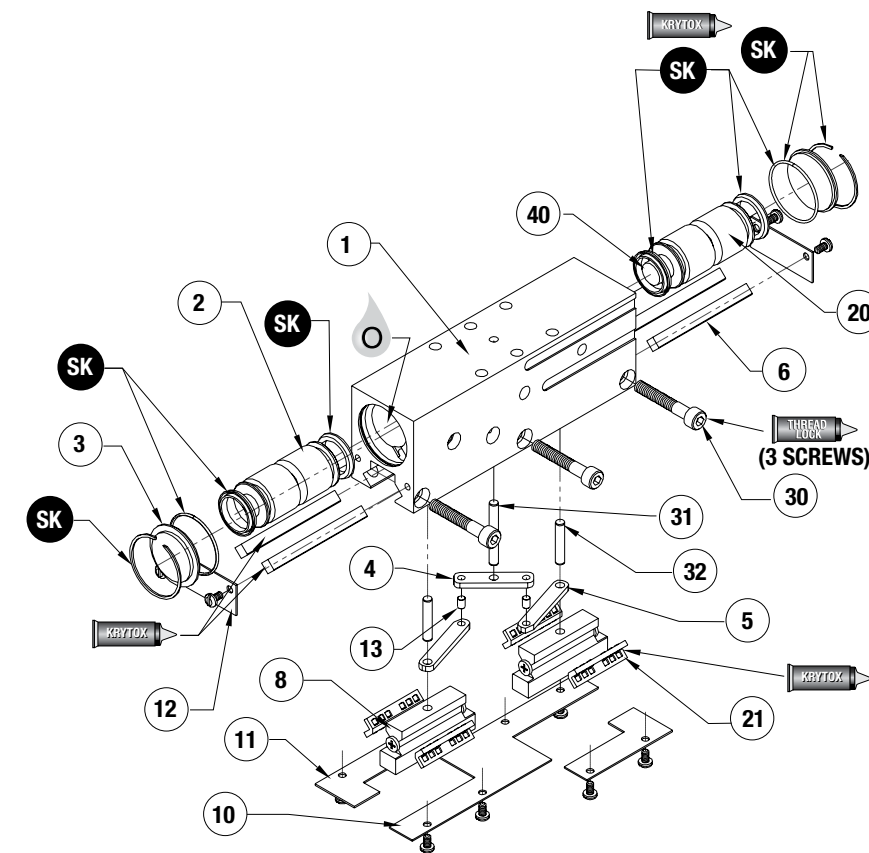
### Preload adjustment procedure

- 1) Tighten center screw (#30) so that fingers preload adjustment procedure
- 2) Tighten outer screws in the same fashion. Bind slightly.
- 3) Cycle the gripper.
- 4) Re-adjust screws so that when you push the cage, the finger moves freely. (the finger movement should not feel gritty.)

### Non-synchronous procedure

- 1) Remove end covers, bottom cover corners, and bottom cover.
- 2) Remove preload screws (#30) and ways.
- 3) Remove cages, jaws and dowel pins.
- 4) Remove equalizer, links, and roller bearings.
- 5) Re-assemble jaws and dowel pins into pistons.
- 6) Re-install cages on jaws.
- 7) Place ways behind cages with flat facing out and
- 8) Adjust preload. Install preload screws.
- 9) Re-attach bottom cover, bottom cover corners and end covers. Gripper is now non-synchronous.

**SK Seal Repair Kit Order #'s**  
**See Product Data Sheets**



Seal Kit  
Items



Thread  
Locker



Krytox™  
Lubricant



Lightweight  
Machine Oil



Teflon® Based  
Grease

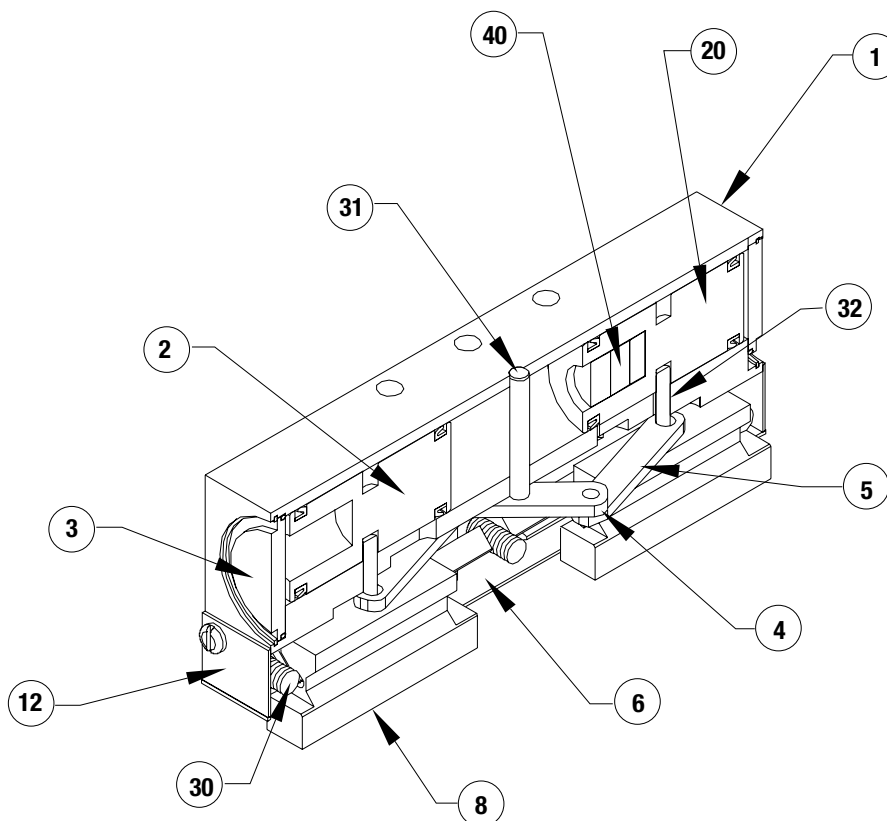


Super  
Bonder



Third Angle  
Projection

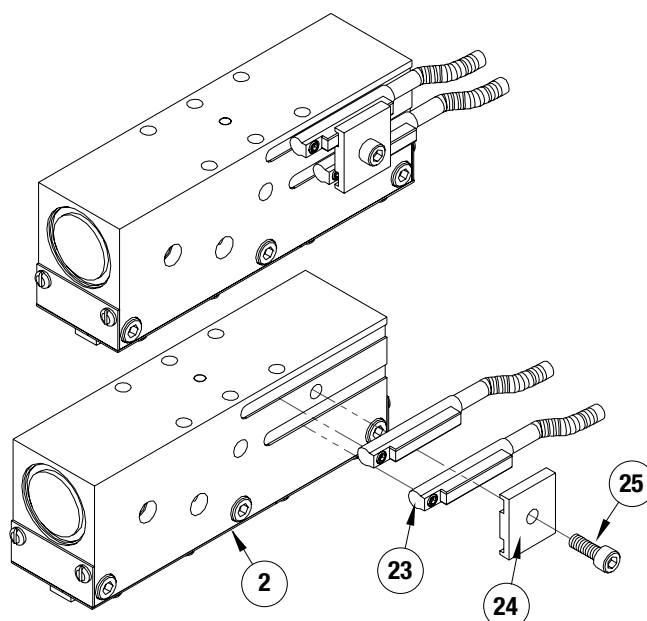
## Parallel Grippers | Maintenance and Assembly Procedure



Item	Qty	Name
01	1	Body
02	1	Piston
03	2	Cap
04	1	Equalizer
05	2	Link
06	4	Way
08	2	Jaw
10	1	Cover, Bottom
11	2	Cover, Bottom, Corners
12	2	Cover, End
13	2	Bearing, Roller
20	1	Piston W/Magnet Slot
21	4	S'assy, Cage & Rollers
30	3	SHCS
31	1	Dowel Pin
32	2	Dowel Pin
40	2	Magnet

**Note:** contact the robohand sales department for a complete spare parts list with order numbers and prices.

## Accessory Installation & Adjustment Instructions



### Installation

- 1) Install sensors as shown.
- 2) Adjust for desired end of stroke detection.



Seal Kit  
Items



Thread  
Locker



Krytox™  
Lubricant



Lightweight  
Machine Oil



Teflon® Based  
Grease



Super  
Bonder



Third Angle  
Projection



## GLOBAL LOCATIONS

### NORTH AMERICA

#### Corporate Headquarters

Auburn Hills, Michigan  
Toll Free: 1.888.DESTACO  
Marketing: [marketing@destaco.com](mailto:marketing@destaco.com)

#### Global Technology Center

Auburn Hills, Michigan  
Tel: 1.248.836.6700  
Customer Service: [customerservice@destaco.com](mailto:customerservice@destaco.com)

Mt. Juliet, Tennessee  
Tel: 1.888.DESTACO  
Customer Service: [customerservice@destaco.com](mailto:customerservice@destaco.com)

Wheeling, Illinois  
Tel: 1.800.645.5207  
Customer Service: [camco@destaco.com](mailto:camco@destaco.com)

Red Wing, Minnesota (Central Research Laboratories)  
Tel: 651.385.2142  
Customer Service: [sales@centres.com](mailto:sales@centres.com)

### ASIA

Bangkok, Thailand  
Tel: +66-2-326-0812  
Customer Service: [info@destaco.com](mailto:info@destaco.com)

Shanghai, China  
Tel: +86-21-6081-2888  
Customer Service: [china@destaco.com](mailto:china@destaco.com)

Bangalore, India  
Tel: +91-80-41123421-426  
Customer Service: [india@destaco.com](mailto:india@destaco.com)

### EUROPE

Oberursel, Germany  
Tel: +49-6171-705-0  
Customer Service: [europe@destaco.com](mailto:europe@destaco.com)

Sainte Florine, France  
Tel: +33-4-73545001  
Customer Service: [france@destaco.com](mailto:france@destaco.com)

Wolverhampton, United Kingdom  
Tel: +44-1902-797980  
Customer Service: [uk@destaco.com](mailto:uk@destaco.com)

Sant Boi de Llobregat, Spain  
Tel: +34-936361680  
Customer Service: [spain@destaco.com](mailto:spain@destaco.com)

Uithoorn, Netherlands  
Tel: +31-297285332  
Customer Service: [benelux@destaco.com](mailto:benelux@destaco.com)