

Service Manual

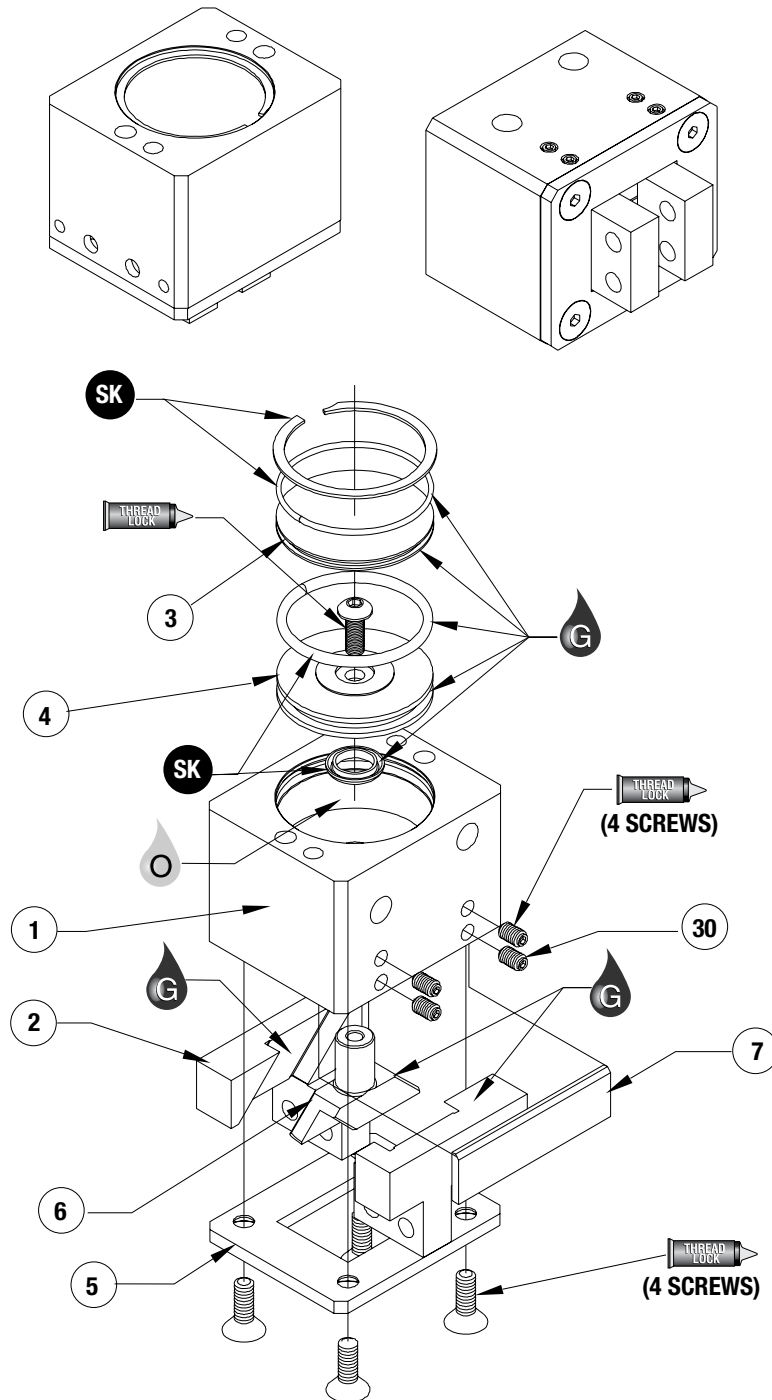
ROBOHAND | RP Series



WARNING: This is a controlled document. It is your responsibility to deliver this information to the end user of the Destaco Robohand product. Failure to deliver this could result in your liability for injury to the user or damage to the machine. For copies of this manual, call your Customer Service Representative at 1.248.836.6700

RP-5, 10 SERIES

Parallel Grippers | Maintenance and Assembly Procedure



Item	Qty	Name
01	1	Body
02	2	Jaw
03	1	Cap
04	1	Piston
05	1	Plate,Bottom
06	1	Shaft/Wedge
07*	1	Gib
30*	4	SSS,Cup Point

* RP-10 Only

NOTE: Contact the Robohand Sales Department for a complete spare parts list with order numbers and prices.

Assembly Procedures

- 1) Lubricate and install seals.
- 2) Install piston into body.
- 3) Place wedge, jaws, and gib plate into body.
- 4) Attach bottom plate to body.
- 5) Install cap and retaining ring.

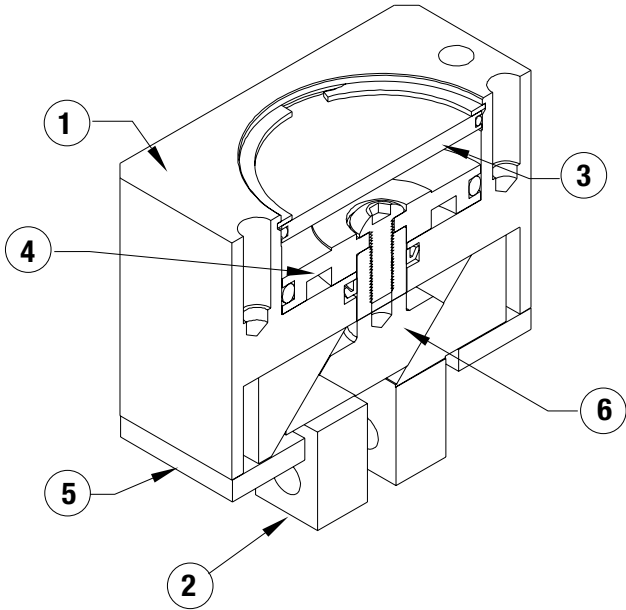
Gib Adjustment Procedure

- 1) Tighten set screws (#30) so that they just touch the gib plate.
- 2) Cycle the gripper.
- 3) Adjust screws so that there is no play in jaws.

SK Seal Repair Kit Order #'s See Product Data Sheets

RP-5, 10 SERIES

Parallel Grippers | Maintenance and Assembly Procedure

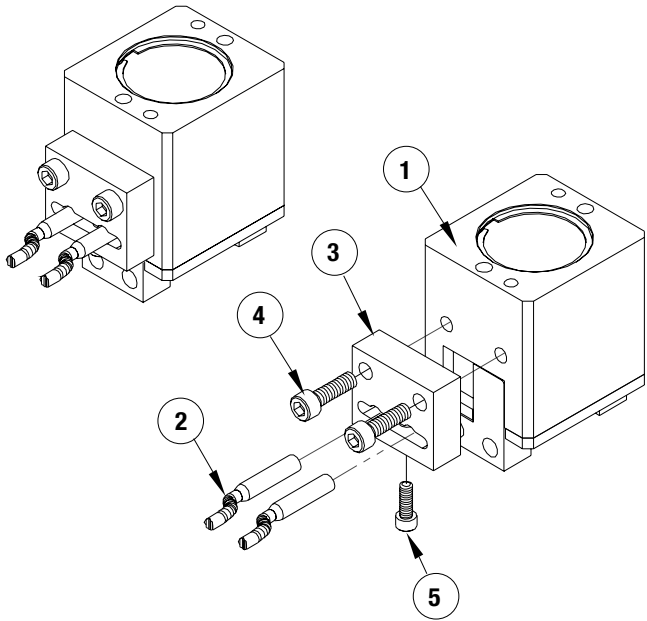


Item	Qty	Name
01	1	Body
02	2	Jaw
03	1	Cap
04	1	Piston
05	1	Plate, Bottom
06	1	Shaft/Wedge
07*	1	Gib
30*	4	SSS, Cup Point

* RP-10 Only

NOTE: Contact the Robohand Sales Department for a complete spare parts list with order numbers and prices.

Accessory Installation & Adjustment Instructions



RP-11, 12, 15, 17, 18, 19 SERIES

Parallel Grippers | Maintenance and Assembly Procedure

Item Qty	Name
----------	------

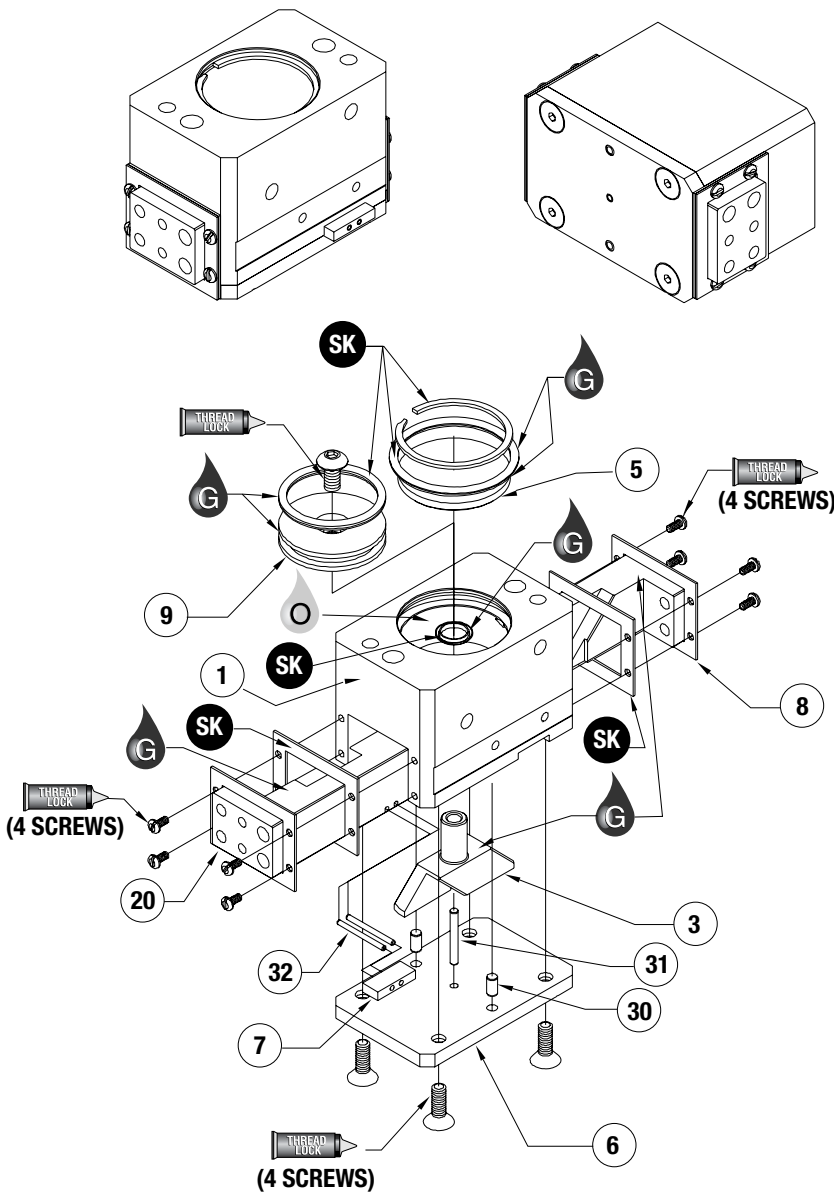
01	1	Body
03	1	Shaft/Wedge
05	1	Cap
06	1	Plate, Bottom
07	1	Target
08	2	Plate, Seal
09	1	Piston
20	2	Jaw, Target Ready
30	2	Dowel Pin
31	1	Dowel Pin
32	2	Roll Pin

NOTE: Contact the Robohand Sales Department for a complete spare parts list with order numbers and prices.

Assembly Procedure

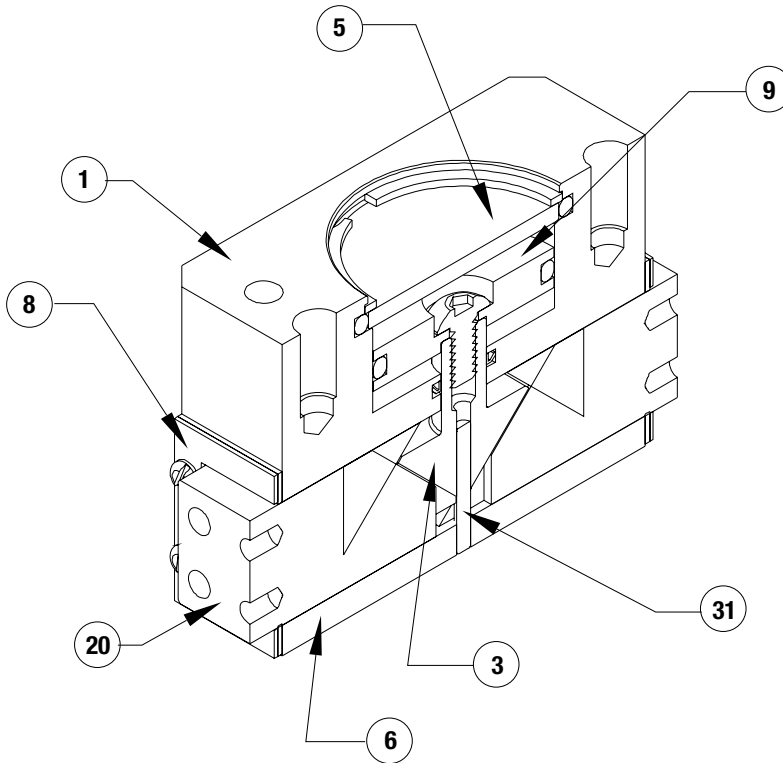
- 1) Lubricate and install seals.
- 2) Install target on one jaw.
- 3) Place wedge, shaft and jaws into body.
- 4) Install piston into body.
- 5) Install cap and retaining ring.
- 6) Attach bottom plate to body.

SK Seal Repair Kit Order #'s See Product Data Sheets



RP-11, 12, 15, 17, 18, 19 SERIES

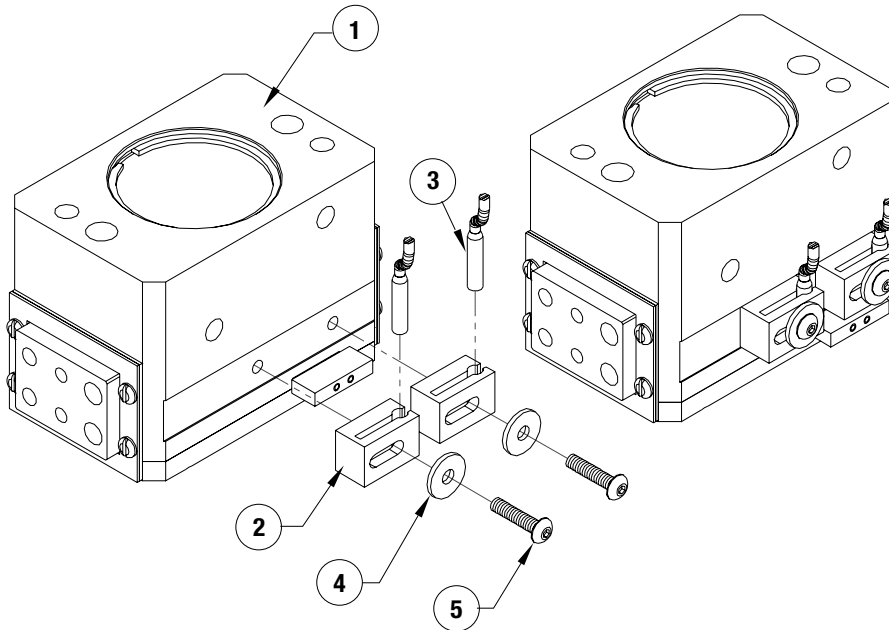
Parallel Grippers | Maintenance and Assembly Procedure



Item	Qty	Name
01	1	Body
03	1	Shaft/Wedge
05	1	Cap
06	1	Plate, Bottom
07	1	Target
08	2	Plate, Seal
09	1	Piston
20	2	Jaw, Target Ready
30	2	Dowel Pin
31	1	Dowel Pin
32	2	Roll Pin

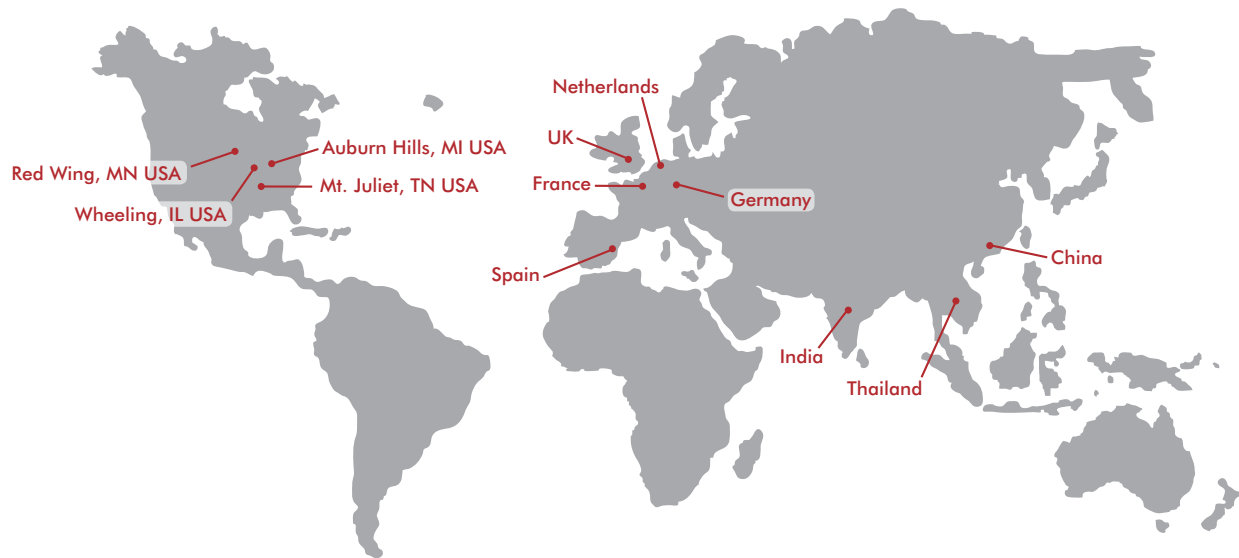
NOTE: Contact the Robohand Sales Department for a complete spare parts list with order numbers and prices.

Accessory Installation & Adjustment Instructions



Installation

- 1) Install sensors as shown.
- 2) Adjust for desired end of stroke detection.



GLOBAL LOCATIONS

NORTH AMERICA

Corporate Headquarters

Auburn Hills, Michigan
Toll Free: 1.888.DESTACO
Marketing: marketing@destaco.com

Global Technology Center

Auburn Hills, Michigan
Tel: 1.248.836.6700
Customer Service: customerservice@destaco.com

Mt. Juliet, Tennessee
Tel: 1.888.DESTACO
Customer Service: customerservice@destaco.com

Wheeling, Illinois
Tel: 1.800.645.5207
Customer Service: camco@destaco.com

Red Wing, Minnesota (Central Research Laboratories)
Tel: 651.385.2142
Customer Service: sales@centres.com

ASIA

Bangkok, Thailand
Tel: +66-2-326-0812
Customer Service: info@destaco.com

Shanghai, China
Tel: +86-21-6081-2888
Customer Service: china@destaco.com

Bangalore, India
Tel: +91-80-41123421-426
Customer Service: india@destaco.com

EUROPE

Oberursel, Germany
Tel: +49-6171-705-0
Customer Service: europe@destaco.com

Sainte Florine, France
Tel: +33-4-73545001
Customer Service: france@destaco.com

Wolverhampton, United Kingdom
Tel: +44-1902-797980
Customer Service: uk@destaco.com

Sant Boi de Llobregat, Spain
Tel: +34-936361680
Customer Service: spain@destaco.com

Uithoorn, Netherlands
Tel: +31-297285332
Customer Service: benelux@destaco.com