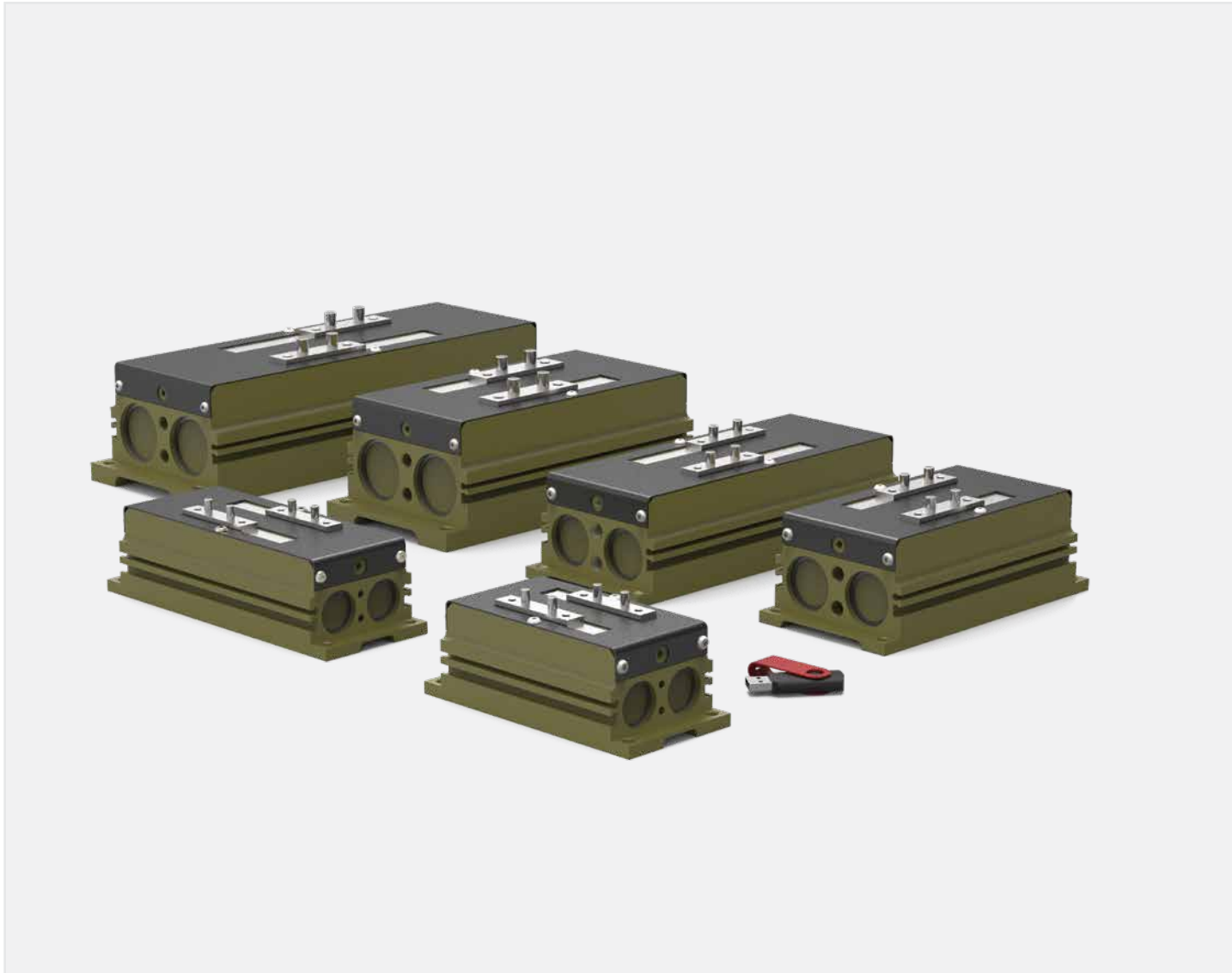


Service Manual

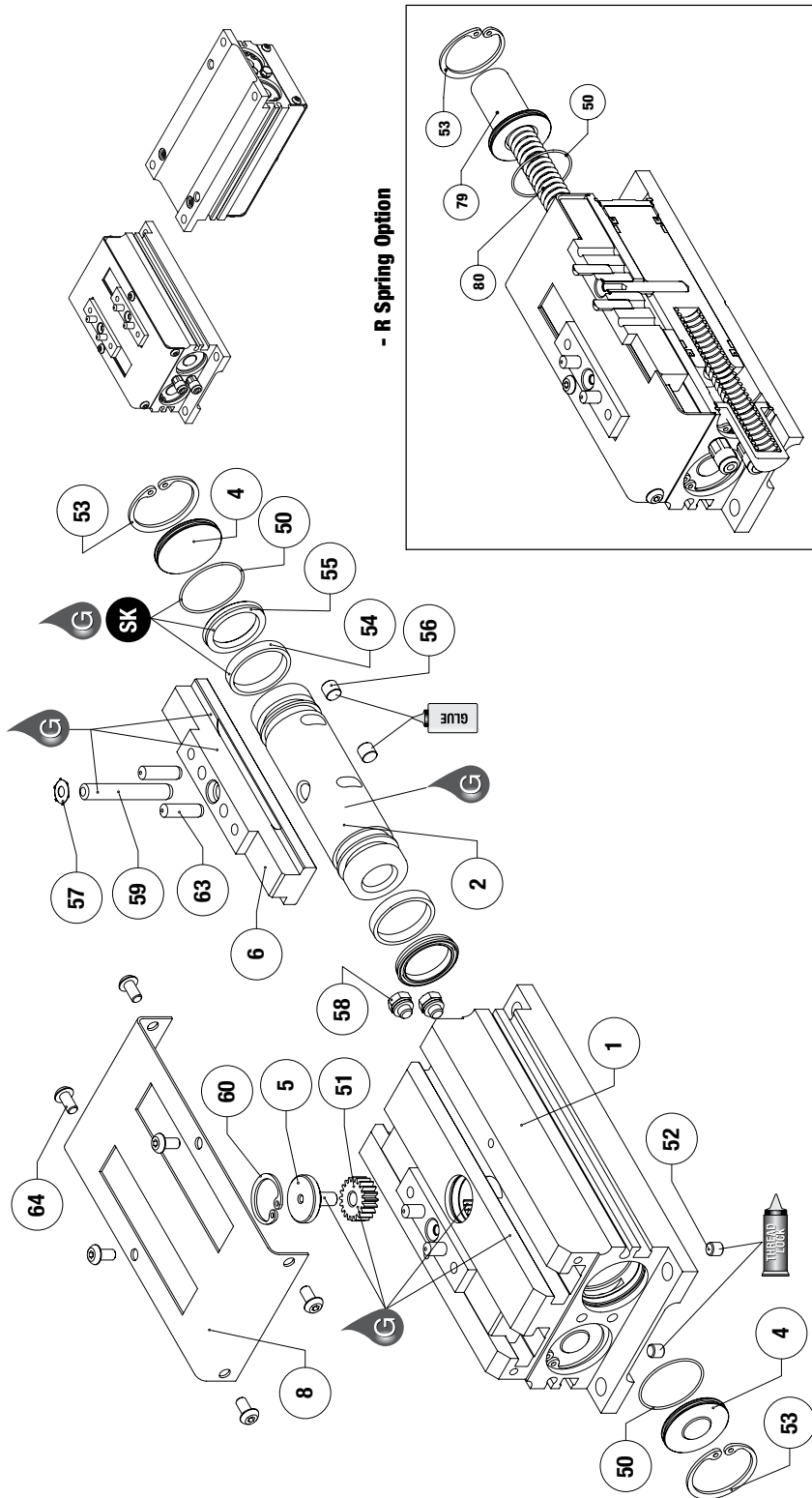
ROBOHAND | DPL Series



WARNING: This is a controlled document. It is your responsibility to deliver this information to the end user of the Destaco Robohand product. Failure to deliver this could result in your liability for injury to the user or damage to the machine. For copies of this manual, call your Customer Service Representative at 1.248.836.6700

DPL SERIES

Parallel Grippers | Maintenance and Assembly Procedure



Item	Qty	Name
01	1	Body
02	2	Piston
04	4	Cap
05	1	Gear Cover
06	2	Jaw
08	1	Shielded Case
50	4	Seal, Cap
51	1	Synchronization Pinion
52	2	Set Screw-Manifold Port Plugs
53	4	Retainer Ring, Cap
54	4	Piston Ring Guidance
55	4	Piston U-Cup
56	4	Magnet
57	2	Drive Pin Retainer Ring
58	2	Manifold Port Plugs
59	2	Drive Pin
60	2	Center Retaining Ring
63	4	Jaw Dowel Pin
64	6	Shielded Case Screws
79	2	Spring Cap
80	2	Spring

NOTE: Contact the Robohand Sales Department for a complete spare parts list with order numbers and prices.

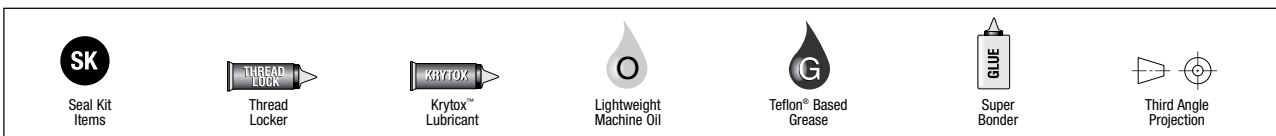
Assembly Procedure

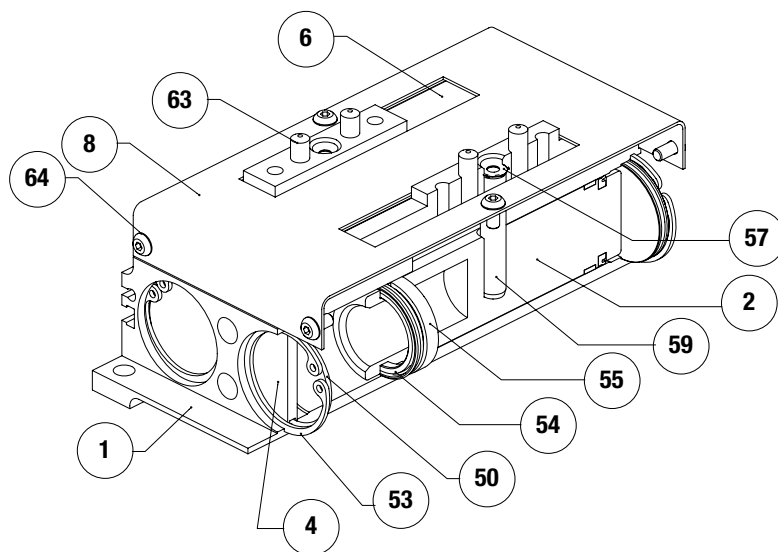
- 1) Glue magnets #56 into the piston slots #2.
- 2) If top air ports are not used, plug the body #1 with screws #52 using glue.
- 3) Lubricate and install the U-Cup seals #55 and the guidance ring #54 onto the piston #2.
- 4) Lubricate and assemble the piston #2 into the body #1 using the adequate tooling
- 5) Press dowel pins #63 into the jaws #6.
- 6) Lubricate and install the jaws #6 into the slots #1.
- 7) Press the drive pin #59 and the retaining ring #57 through the jaws #6 and the piston #2.
- 8) Lubricate and install the axis #5, the pinion #51, the retaining ring #60 into the body. Beware of the correctly place the jaws to get a synchronous motion.
- 9) Lubricate and install the seal #50 onto the cap #4.
- 10) Install the cap #4 and the retaining ring #53 into the cap #1.
- 11) Install the shielded case #8.
- 12) Screw the plugs #58 into the body #1.

Assembly - Spring option

- 1) Lubricate and install the seal (#50) onto the cap.
- 2) Install the spring into the piston bore and into the cap bore.
- 3) Compress the spring till the cap reach its correct position on the body.
- 4) Install the retaining ring.

**SK Seal Repair Kit Order #'s
See Product Data Sheets**

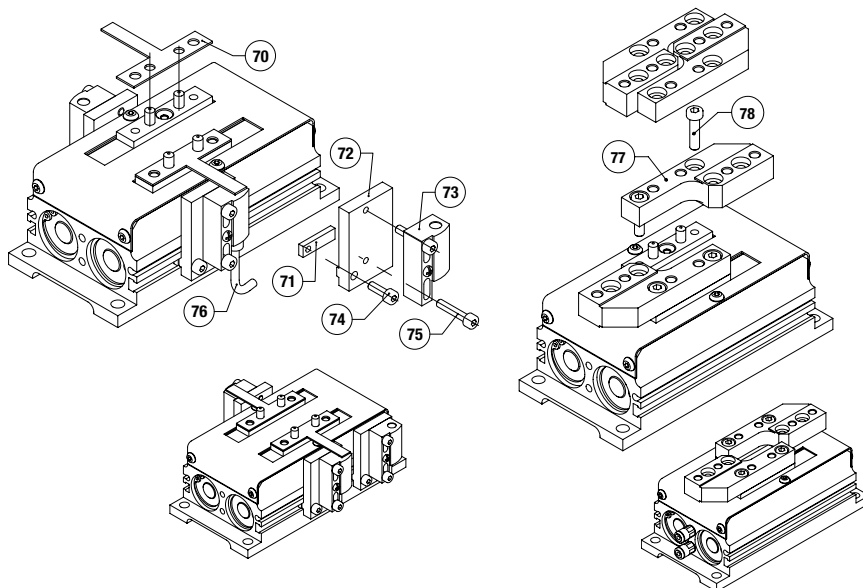




Item	Qty	Name
01	1	Body
02	2	Piston
04	4	Cap
05	1	Axis
06	2	Jaw
08	1	Shielded Case
50	4	Seal, Cap
51	1	Synchronization Pinion
52	2	Set Screw-Manifold Port Plugs
53	4	Retainer Ring, Cap
54	4	Piston Ring Guidance
55	4	Piston U-Cup
56	4	Magnet
57	2	Drive Pin Retainer Ring
58	2	Stopper-Manifold Port Plugs
59	2	Drive Pin
60	2	Center Retaining Ring
63	4	Jaw Dowel Pin
64	6	Shielded Case Screws

NOTE: Contact the Robohand Sales Department for a complete spare parts list with order numbers and prices.

Accessory Installation & Adjustment Instructions



Installation - Inductive Sensors Holder Kit

- 1) Place the flags (#2) on the jaws as shown.
- 2) Install the sensor holder (#72) on the adapter (#73) using the screws (#75)
- 3) Tighten the sensor (not shown) into the sensor holder(#73).
- 4) Install the nut (#71) into the slot of the body and the adapter (#72) on the slot. Install the screw (#74) to fix the adapter on the nut.
- 5) Loosen the screw (#74) and slide the assembly until the light indicates.
- 6) Tighten the screw (#74).

Installation - In-Line Jaws

- 1) Install the interface (#77) onto the jaws. When combined with the **-R** option and according to the mounting direction, the interface can be used for internal or external clamping.
- 2) Tighten the screw (#78) between the interface (#77) and the jaw.



GLOBAL LOCATIONS

NORTH AMERICA

Corporate Headquarters

Auburn Hills, Michigan
Toll Free: 1.888.DESTACO
Marketing: marketing@destaco.com

Global Technology Center

Auburn Hills, Michigan
Tel: 1.248.836.6700
Customer Service: customerservice@destaco.com

Mt. Juliet, Tennessee
Tel: 1.888.DESTACO
Customer Service: customerservice@destaco.com

Wheeling, Illinois
Tel: 1.800.645.5207
Customer Service: camco@destaco.com

Red Wing, Minnesota (Central Research Laboratories)
Tel: 651.385.2142
Customer Service: sales@centres.com

ASIA

Bangkok, Thailand
Tel: +66-2-326-0812
Customer Service: info@destaco.com

Shanghai, China
Tel: +86-21-6081-2888
Customer Service: china@destaco.com

Bangalore, India
Tel: +91-80-41123421-426
Customer Service: india@destaco.com

EUROPE

Oberursel, Germany
Tel: +49-6171-705-0
Customer Service: europe@destaco.com

Sainte Florine, France
Tel: +33-4-73545001
Customer Service: france@destaco.com

Wolverhampton, United Kingdom
Tel: +44-1902-797980
Customer Service: uk@destaco.com

Sant Boi de Llobregat, Spain
Tel: +34-936361680
Customer Service: spain@destaco.com

Uithoorn, Netherlands
Tel: +31-297285332
Customer Service: benelux@destaco.com