

## Service Manual

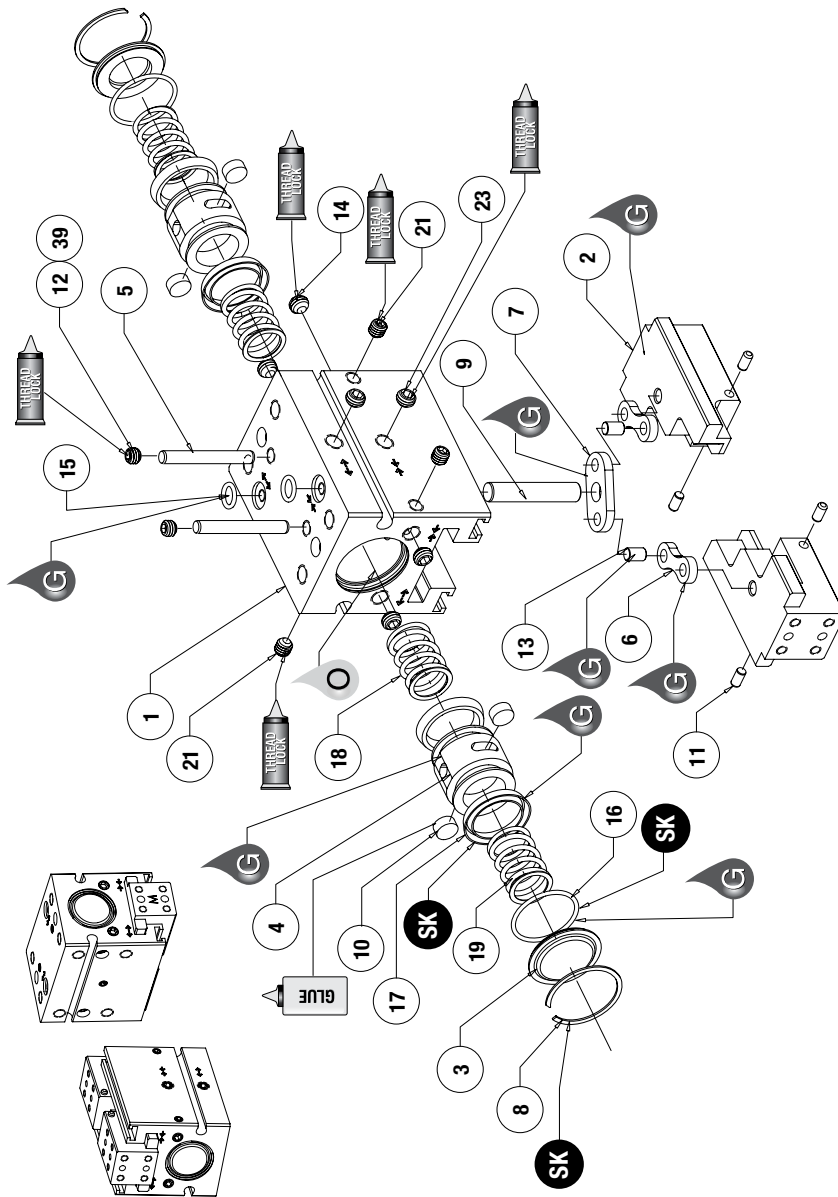
### **ROBOHAND** | DPG Series



**WARNING:** This is a controlled document. It is your responsibility to deliver this information to the end user of the Destaco Robohand product. Failure to deliver this could result in your liability for injury to the user or damage to the machine. For copies of this manual, call your Customer Service Representative at 1.248.836.6700

# DPG SERIES

## Parallel Grippers | Maintenance and Assembly Procedure



Item	Qty	Name
01	1	Body
02	2	Jaw
03	2	Cap
04	2	Piston
05	2	Drive Pin
06	2	Synchronizing Bar
07	1	Equalizer
08	2	Retaining Ring
09	1	Pivot Pin
10	4	Magnet
11	4	Targets for Inductive Sensors
12	2	Set Screw - Drive Pin Access Plug
13	2	Equalizer/Synchronizing Bar pivot pin
14	4	Set Screw - End Port Plugs
15	2	O-ring - Top Porting Manifold Seals (-T option)
16	2	O-ring - Cap Seals
17	4	U-cup - Piston Seals
18	2	"Springs for "-0" Spring-Open Option"
19	2	"Springs for "-C" Spring-Closed Option"
21	3	Set Screw - Internal Porting Plugs
23	2	Set Screw - Side Porting Plugs (-T option)
39	1	Set Screw - Plug (-LF and -RF options only)

**NOTE:** Contact the Robohand Sales Department for a complete spare parts list with order numbers and prices.

**SK Seal Repair Kit Order #'s See Product Data Sheets**

### Assembly Procedure

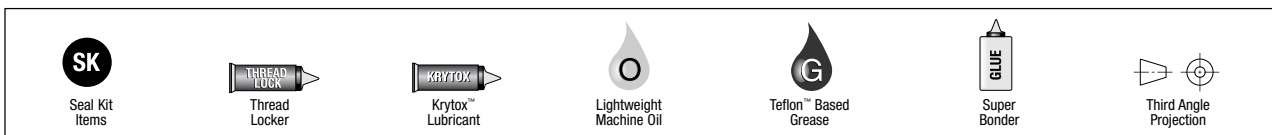
- 1) Lubricate body.
- 2) Plug cross ports in body.
- 3) Press pivot pin into body.
- 4) Insert magnets into pistons making sure magnets attract to each other.
- 5) Lubricate and install seals onto pistons.
- 6) Insert pistons into body aligning drive pin hole in pistons with the drive pin hole in the body.
- 7) Press pins into equalizer.
- 8) Assemble equalizer with synchronizing bars and place onto pivot pin in body

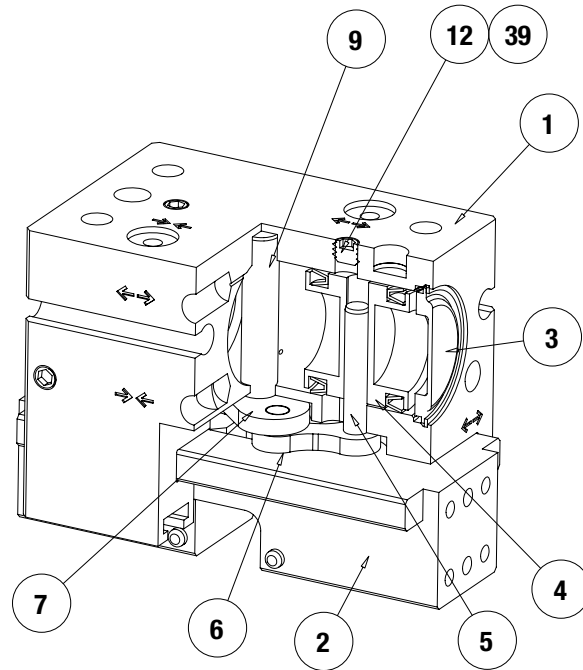
making sure holes in synchronizing bars line up with holes in pistons.

- 9) From top body mounting surface insert drive pins through the pistons and into the synchronizing bars making sure not to go through the synchronizing bars.
- 10) Place jaws into body aligning the drive pins with the hole in the jaws.
- 11) Press drive pins into jaws.
- 12) Install drive pin plugs into body.
- 13) Place seals onto caps and install with retaining rings.

### Non-Synchronous Procedure

- 1) Remove drive pin plugs.
- 2) Press drive pins out of body from jaw side.
- 3) Remove jaws from body.
- 4) Remove equalizer and synchronizing bars from body.
- 5) Re-install jaws into body aligning the drive pin with the hole in the jaws
- 6) Press drive pins into jaws.
- 7) Re-install drive pin plugs into body.





Item	Qty	Name
01	1	Body
02	2	Jaw
03	2	Cap
04	2	Piston
05	2	Drive Pin
06	2	Synchronizing Bar
07	1	Equalizer
09	1	Pivot Pin
12	2	Set Screw - Drive Pin Access Plug
39	1	Set Screw - Plug (-LF and -RF options only)

**NOTE:** Contact the Robohand Sales Department for a complete spare parts list with order numbers and prices.

### Accessory Installation & Adjustment Instructions

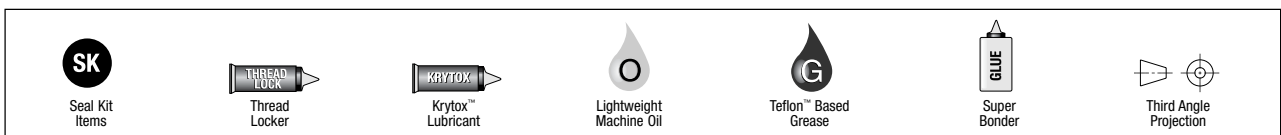
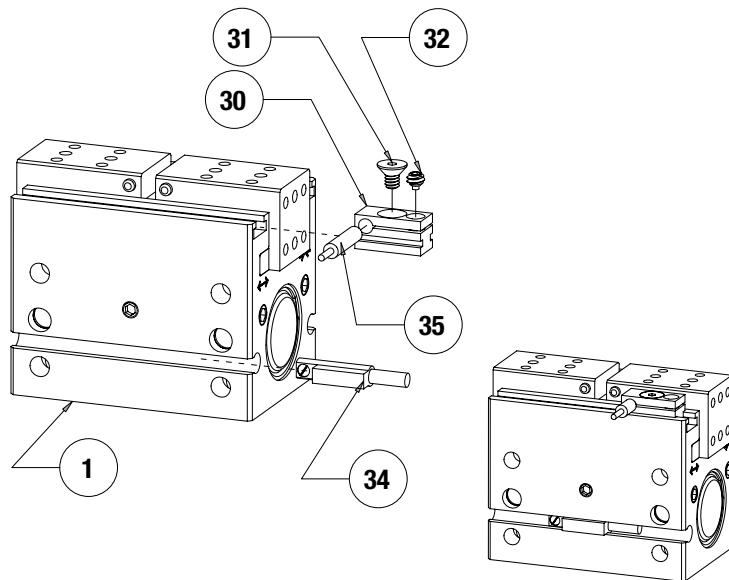
#### Installation

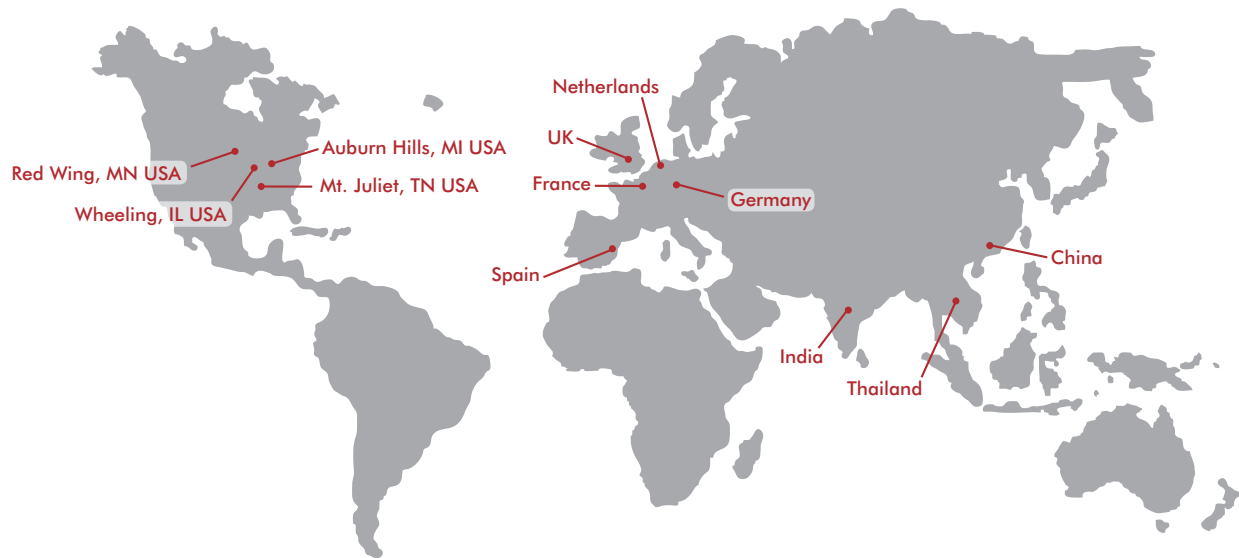
##### Magneto Resistive Sensors

- 1) Install sensors in profile slots of gripper body as shown.
- 2) Set sensors with integrated screw.

##### Inductive Sensors

- 1) Insert sensor bracket into slot of body.
- 2) Insert sensor into bracket and adjust sensor depth so that sensor light indicates on target.
- 3) Tighten sensor locking screw (#31) to hold sensor depth.
- 4) Position sensor bracket for desired stroke detection.
- 5) Tighten sensor bracket with setscrew (#32) to lock stroke detection position.





## GLOBAL LOCATIONS

### NORTH AMERICA

#### Corporate Headquarters

Auburn Hills, Michigan  
Toll Free: 1.888.DESTACO  
Marketing: [marketing@destaco.com](mailto:marketing@destaco.com)

#### Global Technology Center

Auburn Hills, Michigan  
Tel: 1.248.836.6700  
Customer Service: [customerservice@destaco.com](mailto:customerservice@destaco.com)

Mt. Juliet, Tennessee  
Tel: 1.888.DESTACO  
Customer Service: [customerservice@destaco.com](mailto:customerservice@destaco.com)

Wheeling, Illinois  
Tel: 1.800.645.5207  
Customer Service: [camco@destaco.com](mailto:camco@destaco.com)

Red Wing, Minnesota (Central Research Laboratories)  
Tel: 651.385.2142  
Customer Service: [sales@centres.com](mailto:sales@centres.com)

### ASIA

Bangkok, Thailand  
Tel: +66-2-326-0812  
Customer Service: [info@destaco.com](mailto:info@destaco.com)

Shanghai, China  
Tel: +86-21-6081-2888  
Customer Service: [china@destaco.com](mailto:china@destaco.com)

Bangalore, India  
Tel: +91-80-41123421-426  
Customer Service: [india@destaco.com](mailto:india@destaco.com)

### EUROPE

Oberursel, Germany  
Tel: +49-6171-705-0  
Customer Service: [europe@destaco.com](mailto:europe@destaco.com)

Sainte Florine, France  
Tel: +33-4-73545001  
Customer Service: [france@destaco.com](mailto:france@destaco.com)

Wolverhampton, United Kingdom  
Tel: +44-1902-797980  
Customer Service: [uk@destaco.com](mailto:uk@destaco.com)

Sant Boi de Llobregat, Spain  
Tel: +34-936361680  
Customer Service: [spain@destaco.com](mailto:spain@destaco.com)

Uithoorn, Netherlands  
Tel: +31-297285332  
Customer Service: [benelux@destaco.com](mailto:benelux@destaco.com)