

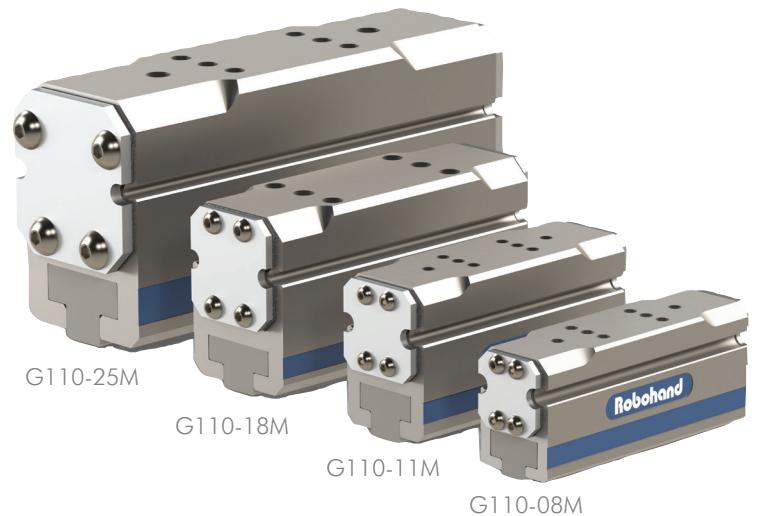
G110 Series

OEM Machine Builder Products

DESTACO's Robohand G110 pneumatic grippers offer affordable gripper solutions that match the price and performance expectations for machine builders and OEM markets.

The G110 series family of grippers include 20 model sizes with varying stroke options. An extended jaw option is offered that is finger compatible with competing products for easier upgrades.

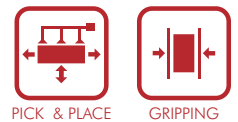
Engineered to provide better performance, lower maintenance and faster operation, the Robohand OEM solutions deliver high on value for cost sensitive applications.



Robohand

Product Highlights/Options

- 20 models of grippers
- Bore sizes: 8, 11, 18, 25mm
- Strokes from 5mm to 50mm
- Drop-in replacement



Features, Markets and Applications

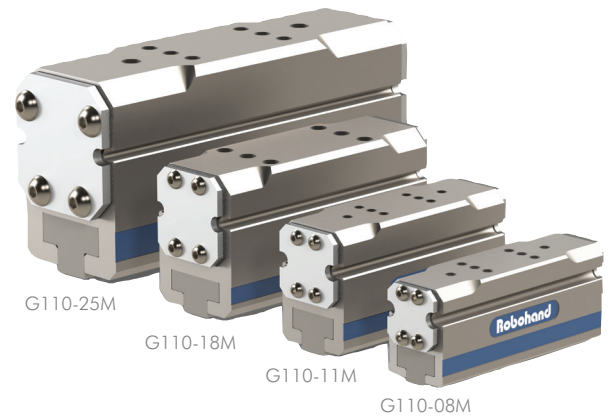
<p>INTERCHANGEABILITY</p>	<ul style="list-style-type: none"> • Designed for OEM machine builders • Existing OEM designed gripper fingers are interchangeable from competing units 	<p>INDUSTRIAL</p>	<p>ASSEMBLY</p>
<p>PERFORMANCE</p>	<ul style="list-style-type: none"> • Very smooth gripping and linear operations • High grip force and slide payload capacity • Precision placement for pick and place applications 	<p>FOOD & PACKAGING</p>	<p>FIXTURE/TESTING</p>
<p>LOW/NO MAINTENANCE</p>	<ul style="list-style-type: none"> • Tested for millions of cycles • Easy installation with quick start kits • Easy field adjustments for fine tuning 	<p>CONSUMER GOODS</p>	<p>MOLDING</p>
		<p>LIFE SCIENCES</p>	<p>CLEAN ROOM</p>

G110 Series OEM Machine Builder Products

G110 Series

OEM Pneumatic Parallel Grippers

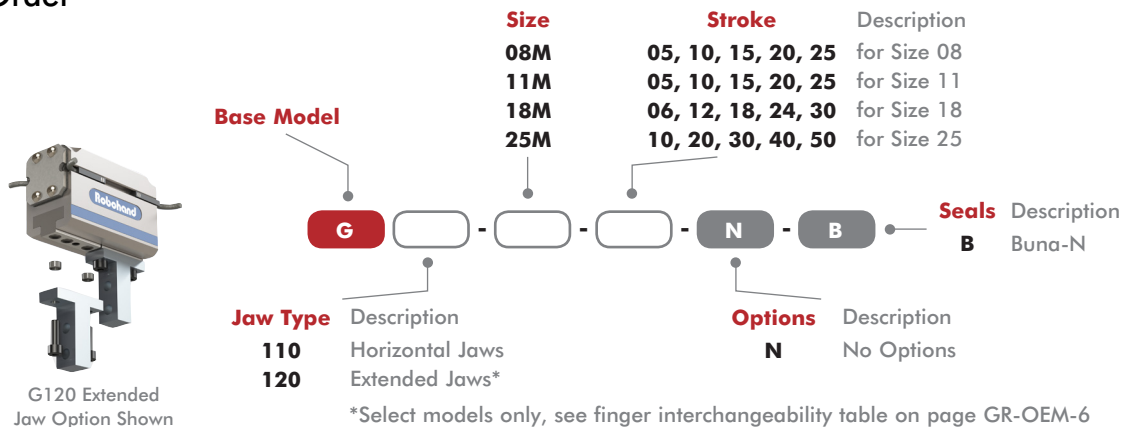
- 20 different models sized to match your application needs
- Fast actuations from 60ms
- Multiple stroke options from 5mm to 50mm
- High grip force, small package from 56N to 558N [13 to 125 lbf]
- Shielded design for clean to moderate manufacturing environments
- Interchangeable gripper fingers with competitive units using extended jaw option
- Locating sleeves for precise finger mounting included with gripper



Specifications	Units	All Sizes
Pressure Range	bar [psi]	3-7 [40-100]
Temperature Range (Buna-N Seals)	°C [°F]	-35°~80° [-30°~180°]
Accuracy	mm [in]	±.05 [0.002]
Repeatability	mm [in]	±.05 [0.002]
Valve Required to Actuate		4 way 2 position

Size	Total Rated Grip Force	Stroke Availability											
		5mm	6mm	10mm	12mm	15mm	18mm	20mm	24mm	25mm	30mm	40mm	50mm
08M	56N [13 lbf]	•		•		•		•		•			
11M	104N [23 lbf]	•		•		•		•		•			
18M	260N [58 lbf]		•		•		•		•		•		
25M	558N [125 lbf]			•				•			•	•	•

How To Order



Dimensions and technical information are subject to change without notice.

GERMANY
+49-6171-705-0
europe@destaco.com

UNITED KINGDOM
+44-1902-797980
uk@destaco.com

NETHERLANDS
+31-297285332
benelux@destaco.com

THAILAND
+66-2-326-0812
asia@destaco.com

USA
+1-888-DESTACO
+1-248-836-6700
northamerica@destaco.com

FRANCE
Tel: +33-4-7354-5001
france@destaco.com

SPAIN
+34-936361680
spain@destaco.com

CHINA
+86-21-6081-2888
china@destaco.com

INDIA
+91-80-41123421-426
india@destaco.com