

84N2 SERIES

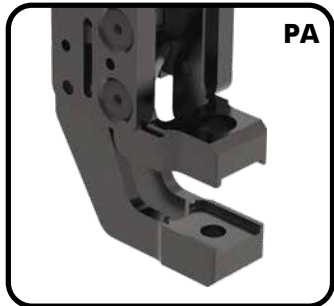
Accelerate® Press Shop Sheet Metal Grippers | Ordering Information



Ports	Description
N	1/8 NPT
G	1/8 BSPP

Opening Angle	Description
030	30° Opening Angle
045	45° Opening Angle
060	60° Opening Angle
075	75° Opening Angle

Jaw Type and Style	Description
FA	Straight Fixed Lower Jaw
PA	90° Jaw Configuration



Specifications:

See page SG-PRG-16 for technical specifications.

Mounting options are ordered separately:

Please refer to mounting options on pages SG-PRG-13 to 14 for mounting style and part number.



In-Jaw Blank Sensing*

- | | |
|----------|------|
| 0 | None |
| P | PNP |
| N | NPN |

*In-jaw blank sensing not available with Single Cone Style Tip.



Sheet Stop

- | | |
|----------|------------|
| 0 | None |
| 1 | Sheet Stop |



Jaw Tip Insert Options

0000 None

- or -

Step 1 - Tip Type Choose One

- 2 C S 3**
- | | |
|----------|------------|
| 1 | Single Tip |
| 2 | Double Tip |



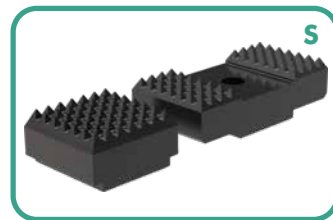
Step 2 - Upper Jaw Tip Insert Choose One (see images below)

- 2 C S 3**

- | | |
|----------|---|
| C | Cone Style (not compatible with In-Jaw Part Sensing option) |
| S | Serrated Style |



Single or Double Cone Tip
(not available for lower jaw)



Single or Double Serrated Tip

Step 3 - Lower Jaw Tip Insert Serrated Only

- 2 C S 3**

- | | |
|----------|---|
| S | Serrated Style Only (Cone-to-Cone option not available) |
|----------|---|

Customer is responsible for final adjustments and tightening of all accessory mounting screws.

Left Sensor Side Mount*

- | | |
|----------|---|
| 0 | None |
| 1 | Dual Magneto-resistive PNP Sensors Left Side |
| 2 | Dual Magneto-resistive NPN Sensors Left Side |
| 3 | Infrared PNP Sensing (not available for PA jaw style) |

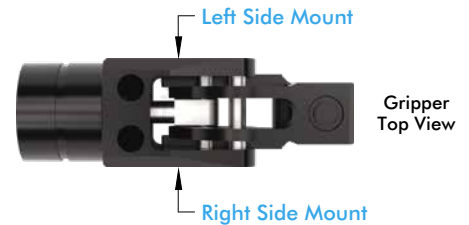
Right Sensor Side Mount*

- | | |
|----------|---|
| 0 | None |
| 1 | Dual Magneto-resistive PNP Sensors Right Side |
| 2 | Dual Magneto-resistive NPN Sensors Right Side |
| 3 | Infrared PNP Sensing (not available for PA jaw style) |

*Use of a Sheet Stop is highly recommended when using 2-Point Sensing.



Side mount sensing detects gripper jaw position and can be adjusted at any point along the jaw travel. The sensors can be adjusted to sense blank, double, full open, and full closed based on jaw position. Use the in-jaw option to verify material between the jaws.



Step 4 - Part Thickness Range Choose One

- 2 C S 3**

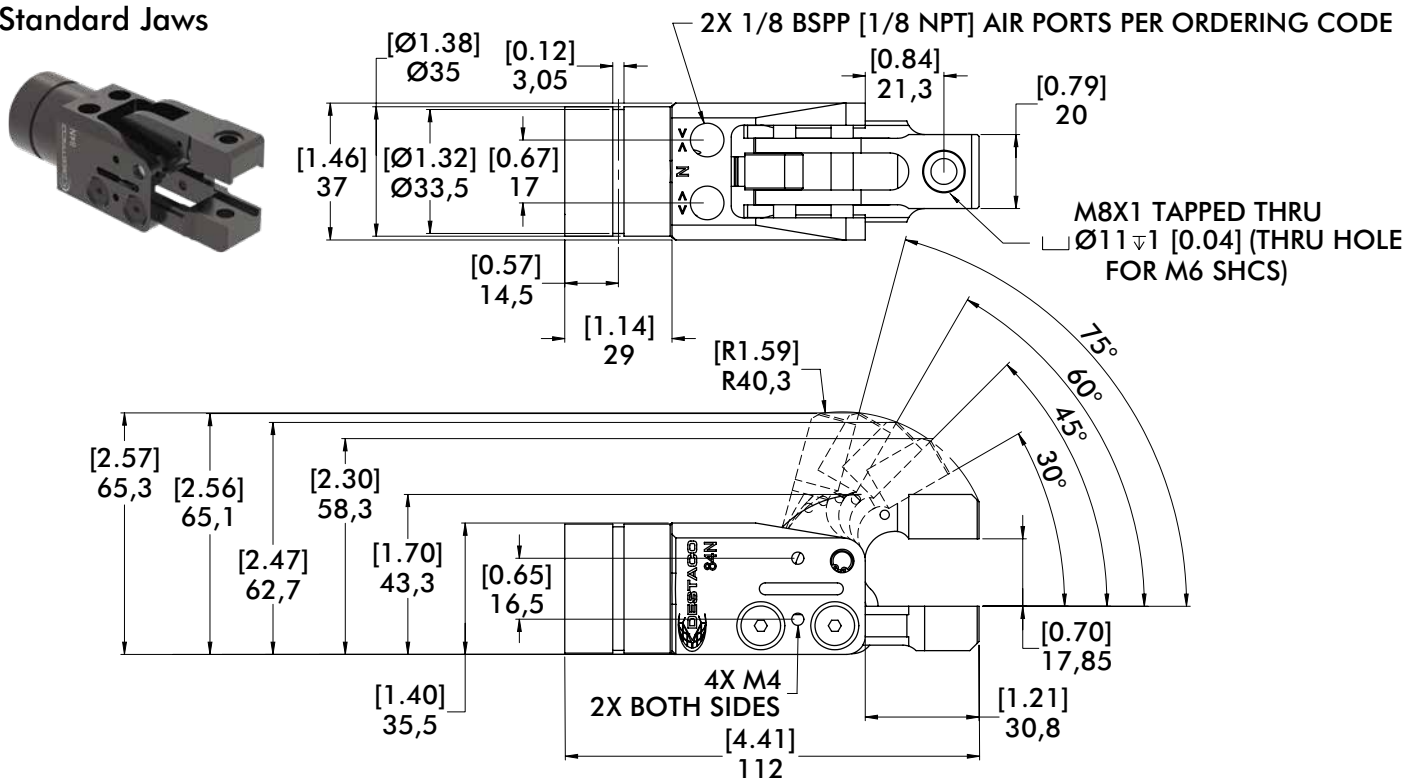
- | | | |
|----------|---------------|---------------|
| 1 | 0.4 to 1.0 mm | Black-Black |
| 2 | 1.0 to 1.6 mm | Silver-Black |
| 3 | 1.6 to 2.2 mm | Silver-Silver |
| 4 | 2.2 to 2.8 mm | Gold-Silver |
| 5 | 2.8 to 3.4 mm | Gold-Gold |



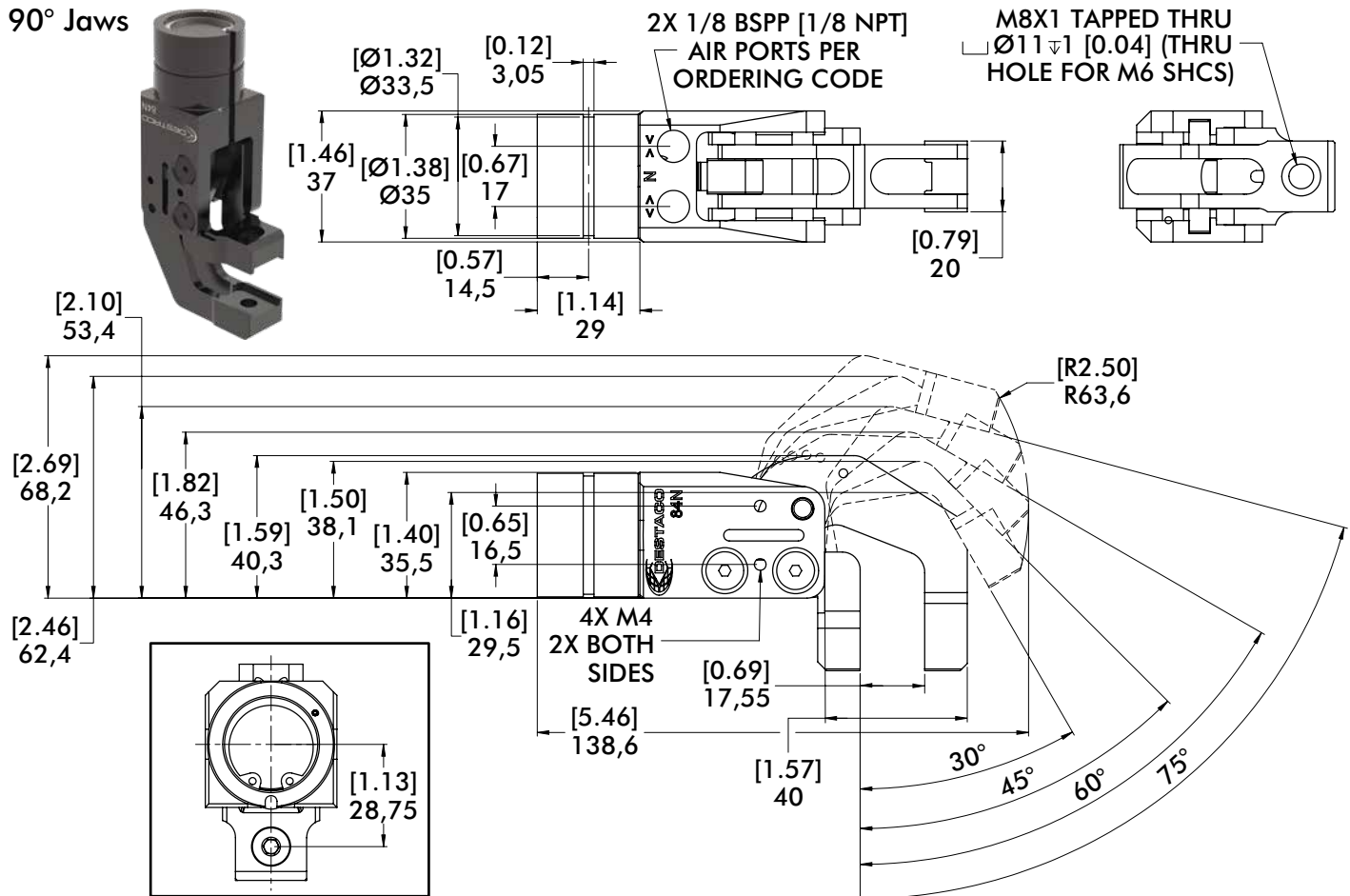
84N2 SERIES

Accelerate® Press Shop Sheet Metal Grippers | Dimensions

Standard Jaws



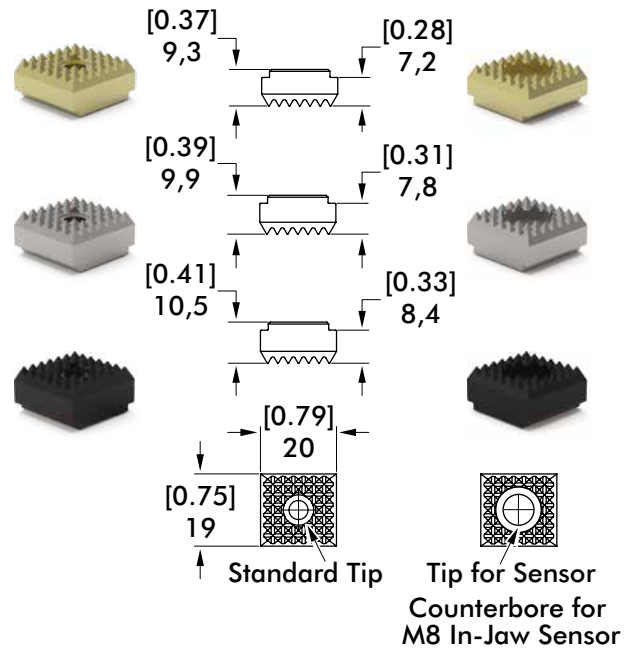
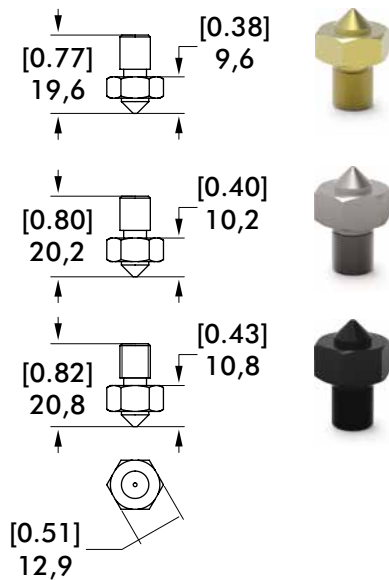
90° Jaws



84N2 TIPS

Accelerate® Press Shop Sheet Metal Grippers | Dimensions and Ordering Information

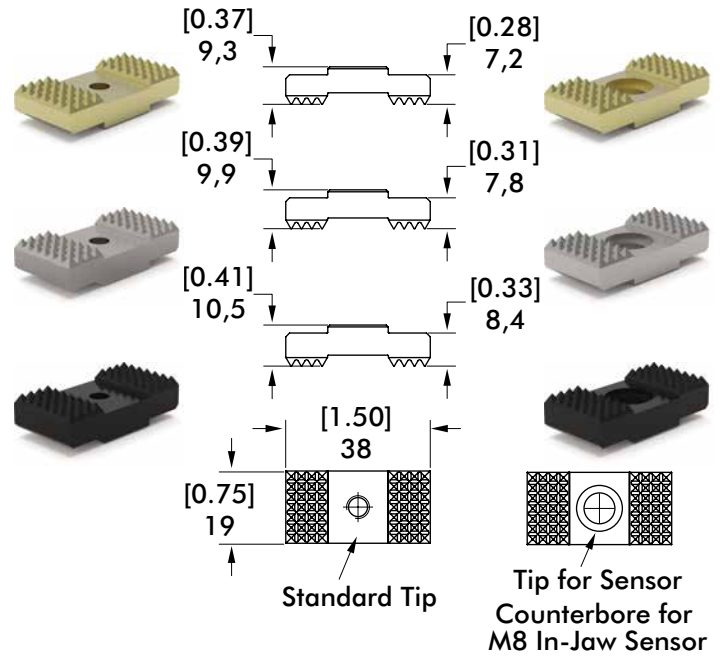
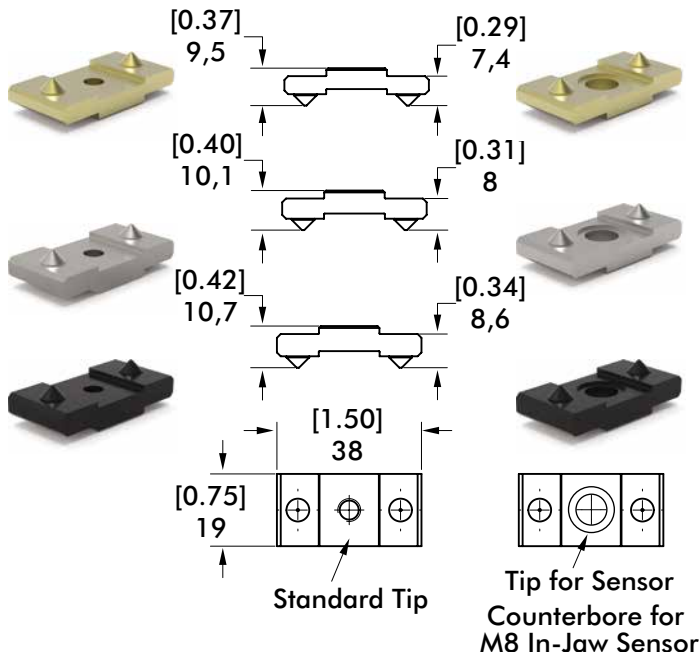
Single Tips



Single Cone	Part #
Gold	8JD-1013-1
Silver	8JD-1012-1
Black	8JD-1011-1

Single Serrated	Standard	for Sensor
Gold	8JD-1019-1	8JD-1028-1
Silver	8JD-1018-1	8JD-1027-1
Black	8JD-1017-1	8JD-1026-1

Double Tips



Double Cone	Standard	for Sensor
Gold	8JD-1016-1	8JD-1025-1
Silver	8JD-1015-1	8JD-1024-1
Black	8JD-1014-1	8JD-1023-1

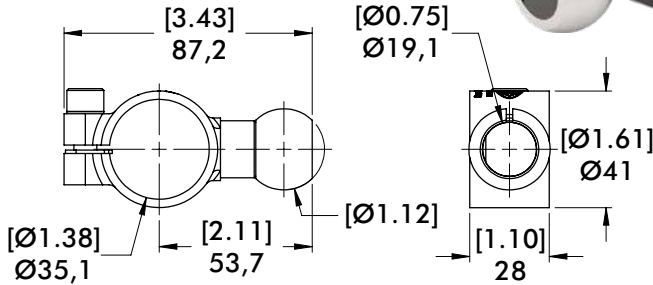
Double Serrated	Standard	for Sensor
Gold	8JD-1022-1	8JD-1036-1
Silver	8JD-1021-1	8JD-1035-1
Black	8JD-1020-1	8JD-1034-1

84N2 MOUNTS

Accelerate® Press Shop Sheet Metal Grippers | Dimensions and Ordering Information

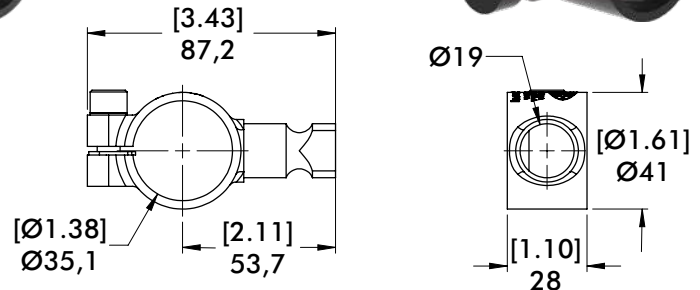
Side Ball and Apple Core Gripper Mounts

Side Ball

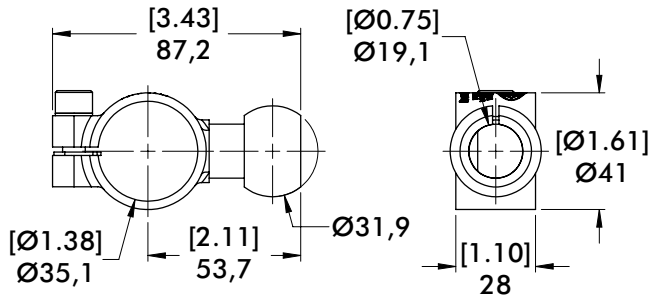


GT-84N1-B112-A

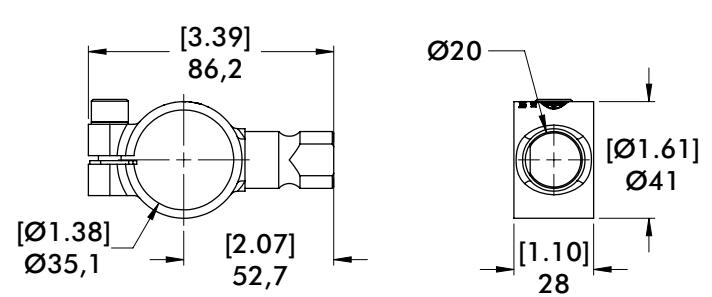
Apple Core



GT-84N1-19M-A

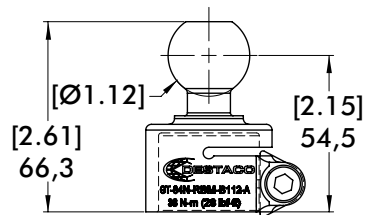


GT-84N1-32B-A

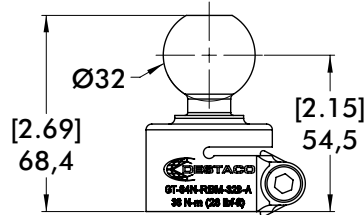


GT-84N1-20M-A

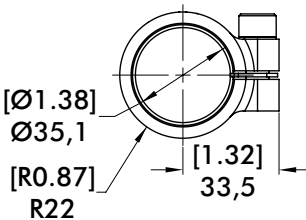
Rear Ball and Flange Gripper Mounts



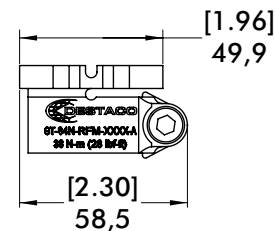
GT-84N-RBM-B112-A



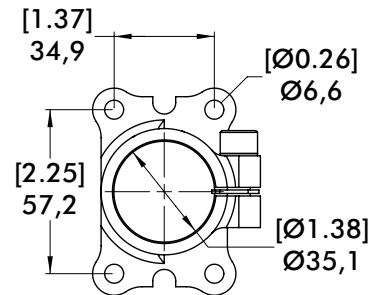
GT-84N-RBM-32B-A



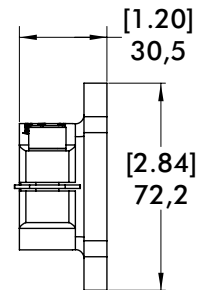
Rear Ball



Rear Flange



GT-84N-RFM-2213-A



Side Ball and Apple Core

- 1.125 in. (28.5mm) Side Ball
- 32mm Side Ball
- 19mm Applecore
- 20mm Applecore

Part Number

- GT-84N1-B112-A**
- GT-84N1-32B-A**
- GT-84N1-19M-A**
- GT-84N1-20M-A**

Rear Ball and Flange

- 1.125 in. (28.5mm) Rear Ball
- 32mm Rear Ball
- Rear Flange

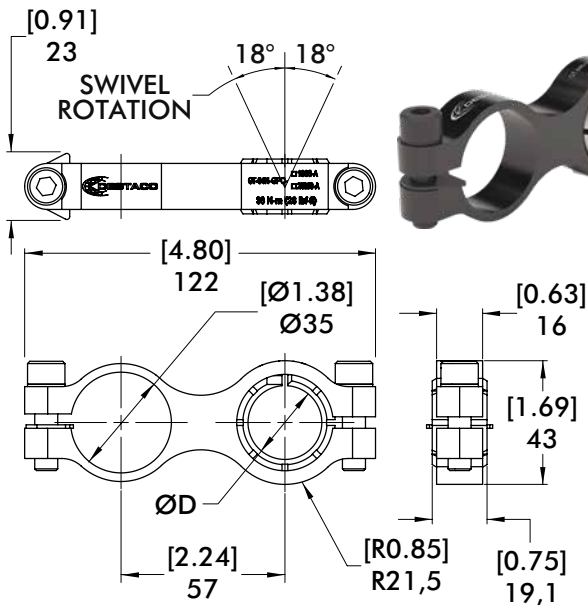
Part Number

- GT-84N-RBM-B112-A**
- GT-84N-RBM-32B-A**
- GT-84N-RFM-2213-A**

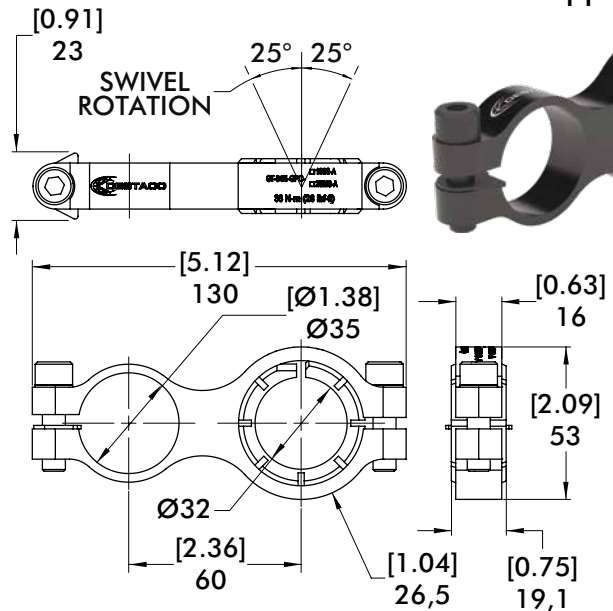
84N2 MOUNTS

Accelerate® Press Shop Sheet Metal Grippers | Dimensions and Ordering Information

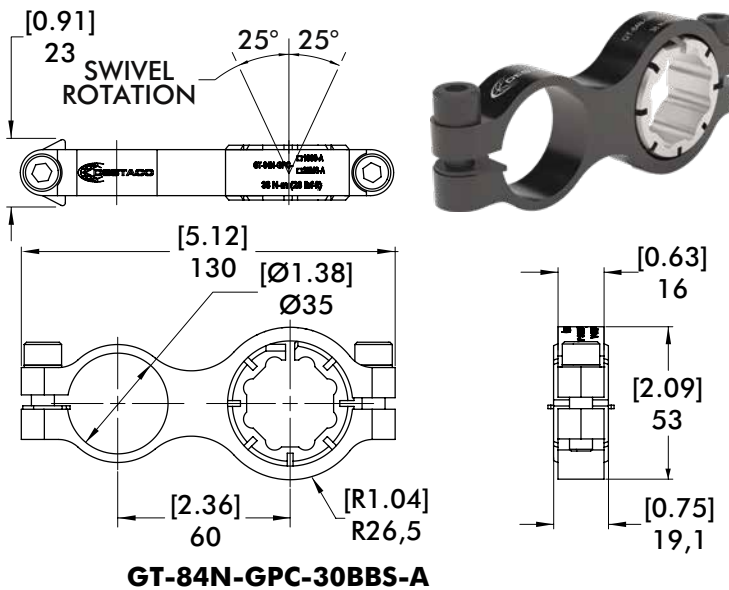
Parallel Swivel Gripper Mount



ØD=1.00 in. **GT-84N-GPC-100S-A**
 ØD=25mm **GT-84N-GPC-25MS-A**



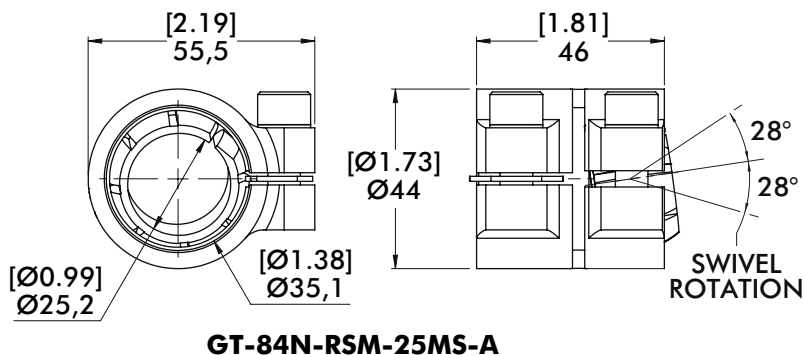
GT-84N-GPC-125S-A



GT-84N-GPC-30BBS-A

Parallel Swivel Mount	Part Number
1" Swivel Mount	GT-84N-GPC-100S-A
1-1/4" Swivel Mount	GT-84N-GPC-125S-A
25mm Swivel Mount	GT-84N-GPC-25MS-A
30mm Body Builder Swivel Mount	GT-84N-GPC-30BBS-A

Rear Clamp Swivel Mount



GT-84N-RSM-25MS-A

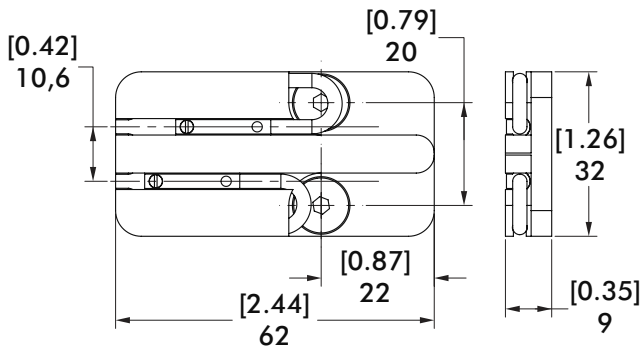


Rear Swivel Mount	Part Number
25mm Swivel Mount	GT-84N-RSM-25MS-A

84N2 SENSING OPTIONS

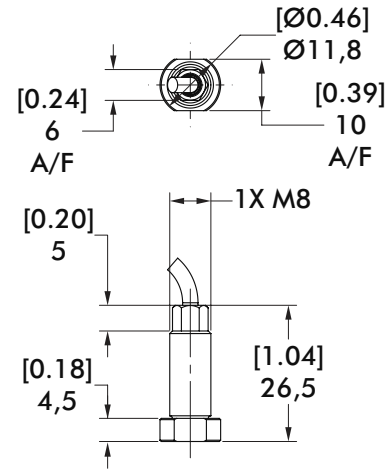
Accelerate® Press Shop Sheet Metal Grippers | Dimensions and Ordering Information

Side Mount Magneto-resistive Sensor



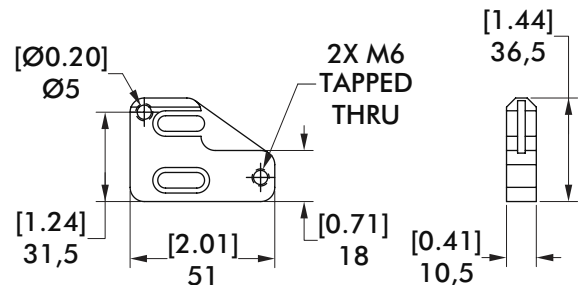
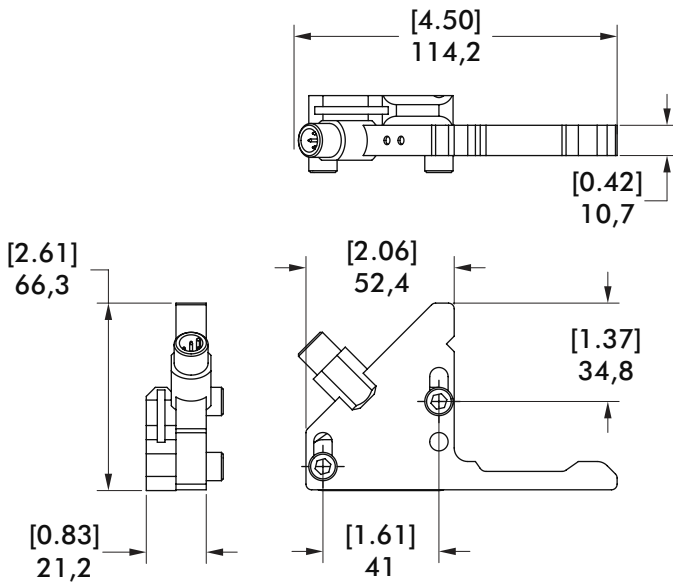
Description	Part Number
PNP Magneto-resistive Sensor Kit	8EA-1035-1
NPN Magneto-resistive Sensor Kit	8EA-1036-1
4mm PNP Magneto-resistive Sensor	OISP-017
4mm NPN Magneto-resistive Sensor	OISN-017

In-Jaw Part Sensor



Description	Part Number
PNP Inductive Sensor	8EA-1033-1
NPN Inductive Sensor	8EA-1034-1

Infrared Part Present Sensor and Mounting Adapter

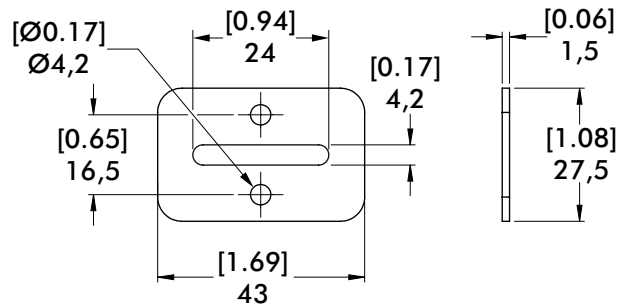


Description	Part Number
Infrared Part Present Sensor Kit	8EA-1023-1

84N2 ACCESSORIES

Accelerate® Press Shop Sheet Metal Grippers | Dimensions and Ordering Information

Sheet Stop Option



Description

Sheet Stop Kit

Includes socket head cap mounting screws

Part Number

8MH-1003-1

Specifications

Specification	Unit	84N2
Grip Force at 5 bar	N [lbs]	Up to 1000 [225]
Weight (FA Option, No Tips)	Kg [lb]	0.27 [0.6]
Size L x W x H (open)	mm [in]	110 x 43 x 64 [4.33] x [1.69] x [2.52]
Actuation Time	ms	33
Minimum Operating Pressure	bar [psi]	3 [44]
Opening Angles		30°, 45°, 60°, 75°
Piston Ø	mm [in]	25 [0.98]
Air Consumption/Cycle	L [in ³]	0,015 [0.92]
Temperature Range	C° [F°]	-35° to 80° [-31° to 176]