

84N1 SERIES

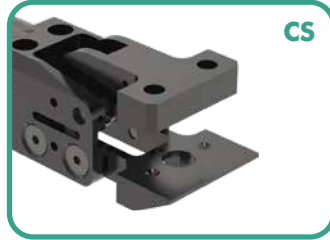
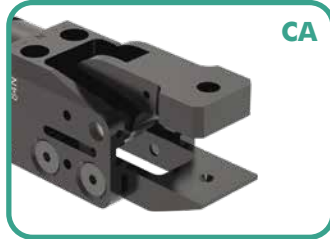
Accelerate® Press Shop Sheet Metal Grippers | Ordering Information



Ports	Description
N	1/8 NPT
G	1/8 BSPP

Opening Angle	Description
030	30° Opening Angle
045	45° Opening Angle
060	60° Opening Angle
075	75° Opening Angle

Jaw Style/ Tip Mount	Description
FA	Fixed Lower 0° Jaw, Single Tip Mount
FC	Fixed Lower 0° Jaw, Double Tip Mount
CA	Fixed Lower Chisel Jaw, Single Tip Mount
CC	Fixed Lower Chisel Jaw, Double Tip Mount
CS	Fixed Lower Chisel Jaw, Double Tip w/Sensor Mount
PC	Fixed Lower 90° Jaw, Double Tip Mount



Specifications:

See page SG-PRG-8 for technical specifications.

Mounting options are ordered separately:

Please refer to mounting options on pages SG-PRG-5 to 6 for mounting style and part number.

84N1 SERIES

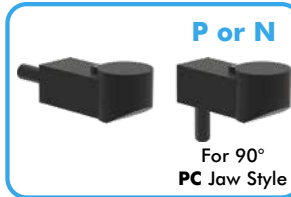
Accelerate® Press Shop Sheet Metal Grippers | Ordering Information

Part Presence Detection

0
P
N

Description

None
PNP
NPN



4mm Sensing Range

Sheet Stops

0
1

Description

None
Included



Left Sensor Side Mount

0
1
2
3

Description

None
Dual Magnetoresistive PNP Sensors Left Side
Dual Magnetoresistive NPN Sensors Left Side
Infrared PNP Sensing (not available for PC jaw style)

Right Sensor Side Mount

0
1
2
3

Description

None
Dual Magnetoresistive PNP Sensors Right Side
Dual Magnetoresistive NPN Sensors Right Side
Infrared PNP Sensing (not available for PC jaw style)



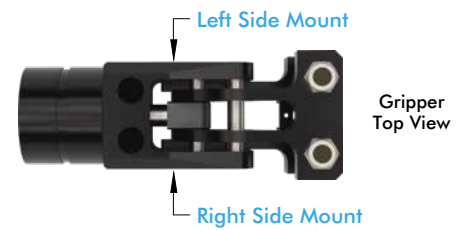
0.4 mm Double blank minimum per sheet thickness



Tips

Description

- 00 None
- 01 Serrated Tip (for all Jaw Styles except FA)
- 02 Serrated Tip (for FA Jaw Style only)
- 03 Point Tip
- 04 Peen Tip
- 05 Polyurethane Tip (Durometer 70A)



Description	Part Number	Single Tip Jaw	Double Tip Jaw
Polyurethane Tip	8JD-1005-1	Yes	Yes
Point Tip	8JD-1001-1	Yes*	Yes
Serrated Tip	8JD-1002-1	Yes*	Yes
Peen Tip	8JD-1003-1	Yes*	Yes
Serrated Notched Top (for Jaw Style FA only)	8JD-1004-1	Yes	No

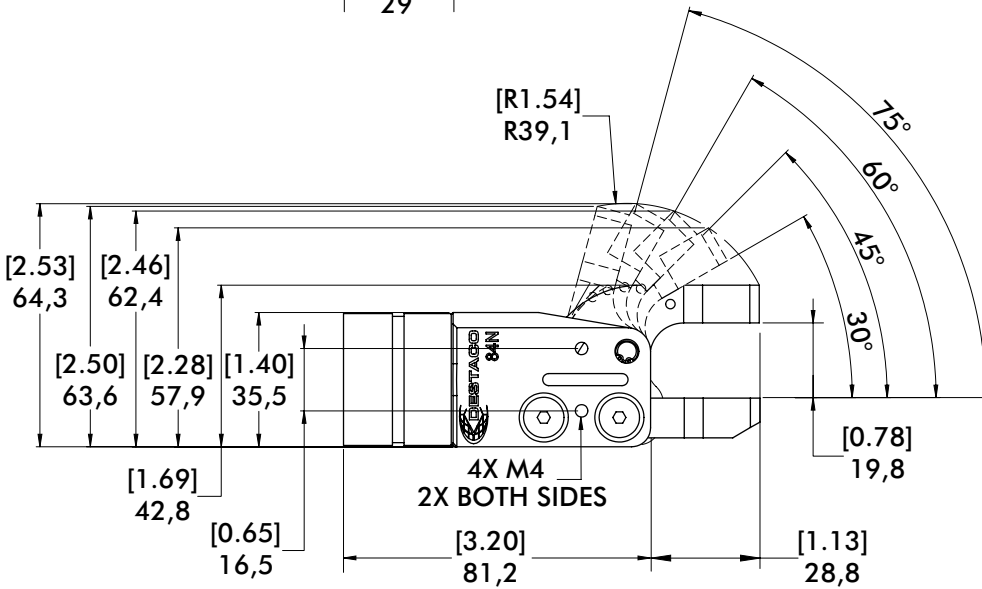
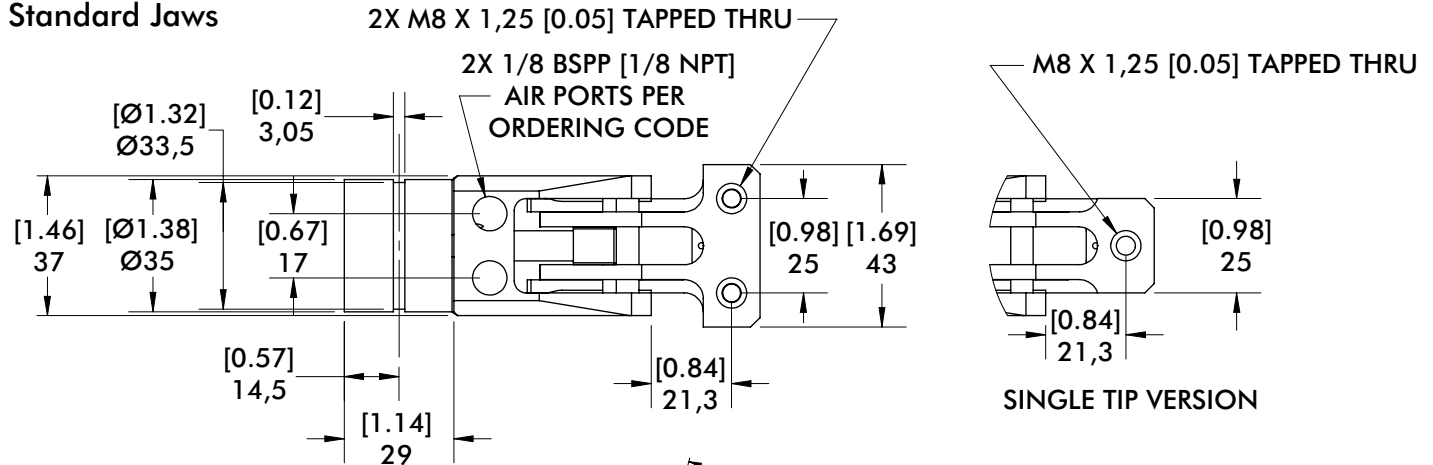
*These options will work on single tip jaws but WILL activate the part present sensor which will result in a false positive if that option is used.

Customer is responsible for final adjustments and tightening of all accessory mounting screws.

84N1 SERIES

Accelerate® Press Shop Sheet Metal Grippers | Dimensions

Standard Jaws

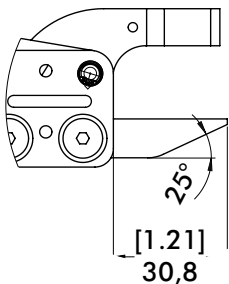


Single Tip

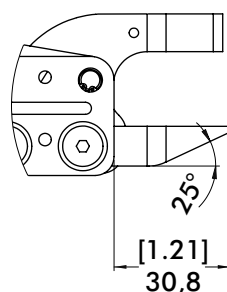


Double Tip

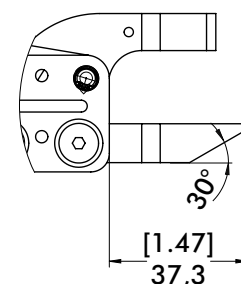
Chisel Jaws



SINGLE TIP VERSION



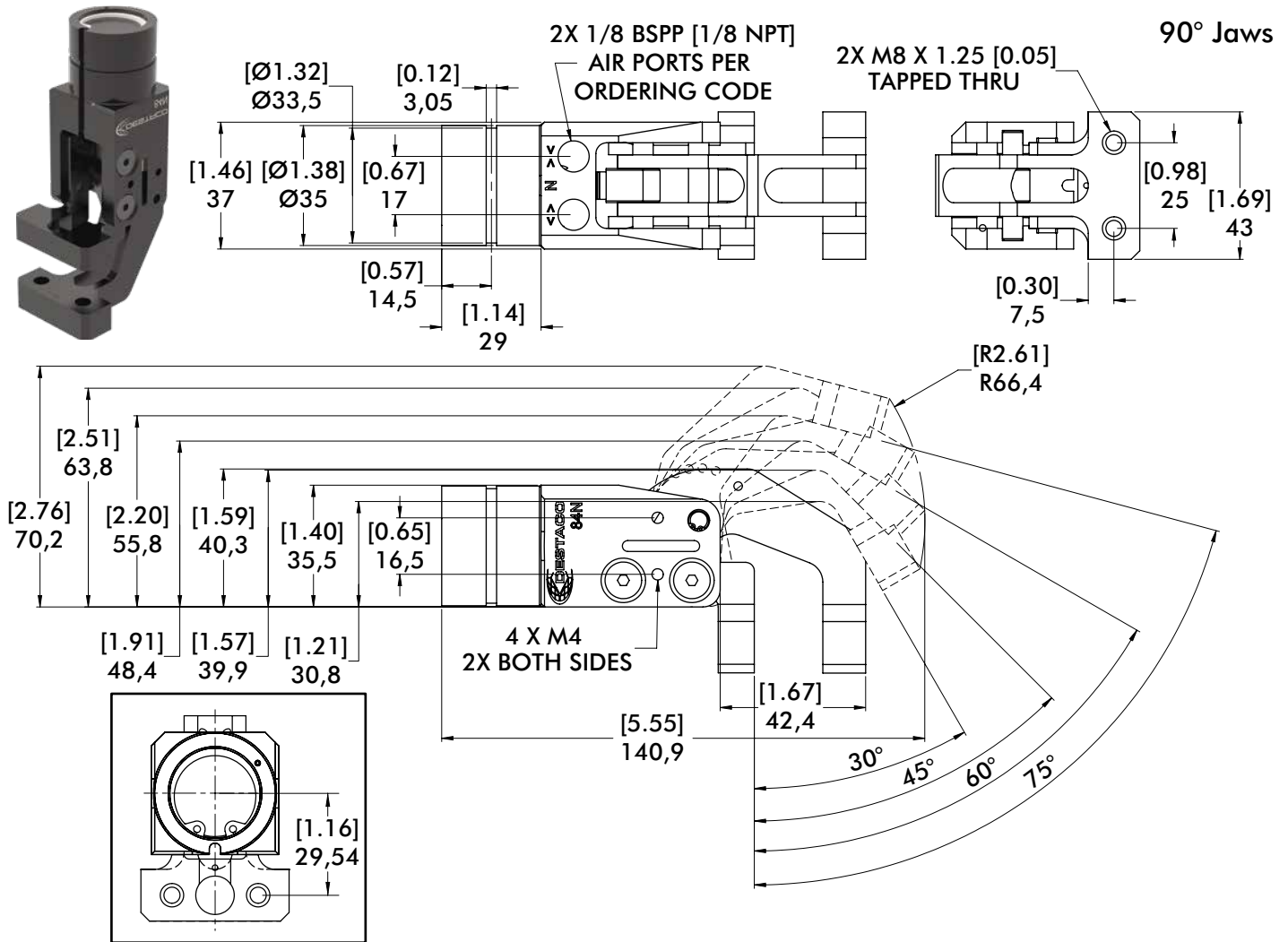
DOUBLE TIP VERSION



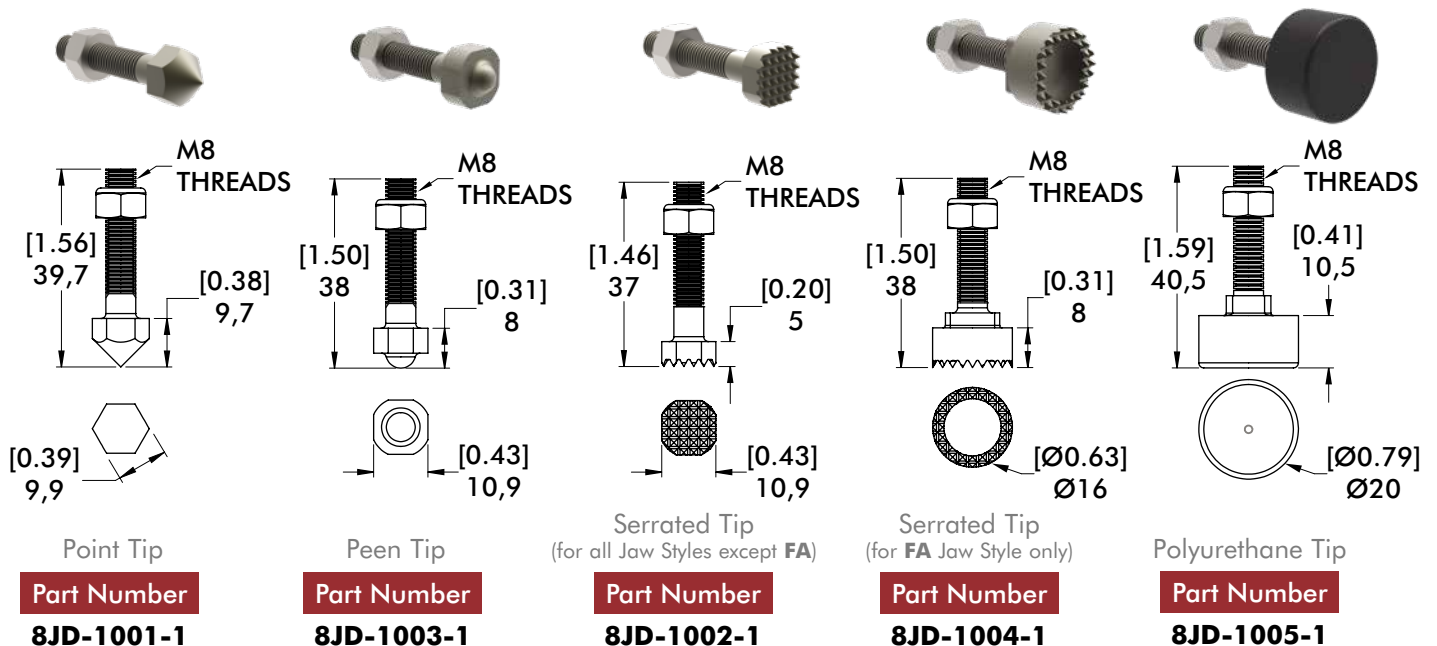
DOUBLE TIP VERSION
 PART PRESENCE SENSOR READY

84N1 SERIES

Accelerate® Press Shop Sheet Metal Grippers | Dimensions and Ordering Information



Jaw Tip Options



84N1 MOUNTS

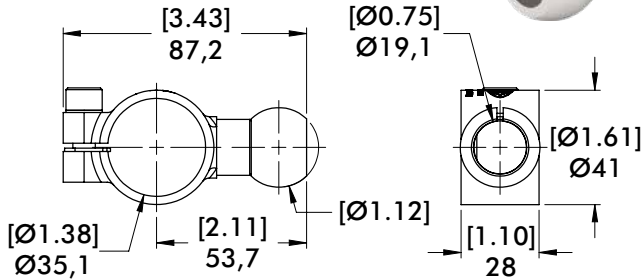
Accelerate® Press Shop Sheet Metal Grippers | Dimensions and Ordering Information

Side Ball and Apple Core Gripper Mounts

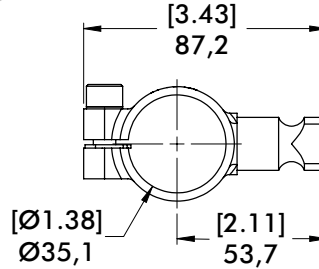
Side Ball



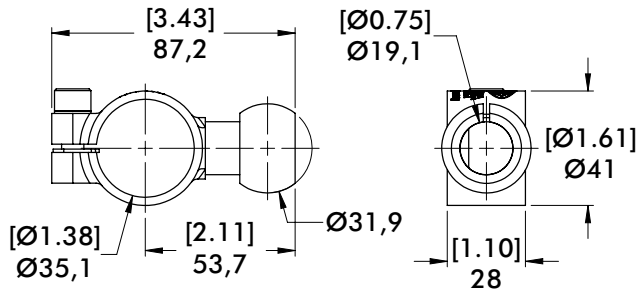
Apple Core



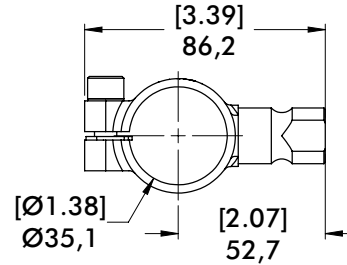
GT-84N1-B112-A



GT-84N1-19M-A

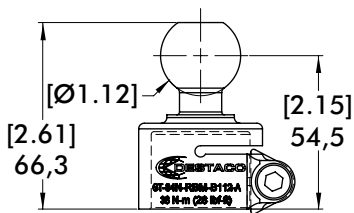


GT-84N1-32B-A

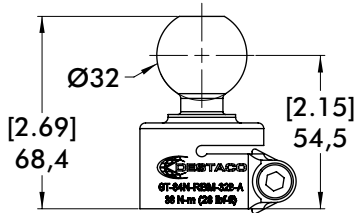


GT-84N1-20M-A

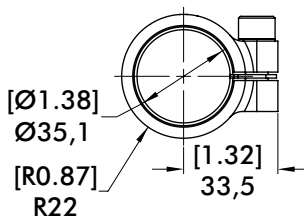
Rear Ball and Flange Gripper Mounts



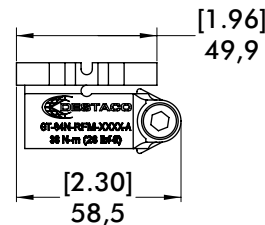
GT-84N-RBM-B112-A



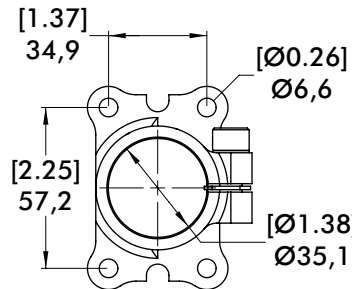
GT-84N-RBM-32B-A



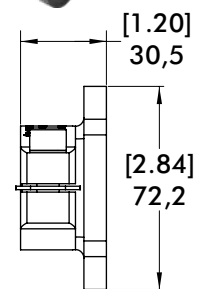
Rear Ball



Rear Flange



GT-84N-RFM-2213-A



Side Ball and Apple Core

- 1.125 in. (28.5mm) Side Ball
- 32mm Side Ball
- 19mm Applecore
- 20mm Applecore

Part Number

- GT-84N1-B112-A**
- GT-84N1-32B-A**
- GT-84N1-19M-A**
- GT-84N1-20M-A**

Rear Ball and Flange

- 1.125 in. (28.5mm) Rear Ball
- 32mm Rear Ball
- Rear Flange

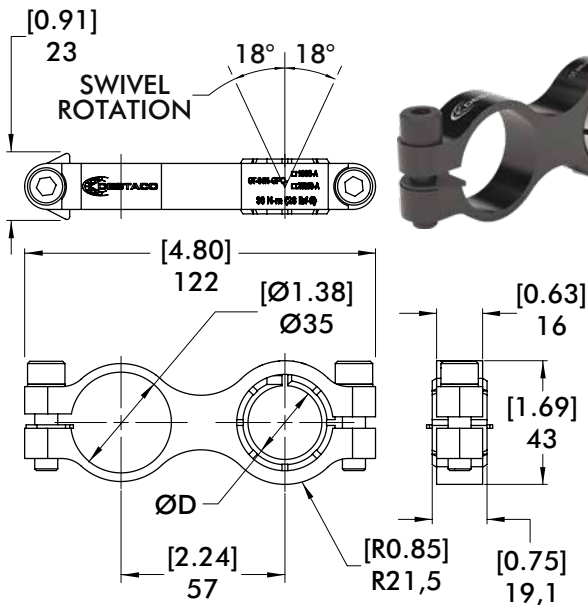
Part Number

- GT-84N-RBM-B112-A**
- GT-84N-RBM-32B-A**
- GT-84N-RFM-2213-A**

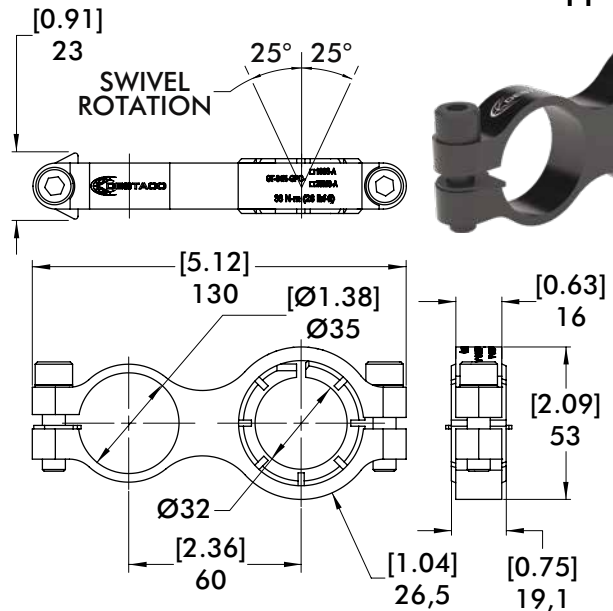
84N1 MOUNTS

Accelerate® Press Shop Sheet Metal Grippers | Dimensions and Ordering Information

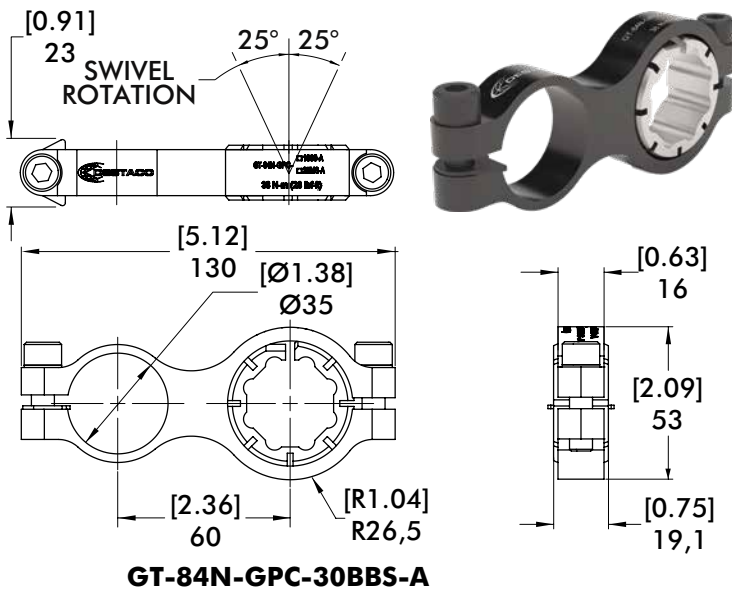
Parallel Swivel Gripper Mount



ØD=1.00 in. **GT-84N-GPC-100S-A**
 ØD=25mm **GT-84N-GPC-25MS-A**



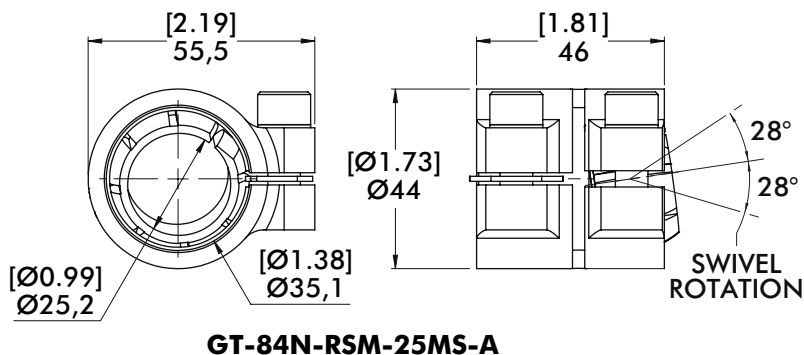
GT-84N-GPC-125S-A



GT-84N-GPC-30BBS-A

Parallel Swivel Mount	Part Number
1" Swivel Mount	GT-84N-GPC-100S-A
1-1/4" Swivel Mount	GT-84N-GPC-125S-A
25mm Swivel Mount	GT-84N-GPC-25MS-A
30mm Body Builder Swivel Mount	GT-84N-GPC-30BBS-A

Rear Clamp Swivel Mount



GT-84N-RSM-25MS-A

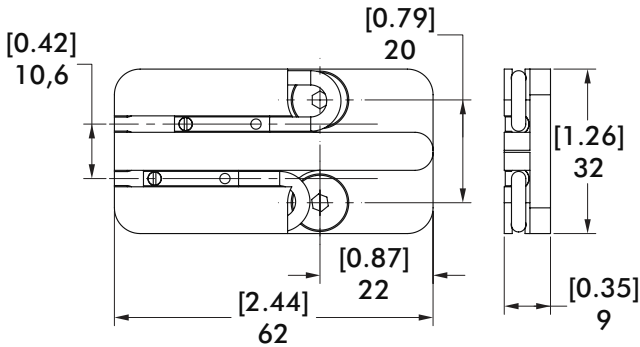


Rear Swivel Mount	Part Number
25mm Swivel Mount	GT-84N-RSM-25MS-A

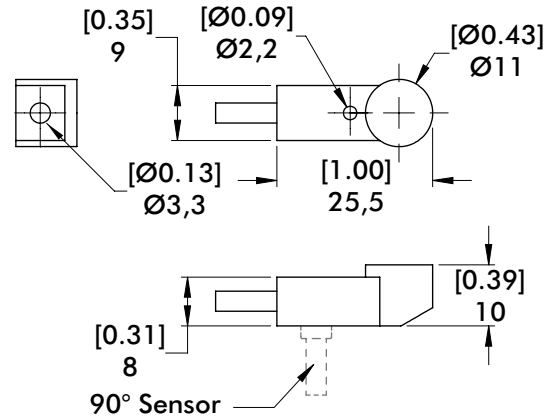
84N1 SENSING OPTIONS

Accelerate® Press Shop Sheet Metal Grippers | Dimensions and Ordering Information

Side Mount Magneto-resistive Sensor



Jaw Part Present Sensor

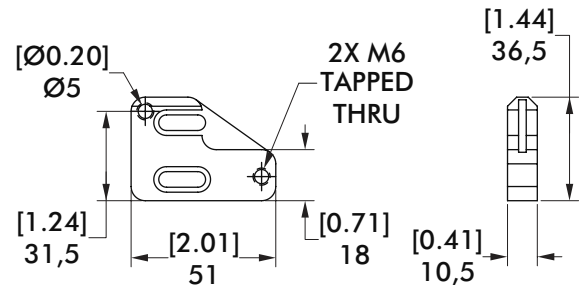
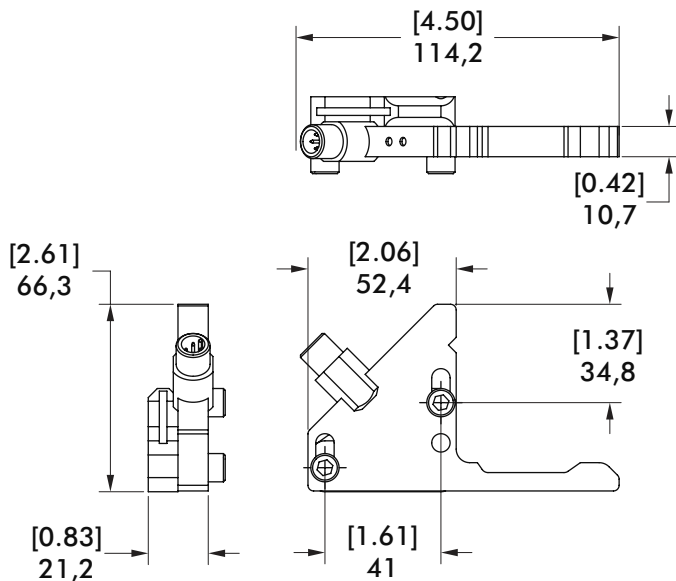


Description	Part Number
PNP Magneto-resistive Sensor Kit	8EA-1035-1
NPN Magneto-resistive Sensor Kit	8EA-1036-1
4mm PNP Magneto-resistive Sensor	OISP-017
4mm NPN Magneto-resistive Sensor	OISN-017

Description	Part Number
PNP Inductive Part Present Sensor	8EA-1024-1
NPN Inductive Part Present Sensor	8EA-1025-1
90° PNP Inductive Part Present Sensor*	8EA-1027-1
90° NPN Inductive Part Present Sensor*	8EA-1028-1

*for 84N1 PC Jaw Style only.

Infrared Part Present Sensor and Mounting Adapter

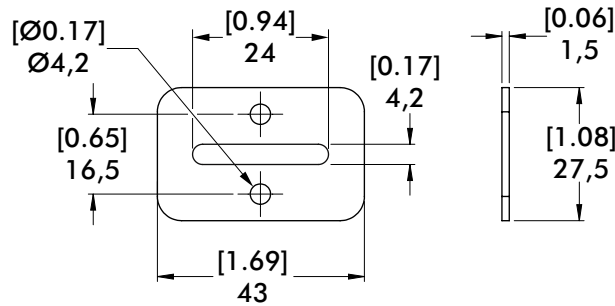


Description	Part Number
Infrared Part Present Sensor Kit	8EA-1023-1

84N1 ACCESSORIES

Accelerate® Press Shop Sheet Metal Grippers | Dimensions and Ordering Information

Sheet Stop Option



Description

Sheet Stop Kit

Part Number

8MH-1003-1

Includes socket head cap mounting screws

Specifications

Specification	Unit	84N1
Grip Force at 5 bar	N [lbs]	Up to 1000 [225]
Weight (FA Option, No Tips)	Kg [lb]	0.27 [0.6]
Size L x W x H (open)	mm [in]	110 x 43 x 64 [4.33] x [1.69] x [2.52]
Actuation Time	ms	33
Minimum Operating Pressure	bar [psi]	3 [44]
Opening Angles		30°, 45°, 60°, 75°
Piston Ø	mm [in]	25 [0.98]
Air Consumption/Cycle	L [in ³]	0,015 [0.92]
Temperature Range	C° [F°]	-35° to 80° [-31° to 176]