

## 82M and TCC Series

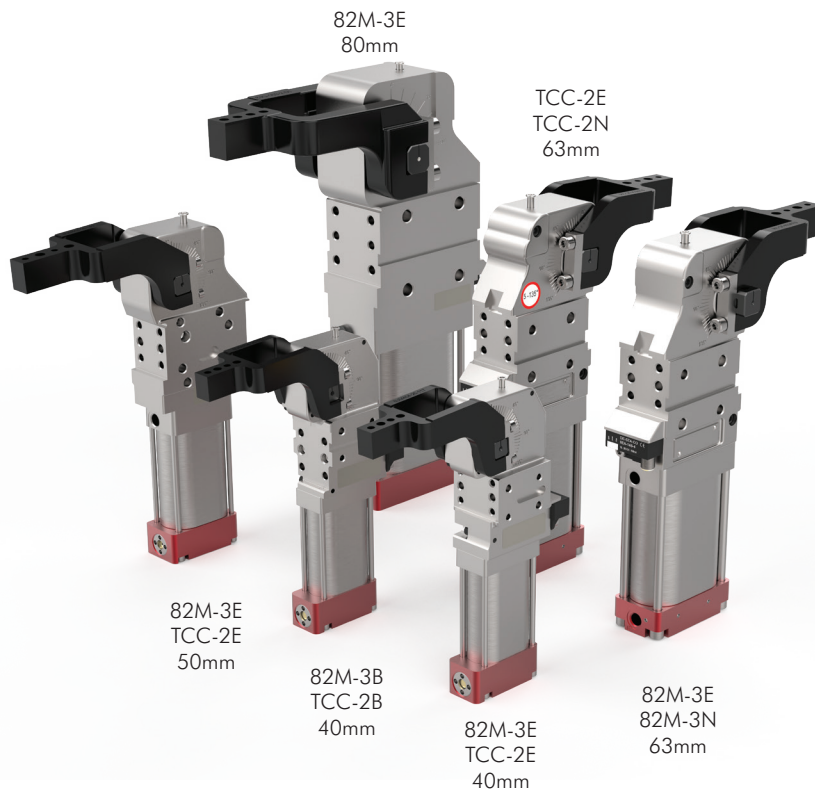
### Enclosed Power Clamps

Destaco Power Clamps are designed to meet the rigorous requirements of automotive and sheet metal processing applications, while lasting millions of cycles.

The 82M Series Power Clamps are built to withstand the harshest of manufacturing environments and designed to deliver superior clamping power with unparalleled flexibility.

The TCC Series adds greater flexibility by offering tolerance compensation, allowing the clamp to self adjust within three degrees of clamp arm moving without the need to use shims.

When it comes to holding and positioning workpieces perfectly in place, look no further than Destaco's most flexible and complete family of enclosed power clamps to get the job done.



Models Shown with U-Type Center Arms  
(Sold separately)

### Product Highlights/Options

- Field adjustable arm opening angle
- Enclosed aluminum body
- Optional U-Arms and lateral arms available
- Available optional hand lever (82M-3E only)



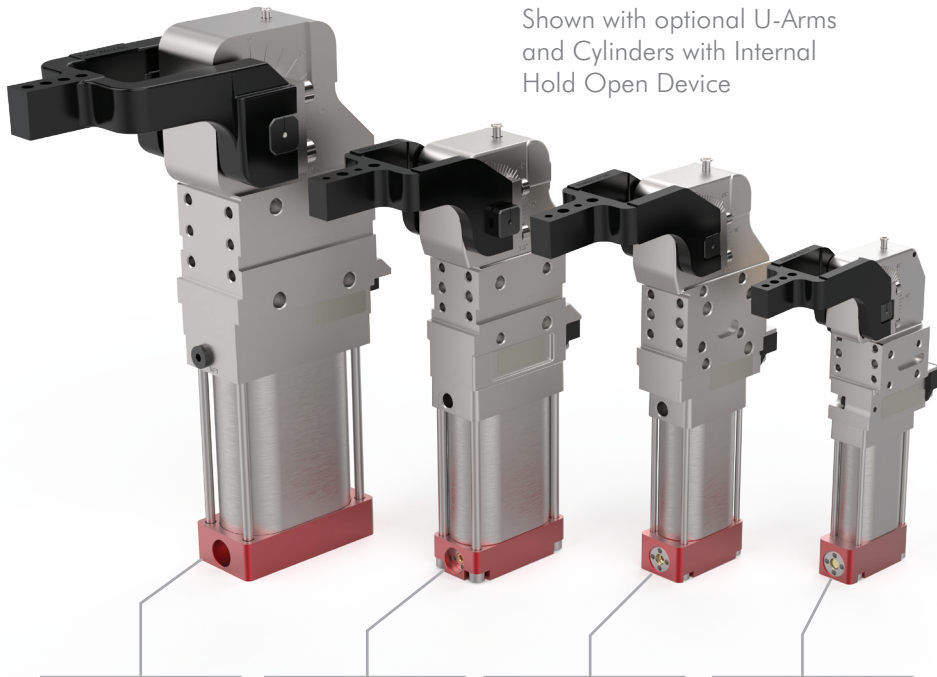
### Features, Markets and Applications

|                           |  |   |  |
|---------------------------|--|---|--|
| <p>LOW/NO MAINTENANCE</p> | <ul style="list-style-type: none"> <li>• Easily adjust arm opening angle with one tool</li> <li>• Hand lever is adjustable for better ergonomics</li> <li>• Optional cylinders provides safe holding capabilities</li> </ul>           | AUTOMOTIVE<br>INDUSTRIAL<br>AEROSTRUCTURE<br>CONSUMER GOODS | ASSEMBLY<br>WELDING<br>FIXTURE/TESTING |
| <p>PERFORMANCE</p>        | <ul style="list-style-type: none"> <li>• Infinite arm opening adjustment (up to 135°)</li> <li>• Manual unlocking in case of air pressure loss</li> <li>• Internal hold open device is available for safe opening operation</li> </ul> |   |  |
| <p>INTERCHANGEABLE</p>    | <ul style="list-style-type: none"> <li>• Multiple mounting surfaces provide greater flexibility</li> <li>• Conform to NAAMS and Euro mounting standards</li> <li>• 40mm "B" mount shares same mount pattern as 50 and 63mm</li> </ul>  |   |  |

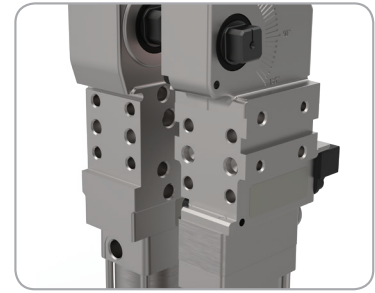
# 82M AND TCC SERIES

Enclosed Power Clamps | Models

## 82M Series Enclosed Power Clamp



Shown with optional U-Arms and Cylinders with Internal Hold Open Device



"B" Front Mount available for 82M and TCC size 40mm

Same mounting pattern as size 50 and 63mm



NAAMS Lateral Mounting available on 82M and TCC in addition to narrow, wide and NAAMS Clamp Arm Shafts

**80mm**

Max Holding Torque  
3000 Nm  
Max Clamping Torque  
850 Nm at 5bar

**63mm**

Max Holding Torque  
1800 Nm  
Max Clamping Torque  
420 Nm at 5bar

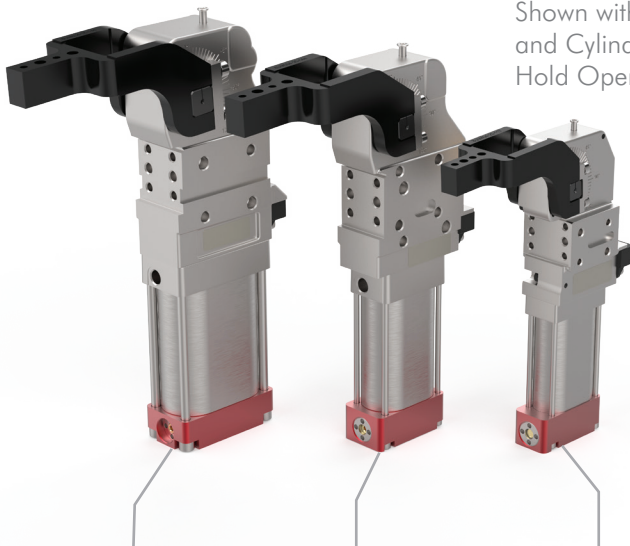
**50mm**

Max Holding Torque  
1300 Nm  
Max Clamping Torque  
270 Nm at 5bar

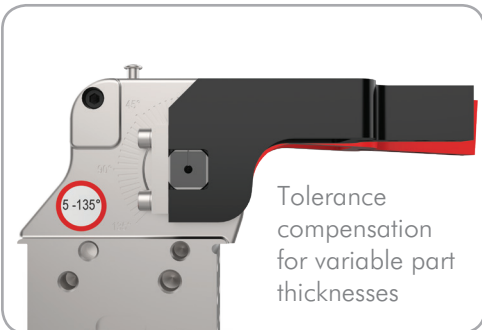
**40mm**

Max Holding Torque  
380 Nm  
Max Clamping Torque  
120 Nm at 5bar

## TCC Tolerance Compensating Power Clamp



Shown with optional U-Arms and Cylinders with Internal Hold Open Device



Tolerance compensation for variable part thicknesses

**63mm**

Max Holding Torque  
295 Nm  
Max Clamping Torque  
295 Nm at 5bar

**50mm**

Max Holding Torque  
175 Nm  
Max Clamping Torque  
175 Nm at 5bar

**40mm**

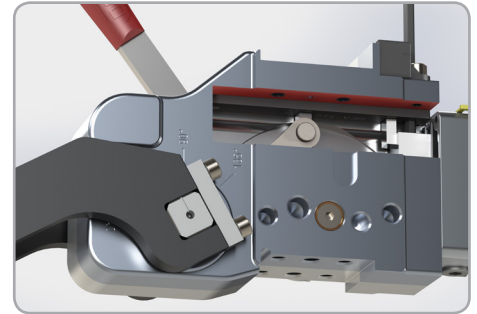
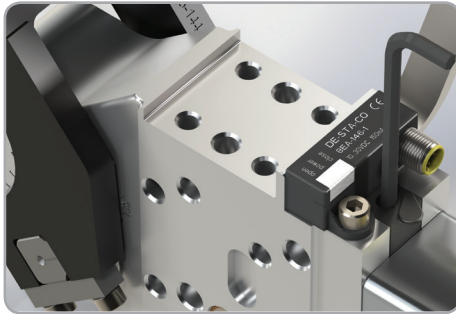
Max Holding Torque  
85 Nm  
Max Clamping Torque  
85 Nm at 5bar

- Tolerance compensation for variable sheet metal thicknesses within three degrees of arm movement
- There is no need for shimming

# 82M AND TCC SERIES

Enclosed Power Clamps | Arm Opening and Cylinders

## Adjusting the Arm Opening Angle



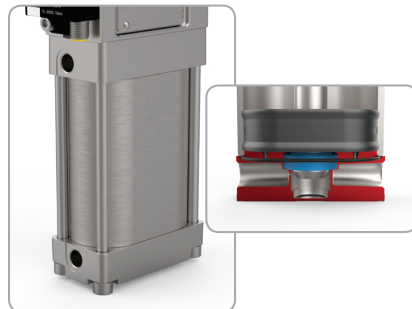
Easily adjust arm opening angle with an M5 Allen wrench.

- Move clamp arm to full open position.
- Using Allen wrench, release mechanism (leave Allen wrench in place).
- Move clamp arm to desired opening.
- Tighten to 20 Nm.

## Cylinder Options

### Standard Cylinder

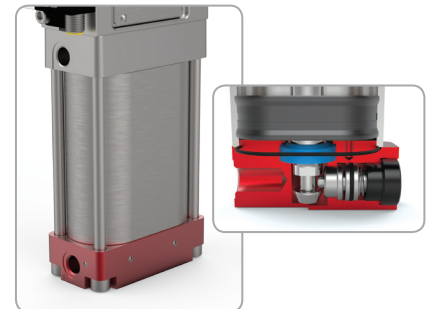
Available for 82M and TCC Series Clamps



### Cylinder with Internal Hold Open Device

Securely holds clamp in the open position

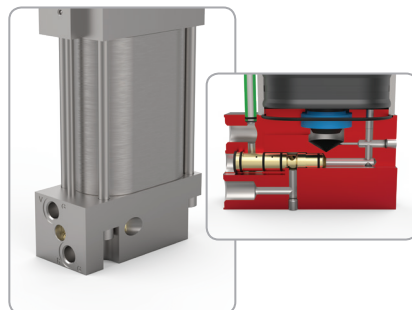
Available for 82M and TCC Series Clamps



### Cylinder with Unlock-able Return Valve

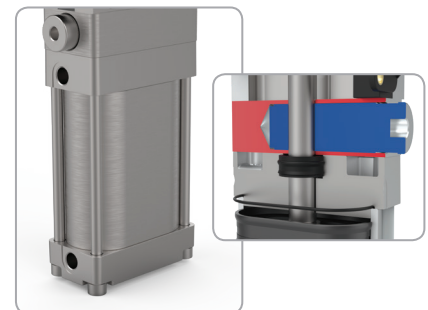
Pneumatically holds clamp arm in the closed position when air is released

Only available for TCC Series Clamps



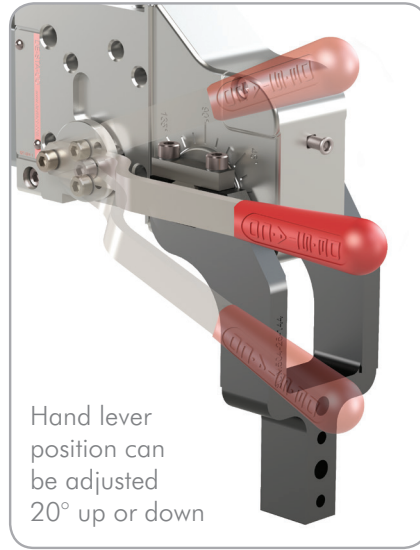
### Cylinder with Rod Locking Device

Uses friction to clamp rod at any point between open and closed positions



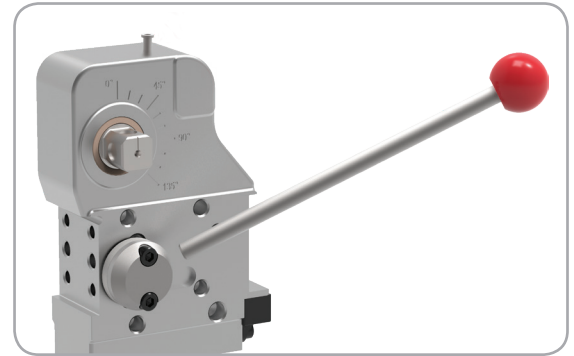
## Enclosed Power Clamp Hand Lever (82M-3E Models Only)

### Standard Adjustable Hand Lever



- Hand lever position is adjustable for improved ergonomics
- Handle can be mounted on the left or right side

### Weldable Hand Lever

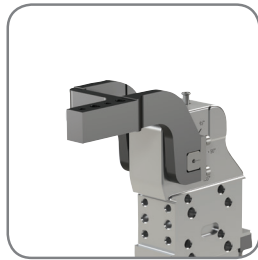


- Hand lever can be welded into a permanent position.
- Handle can be mounted on the left or right side

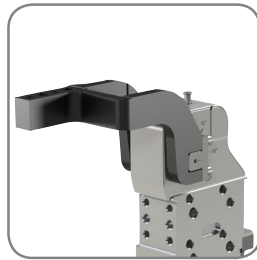
## Clamping Arms Options (Ordered Separately)



U-Type Center Arms



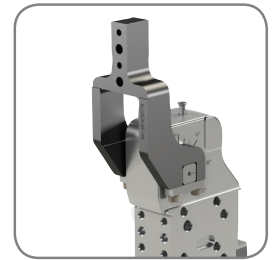
U-Type Offset Arms (Left)



U-Type Offset Arms (Right)

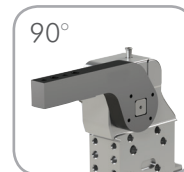


Euro and NAAMS Lateral Arms



U-Type Center Arm Mounted at 180° Clamping Position

- U-type arms can be mounted in 90° or 180° clamping position
- Lateral arms can be mounted in 90°, 180°, and 270° clamping position
- Lateral arms can be mounted on the right or left side
- Lateral arms can be mounted inverted for reversed clamping operation



Dimensions and technical information are subject to change without notice.

**GERMANY**  
+49-6171-705-0  
europe@destaco.com

**FRANCE**  
Tel: +33-4-7354-5001  
france@destaco.com

**UNITED KINGDOM**  
+44-1902-797980  
uk@destaco.com

**SPAIN**  
+34-936361680  
spain@destaco.com

**NETHERLANDS**  
+31-297285332  
benelux@destaco.com

**CHINA**  
+86-21-6081-2888  
china@destaco.com

**THAILAND**  
+66-2-326-0812  
asia@destaco.com

**INDIA**  
+91-80-41123421-426  
india@destaco.com

**USA**  
+1-888-DESTACO  
+1-248-836-6700  
northamerica@destaco.com