

PRECISION INDEXING SOLUTIONS

Table of Contents

INDEXERS

Servo Positioners



GTB Series
Globoidal (Roller Gear)
Servo Positioner.....IN-SRV-1



RSD Series
Rotary Servo Drives.....IN-SRV-39

Mechanical Indexers



RDM Series
Rotary Index Drive IN-MCH-2



RD Series
Roller Dial Index Drive..... IN-MCH-18



E Series
Heavy-Duty Index Drive IN-MCH-30



RA Series
Right Angle Index Drive IN-MCH-42



RGD/RGS Series
Roller Gear Index Drive IN-MCH-52



P Series
Parallel Shaft/Flange Drive.... IN-MCH-72



RNG Series
Ring Drive Dial Indexer.....IN-MCH-84

OVERLOAD CLUTCHES



Overload Clutches
Output Overload..... IN-CLU-1

CUSTOM CAMS



Custom Cams
Cam Design Solutions IN-CAM-1

CONVEYORS



Rite-Link Series
Thin-Profile.....IN-CNV-1



Precision Link Series
Table-TopIN-CNV-4



Precision Link Series
Heavy-Duty IN-CNV-16

PARTS HANDLERS



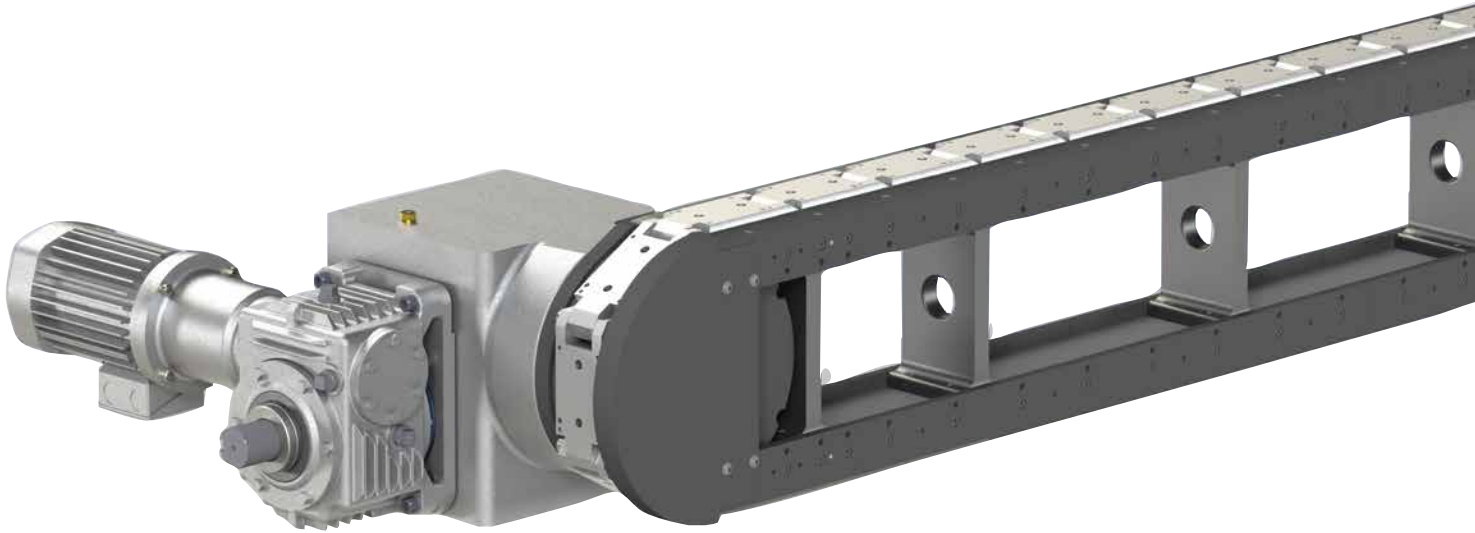
LPP Series
Linear Part Handlers IN-PRT-2



RPP Series
Rotary Part Handlers IN-PRT-8

TABLE-TOP MODULAR CONVEYORS

Features | How To Order



Features:

CAMCO Modular Table Top Precision Link Conveyors are ideal for linear transfer applications with features including:

Modular frame design in fixed increment lengths facilitates quick assembly and delivery.

Table-Top or Base mounted

Available in carousel or over-under style

Precision positioning of parts for assembly or manufacturing processes

High-speed station-to-station parts transfer

Precision links with roller bearing cam followers for smooth transfer and long life.

Link lengths of 3.0", 4.5", and 6.0" meet most application requirements

Open frame design for pass-through of belting, linkages, electric and air supply components.

Optional bases, line shafts & tooling plates

Complete with motorized index drive system including overload protection.

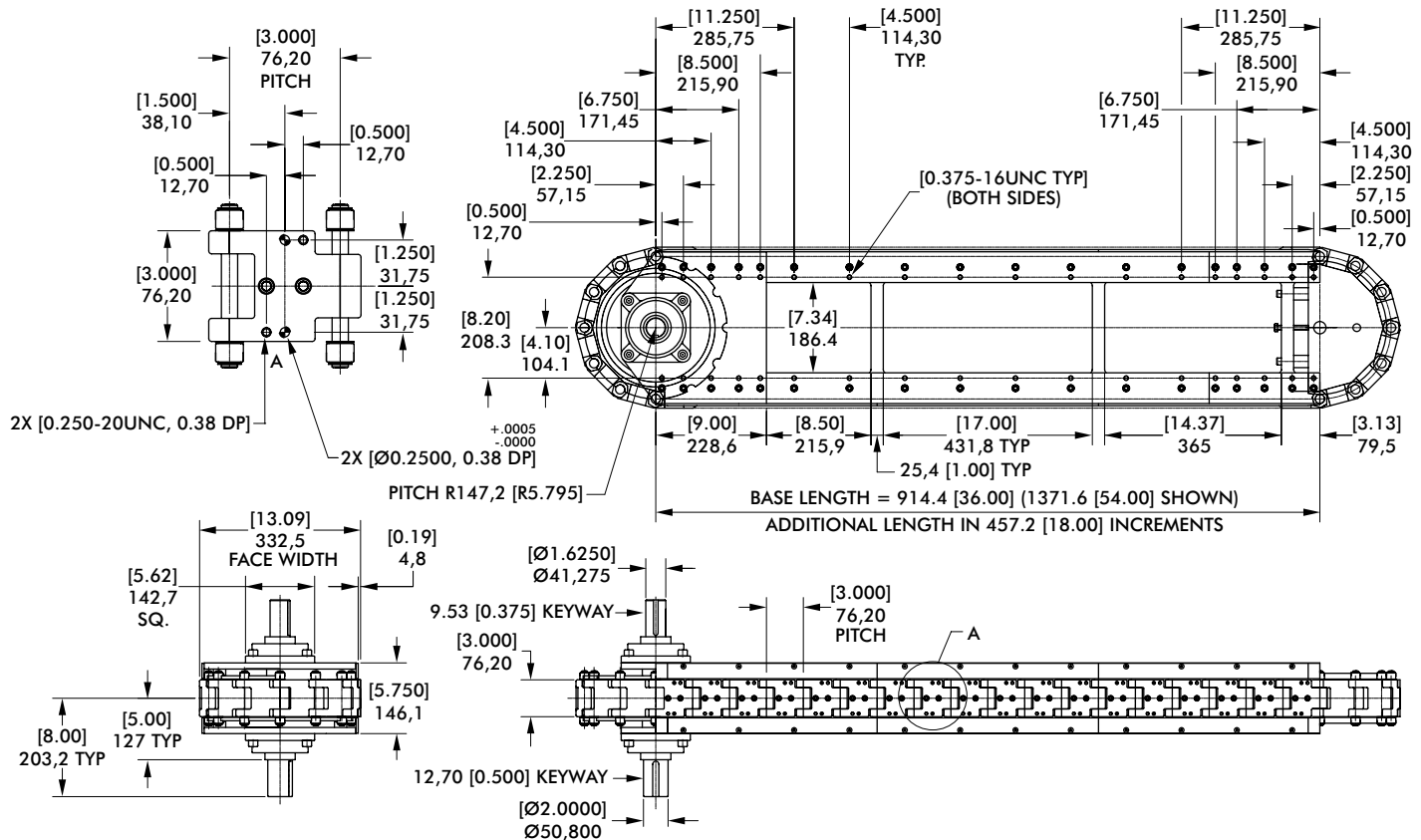
Table of Contents

3.0 Inch	3
4.5 Inch	5
6.0 Inch	7
Conveyor Options	9

3.0 INCH SERIES

Table-Top Modular Conveyors | Dimensions and Configurations

Modular Conveyor (module only)



Modular Conveyor (drive package)

Standard Drive Package

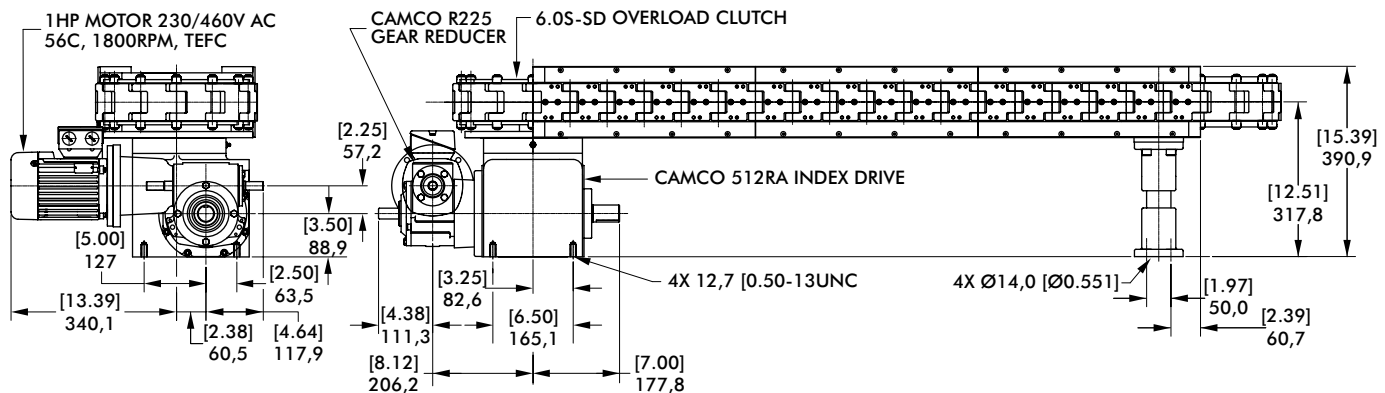
- 512RA Index Drive
- R225 Gear Reducer
- 6.0FC-SD Overload Clutch (Shaft Drive)
- 6.0S-SD Overload Clutch (Direct Drive)
- 1 HP high-cycling, performance AC Motor
- IM-pAC Motor Control

Heavy-Duty Drive Package

- 662RA Index Drive
- 7300C Gear Reducer
- 11FC-SD Overload Clutch (Shaft Drive)
- 6.0-SD Overload Clutch (Direct Drive)
- 1 HP high-cycling, performance AC Motor
- IM-pAC Motor Control

Index Distance mm [in]	Indexer Stops
76,2 [3.00]	12
152,4 [6.00]	6
228,6 [9.00]	4
304,8 [12.00]	3

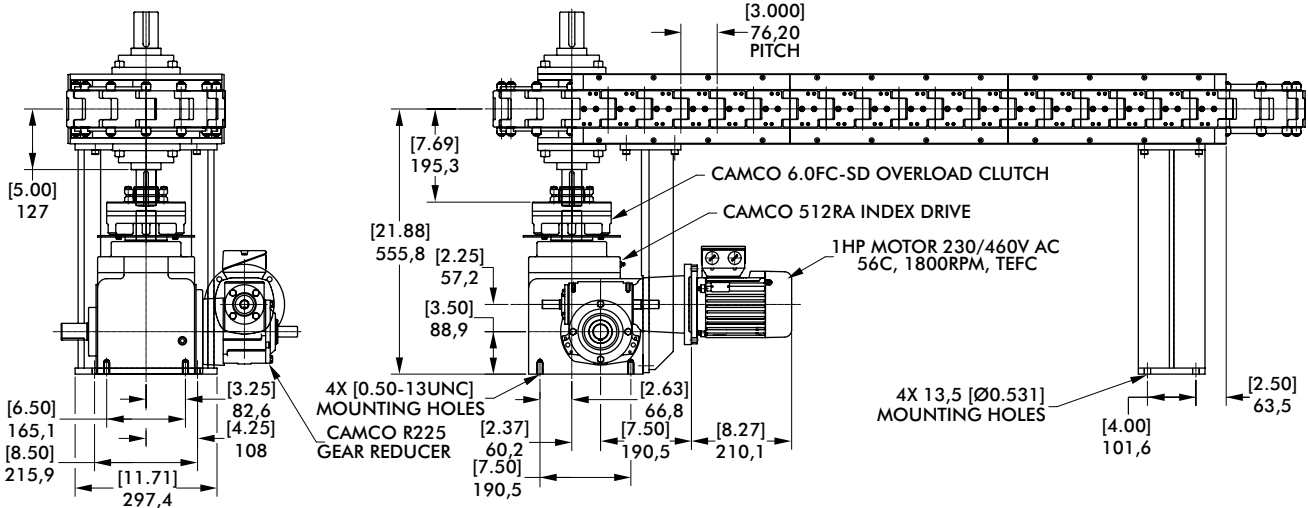
Direct Drive Carousel



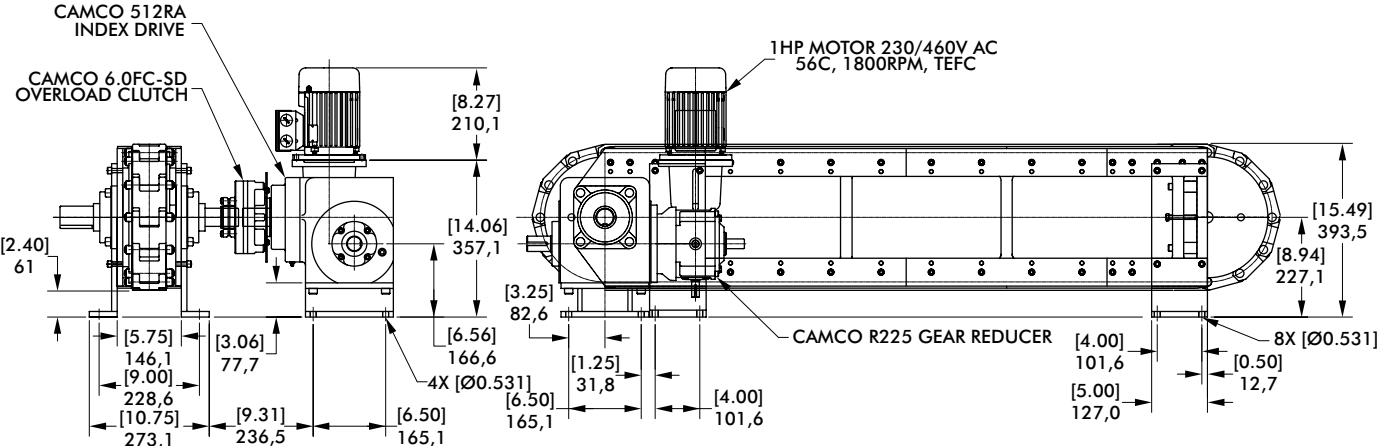
3.0 INCH SERIES

Table-Top Modular Conveyors | Configurations

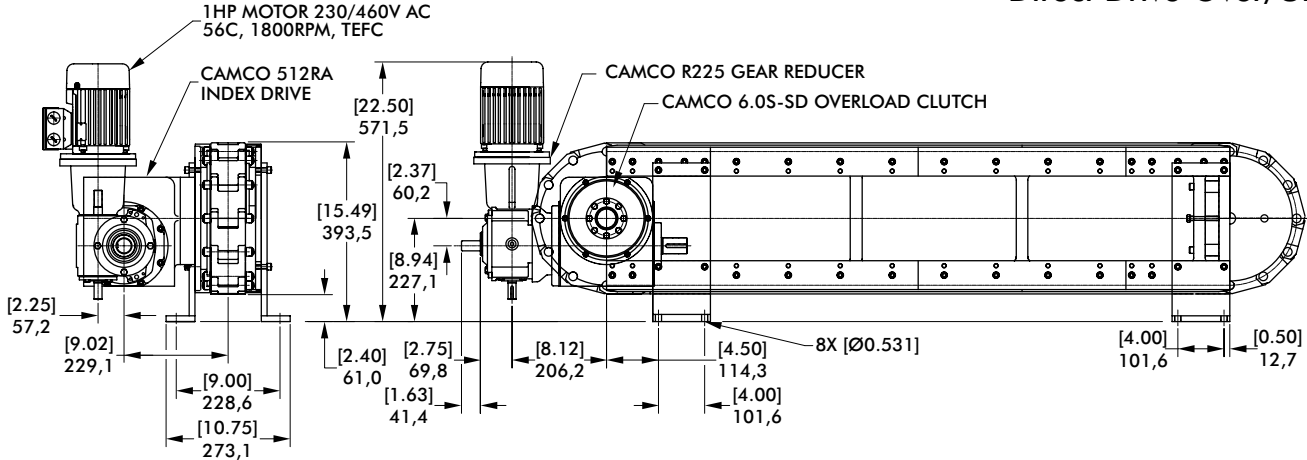
Shaft Drive Carousel



Shaft Drive Over/Under



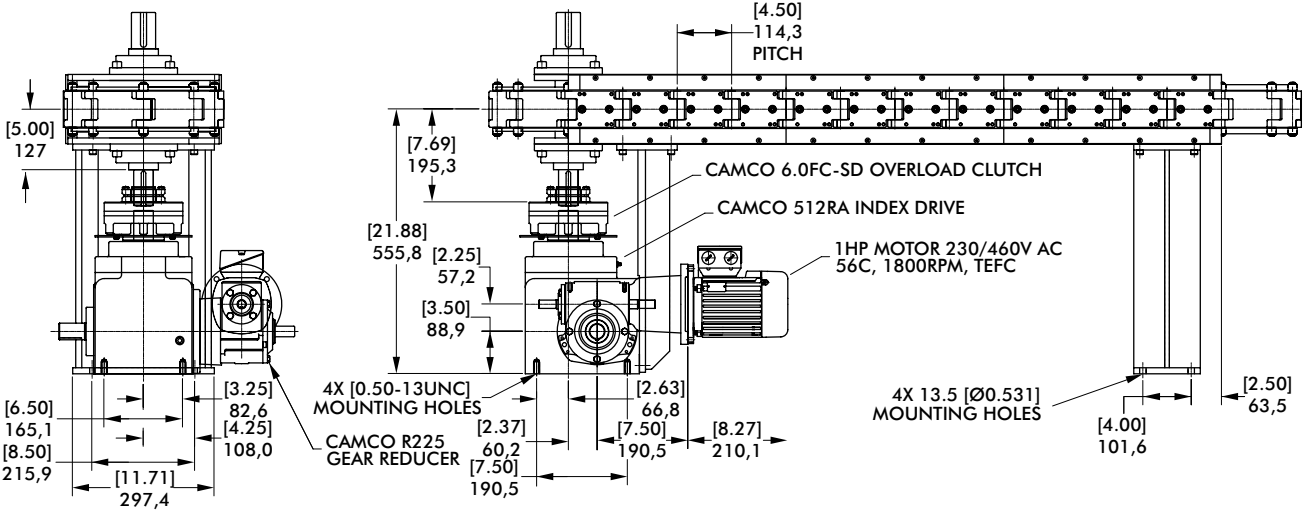
Direct Drive Over/Under



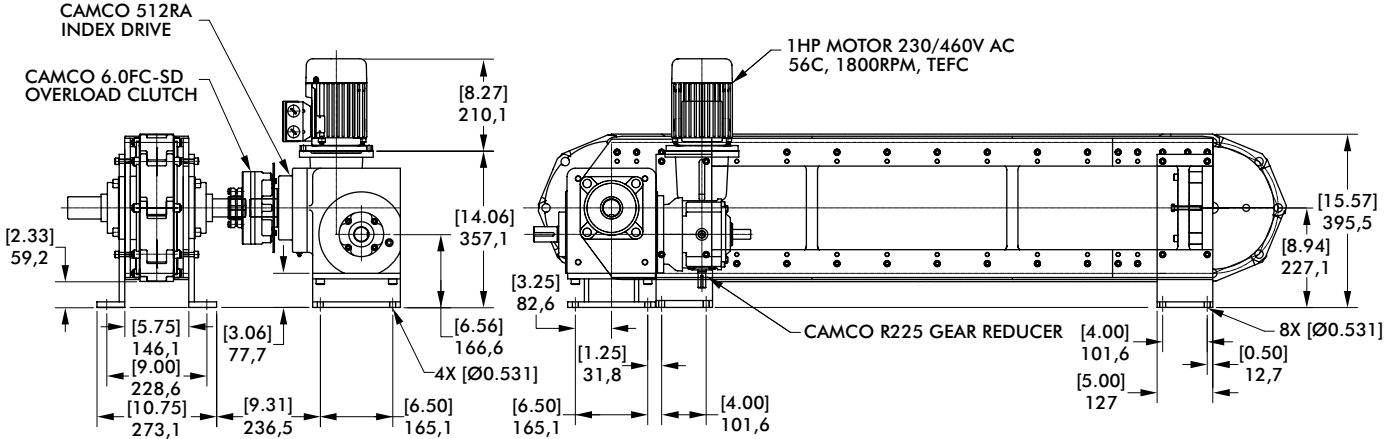
4.5 INCH SERIES

Table-Top Modular Conveyors | Configurations

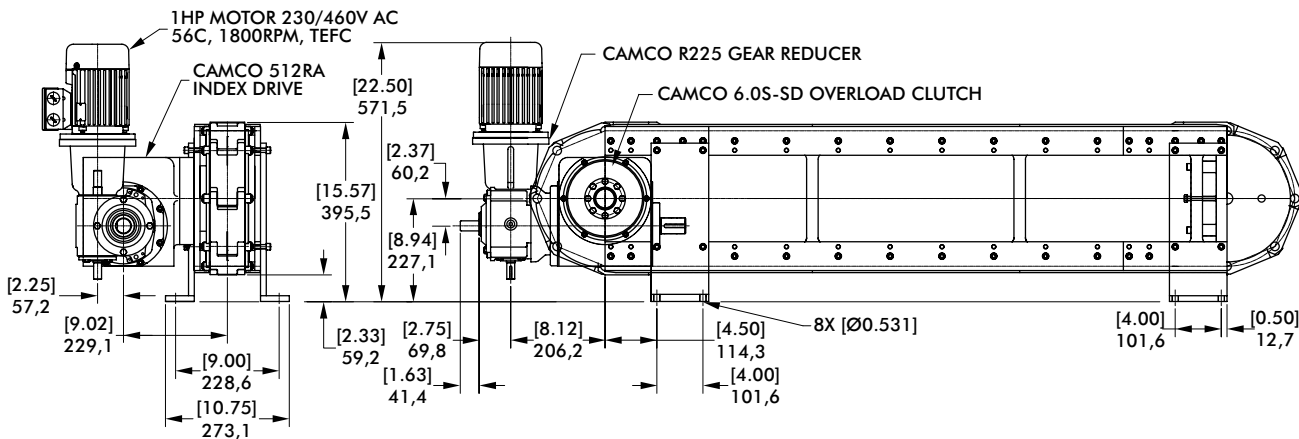
Shaft Drive Carousel



Shaft Drive Over/Under



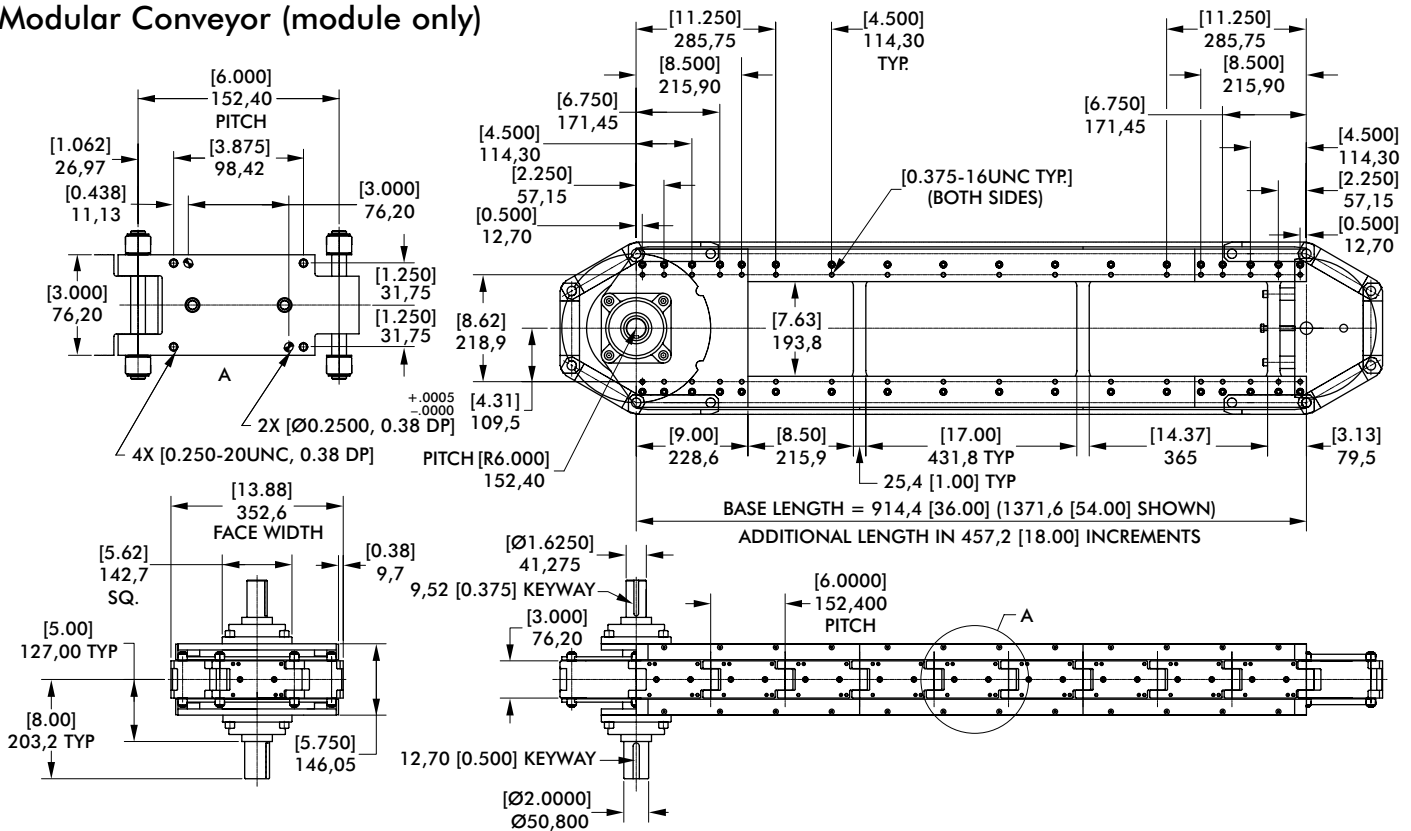
Direct Drive Over/Under



6.0 INCH SERIES

Table-Top Modular Conveyors | Dimensions and Configurations

Modular Conveyor (module only)



Modular Conveyor (drive package)

Standard Drive Package

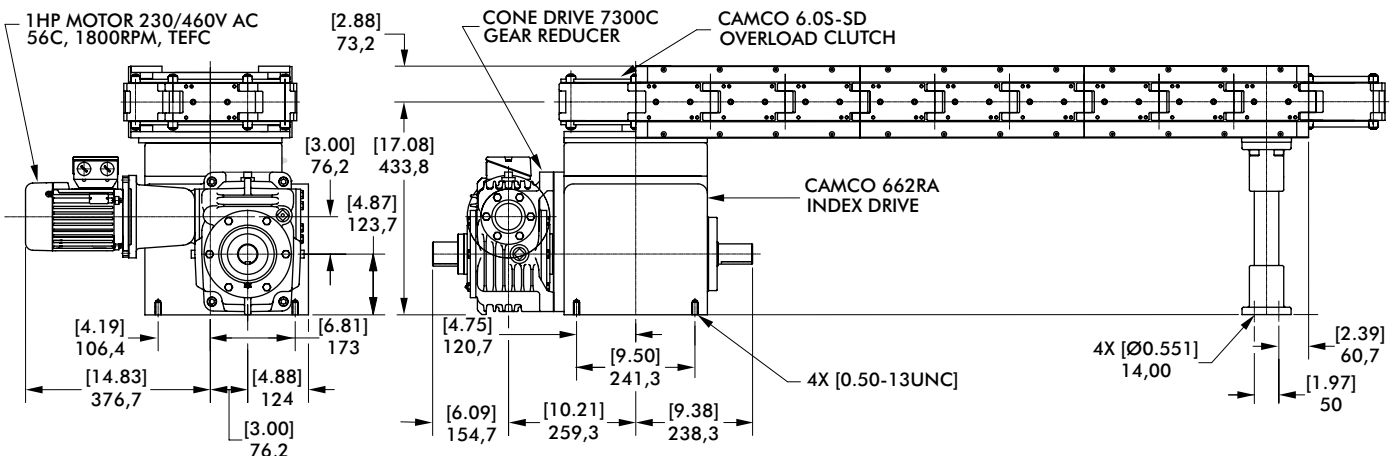
- 662RA Index Drive
- 7300C Gear Reducer
- 11FC-SD Overload Clutch (Shaft Drive)
- 6.0S-SD Overload Clutch (Direct Drive)
- 1 HP high-cycling, performance AC Motor
- IM-pAC Motor Control

Heavy-Duty Drive Package

- 800RD Index Drive
- 7300C Gear Reducer
- 25FC-SD Overload Clutch
- 1 HP high-cycling, performance AC Motor
- IM-pAC Motor Control

Index Distance mm [in]	Indexer Stops
152,4 [6.00]	6
304,8 [12.00]	3
457,2 [18.00]	2

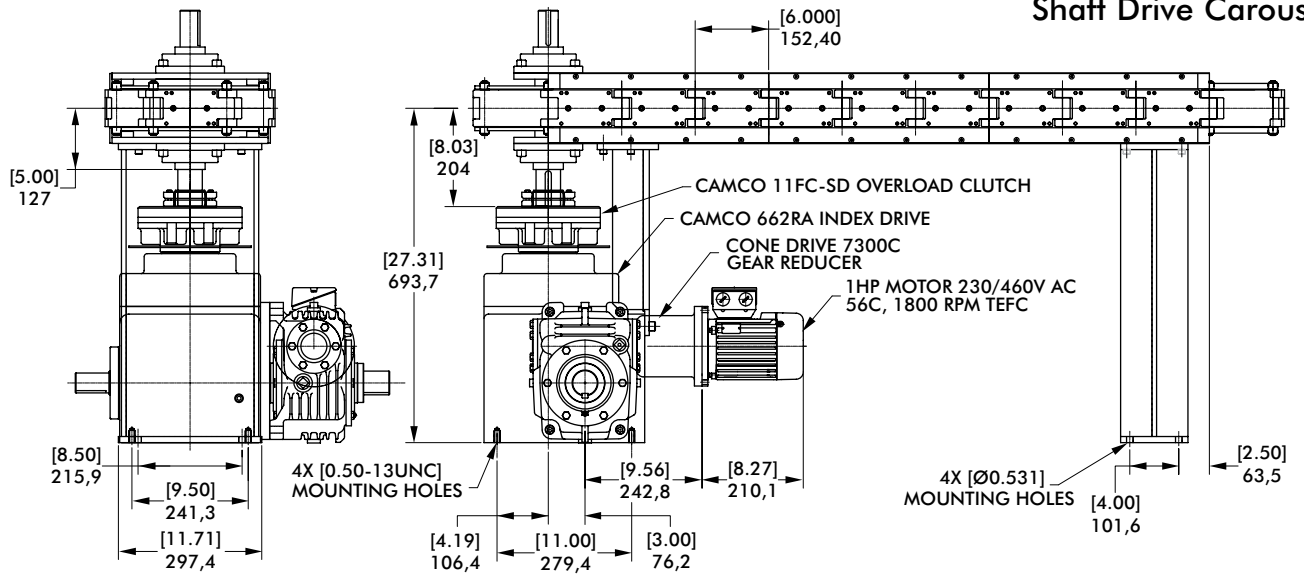
Direct Drive Carousel



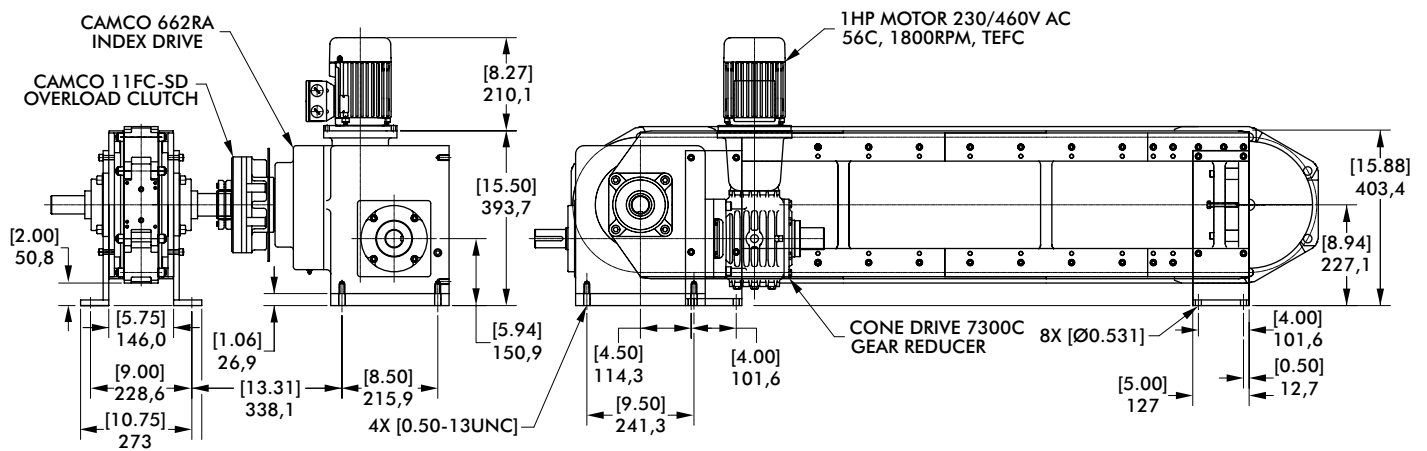
6.0 INCH SERIES

Table-Top Modular Conveyors | Configurations

Shaft Drive Carousel



Shaft Drive Over/Under



Direct Drive Over/Under

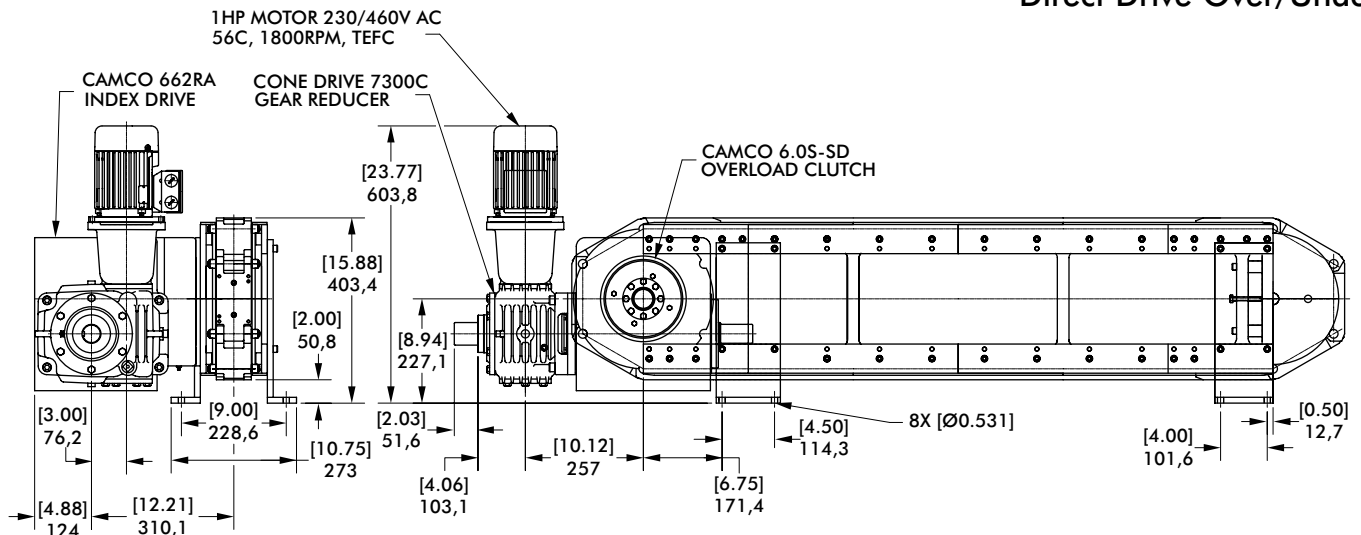
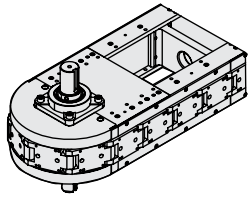
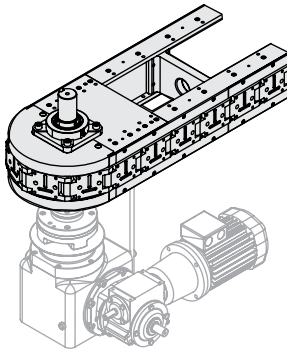


TABLE-TOP MODULAR CONVEYORS

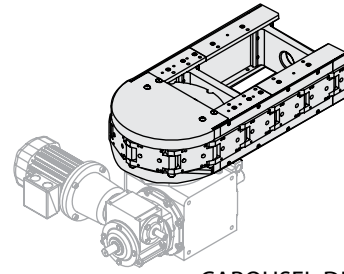
Conveyor Types



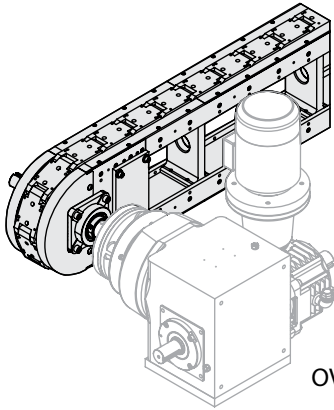
MODULE ONLY



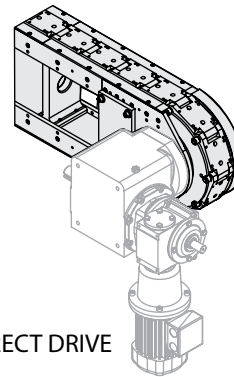
CAROUSEL-SHAFT DRIVEN



CAROUSEL-DIRECT DRIVEN

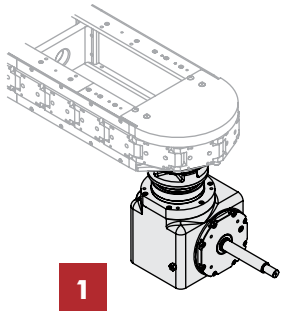


OVER-UNDER SHAFT DRIVEN

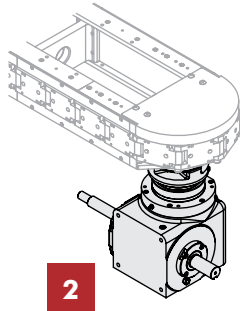


OVER-UNDER DIRECT DRIVE

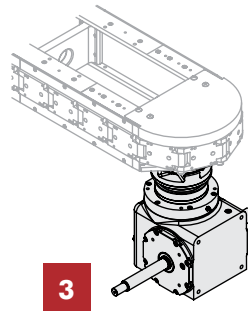
Carousel Indexer Position



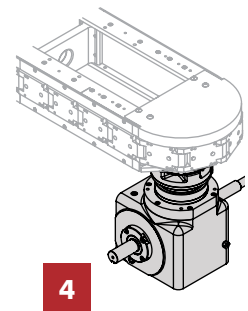
1



2



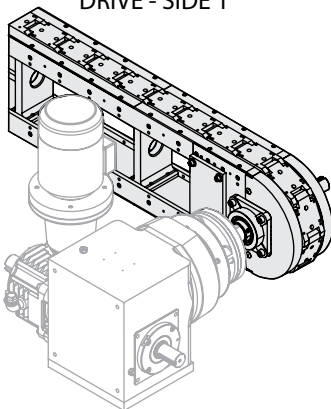
3



4

Over/Under Side

DRIVE - SIDE 1



DRIVE - SIDE 2

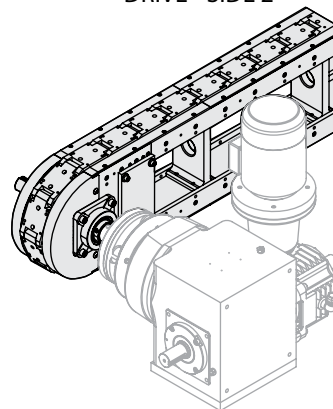
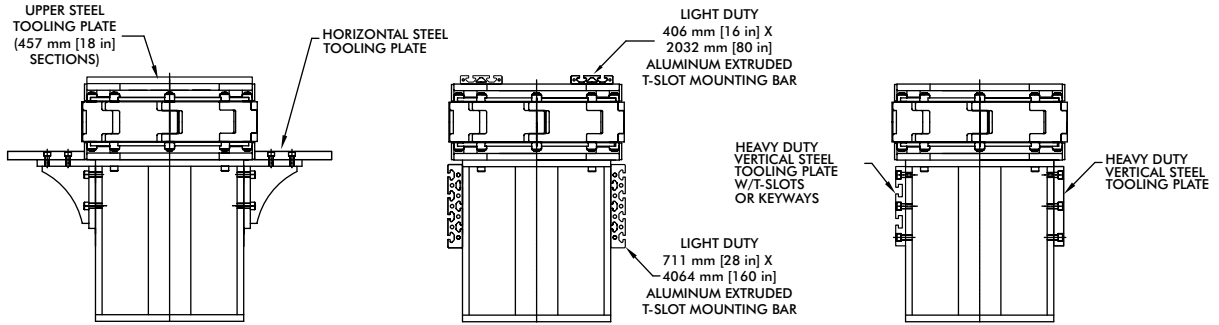


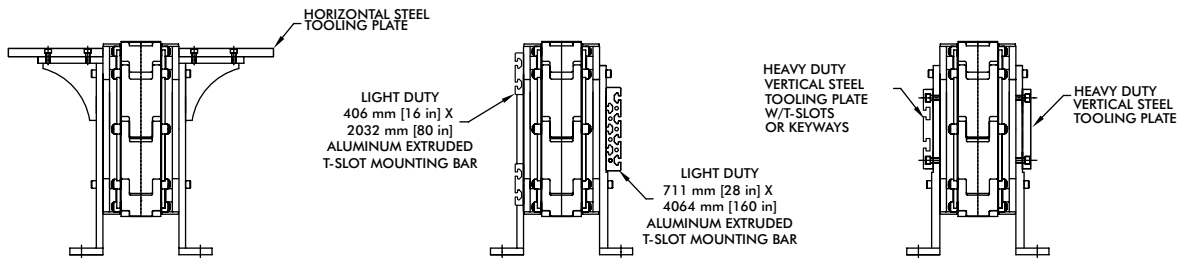
TABLE-TOP MODULAR CONVEYORS

Options

Tooling Plate Options Carousel



Tooling Plate Options Over/Under



Support Leg Options

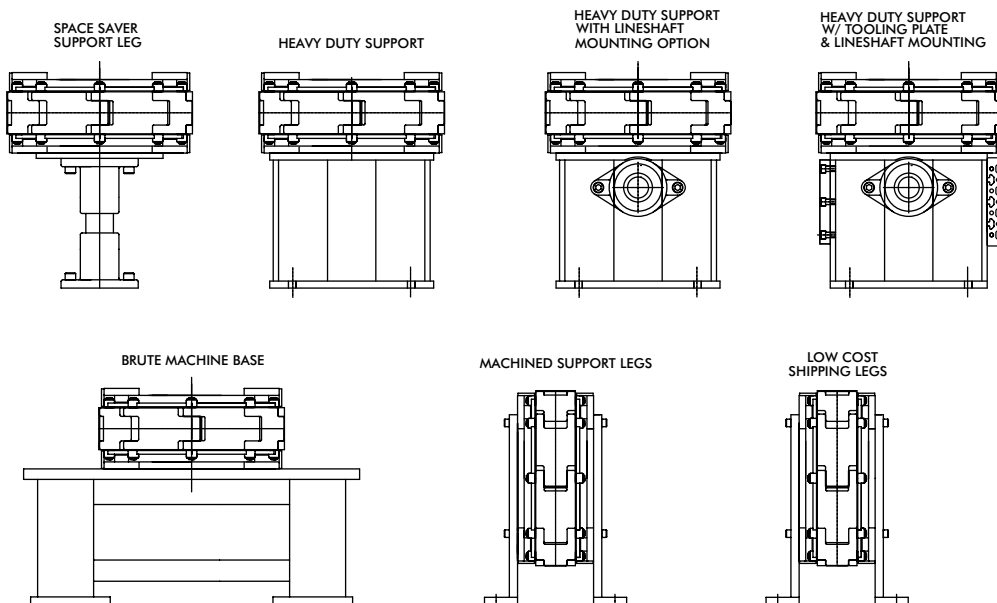
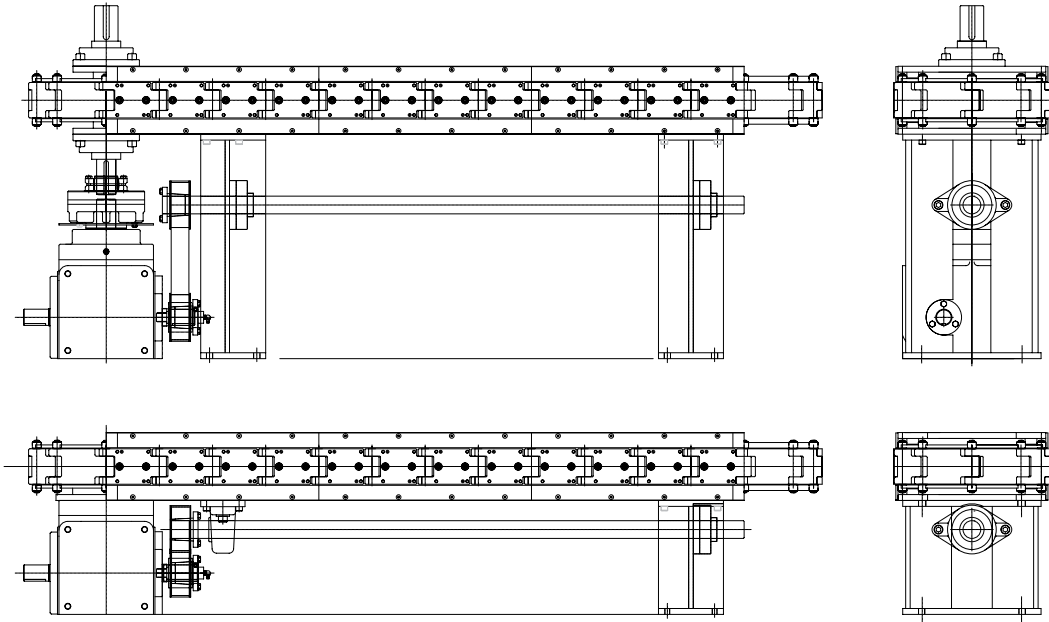


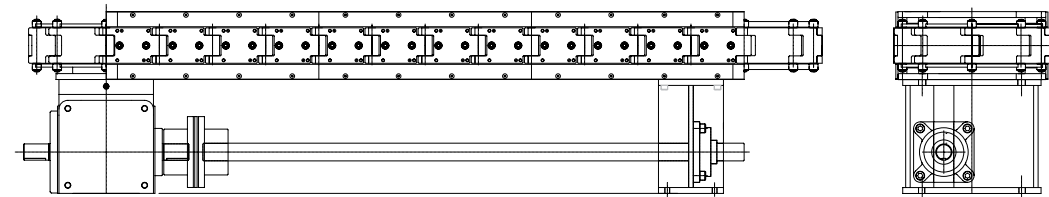
TABLE-TOP MODULAR CONVEYORS

Options

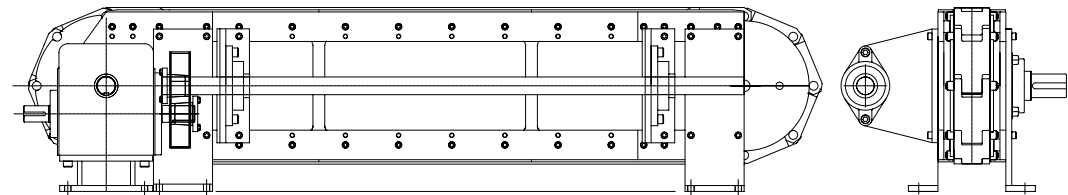
Lower Lineshaft Options Belt Driven



Lower Lineshaft Options Direct Driven



Drive Side Lineshaft Options Belt Driven



Drive Side Lineshaft Options Direct Driven

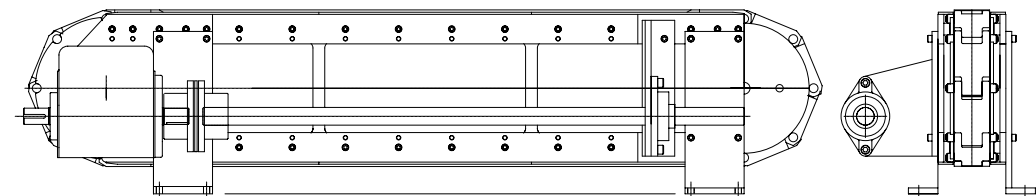


TABLE-TOP MODULAR CONVEYORS

