

89B SERIES

Pneumatic Swing Clamps | Product Overview

Features:

- Lightweight and robust, designed for several millions cycles
- Can be mounted from the side or the top
- Sensor ready for T-slot style sensors
- Metric design
- Clamp arm sold separately

Applications:

- Assembly
- Welding
- Light machining

Also Available:

See page MC-PSC-17 for clamping arms
See page MC-PSC-40 for sensing options

Series 89B



Technical Information

| Model | Swing Direction | Total Stroke [in]mm S | Stroke During Rotation [in]mm S1 | Vertical Clamp Stroke [in]mm S2 | Clamping Force [lbf.] N† | Bore Size mm[in] | Air Consumption‡ [ft³]dm³ | Weight [lb.]kg | Replacement Seal Kit |
|--------------|-----------------|--------------------------|-------------------------------------|------------------------------------|-----------------------------|------------------|---------------------------|----------------|----------------------|
| 89B20-010-2R | RH | [0.79] | [0.39] | | [29] | [0.79] | [0.003] | [1.46] | 89B/E20-2-00 |
| 89B20-010-2L | LH | 20 | 10 | | 130 | 20 | 0,08 | 0,66 | |
| 89B32-010-2R | RH | [0.83] | [0.43] | [0.39] | [79] | [1.25] | [0.008] | [2.25] | 89B/E32-2-00 |
| 89B32-010-2L | LH | 21 | 11 | 10 | 350 | 32 | 0,22 | 1,02 | |
| 89B40-010-2R | RH | [0.94] | [0.55] | | [130] | [1.57] | [0.014] | [3.17] | 89B/E40-2-00 |
| 89B40-010-2L | LH | 24 | 14 | | 580 | 40 | 0,39 | 1,44 | |
| 89B50-025-2R | RH | [1.57] | [0.59] | [0.98] | [225] | [1.97] | [0.036] | [5.95] | 89B/E50-2-00 |
| 89B50-025-2L | LH | 40 | 15 | 25 | 1000 | 50 | 1,03 | 2,70 | |
| 89B63-008-2R | RH | [1.02] | [0.71] | [0.32] | [321] | [2.48] | [0.038] | [6.39] | 89B/E63-2-00 |
| 89B63-008-2L | LH | 26 | 18 | 8 | 1430 | 63 | 1,08 | 2,90 | |

† with standard clamping arm at 6bar [87psi]. ‡ per double stroke at 6bar [87psi]

Operating Pressure Range: 3bar [45psig] to 6bar [87psig]

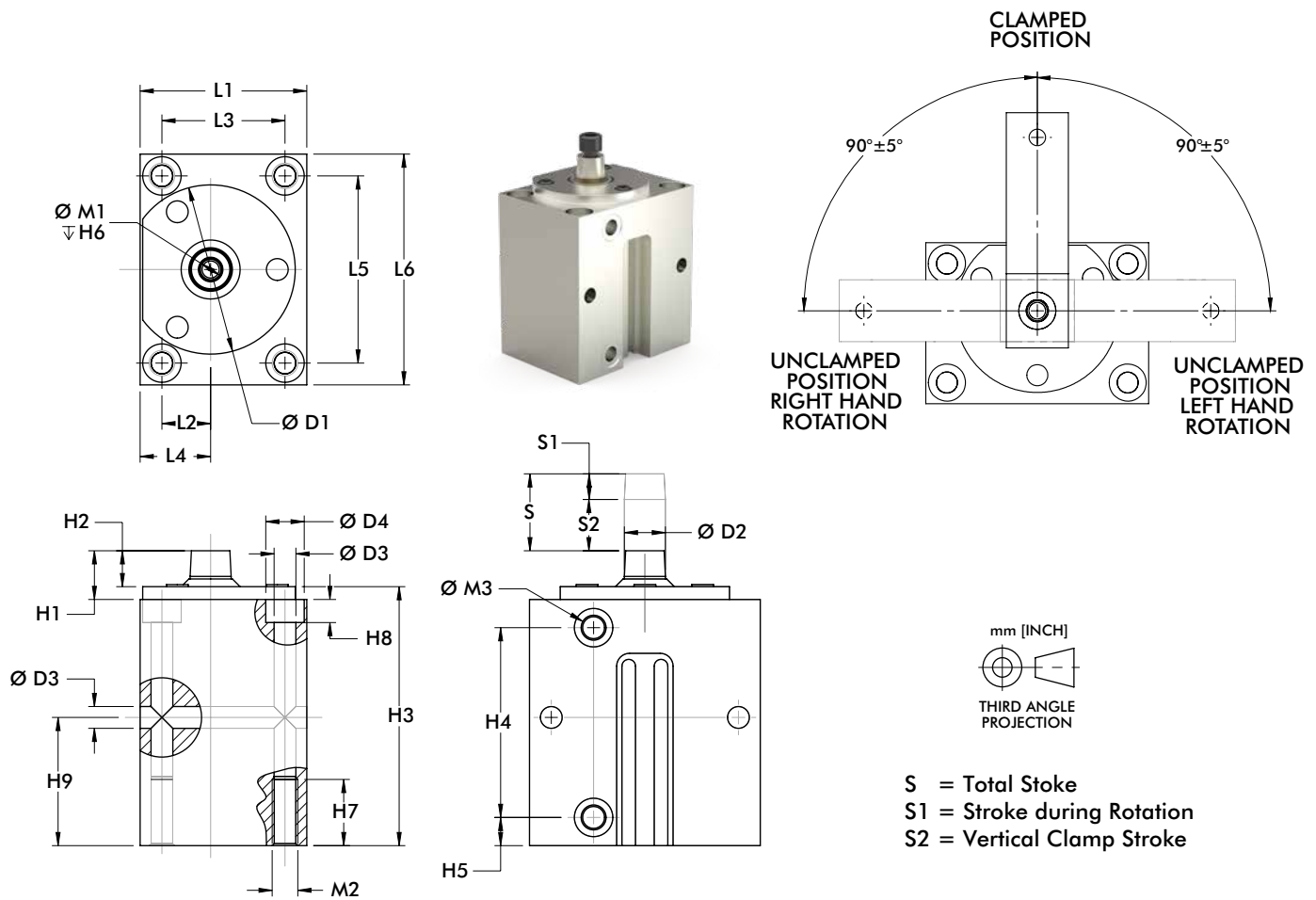
Maximum Operating Temperature: 80°C [176°F]

Note:

Switches are optional. To order clamp with (2) 8EA-109-1 switches, add **A** to the end of the model. EX. 89B30-010-2**RA**. See page MC-PSC-40 for additional switch options.

89B SERIES

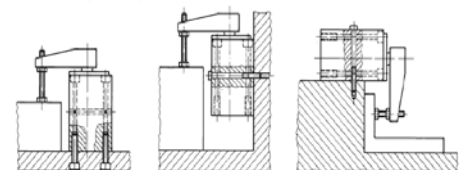
Pneumatic Swing Clamps | Dimensions



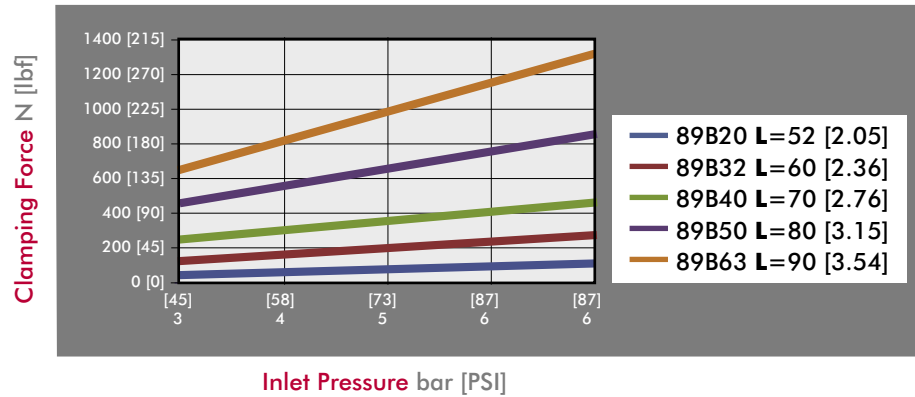
| Model | ØD1 | ØD2 | ØD3 | D4 | H1 | H2 | H3 | H4 | H5 | H6 | H7 | H8 | H9 | L1 |
|-------|--------------|--------------|---------------|--------------|----------------|--------------|----------------|---------------|--------------|--------------|--------------|--------------|--------------|--------------|
| 89B20 | [1.89] 48 | [0.39] 10 | [0.26] 6,6 | [0.43] 11 | [0.69] 17,5 | [0.35] 9 | [3.48] 88.5 | [2.28] 58 | [0.35] 9 | [0.59] 15 | [0.79] 20 | [0.28] 7 | [1.57] 40 | [1.77] 45 |
| 89B32 | [2.20] 56 | [0.47] 12 | [0.33] | [0.59] | [0.63] 16 | [0.43] 11 | [3.70] 94 | [2.72] 69 | [0.39] 10 | [0.67] 17 | [0.98] 25 | [0.35] 9 | [1.77] 45 | [2.17] 55 |
| 89B40 | [2.60] 66 | [0.63] 16 | 8,5 | 15 | [0.75] 19 | [0.55] 14 | [3.98] 101 | [2.91] 74 | | | | | [1.97] 50 | [2.56] 65 |
| 89B50 | [3.07] 78 | [0.71] 18 | [0.41] | [0.71] | [0.98] 25 | [0.67] 17 | [5.51] 140 | [4.29] 109 | [0.43] 11 | [0.98] 25 | [1.18] 30 | [0.43] 11 | [2.76] 70 | [2.95] 75 |
| 89B63 | [3.70] 94 | [0.79] 20 | 10,5 | 18 | [1.06] 27 | [0.75] 19 | [4.53] 115 | [3.35] 85 | | | | | [2.16] 55 | [3.54] 90 |

| Model | L2 | L3 | L4 | L5 | L6 | M1 | M2 | M3 |
|-------|----------------|--------------|----------------|---------------|---------------|-----|-----|-------|
| 89B20 | [0.45] 11,5 | [1.18] 30 | [0.75] 19 | [2.36] 60 | [2.95] 75 | M5 | M8 | M5 |
| 89B32 | [0.55] 14 | [1.50] 38 | [0.89] 22,5 | [2.68] 68 | [3.35] 85 | M6 | M10 | |
| 89B40 | [0.75] 19 | [1.89] 48 | [1.08] 27,5 | [2.87] 73 | [3.54] 90 | M8 | | G-1/8 |
| 89B50 | [0.94] 24 | [2.17] 55 | [1.34] 34 | [3.54] 90 | [4.33] 110 | | M12 | |
| 89B63 | [1.18] 30 | [2.76] 70 | [1.57] 40 | [3.94] 100 | [4.72] 120 | M10 | | G-1/4 |

Mounting Options



Series 89B Clamping Force
(w/ standard clamping arm)

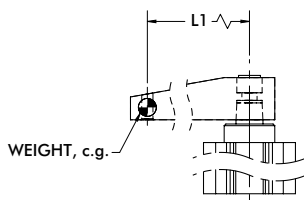


Guidelines

DESTACO Pneumatic Swing Clamps are designed for long life when using standard clamping arms and spindles. In the event that a longer arm or additional weight is needed, please consult these charts for the allowable weight and length.

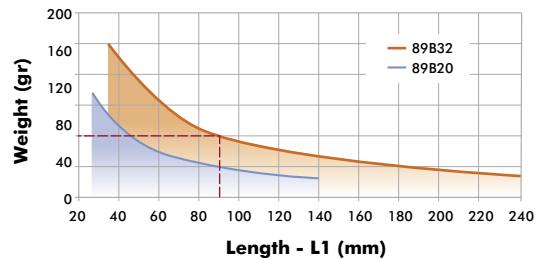
Example: 89B32

At a weight of 80 gr, the maximum length of the arm is approximately 90mm.

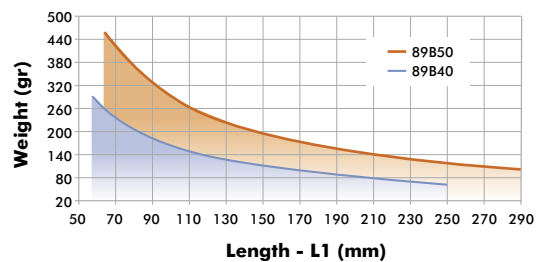


All data refers to an operating pressure of 5 bar [72psi] and an opening and closing time of 1 second.

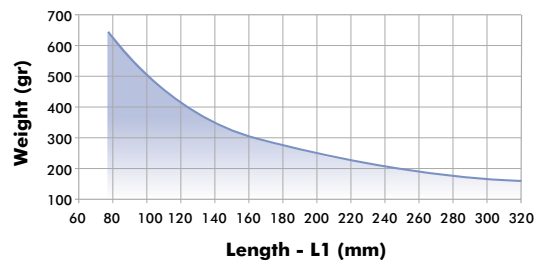
89B20 & 89B32 Clamp Arm Weight



89B40 & 89B50 Clamp Arm Weight



89B63 Clamp Arm Weight

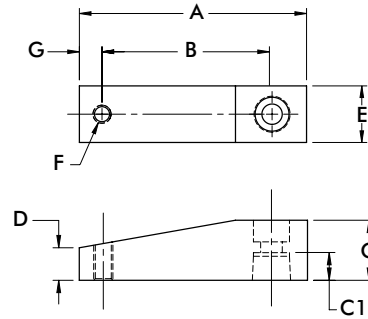


89B SERIES

Pneumatic Swing Clamps | Clamping Arm

Features:

- Lightweight aluminum construction
- Locking tapered connection for 360 deg. arm positioning

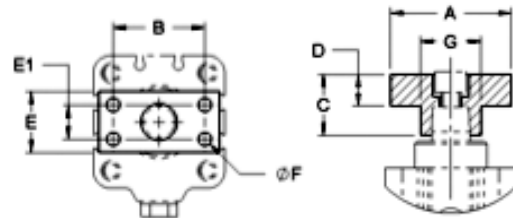
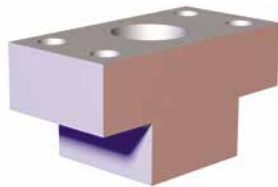


| Part Number | Used with Model | A | B | C | C1 | D | E | F | G | Weight [lbs] kg |
|-------------|-----------------|---------------|--------------|--------------|----------------|----------------|--------------|-----|--------------|-----------------|
| 8JG-215-1 | 89B20-010-2 | [2.64] 67 | [2.05] 52 | [0.59] 15 | [0.33] 8,5 | [0.33] 8,5 | [0.59] 15 | M6 | [0.28] 7 | [0.08] 0,04 |
| 8JG-217-1 | 89B32-010-2 | [3.15] 80 | [2.36] 60 | [0.79] 20 | [0.37] 9,5 | | [0.79] 20 | M8 | [0.39] 10 | [0.14] 0,06 |
| 8JG-218-1 | 89B40-010-2 | [3.74] 95 | [2.76] 70 | [0.98] 25 | [0.45] 11,5 | [0.55] 14 | [0.98] 25 | | | [0.28] 0,13 |
| 8JG-219-1 | 89B50-025-2 | [4.17] 106 | [3.15] 80 | [1.18] 30 | [0.59] 15 | [0.57] 14,5 | [1.18] 30 | M10 | [0.47] 12 | [0.42] 0,19 |
| 8JG-220-1 | 89B63-008-2 | [4.72] 120 | [3.54] 90 | [1.38] 35 | [0.67] 17 | [0.67] 17 | [1.38] 35 | | | [0.66] 0,30 |

Clamping Arm Adapters

Features:

- For attaching custom made clamp arms
- 360° rotatable arm
- Aluminum construction



| Part Number | Used with Model | A | B | C | D | E | E1 | F | Weight [lbs] kg |
|-------------|-----------------|--------------|--------------|--------------|--------------|--------------|--------------|--------------------|-----------------|
| 8MA-084-1 | 89B20-010-2 | [1.57] 40 | [1.10] 28 | [0.59] 15 | [0.32] 8 | [0.59] 15 | -- | [0.22] 5,5 (2x) | [0.03] 0,014 |
| 8MA-086-1 | 89B32-010-2 | [1.97] 50 | [1.38] 35 | [0.79] 20 | [0.43] 11 | [0.79] 20 | | | [0.08] 0,035 |
| 8MA-087-1 | 89B40-010-2 | | [1.50] 38 | [0.98] 25 | [0.51] 13 | [0.98] 25 | [0.55] 14 | [0.22] 5,5 (4x) | [0.11] 0,050 |
| 8MA-088-1 | 89B50-025-2 | [2.36] 60 | [1.77] 45 | [1.18] 30 | [0.59] 15 | [1.18] 30 | [0.59] 15 | [0.28] 7 (4x) | [0.19] 0,085 |
| 8MA-089-1 | 89B63-008-2 | [2.56] 65 | [1.89] 48 | [1.38] 35 | [0.67] 17 | [1.38] 35 | [0.71] 18 | [0.35] 9 (4x) | [0.28] 0,125 |

