

# 6001 SERIES

## Straight Line Action Clamps | Product Overview

### Features:

- Heavier duty version of Model 601 with 50% more holding capacity
- Mounting pattern interchangeable with Model 601
- Allow handle to fall below mounting plane to lock in retracted position

### Applications:

- Assembly
- Testing
- Soldering
- Gluing

### Also Available:

See page MC-ACC-1 for accessories

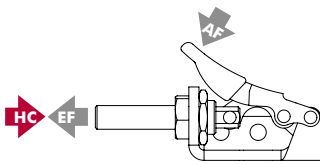
6001  
6001-M



6001-SS  
6001-MSS

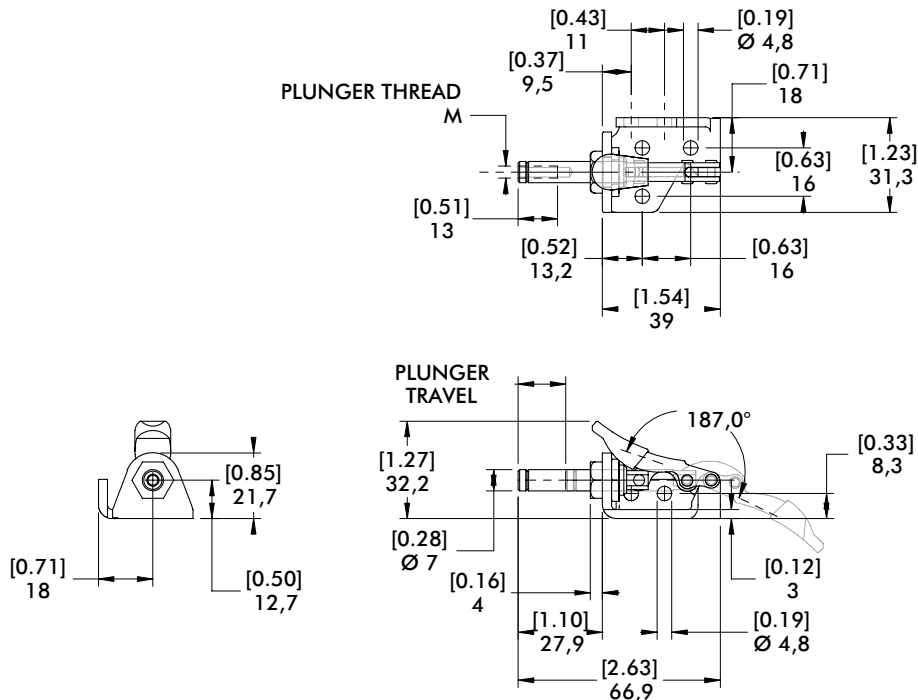


## Technical Information | Holding Capacities | Dimensions



Model	Max. Holding Capacity	Weight	EF:AF (pushing/pulling)	Plunger Travel	(M) Plunger Thread	Spindle (Recommended)	Spindle Included
6001					#8-32	105203	No
6001-M	[150 lbf] 670 N	[0.12lb] 0,05kg	14:1/25:1	[0.63] 16	M4	205208-M	
6001-SS					#8-32	205943	Yes
6001-MSS					M4	205943-M	

HC = Holding Capacity, EF = Exerting Force, AF = Applied Force



# 601 SERIES

## Straight Line Action Clamps | Product Overview

### Features:

- Compact straight line action clamp

### Applications:

- Assembly
- Testing
- Soldering
- Gluing

### Also Available:

See page MC-ACC-1 for accessories

601



601-M



601-O  
Straight Base  
U-Bar



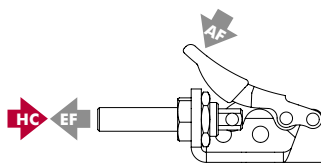
601-SS  
Stainless steel



601-OSS ⓘ  
Stainless steel  
External  
thread

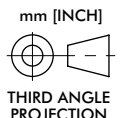
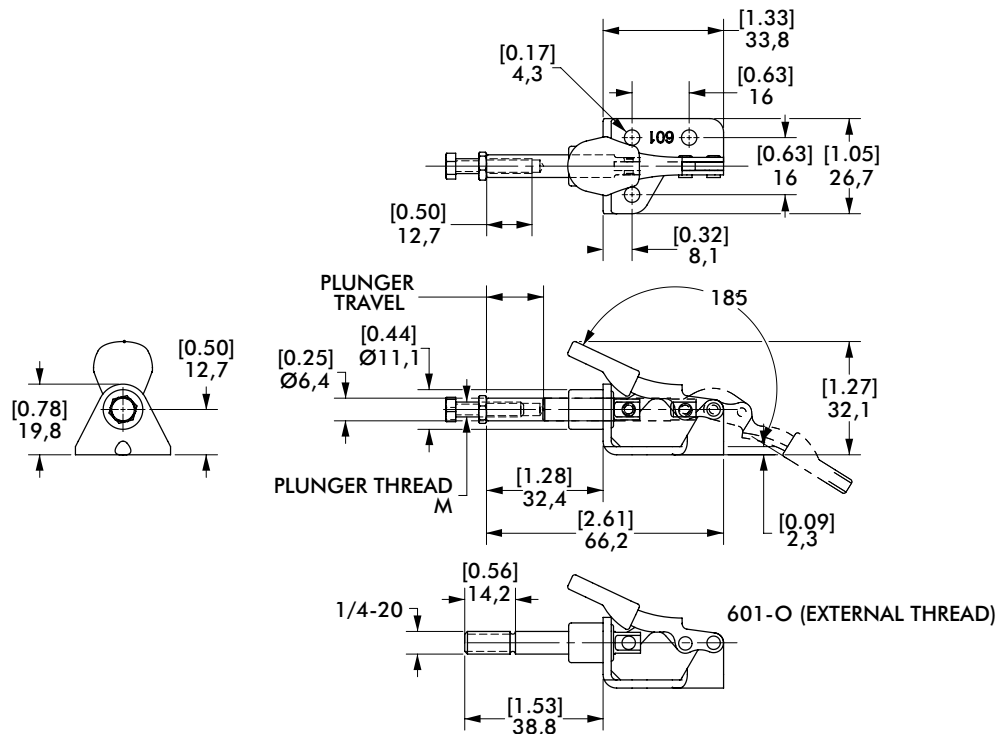


## Technical Information | Holding Capacities | Dimensions



Model	Max. Holding Capacity	Weight	EF:AF (pushing/pulling)	Plunger Travel (M)	Plunger Thread (M)	Spindle (Recommended)	Spindle Included
601					#8-32	105203	Yes
601-M					M4	205208-M	No
601-O	[100 lbf] 440 N	[0.09lb] 0,04kg	14:1/25:1	[0.63] 16	1/4-20	--	No
601-SS					#8-32	205943	Yes
601-OSS ⓘ					1/4-20	--	No

ⓘ This item is available upon request HC = Holding Capacity, EF = Exerting Force, AF = Applied Force



# 6015 SERIES

## Straight Line Action Clamps | Product Overview

### Features:

- Smallest of the solid base Straight Line Action clamps
- Compact design combined with high holding capacity
- Allow handle to fall below mounting plane to lock in retracted position

### Applications:

- Assembly
- Checking fixtures
- Tensioning devices

### Also Available:

See page MC-ACC-1 for accessories

Covered under one or more U.S./International Patents

6015  
6015-M



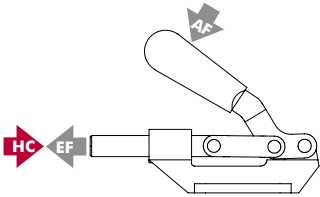
6015-SS,  
6015-MSS  
Stainless  
Steel



6015-R,  
6015-MR  
with DESTACO®  
Toggle Lock  
Plus™



## Technical Information | Holding Capacities



Model	Max. Holding Capacity	Weight	EF:AF (pushing/pulling)	Plunger Travel	(M) Plunger Thread	Recommended Spindle (Not Supplied)
6015	[560 lbf] 2500 N				1/4-20	205203
6015-M					M6	205203-M
6015-SS	[630 lbf] 2800 N	[0.35lb] 0,15kg	35:1	[0.70] 17,8	1/4-20	202943 (supplied)
6015-MSS	M6				202916-M (supplied)	
6015-R	[560 lbf] 2500 N				1/4-20	205203
6015-MR					M6	205203-M

HC = Holding Capacity, EF = Exerting Force, AF = Applied Force

# 6015 SERIES

## Straight Line Action Clamps | Dimensions | -M/-SS/-MSS/-R/-MR

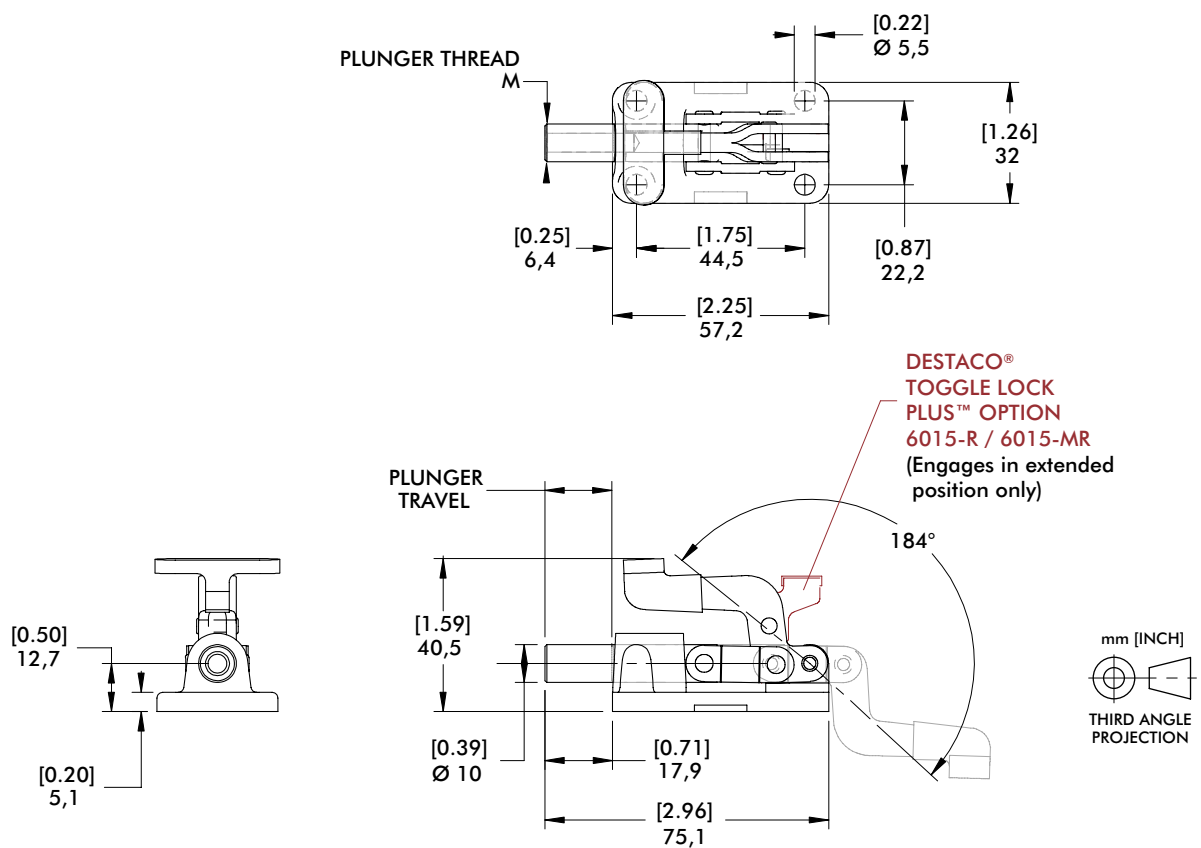
6015  
6015-M



6015-SS,  
6015-MSS  
Stainless  
Steel



6015-R,  
6015-MR  
with DESTACO®  
Toggle Lock Plus™



# 603, 608 SERIES

## Straight Line Action Clamps | Product Overview

### Features:

- Allow handle to rotate and fall below mounting plane to lock in retracted position
- Large holding capacities for their size
- Available with DESTACO® Toggle Lock Plus™

### Applications:

- Assembly & test
- Checking fixtures
- Welding fixtures
- Tensioning devices

### Also Available:

See page MC-ACC-1 for accessories

803 Pneumatic Toggle Clamp  
See page MC-PTC-23

803-ME Pneumatic Toggle Clamp  
See page MC-PTC-23

Covered under one or more U.S./International Patents

603  
603-M



603-SS  
603-MSS  
Stainless  
Steel



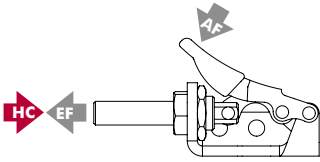
603-R  
603-MR  
with  
DESTACO®  
Toggle Lock  
Plus™



608  
608-M



## Technical Information | Holding Capacities



Model	Max. Holding Capacity	Weight	EF:AF (pushing/pulling)	Plunger Travel	(M) Plunger Thread	Recommended Spindle (Not Supplied)
603	[600 lbf] 2670 N				5/16-18	207203
603-M					M8	207203-M
603-SS	[840 lbf] 3740 N	[0.83lb] 0,38kg	23:1/34:1	[1.25] 31,8	5/16-18	207943
603-MSS					M8	207943-M (supplied)
603-R	[600 lbf] 2670 N				5/16-18	207203
603-MR					M8	207203-M
608	[850 lbf] 3780 N	[1.25lb] 0,57kg	44:1/50:1	[1.63] 41,3	3/8-16	210203
608-M					M10	210203-M

HC = Holding Capacity, EF = Exerting Force, AF = Applied Force

# 603, 608 SERIES

Straight Line Action Clamps | Dimensions | -M/-SS/-MSS/-R/-MR

603  
603-M



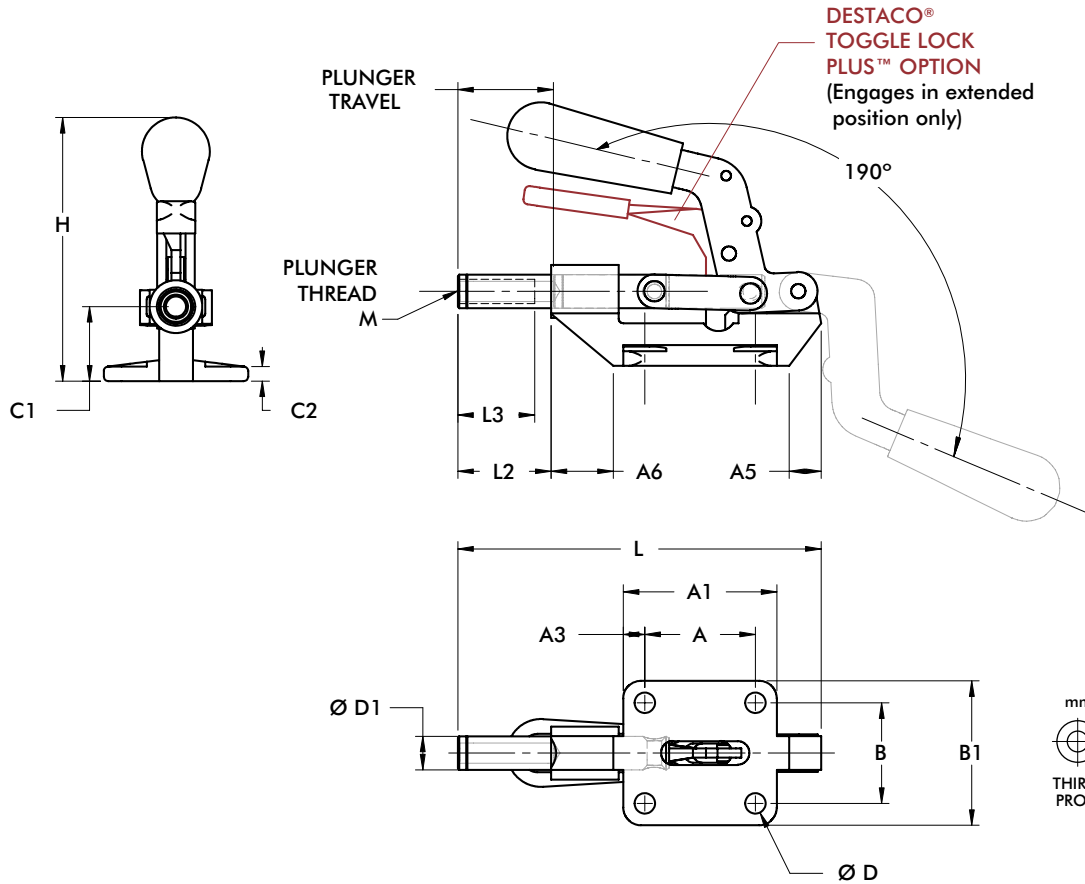
603-SS  
603-MSS  
Stainless Steel



603-R  
603-MR  
with  
DESTACO®  
Toggle Lock  
Plus™



608  
608-M



Model	A	A1	A3	A5	A6	B	B1	C1	C2	D	D1	H	L	L2	L3
603		[2.17]	[0.34]	[0.51]	[0.82]				[0.19]		[0.44]	[3.43]	[4.77]		
603-M		55	8,5	13	21				4,8		11,1	87	121,2		
603-SS	[1.44]			[0.54]	[0.65]	[1.31]	[1.88]	[0.97]	[0.25]	[0.27]	[0.47]	[3.28]	[4.69]	[1.28]	[1.00]
603-MSS	36,6			13,6	16,5	33,3	48	24,6	6,4	6,8	12	83,4	119,2	32,5	25,4
603-R		[2.20]	[0.30]	[0.51]	[0.82]						[0.44]	[3.43]	[4.77]		
603-MR		55,9	7,5	13	21						11,1	87	121,2		
608	[1.63]	[2.25]	[0.31]	[0.75]	[1.40]	[1.63]	[2.25]	[1.25]	[0.19]						
608-M	41,4	57,2	8	19	36	41,4	57,2	31,8	4,8	[0.33]	[0.62]	[4.04]	[6.00]	[1.59]	[1.25]
										8,4	15,8	102,6	152,3	40,5	31,8

# 605 SERIES

## Straight Line Action Clamps | Product Overview

### Features:

- For push/pull clamping
- Allow handle to rotate and fall below mounting plane to lock in retracted position

### Applications:

- Assembly & test
- Woodworking
- Tensioning devices

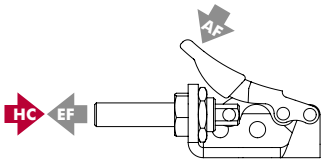
### Also Available:

See page MC-ACC-1 for accessories  
Reverse action version Model 615/615-M

605  
605-M

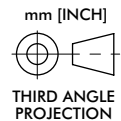
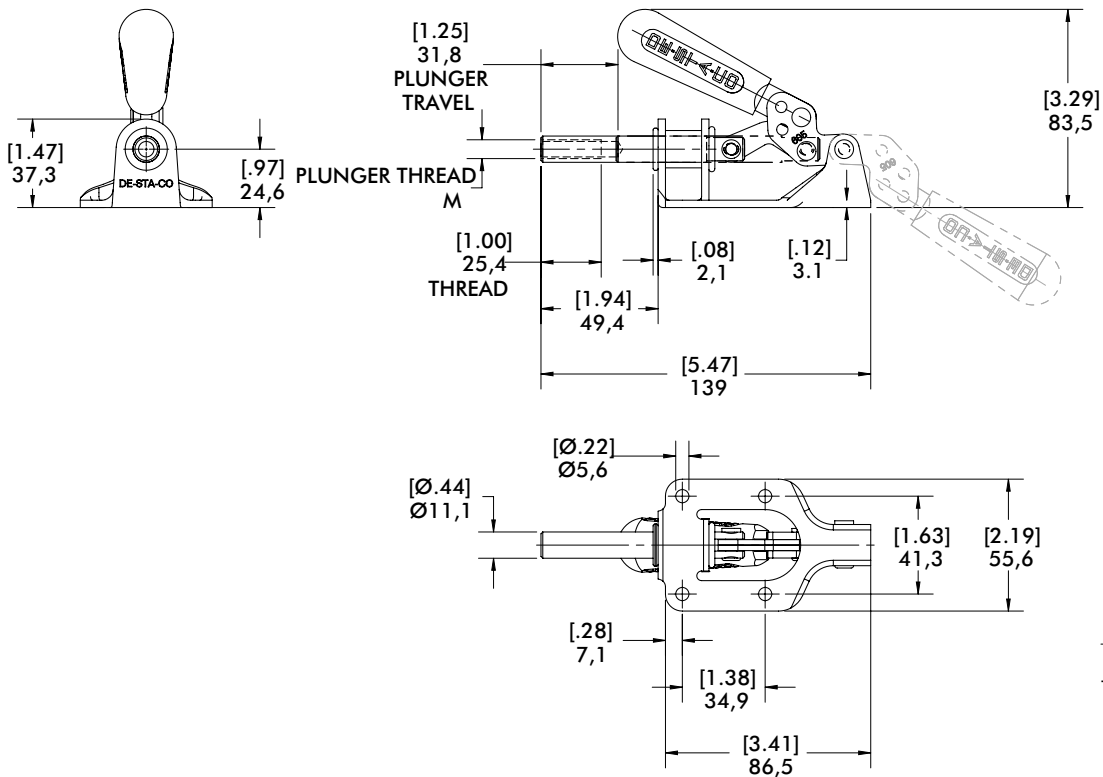


## Technical Information | Holding Capacities | Dimensions



Model	Max. Holding Capacity	Weight	EF:AF (pushing/pulling)	Plunger Travel	(M) Plunger Thread	Recommended Spindle (Not Supplied)
605	[300 lbf] 1330 N	[0.69lb] 0,31kg	45:1/40:1	[1.25] 31,8	5/16-18	207203
605-M					M8	207203-M

HC = Holding Capacity, EF = Exerting Force, AF = Applied Force



### Features:

- Handle and linkage swivel 125° for mounting flexibility
- Narrow base for tight spaces
- Plunger locks in extended position only

### Applications:

- Assembly & test
- Woodworking
- Tensioning devices

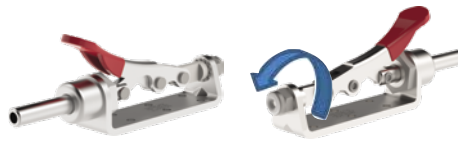
### Also Available:

See page MC-ACC-1 for accessories

606  
606-M



Mounting configuration:

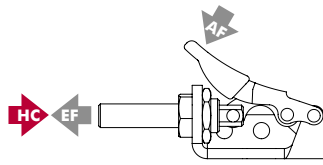


Bottom Mount



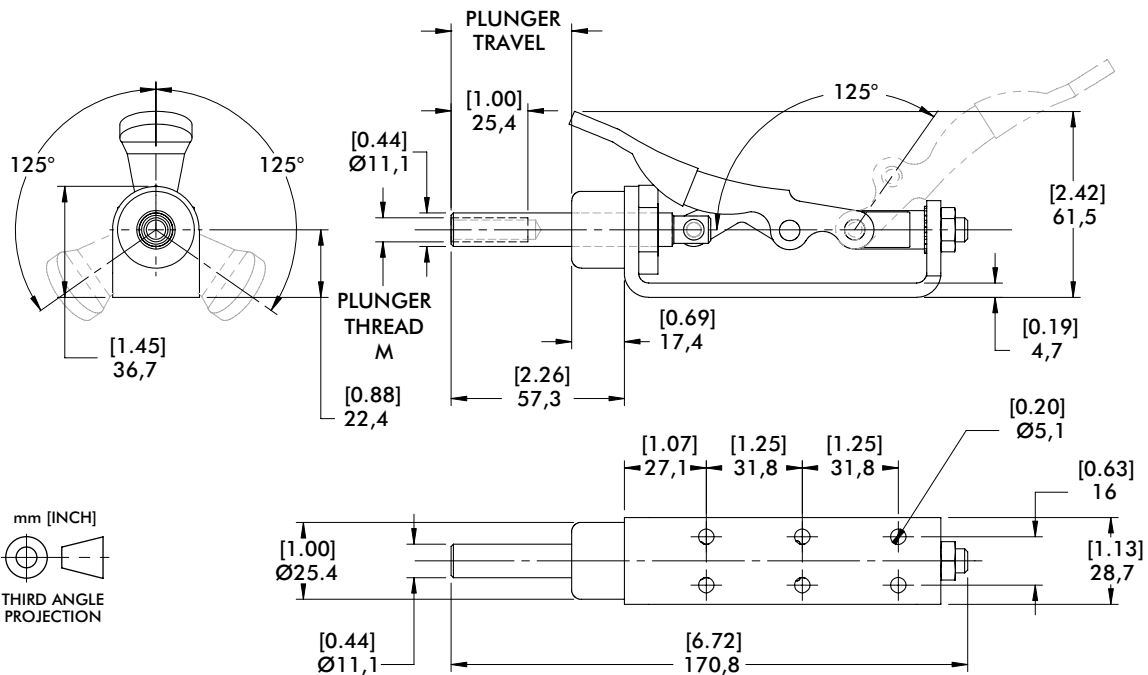
Side Mount

## Technical Information | Holding Capacities | Dimensions



Model	Max. Holding Capacity	Weight	EF:AF (pushing)	Plunger Travel	(M) Plunger Thread	Recommended Spindle (Not Supplied)
606	[450 lbf] 2000 N	[0.81 lb] 0,37kg	33:1	40 [1.57]	5/16-18 M8	207203
606-M						207203-M

HC = Holding Capacity, EF = Exerting Force, AF = Applied Force





# 607 SERIES

## Straight Line Action Clamps | Product Overview

### Features:

- Low profile and high holding capacity for its size
- Available with round or square plunger to resist torsional loads
- Allow handle to rotate and fall below mounting plane to lock in retracted position

### Applications:

- Assembly & test
- Welding
- Tensioning devices

### Also Available:

See page MC-ACC-1 for accessories

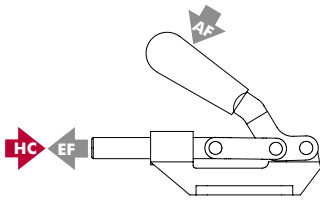
607  
607-M



607-SQ  
607-SQM  
with Square  
Plunger

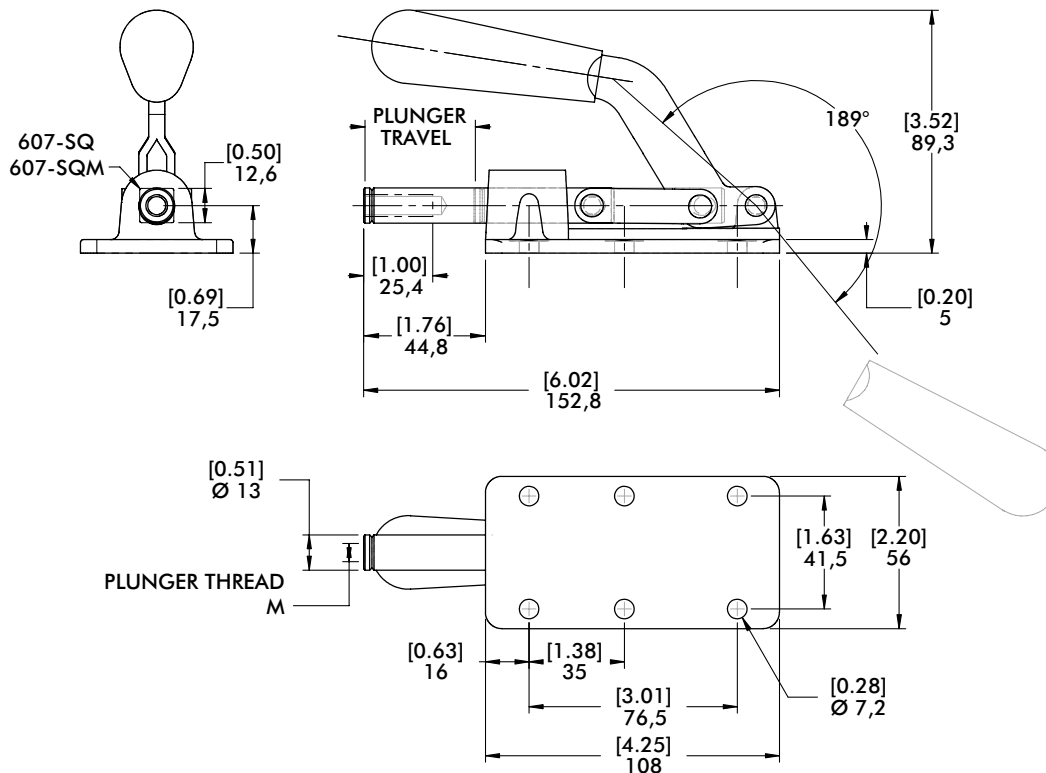


## Technical Information | Holding Capacities | Dimensions



Model	Max. Holding Capacity	Weight	EF:AF (pushing/pulling)	Plunger Travel	(M) Plunger Thread	Recommended Spindle (Not Supplied)
607					5/16-18	207203
607-M	[800 lbf] 3560 N	[1.63lb] 0,74kg	37:1/64:1	[1.63] 41,4	M8	207203-M
607-SQ					5/16-18	207203
607-SQM					M8	207203-M

HC = Holding Capacity, EF = Exerting Force, AF = Applied Force



### Features:

- Low profile and high holding capacity for its size
- Flanged or straight base
- Allow handle to rotate and fall below mounting plane to lock in retracted position

### Applications:

- Assembly & test
- Welding
- Tensioning devices

### Also Available:

See page MC-ACC-1 for accessories

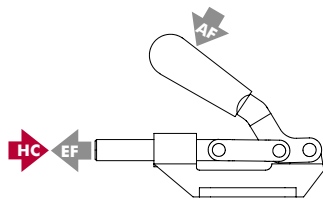
**609**  
Flanged Base



**609-B**  
Straight Base

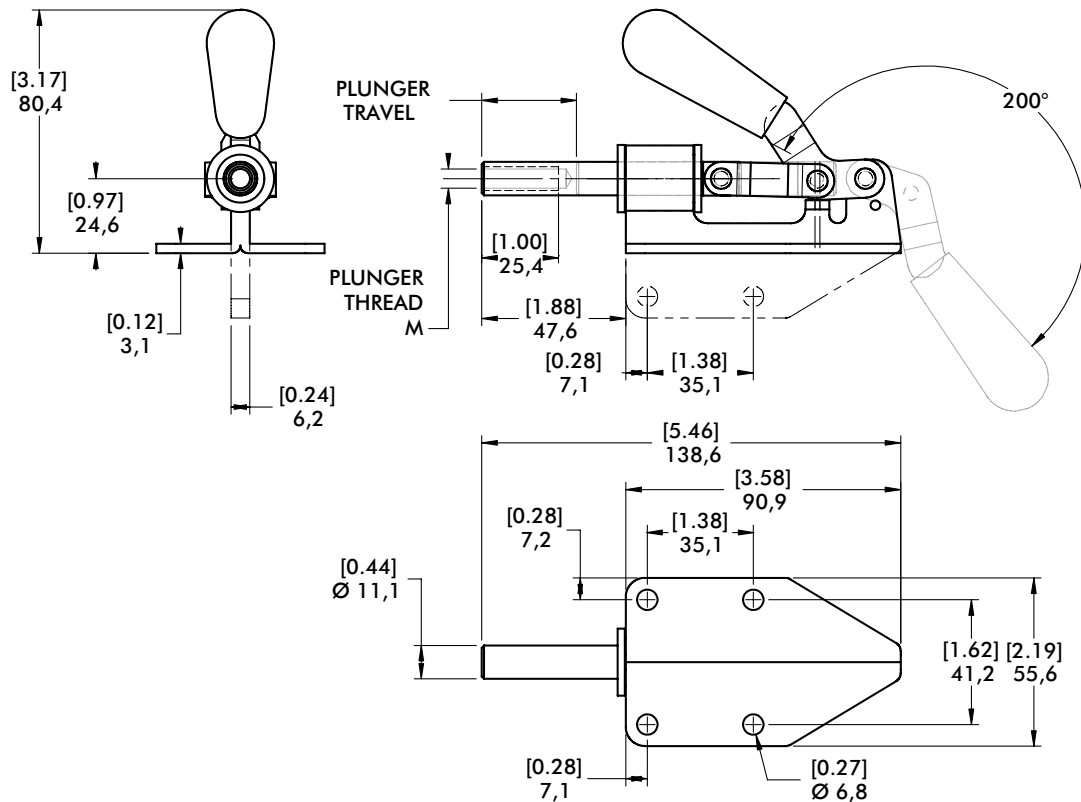


## Technical Information | Holding Capacities | Dimensions



Model	Max. Holding Capacity	Weight	EF:AF (pushing/pulling)	Plunger Travel	(M) Plunger Thread	Recommended Spindle (Not Supplied)
609	[300 lbf] 1330 N	[0.88lb] 0,40kg	36:1/47:1	[1.25] 31,8	5/16-18	207203
609-B						

HC = Holding Capacity, EF = Exerting Force, AF = Applied Force



# 610 SERIES

## Straight Line Action Clamps | Product Overview

### Features:

- For push/pull clamping
- Allow handle to rotate and fall below mounting plane to lock in retracted position

### Applications:

- Assembly & test
- Woodworking
- Tensioning devices

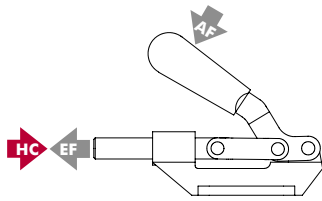
### Also Available:

See page MC-ACC-1 for accessories

610  
610-M

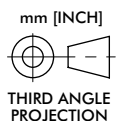
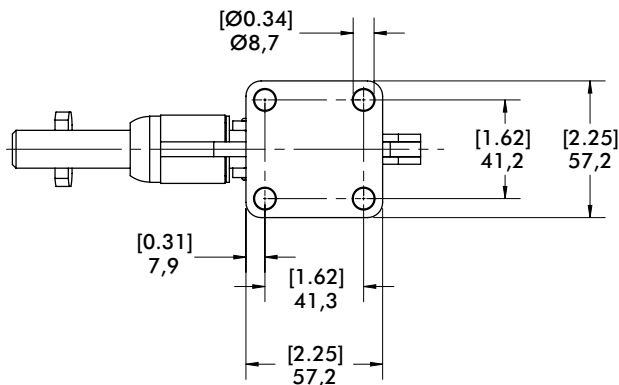
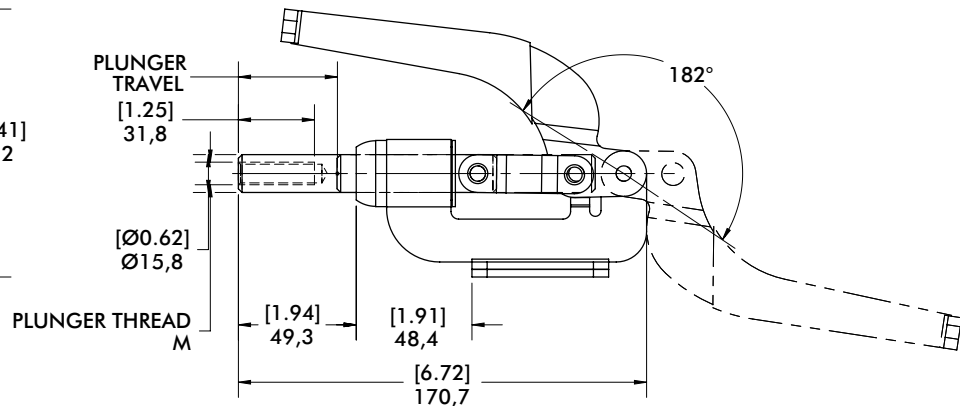
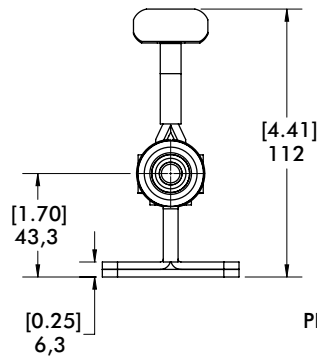


## Technical Information | Holding Capacities | Dimensions



Model	Max. Holding Capacity	Weight	EF:AF (pushing/pulling)	Plunger Travel	(M) Plunger Thread	Recommended Spindle (Not Supplied)
610	[800 lbf]	[1.69lb]	51:1/70:1	[1.63]	3/8-16	210203
610-M	3560 N	0,77kg		41,4	M10	210203-M

HC = Holding Capacity, EF = Exerting Force, AF = Applied Force



### Features:

- Reverse handle action.
- Plunger locks in the extended position only as the handle is moved downward

### Applications:

- Assembly & test
- Woodworking
- Tensioning devices

### Also Available:

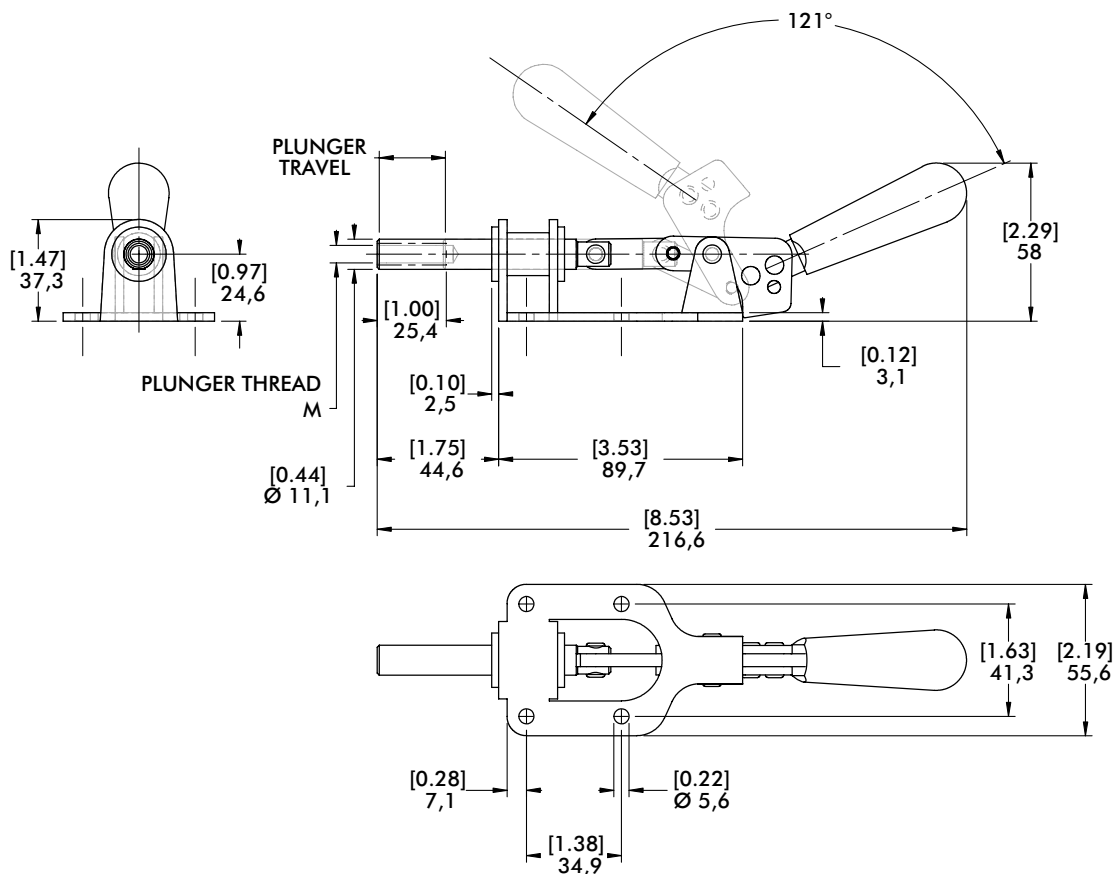
See page MC-ACC-1 for accessories

615



## Technical Information | Holding Capacities | Dimensions

Model	Max. Holding Capacity	Weight	Plunger Travel (M)	Plunger Thread	Recommended Spindle (Not Supplied)
615	[300 lbf] 1330 N	[0.69lb] 0,31kg	[1.00] 25,4	5/16-18	207203



# 620 SERIES

## Straight Line Action Clamps | Product Overview

### Features:

- Reverse handle action
- Plunger locks in the extended position only as the handle is moved downward

### Applications:

- Assembly & test
- Woodworking
- Tensioning devices

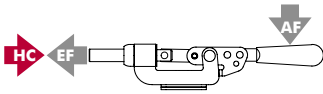
### Also Available:

See page MC-ACC-1 for accessories

620  
620-M

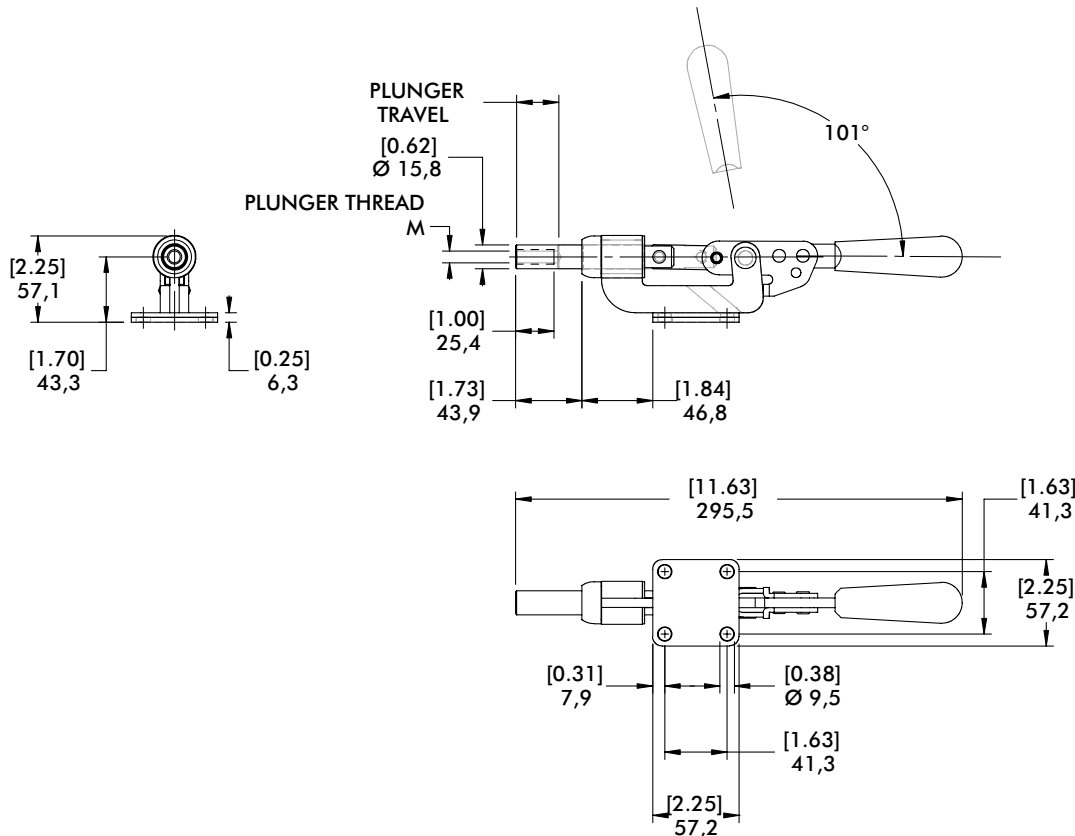


## Technical Information | Holding Capacities | Dimensions



Model	Max. Holding Capacity	Weight	EF:AF (pushing/pulling)	Plunger Travel	(M) Plunger Thread	Recommended Spindle (Not Supplied)
620	[600 lbf] 2670 N	[1.50lb] 0,68kg	44:1	[1.11] 28,2	3/8-16	210203
620-M					M10	210203-M

HC = Holding Capacity, EF = Exerting Force, AF = Applied Force



### Features:

- For push/pull clamping
- Allow handle to rotate and fall below mounting plane to lock in retracted position
- Available with DESTACO® Toggle Lock Plus™

### Applications:

- Assembly & test
- Welding
- Tensioning devices

### Also Available:

See page MC-ACC-1 for accessories  
830, 830-ME Pneumatic Toggle Clamp  
(See page MC-PTC-25)

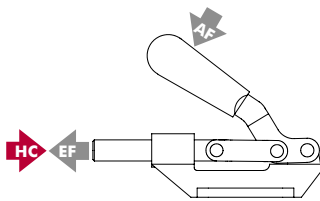
630  
630-M



630-R  
630-MR  
with  
DESTACO®  
Toggle Lock  
Plus™

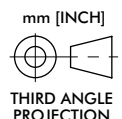
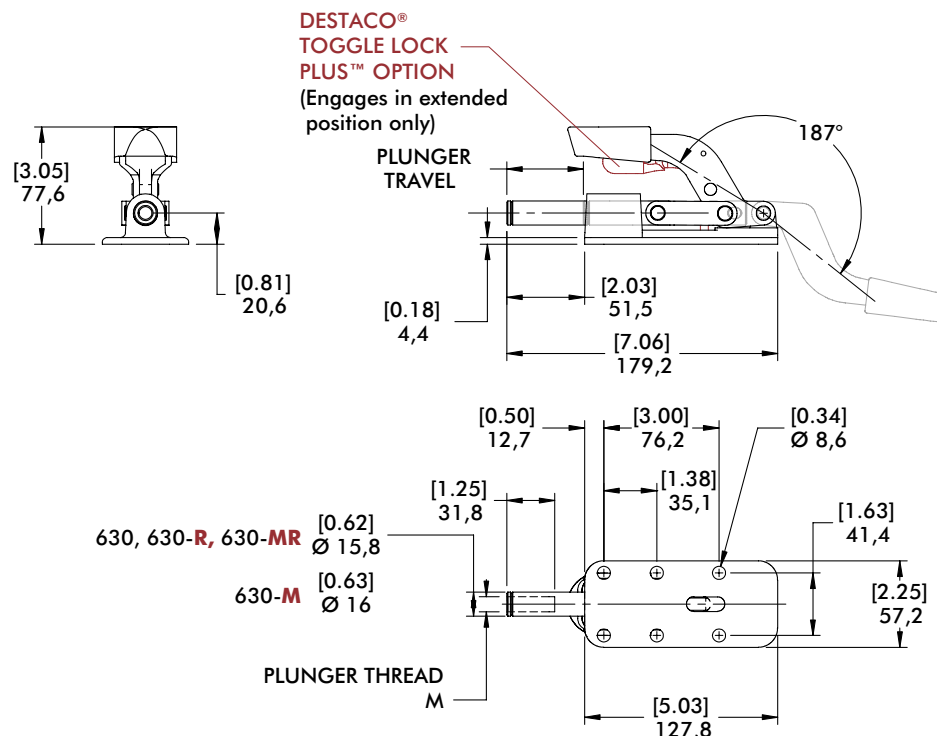


## Technical Information | Holding Capacities | Dimensions



Model	Max. Holding Capacity	Weight	EF:AF (pushing/pulling)	Plunger Travel	(M) Plunger Thread	Recommended Spindle (Not Supplied)
630					3/8-16	210203
630-M	[2,500 lbf] 11100 N	[1.90lb] 0,89kg	36:1/23:1	[2.00] 50,8	M10	210203-M
630-R					3/8-16	210203
630-MR					M10	210203-M

HC = Holding Capacity, EF = Exerting Force, AF = Applied Force



# 640 SERIES

## Straight Line Action Clamps | Product Overview

### Features:

- For heavy duty push/pull clamping
- Longest stroke of our Straight Line Action Clamps
- Allow handle to rotate and fall below mounting plane to lock in retracted position
- Available with DESTACO® Toggle Lock Plus™

### Applications:

- Assembly & test
- Welding
- Tensioning devices

### Also Available:

See page MC-ACC-1 for accessories

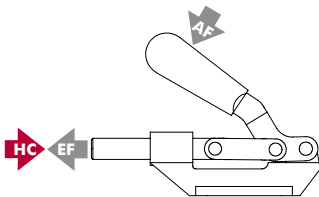
640  
640-M



640-R  
640-MR  
with  
DESTACO®  
Toggle Lock  
Plus™

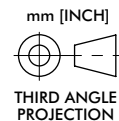
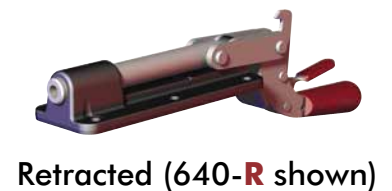
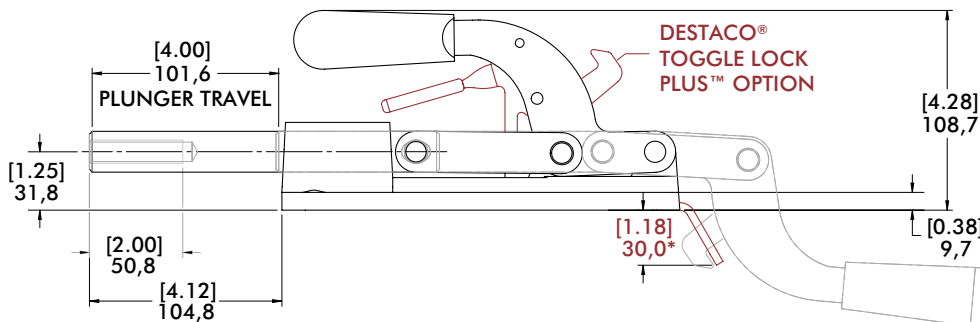
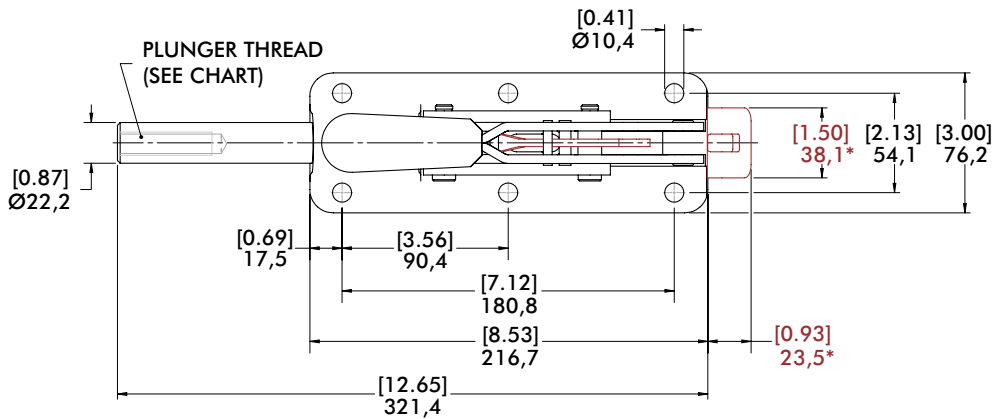


## Technical Information | Holding Capacities | Dimensions



Model	Max. Holding Capacity	Weight	EF:AF (pushing)	Plunger Travel	(M) Plunger Thread	Recommended Spindle (Not Supplied)
640					1/2-13	220203
640-M	[7,500 lbf] 33400 N	[6.78lb] 3,08kg	35:1	[4.00] 101,6	M12	220203-M
640-R					1/2-13	220203
640-MR					M12	220203-M

HC = Holding Capacity, EF = Exerting Force, AF = Applied Force



(\* Dimensions above in RED applies to the 640-R/640-MR only

### Features:

- For heavy duty push/pull clamping
- Largest of our Straight Line Action Clamps
- Forged steel base and handle
- Allow handle to rotate and fall below mounting plane to lock in retracted position

### Applications:

- Assembly
- Welding
- Staking, light presswork
- Tensioning devices

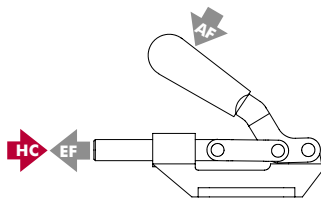
### Also Available:

See page MC-ACC-1 for accessories

650  
650-M

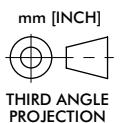
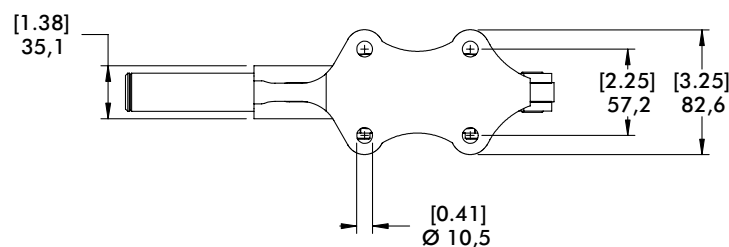
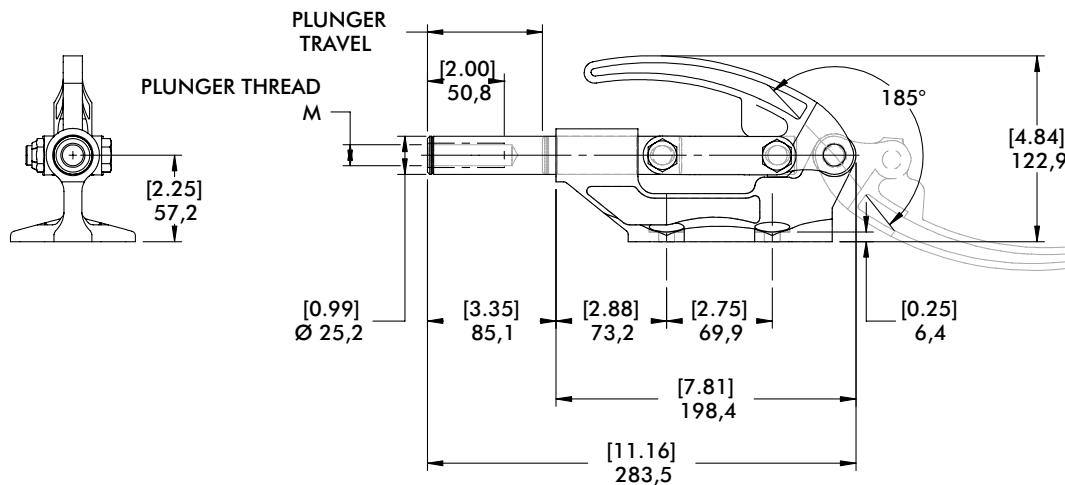


## Technical Information | Holding Capacities | Dimensions



Model	Max. Holding Capacity	Weight	EF:AF (pushing)	Plunger Travel	(M) Plunger Thread	Recommended Spindle (Not Supplied)
650	[16,000 lbf] 71200 N	[5.69lb] 2,58kg	25:1	[3.00] 76,6	5/8-11	250203
650-M					M16	250203-M

HC = Holding Capacity, EF = Exerting Force, AF = Applied Force





# 95030, 95040, 95050, 95060 SERIES

## Straight Line Action Clamps | Product Overview

### Features:

- Low profile with high holding capacities
- Cast steel base and handle
- Allow handle to rotate and fall below mounting plane to lock in retracted position

### Applications:

- Assembly
- Testing
- Tensioning devices

### Also Available:

See page MC-ACC-1 for accessories

95030

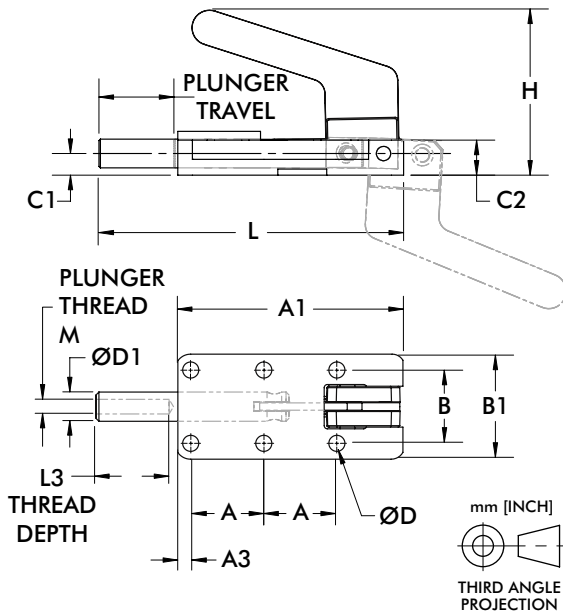
95040

95050 ⓘ

95060 ⓘ



## Technical Information | Holding Capacities



Model	Max. Holding Capacity	Weight	Plunger Travel	(M) Plunger Thread	Recommended Spindle (Not Supplied)
95030	[550 lbf] 2450 N	[0.80lb] 2,58kg	[0.98] 24,9	M6	205203-M
95040	[1100 lbf] 4900 N	[1.60lb] 0,73kg	[1.50] 38,1	M8	207203-M
95050 ⓘ	[1650 lbf] 7340 N	[2.10lb] 0,95kg	[1.97] 50	M12	220203-M
95060 ⓘ	[3960 lbf] 17600 N	[6.4lb] 2,9kg	[2.36] 60		

ⓘ This item is available upon request

HC = Holding Capacity, EF = Exerting Force, AF = Applied Force

Part No.	A	A1	A3	B	B1	C1	C2	ØD	ØD1	H	L	L3*
95030	25 [0.98]	77 [3.03]	4.4 [0.17]	25 [0.98]	35.9 [1.41]	7.5 [0.30]	12.2 [0.48]	5.5 [0.22]	10 [0.39]	56 [2.20]	105 [4.13]	25 [0.98]
95040	35 [1.38]	109 [4.29]	7.9 [0.31]	35 [1.38]	50.7 [2.00]	10 [0.39]	18.3 [0.72]	6.5 [0.26]	14 [0.55]	77 [3.03]	149.1 [5.87]	35 [1.38]
95050 ⓘ	45 [1.77]	138.5 [5.45]	8.7 [0.34]	45 [1.77]	66 [2.60]	14 [0.55]	23.8 [0.94]	8.5 [0.33]	19 [0.75]	78 [3.07]	189.8 [7.47]	55 [2.17]
95060 ⓘ	55 [2.17]	167 [6.57]	10.2 [0.40]	55 [2.17]	77 [3.03]	16 [0.63]	27.4 [1.08]	10.5 [0.41]	22 [0.87]	92 [3.62]	229 [9.02]	65 [2.56]

ⓘ This item is available upon request

\*Minimum



# 5130, 5131, 5133 SERIES

## Heavy-Duty Straight Line Action Clamps | Product Overview

### Features:

- Reverse action allows the handle to stay out of the work zone
- Hardened steel pivot pins and bushings provide long life
- Black oxide finish with hardened plungers
- DESTACO® Toggle Lock Plus™ versions available

### Applications:

- Welding fixtures
- Assembly fixtures
- Light machining

5130/-M  
5131/-M  
5133/-M  
Flanged Base



5130-B/-MB  
5131-B/-MB  
5133-B/-MB  
Solid Base



5130-R/-MR  
5131-R/-MR  
5133-R/-MR  
Flanged Base  
with DESTACO®  
Toggle Lock Plus™



5130-BR①/-MBR①  
5131-BR①/-MBR①  
5133-BR①/-MBR①  
Solid Base  
with DESTACO®  
Toggle Lock Plus™



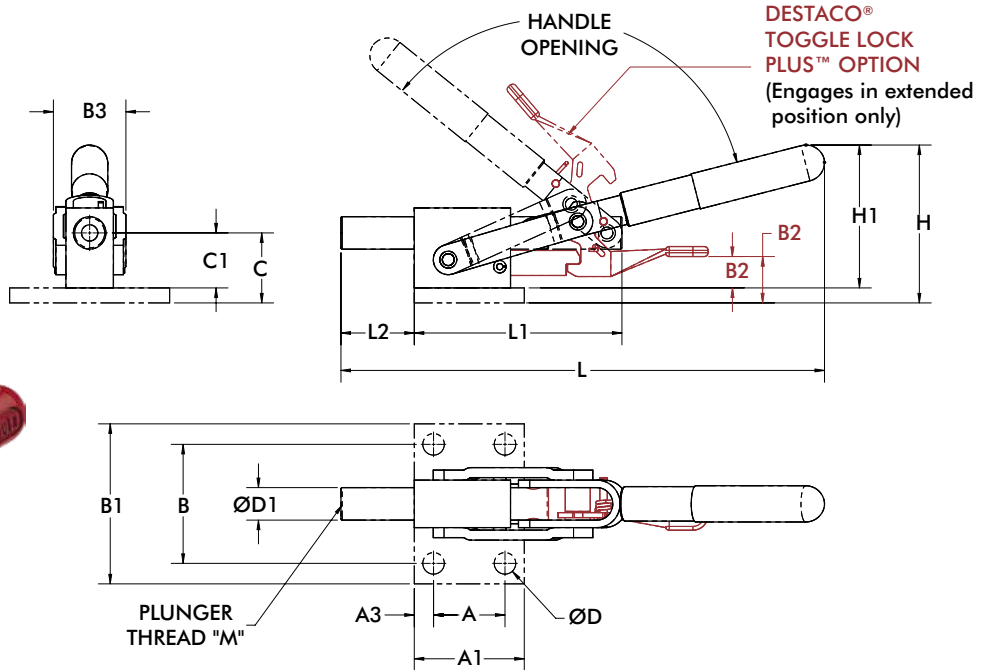
Model	Max. Holding Capacity	Weight	Plunger Travel mm[in.]	Handle Opening	Plunger Thread (M)	Recommended Spindle (not supplied)
5131	[2500lbf.] 11120N	[1.12lbs] 0,51kg	[1.00] 25,4	113°	5/16-18	461203
5131-M					M8	461203-M
5131-B		[0.85lbs] 0,39kg			5/16-18	461203
5131-MB					M8	461203-M
5131-R		[1.15lbs] 0,52kg			5/16-18	461203
5131-MR					M8	461203-M
5131-BR①		[0.88lbs] 0,40kg			5/16-18	461203
5131-MBR①		M8	461203-M			
5130	[5800lbf.] 25800N	[2.87lbs] 1,30kg	[1.75] 44,5	125°	1/2-13	325203
5130-M					M12	220203-M
5130-B		[2.40lbs] 1,09kg			1/2-13	325203
5130-MB					M12	220203-M
5130-R		[3.03lbs] 1,37kg			1/2-13	325203
5130-MR					M12	220203-M
5130-BR①		[2.56lbs] 1,16kg			1/2-13	325203
5130-MBR①		M12	220203-M			
5133	[4600lbf.] 20460N	[3.12lbs] 1,41kg	[3.13] 79,5	139°	1/2-13	325203
5133-M					M12	220203-M
5133-B		[2.65lbs] 1,20kg			1/2-13	325203
5133-MB					M12	220203-M
5133-R		[3.36lbs] 1,52kg			1/2-13	325203
5133-MR					M12	220203-M
5133-BR①		[2.89lbs] 1,31kg			1/2-13	325203
5133-MBR①		M12	220203-M			

① This item is available upon request

# 5130, 5131, 5133 SERIES

## Heavy-Duty Straight Line Action Clamps | Dimensions

mm [INCH]  
THIRD ANGLE PROJECTION



Model	A	A1	A3	B	B1	B2	B3	C	D	D1	H	L	L1	L2
5131						-								
5131-M	28.6	44	7.7	47.6	64	-	29	28	8.6	13	63.1	193.4	83	29.3
5131-R	[1.13]	[1.73]	[0.30]	[1.87]	[2.52]	18.5	[1.14]	[1.10]	[0.34]	[0.51]	[2.49]	[7.61]	[3.27]	[1.15]
5131-MR						[0.73]								
5130						-								
5130-M	44.5	64	9.8	58.7	76	-	40	35	10.5	19	92.3	283	132	49.7
5130-R	[1.75]	[2.52]	[0.38]	[2.31]	[2.99]	27.2	[1.57]	[1.38]	[0.41]	[0.75]	[3.63]	[11.14]	[5.20]	[1.96]
5130-MR						[1.07]								
5133						-								
5133-M	44.5	64	9.8	58.7	76	-	39	35	10.5	19	97.5	331.4	167	82.2
5133-R	[1.75]	[2.52]	[0.38]	[2.31]	[2.99]	31.4	[1.54]	[1.38]	[0.41]	[0.75]	[3.84]	[13.05]	[6.58]	[3.24]
5133-MR						[1.24]								

Model	B2	B3	C1	D1	H1
5131-B	-				
5131-MB	-	29	22	13	57.1
5131-BR ⓘ	12.4	[1.14]	[0.87]	[0.51]	[2.25]
5131-MBR ⓘ	[0.49]				
5130-B	-				
5130-MB	-	40	29	19	86.3
5130-BR ⓘ	21.2	[1.57]	[1.14]	[0.75]	[3.40]
5130-MBR ⓘ	[0.84]				
5133-B	-				
5133-MB	-	39	29	19	91.5
5133-BR ⓘ	25.4	[1.54]	[1.14]	[0.75]	[3.60]
5133-MBR ⓘ	[1.00]				

ⓘ This item is available upon request

# 5150 SERIES

## Heavy-Duty Straight Line Action Clamps | Product Overview

### Features:

- Square plunger provides positive radial location
- Reverse action allows the handle to stay out of the work zone
- Hardened steel pivot pins and bushings provide long life
- Black oxide finish with hardened plungers

### Applications:

- Welding fixtures
- Assembly fixtures
- Light machining

**5150/5150-M**  
Flanged Base



**5150-B/5150-MB**  
Solid Base



**5150-R/5150-MR**  
Flanged Base  
with  
DESTACO®  
Toggle Lock  
Plus™



**5150-BR①/5150-MBR①**  
Solid Base  
with  
DESTACO®  
Toggle Lock  
Plus™



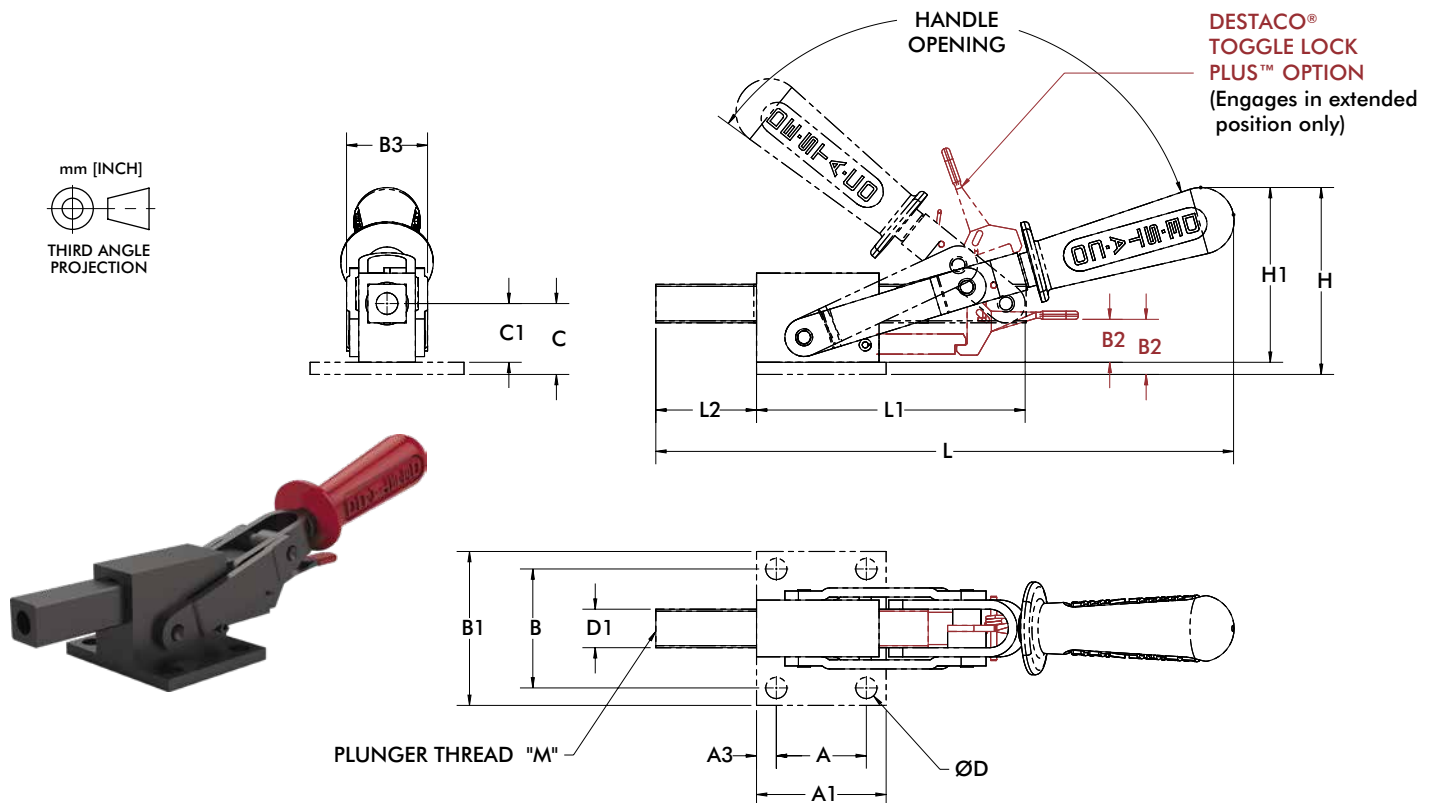
## Technical Information

Model	Max. Holding Capacity	Weight	Plunger Travel mm[in.]	Handle Opening	Plunger Thread (M)	Recommended Spindle (not supplied)
5150	[5800lbf.] 25800N	[3.00lbs]	[1.91] 48.4	125°	1/2-13	325203
5150-M		1,36kg			M12	220203-M
5150-B		[2.50lbs]			1/2-13	325203
5150-MB		1,13kg			M12	220203-M
5150-R		[3.15lbs]			1/2-13	325203
5150-MR		1,43kg			M12	220203-M
5150-BR①		[2.68lbs]			1/2-13	325203
5150-MBR①		1,22kg			M12	220203-M

① This item is available upon request

# 5150 SERIES

## Heavy-Duty Straight Line Action Clamps | Product Overview



Model	A	A1	A3	B	B1	B2	B3	C	C1	D	D1
5150	44.5	64	9.8	58.7	76			35	-	10.5	
5150-M	[1.75]	[2.52]	[0.38]	[2.31]	[2.99]			[1.57]	-	[0.41]	
5150-B	-	-	-	-	-			-	29	-	
5150-MB	-	-	-	-	-		40	-	[1.14]	-	19
5150-R	44.5	64	9.8	58.7	76	27.2	[1.57]	35	-	10.5	[0.75]
5150-MR	[1.75]	[2.52]	[0.38]	[2.31]	[2.99]	[1.07]		[1.57]	-	[0.41]	
5150-BR	-	-	-	-	-	21.2		-	29	-	
5150-MBR	-	-	-	-	-	[0.84]		-	[1.14]	-	

Model	H	H1	L	L1	L2	M
5150	92.3	-				1/2-13
5150-M	[3.63]	-				M12
5150-B	-	86.3				1/2-13
5150-MB	-	[3.40]	285.3	72.6	49.7	M12
5150-R	92.3	-	[11.23]	[2.86]	[1.96]	1/2-13
5150-MR	[3.63]	-				M12
5150-BR <sup>①</sup>	-	86.3				1/2-13
5150-MBR <sup>①</sup>	-	[3.40]				M12

<sup>①</sup> This item is available upon request

# 602, 604, 624 SERIES

## Straight Line Action Clamps | Product Overview

### Features:

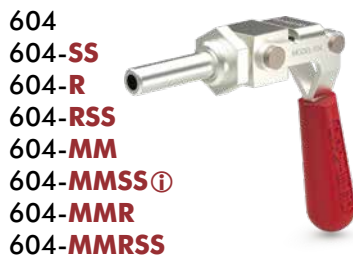
- Versatile and compact straight line action clamps
- Threaded body for through hole mounting
- -SS models are stainless steel
- DESTACO® Toggle Lock Plus™ versions available (604, 624 only)

### Applications:

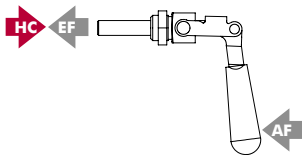
- Assembly
- Checking fixtures
- Welding fixtures
- Tensioning devices

### Also Available:

See page MC-ACC-1 for accessories



## Technical Information | Holding Capacities | Dimensions



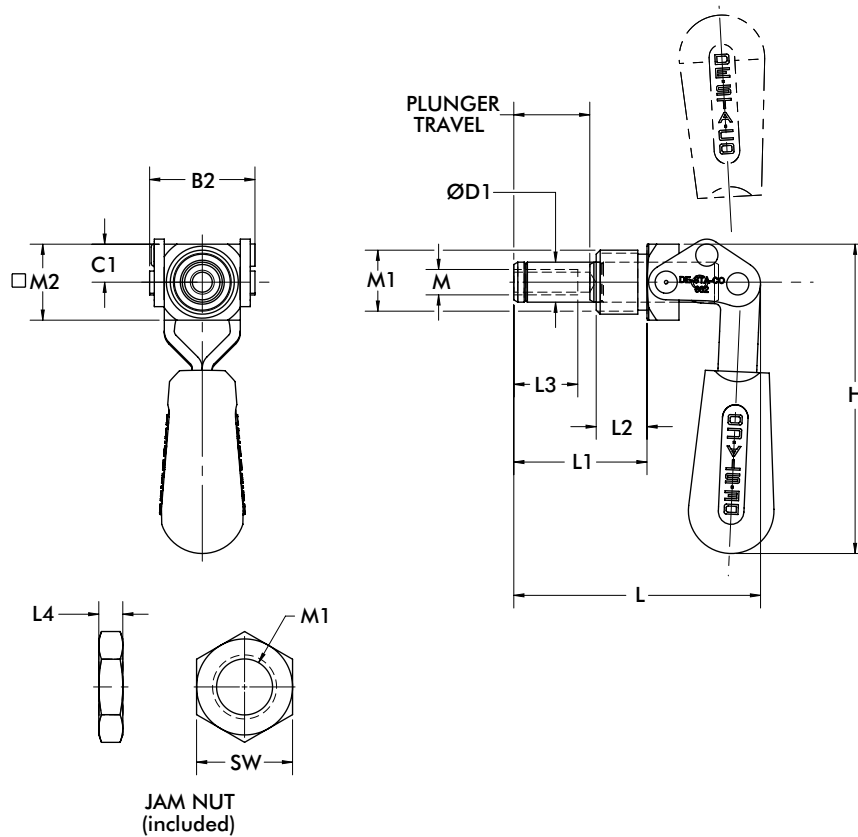
Model	Max. Holding Capacity	Weight	EF:AF (pushing/pulling)	Plunger Travel	Plunger Thread	Spindle (Recommended)	Mounting Nut (Supplied)	
602					1/4-20	205203	602105	
602-SS	[200 lbf]	[0.12lb]	31:1/28:1	[0.75] 19	M6	202943	602905	
602-MM	900 N	0,05kg				205203-M	602105-M	
602-MMSS						202943-M	602905-M	
604	[300 lbf]					45:1/26:1	[1.50] 38	5/16-18
604-R	1330 N		--	606904				
604-SS	[400 lbf]	[0.44lb] 0,20kg	M8	207943	606104-M			
604-RSS	1780 N			207943-M (included)	606904-M			
604-MM	[300 lbf]							
604-MMR	1330 N							
604-MMSS ⓘ	[400 lbf]							
604-MMRSS	1780 N							
624			49:1/21:1	[2.63] 66	3/8-16	210203	624105	
624-R						237943 (included)	624905	
624-SS	[700 lbf]	[1.63lb]				M10	210203-M	624105-M
624-RSS	3110 N	0,74kg						
624-MM								
624-MMR								
624-MMRSS								

ⓘ This item is available upon request **HC** = Holding Capacity, **EF** = Exerting Force, **AF** = Applied Force

# 602 SERIES

Straight Line Action Clamps | Dimensions | -SS/-MM/-MMSS

602  
602-SS  
602-MM  
602-MMSS



Model no.	M	M1	SW
602	1/4-20	5/8-18	[0.88] 22,2
602-SS			
602-MM	M6	M16x1.5	[0.87] 22
602-MMSS			



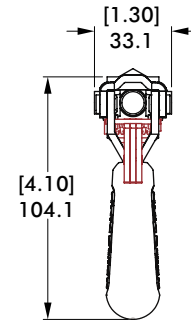
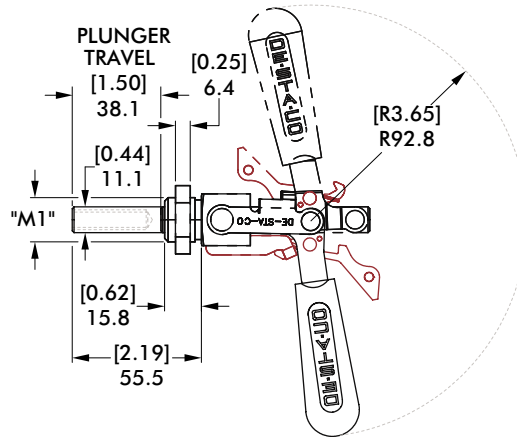
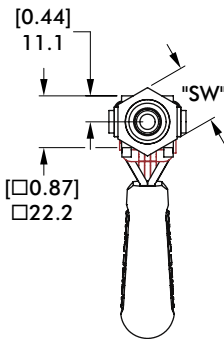
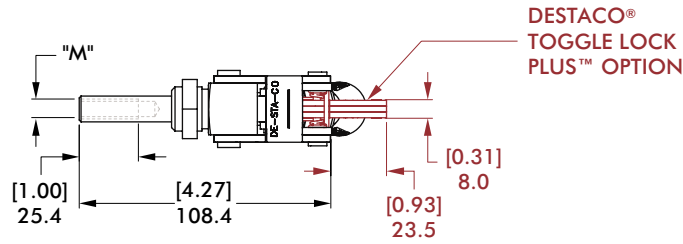
# 604 SERIES

Straight Line Action Clamps | Dimensions | -SS/-MM/-MMSS/-R/-RSS/-MMR/-MMRSS

604  
604-SS  
604-MM  
604-MMSS ①



604-R  
604-RSS  
604-MMR  
604-MMRSS



Model no.	M	M1	SW
604			
604-SS			[1.00] 25,4
604-R	5/16-18	3/4-16	
604-RSS			
604-MM			
604-MMSS			
604-MMR	M8	M20x1.5	[1.18] 30
604-MMRSS			

# 624 SERIES

## Straight Line Action Clamps | Dimensions | -SS/-MM/-R/-RSS/-MMR/-MMRSS

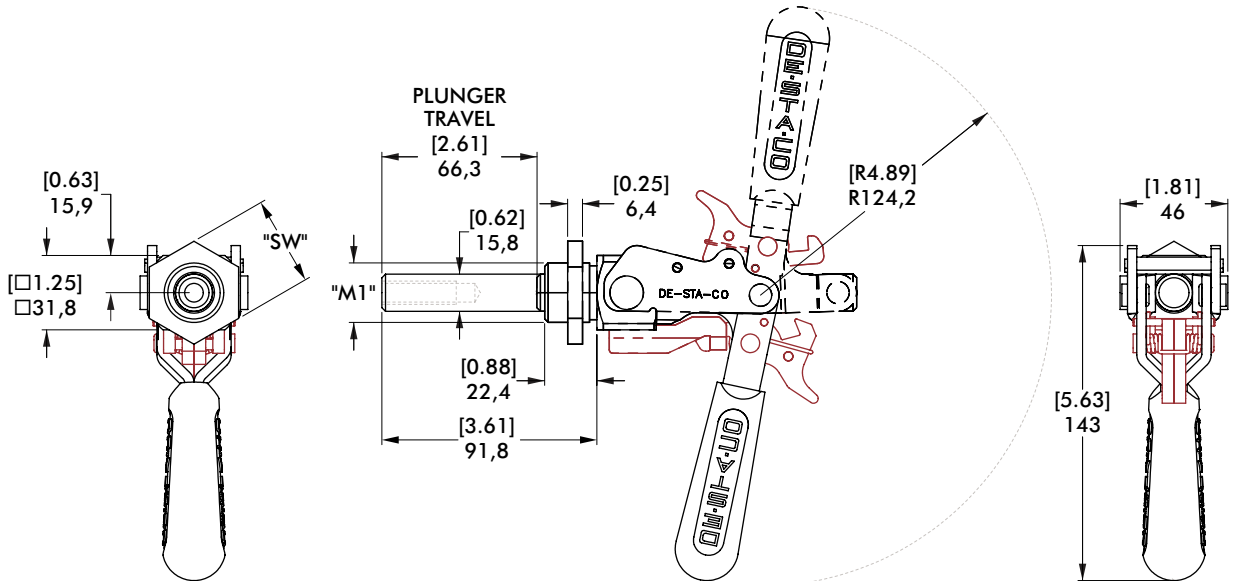
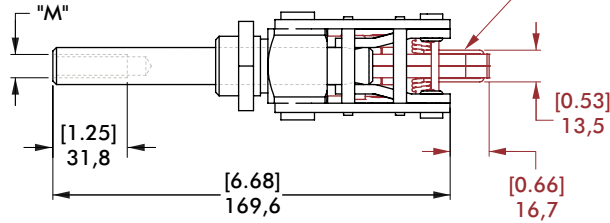
624  
624-SS  
624-MM



624-R  
624-RSS  
624-MMR  
624-MMRSS



DESTACO®  
TOGGLE LOCK  
PLUS™ OPTION



Model no.	M	M1	SW
624			
624-SS	3/8-16	1-14	[1.50] 38,1
624-R			
624-RSS			
624-MM			
624-MMR	M10	M27x2	[1.61] 41
624-MMRSS			

# 6004 SERIES

## Straight Line Action Clamps | Product Overview

### Features:

- Similar in size to Model 604, with a solid body
- 50% more holding capacity than 604
- May be mounted through a hole or in a tapped hole.
- Locks over center in the extended and retracted position

### Applications:

- Assembly
- Checking fixtures
- Welding fixtures
- Tensioning devices

### Also Available:

See page MC-ACC-1 for accessories

Covered under one or more U.S./International Patents

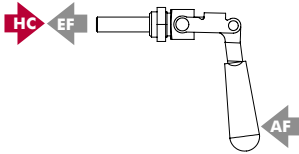
6004  
6004-MM



6004-R  
6004-MMR  
with  
DESTACO®  
Toggle Lock  
Plus™

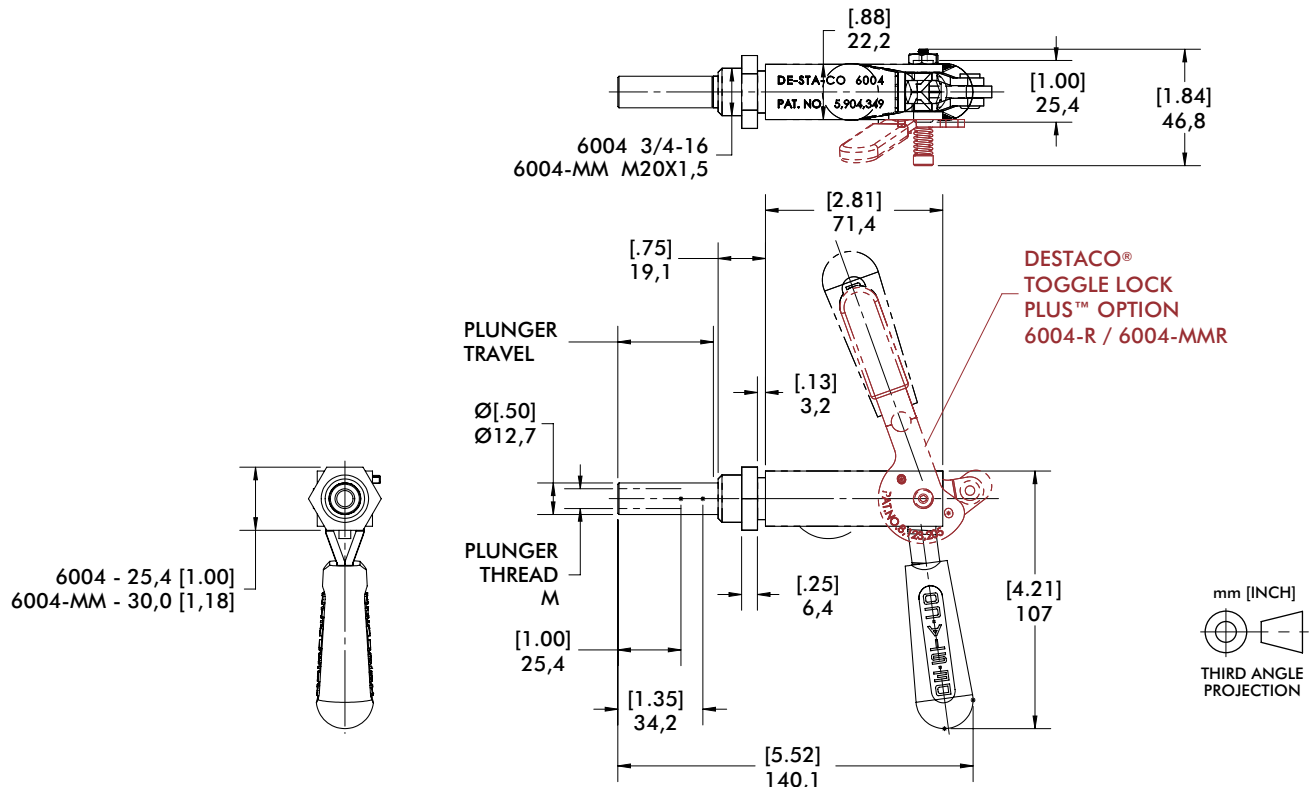


## Technical Information | Holding Capacities | Dimensions



Model	Max. Holding Capacity	Weight	EF:AF (pushing)	Plunger Travel	(M) Plunger Thread	Spindle (Recommended)	Mounting Nut (Supplied)
6004	[450 lbf] 2000 N	[0.81lb] 0,37kg	14.4:1	38 [1.50]	5/16-18	207203	606104
6004-MM		[0.89lb] 0,40kg			M8	207203-M	606104-M
6004-R					5/16-18	207203	606104
6004-MMR					M8	207203-M	606104-M

HC = Holding Capacity, EF = Exerting Force, AF = Applied Force



# 602, 604, 624, 6004 SERIES

Straight Line Action Clamps | Mounting Plates

## Features:

- Mounting accessories for Threaded Body Straight Line Action Clamps

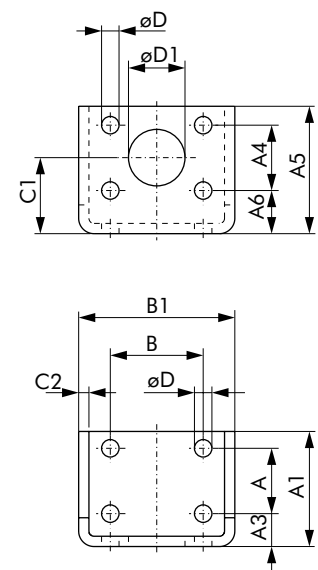
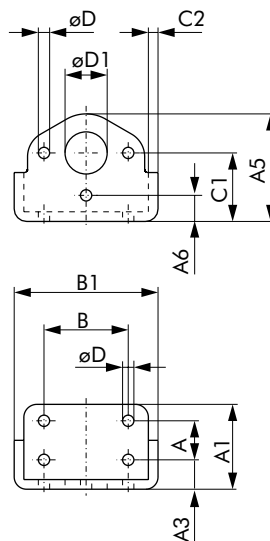
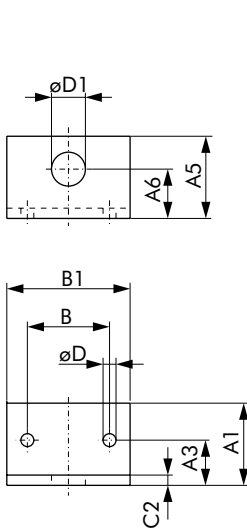
602106-M



604106,  
604106-M



624106-M



Item Number	For Use With	A	A1	A3	A4	A5	A6	B	B1	C1	C2	D	D1
602106-M	602 602-MM	--	[1.57] 40	[0.87] 22	--	[1.57] 40	[0.94] 24	[1.57] 40	[2.36] 60	--	[0.20] 5	[0.25] 6,3	[0.65] 16,5
604106	604 6004	[0.75] 19,1	[1.60] 40,6	[0.55] 14	--	[2.05] 52,1	[0.50] 12,7	[1.62] 41,1	[2.80] 71,1	[1.30] 33	[0.19] 4,7	[0.22] 5,6	[0.75] 19,1
604106-M	604-MM 6004-MM												[0.81] 20,5
624106-M	624 624-MM	[1.25] 31,8	[2.20] 56	[0.63] 16	[1.25] 31,8	[2.44] 62	[0.83] 21	[1.78] 45,2	[2.99] 76	[1.46] 37	[0.20] 5	[0.33] 8,5	[1.08] 27,5





# 670, 675, 690, 695 SERIES

## Straight Line Action Clamps | Product Overview

### Features:

- Precision clamping for high production
- Adjustable collet-type bushing minimizes radial plunger movement
- Plunger has a flat surface for anti rotation
- Pre-load nut and hold open device included

### Applications:

- Assembly
- Welding

670-1MBPLS



675-1MBPLS



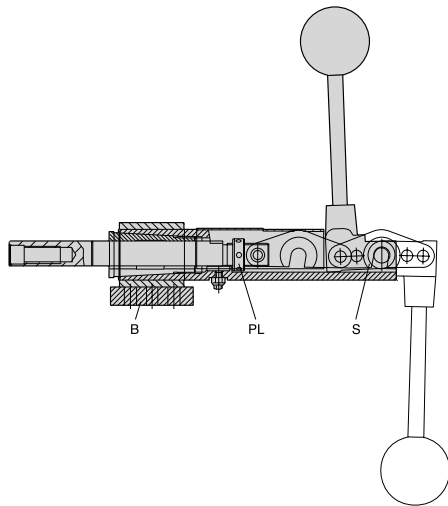
690-1MBPLS



695-1MBPLS ⓘ



## Series 670, 675, 690, 695 Technical Information | Holding Capacities



Model	Max. Holding Capacity	Weight	Plunger Travel	Plunger Thread
670-1MBPLS	[2400 lbf] 10680 N	[4.2lb] 1,91 kg	[2.25] 57,2	M12
675-1MBPLS		[4.0lb] 1,81 kg	[1.10] 28	
690-1MBPLS	[5000 lbf] 22240 N	[8.2lb] 3,72 kg	[3.00] 76,2	M16
695-1MBPLS ⓘ		[7.2lb] 3,27 kg	[1.50] 38,1	

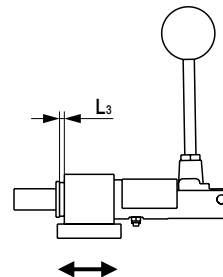
ⓘ This item is available upon request

The unique feature of these clamps is the collet-type bushing that can be adjusted to eliminate plunger end movement after long repeated use. The plunger also has a flat which prevents lateral movement and allows offset piloting and holding. The plunger is drilled and tapped for threaded spindles or custom fixturing.

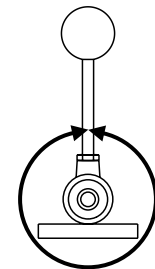
The adjustable pre-load nut (PL) can be used to lock the clamp against itself when not under pressure and therefore prevent opening when mounted vertically. The spring hold-open device (S) prevents the clamp from accidentally closing.

The mounting base (B) is supplied disassembled with the four models, to enable welding the base and the main assembly in any handle position.

Series 675 and 695 (shorter stroke) reach the over-center position only when clamping. Series 670 and 690 (longer stroke) lock in both the extended and retracted position.



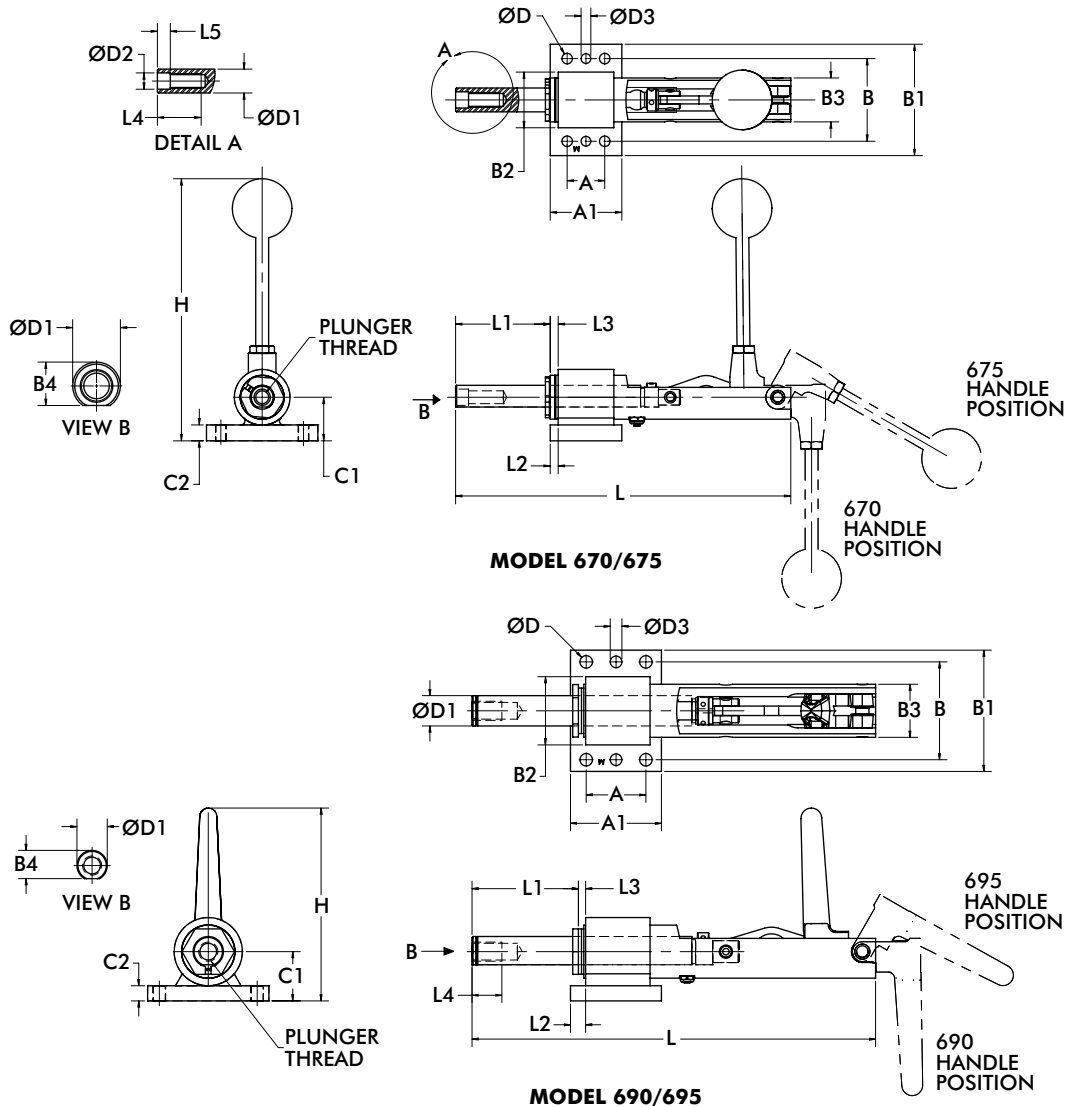
Welding range  $L_3$  axial  
0-8mm [0-0.31in.]



Welding range radial 360°

# 670, 675, 690, 695 SERIES

## Straight Line Action Clamps | Dimensions



Model	A	A1	B	B1	B2	B3	B4	C1	C2	D	D1	D2H7	D3
670-1MBPLS	[1.18]	[2.24]	[2.60]	[3.50]	[1.75]	[1.38]	[0.68]	[1.37]	[0.50]	[0.33]	[0.75]	[0.51]	[0.31]
675-1MBPLS	30	57	66	89	44,5	35	17,3	34,8	12,7	8,4	19	13	7,8
690-1MBPLS	[1.97]	[3.00]	[3.23]	[4.00]	[2.25]	[1.75]	[0.93]	[1.63]	[0.50]	[0.41]	[1.00]	--	[0.39]
695-1MBPLS	50	76,2	82	101,6	57,2	44,4	23,7	41,3	12,7	10,5	25,4	--	9,8

Model	H	L	L1	L2	L3	L4	L5
670-1MBPLS	[8.11]	[10.55]	[2.97]	[0.25]	[0-0.31]	[1.38]	[0.41]
675-1MBPLS	206	[7.68]	[1.74]	6,4	0-8	35	10,3
690-1MBPLS	[6.37]	[13.31]	[3.69]	[0.50]	[0-0.31]	[0.98]	--
695-1MBPLS	162	[9.45]	[2.25]	[0.38]	0-8	25	--