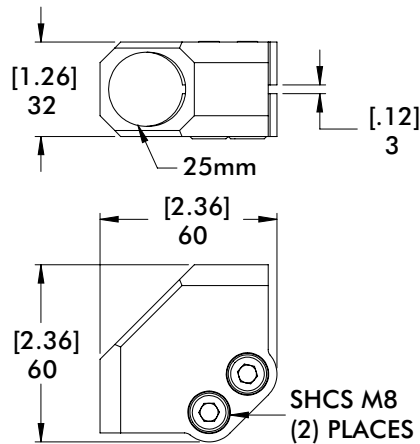


# SEC, CLD SERIES

Accelerate® Tooling Collection | Dimensions

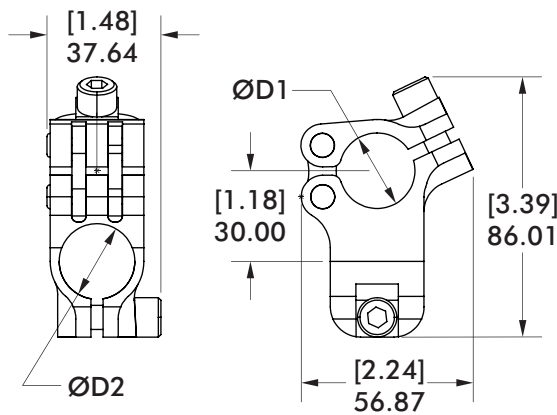
## SEC Wrist Clamp



Material: Aluminum

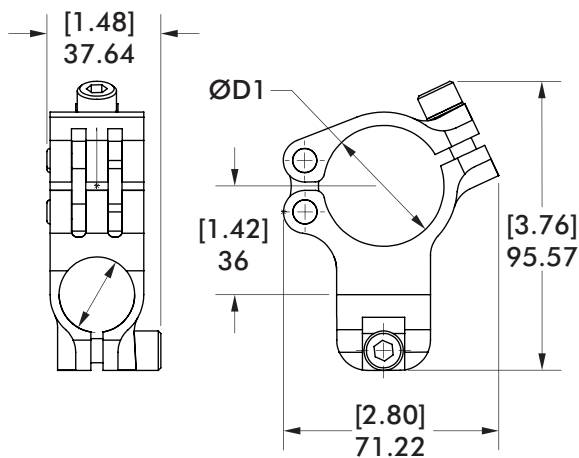
Model Number	Weight
SEC-25M-25M-A	[0.10 lb] 47g

## CLD Cross Clamps

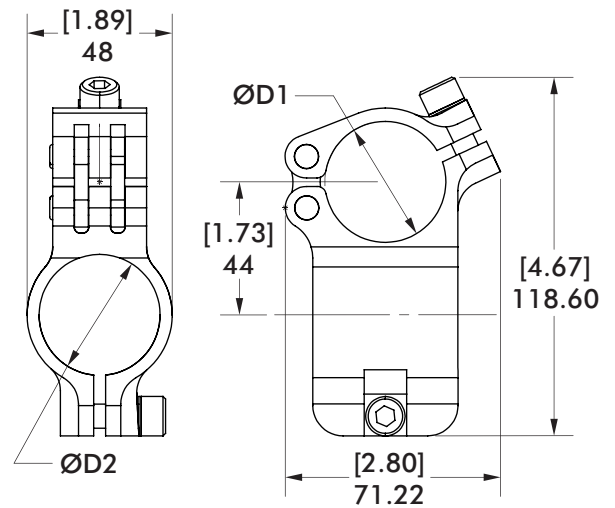


Model Number	ØD1	ØD2	Weight g [lb]
CLD-10E-10E-A	1.00 in	1.00 in	158.5 [0.35]
CLD-25M-25M-A	25 mm	25 mm	161.1 [0.36]

CLD-10E-10E-A	CLD-15E-10E-A	CLD-15E-15E-A
CLD-25M-25M-A	CLD-40M-25M-A	CLD-40M-40M-A



Model Number	ØD1	ØD2	Weight g [lb]
CLD-15E-10E-A	1.50 in	1.00 in	175.4 [0.39]
CLD-40M-25M-A	40 mm	25 mm	175.1 [0.39]



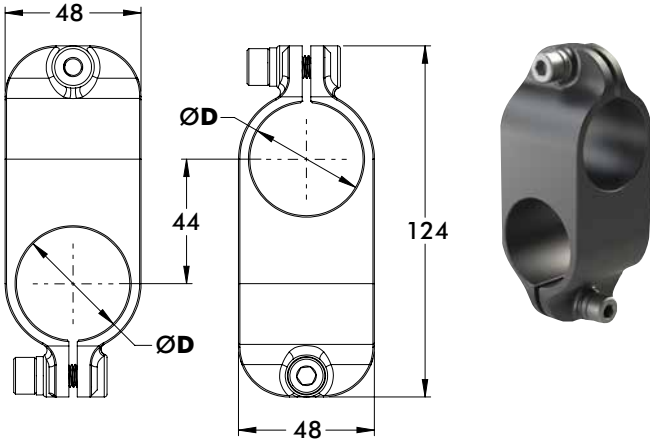
Model Number	ØD1	ØD2	Weight g [lb]
CLD-15E-15E-A	1.50 in	1.50 in	270.7 [0.60]
CLD-40M-40M-A	40 mm	40 mm	249.1 [0.55]

# CL SERIES

## Accelerate® Tooling Collection | Dimensions

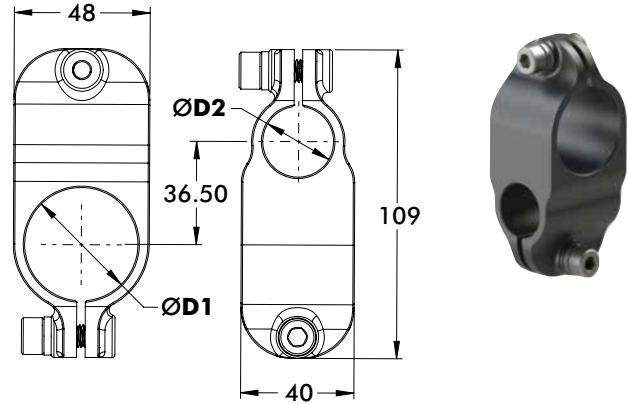
### CL Cross Clamps

Material: High Strength Aluminum



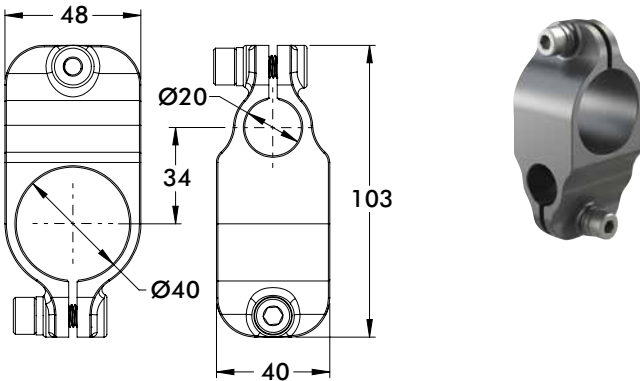
Ø40mm/1.50 in to Ø40mm/1.50 in Cross Clamp

Model Number	ØD	Weight
CL-40M-40M-A	40mm	233g [0.51 lb]
CL-15E-15E-A	1.50 in	283g [0.62 lb]



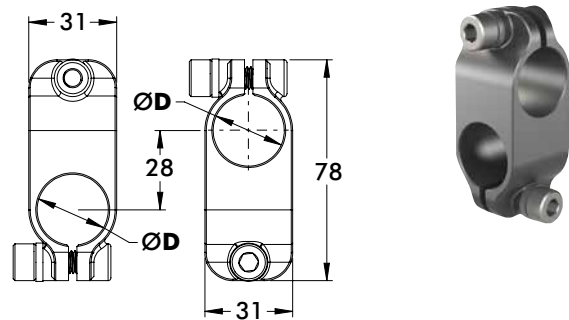
Ø40mm/1.50 in to Ø25mm/1.00 in Cross Clamp

Model Number	ØD1	ØD2	Weight
CL-40M-25M-A	40mm	25mm	214g [0.47 lb]
CL-15E-10E-A	1.50 in	1.00 in	223g [0.50 lb]



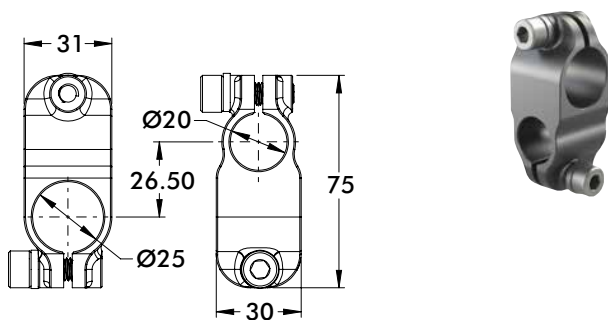
Ø40mm to Ø20mm Cross Clamp

Model Number	Weight
CL-40M-20M-A	202g [0.45 lb]



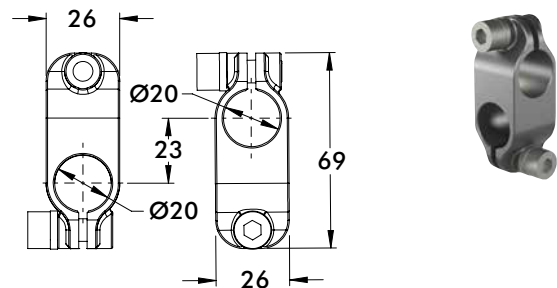
Ø25mm/1.00 in to Ø25mm/1.00 in Cross Clamp

Model Number	ØD	Weight
CL-25M-25M-A	25mm	102g [0.22 lb]
CL-10E-10E-A	1.00 in	105g [0.23 lb]



Ø25mm to Ø20mm Cross Clamp

Model Number	Weight
CL-25M-20M-A	98g [0.22 lb]



Ø20mm to Ø20mm Cross Clamp

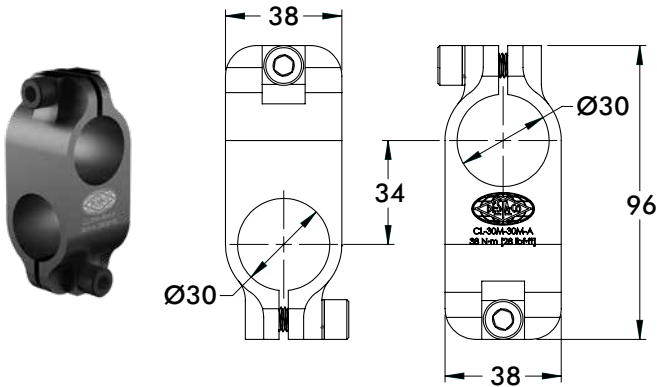
Model Number	Material	Weight
CL-20M-20M-A	Aluminum	52g [0.11 lb]
CL-20M-20M-S	Steel	178g [0.39 lb]

# CL SERIES

Accelerate® Tooling Collection | Dimensions

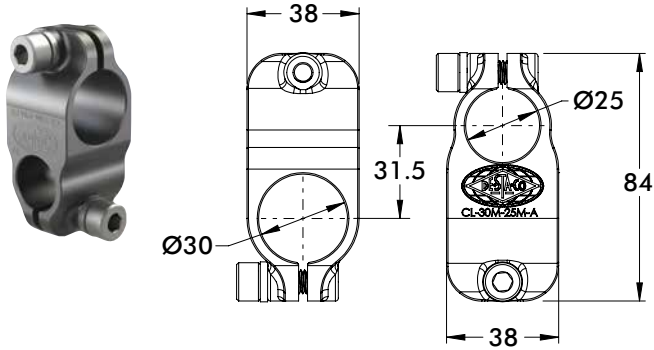
## CL Cross Clamps

Material: High Strength Aluminum



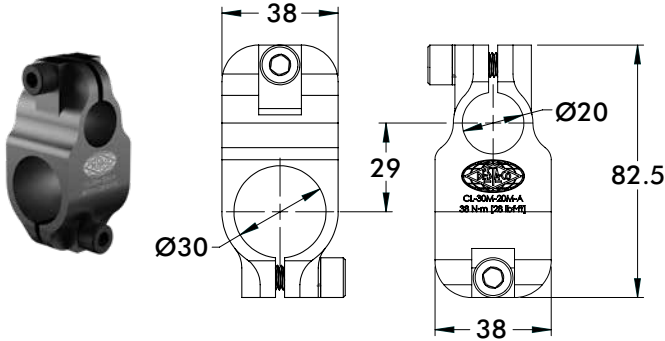
Ø30mm to Ø30mm Cross Clamp

Model Number	Material	Weight
CL-30M-30M-A	Aluminum	200g [0.44 lb]
CL-30M-30M-S	Steel	415g [0.91 lb]



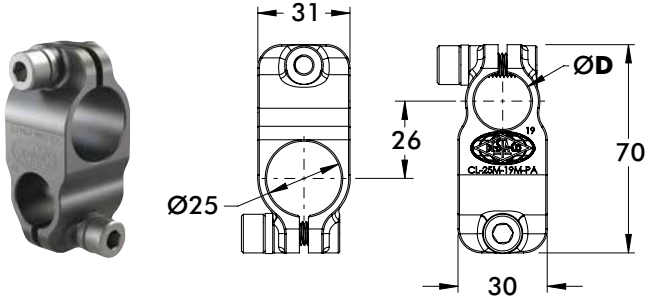
Ø30mm to Ø25mm Cross Clamp

Model Number	Weight
CL-30M-25M-A	148g [0.33 lb]



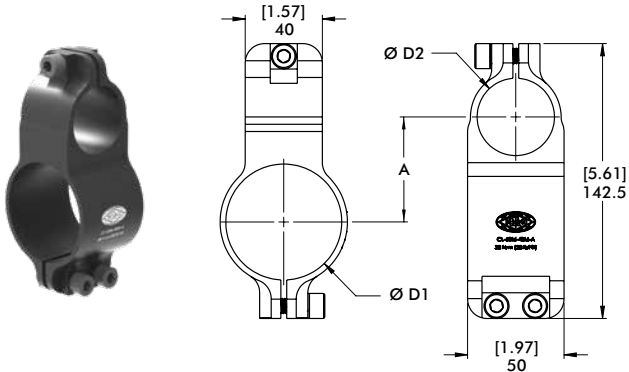
Ø30mm to Ø20mm Cross Clamp

Model Number	Weight
CL-30M-20M-A	125g [0.28 lb]



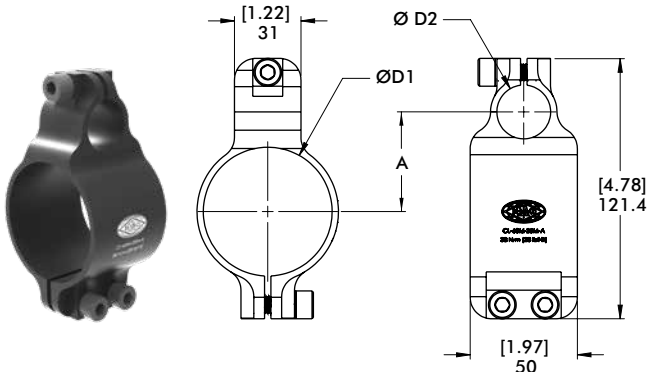
Ø25mm to Apple Core Cross Clamp

Model Number	ØD	Weight
CL-25M-19M-PA-A	19	95g [0.21 lb]
CL-25M-20M-PA-A	20	94g [0.21 lb]



Ø60mm/2.50 in to Ø40mm/1.50 in Cross Clamp

Model Number	ØD1	ØD2	A	Weight
	mm [in]	mm [in]	mm [in]	g [lb]
CL-60M-40M-A	60	40	54,5	276 [0.61]
CL-25E-15E-A	[2.50]	[1.50]	[2.13]	271 [0.60]



Ø60mm/2.50 in to Ø25mm/1.00 in Cross Clamp

Model Number	ØD1	ØD2	A	Weight
	mm [in]	mm [in]	mm [in]	g [lb]
CL-60M-25M-A	60	25	46,5	220 [0.49]
CL-25E-10E-A	[2.50]	[1.00]	[1.91]	228 [0.50]