

BODYBUILDER™ SWIVEL ARMS

BodyBuilder™ Octagonal Tooling | Dimensions | Technical Specifications



30B50-MSA 30mm Swivel Arms for .50"(in) Apple Core Accessories

Features:

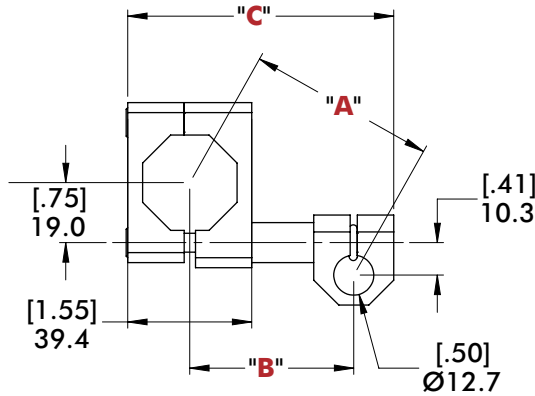
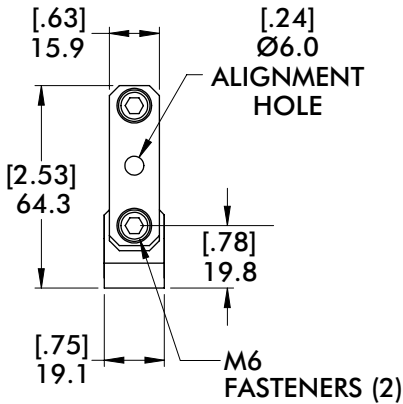
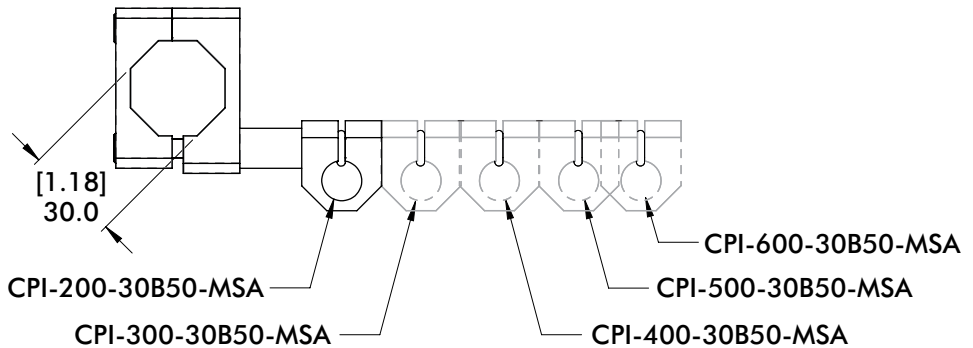
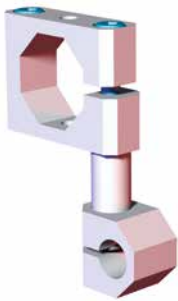
- Mounts to BodyBuilder™ 30mm extrusion boom.
- One bolt design for easy assembly and adjustment, allowing accessories to be repositioned easily.
- Provides 360° of adjustments in (3) axes.
- Used to mount venturi, bumpers, round locators, and proximity switches.

Specifications:

Max. Static Clamp Load:
102 Nm [75 ft-lb]

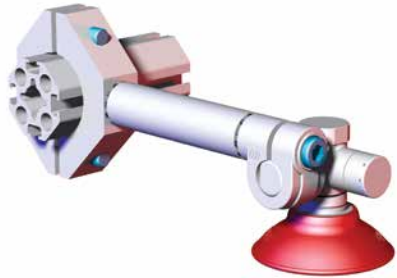
Material:

Body:
Cast Aluminum
Insert:
Machined Aluminum



CPI- <u>L</u> -30B50-MSA SWIVEL ARM				
"L"	"A"	"B"	"C"	Weight
200	59.8 [2.35]	52.1 [2.05]	84.5 [3.33]	.10 kg [.22 lb]
300	82.6 [3.25]	77.2 [3.04]	109.6 [4.32]	.11 kg [.24 lb]
400	106.2 [4.18]	102.1 [4.02]	134.5 [5.30]	.12 kg [.26 lb]
500	130.6 [5.14]	127.3 [5.01]	159.7 [6.29]	.13 kg [.29 lb]
600	150.0 [5.90]	147.1 [5.79]	179.5 [7.07]	.14 kg [.31 lb]

45B-CSA 45mm Swivel Arms for Ø19mm [.75 in] Apple Core Accessories



Specifications:

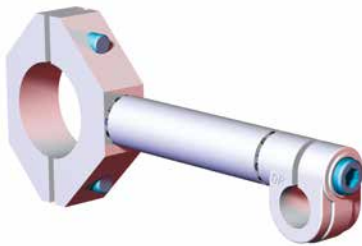
Max. Static Clamp Load:
271 Nm [200 ft-lb]

Material:

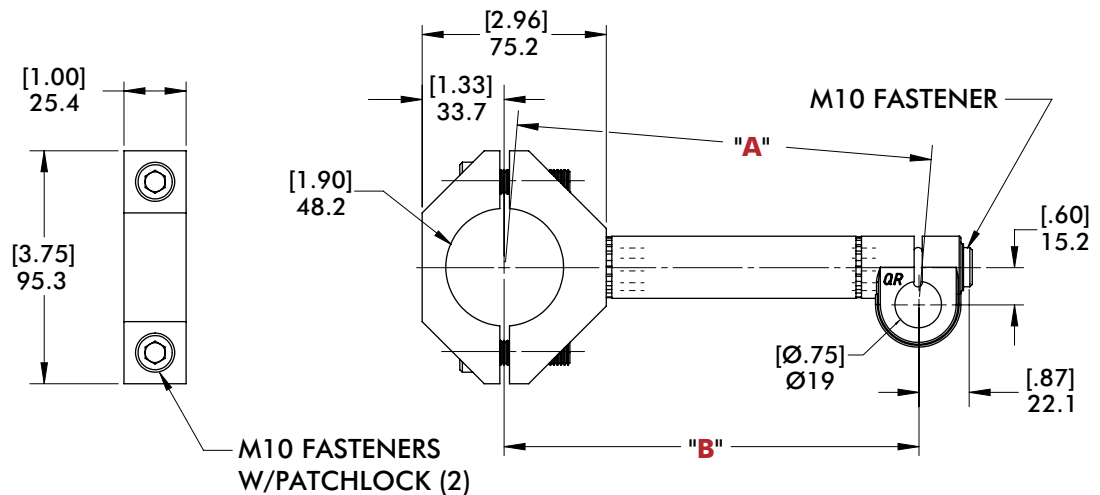
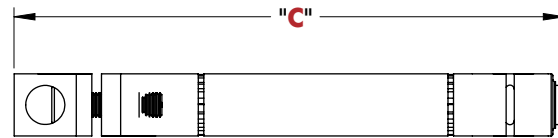
Body:
Cast Aluminum
Insert:
Machined Aluminum

Features:

- Mounts to BodyBuilder™ 45mm extrusion boom.
- One bolt design for easy assembly and adjustment, allowing accessories to be repositioned easily.
- Provides 360° of adjustments in (3) axes.
- Used to mount venturi, bumpers, round locators, and proximity switches.



CPI-180-45B-CSA SHOWN



CPI-" L "-45B-CSA SWIVEL ARM

" L "	"A"	"B"	"C"	Weight
130	119.8 [4.72]	118.8 [4.68]	140.9 [5.56]	.48 kg [1.06 lb]
180	169.8 [6.68]	169.1 [66.6]	224.9 [8.89]	.54 kg [1.20 lb]
230	219.7 [8.65]	219.1 [8.63]	275.0 [10.83]	.61 kg [1.34 lb]
280	269.6 [10.61]	269.2 [10.60]	325.0 [12.80]	.67 kg [1.47 lb]

BODYBUILDER™ SWIVEL ARMS



BodyBuilder™ Octagonal Tooling | Dimensions | Technical Specifications

SA-30 30mm Swivel Arms for Ø19mm [.75 in] Apple Core Accessories

Features:

- Mounts to BodyBuilder™ 30mm extrusion boom.
- One bolt design for easy assembly and adjustment, allowing accessories to be repositioned easily.
- Provides 360° of adjustments in (3) axes.
- Used to mount venturi, bumpers, round locators, and proximity switches.

Specifications:

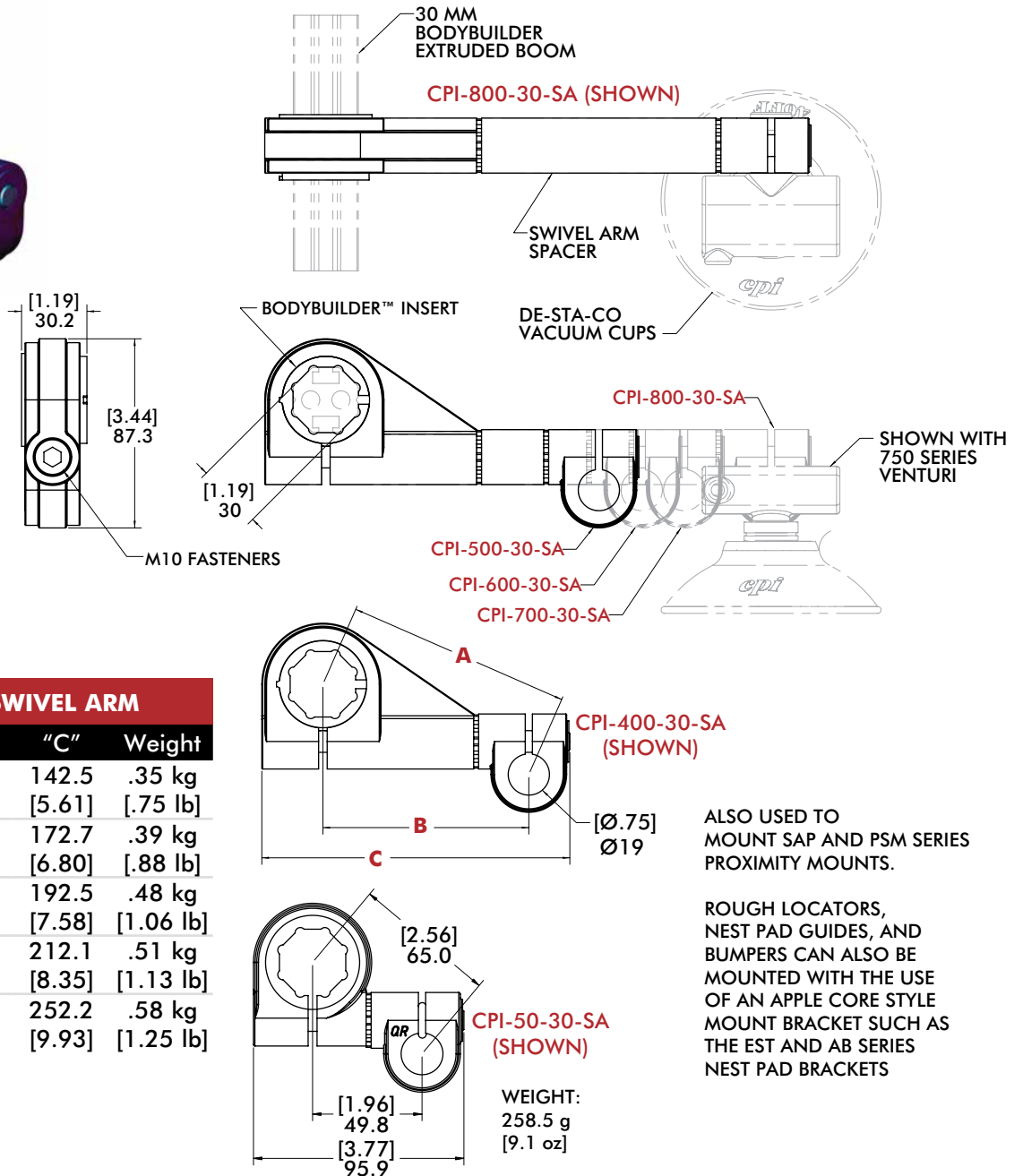
Max. Static Clamp Load:
271 Nm [200 ft-lb]

Material:

Body:
Cast Aluminum
Insert:
Machined Aluminum



CPI-400-30-SA SHOWN



CPI- " L "-30-SA SWIVEL ARM				
" L "	" A "	" B "	" C "	Weight
400	103.8 [4.09]	95.1 [3.74]	142.5 [5.61]	.35 kg [.75 lb]
500	132.8 [5.26]	126.0 [4.96]	172.7 [6.80]	.39 kg [.88 lb]
600	151.7 [5.97]	146.0 [5.75]	192.5 [7.58]	.48 kg [1.06 lb]
700	170.6 [6.72]	165.4 [6.51]	212.1 [8.35]	.51 kg [1.13 lb]
800	209.7 [8.26]	205.5 [8.09]	252.2 [9.93]	.58 kg [1.25 lb]

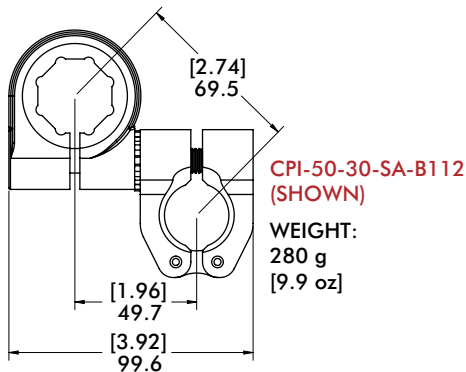
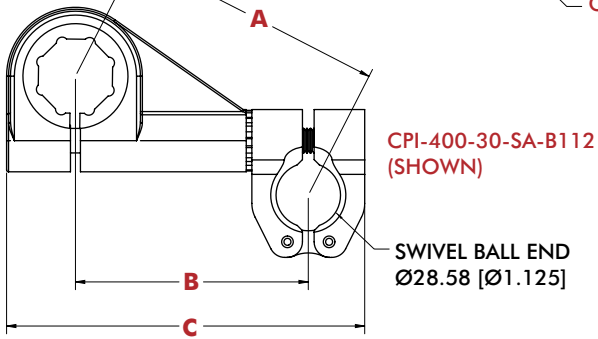
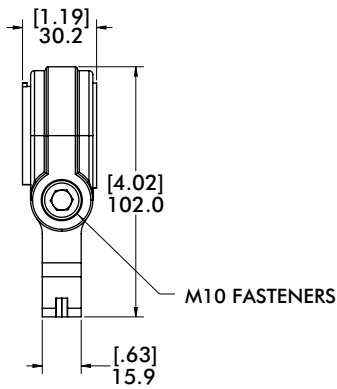
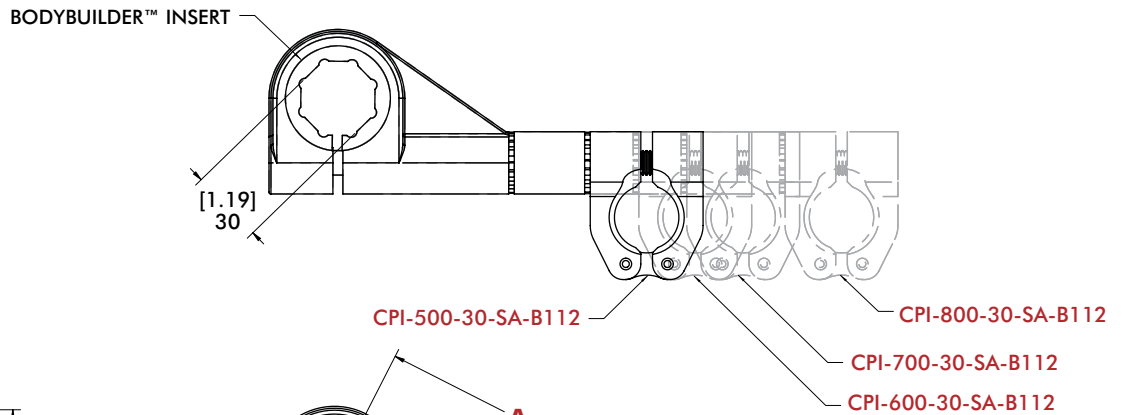
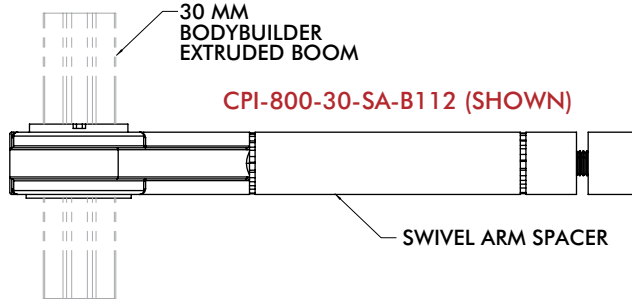
ALSO USED TO MOUNT SAP AND PSM SERIES PROXIMITY MOUNTS.

ROUGH LOCATORS, NEST PAD GUIDES, AND BUMPERS CAN ALSO BE MOUNTED WITH THE USE OF AN APPLE CORE STYLE MOUNT BRACKET SUCH AS THE EST AND AB SERIES NEST PAD BRACKETS

30-SA-B112 30mm Swivel Arms for Swivel Ball Mount Accessories



CPI-500-30-SA-B112 (SHOWN)



CPI- " L " -30-SA-B112 SWIVEL ARM				
" L "	" A "	" B "	" C "	Weight
400	106.7 [4.20]	95.0 [3.74]	146.1 [5.75]	.40 kg [.88 lb]
500	135.0 [5.32]	126.0 [4.96]	177.1 [6.97]	.46 kg [1.00 lb]
600	153.7 [6.05]	145.8 [5.74]	196.9 [7.75]	.49 kg [1.06 lb]
700	172.3 [6.78]	165.4 [6.51]	216.5 [8.52]	.53 kg [1.19 lb]
800	211.1 [8.31]	205.5 [8.09]	256.6 [10.10]	.60 kg [1.31 lb]