

# BODYBUILDER™ SWIVEL ARM ACCESSORIES



BodyBuilder™ Octagonal Tooling | Dimensions | Technical Specifications

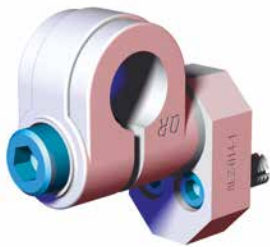
## BC19 30mm Bodybuilder to Ø19mm [.75 in] Apple Core Swivel End Mount

### Features:

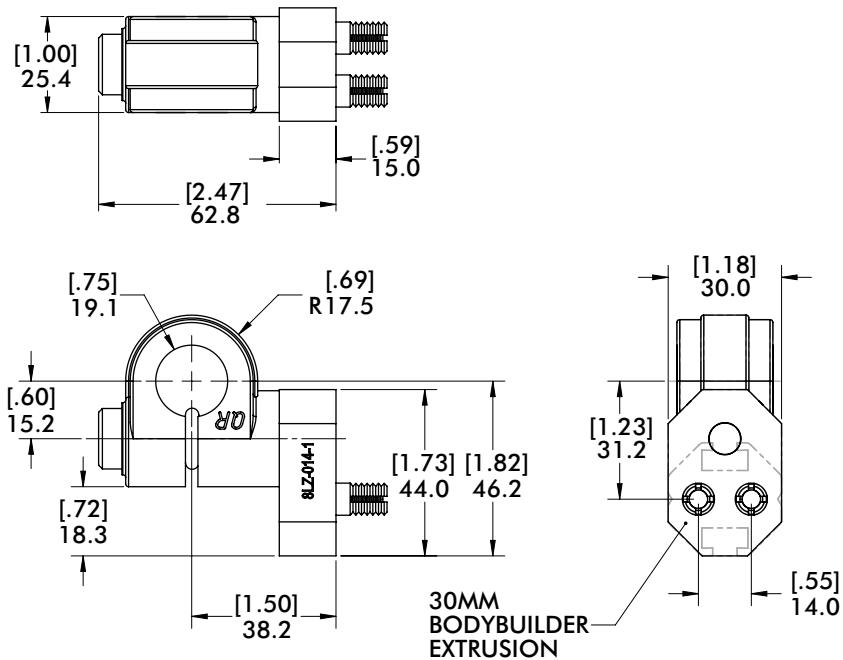
- Mounts to BodyBuilder™ 30mm extrusion boom.
- One bolt design for easy assembly and adjustment, allowing accessories to be repositioned easily.
- Provides 360° of adjustment along (2) axis.

### Specifications:

**Material:**  
Aluminum

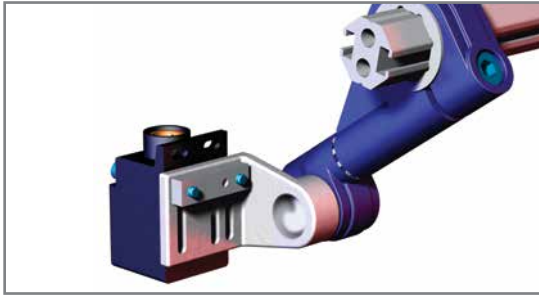


INCLUDES (2) INSERTS TO BE PRESS-FITTED INTO THE END OF 30MM BODYBUILDER™ OCTAGONAL BOOM



Model Number	Weight
CPI-BC-19	.13 kg [.28 lb]

## AB-750-SL Part Present Proximity Switch Mount



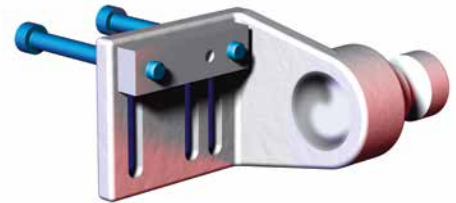
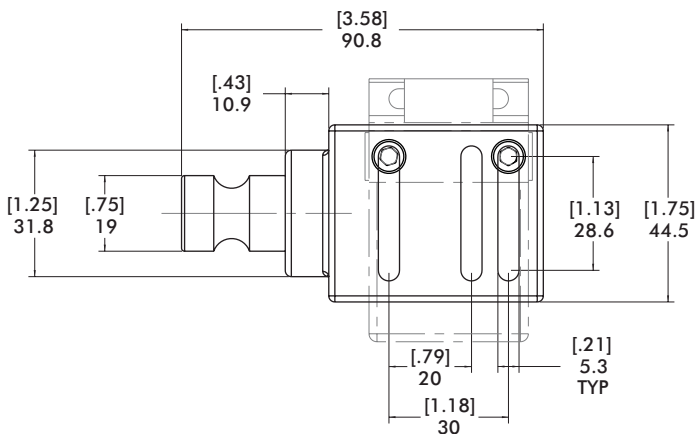
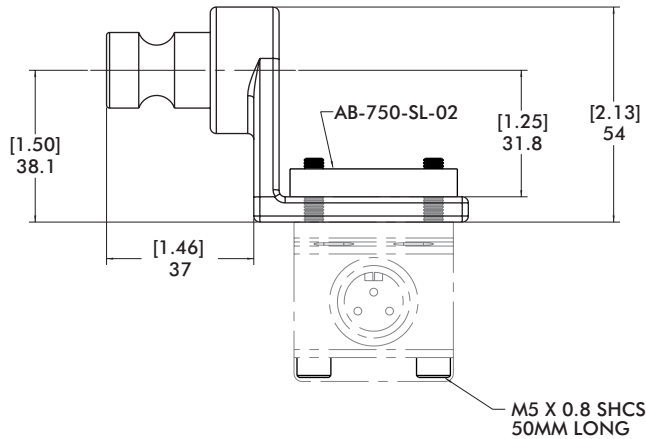
### Specifications:

**Max. Static Clamp Load:**  
271 Nm [200 ft-lb]

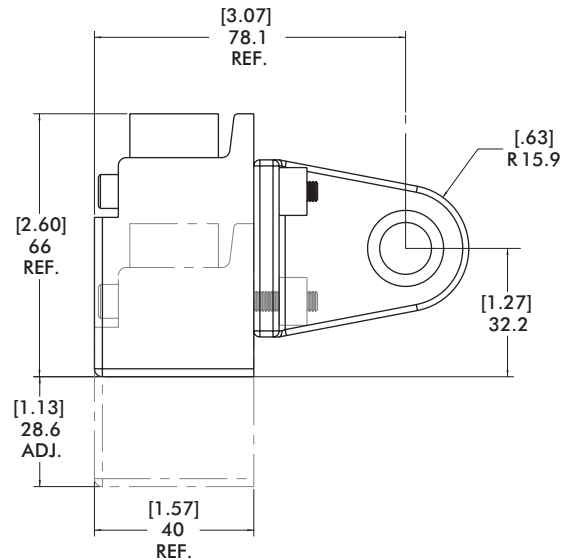
**Material:**  
Aluminum

### Features:

- Mounts a 40mm square proximity sensor to the BodyBuilder™ 30mm Swivel Arm (CPI-"L"-30-SA).
- Mount allows for 360 degrees of radial adjustment along one axis.
- Slots allows 28.6mm [1.13 in] of linear adjustment for fine tuning during final setup.



**FASTENERS AND NUT INCLUDED**



Model Number	Weight
CPI-AB-750-SL	.10 KG [.22 lb]

# BODYBUILDER™ SWIVEL ARM ACCESSORIES



BodyBuilder™ Octagonal Tooling | Dimensions | Technical Specifications

## NPG-15RL-400 Rough Locator

### Features:

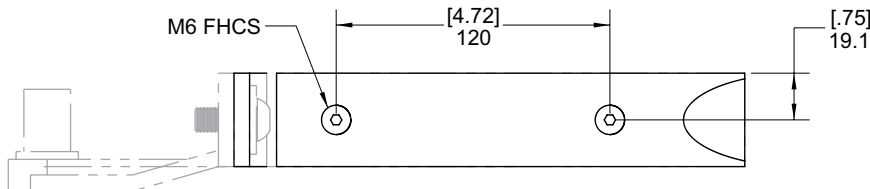
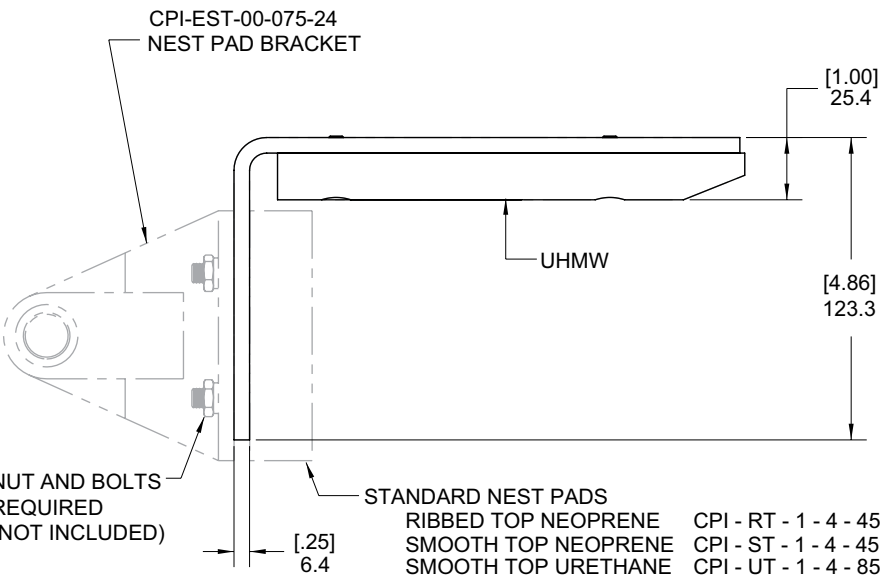
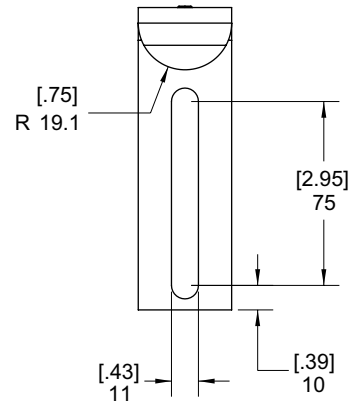
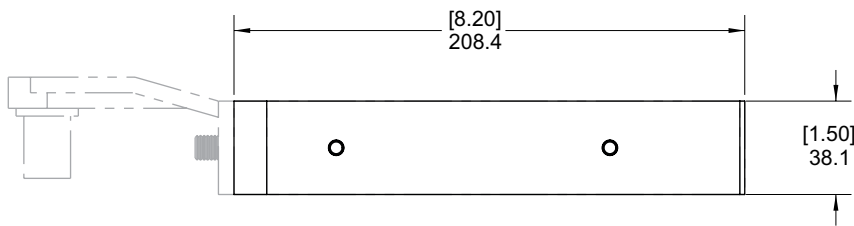
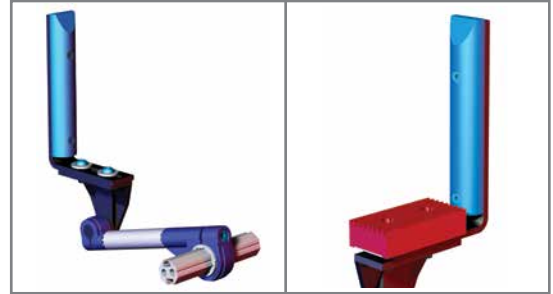
- Mounts to Nest Pad Brackets and indirectly to BodyBuilder™ 30mm Swivel Arm Mount.

### Specifications:

**Max. Static Clamp Load:**  
271 Nm [200 ft-lb]

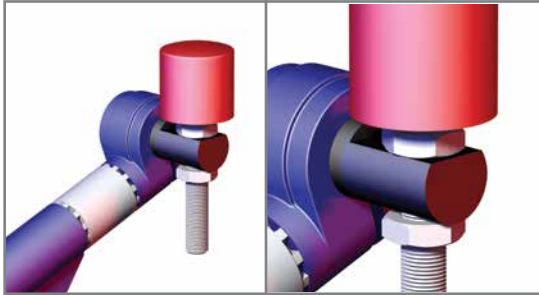
### Material:

Bracket: Steel  
Wear Surface: UHMW



Model Number	Weight
CPI-NPG-15RL-400	0.86 kg [1.90 lb]

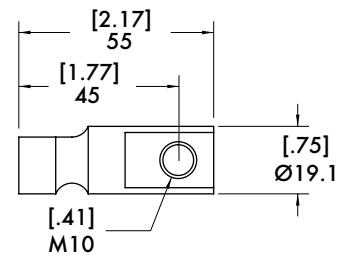
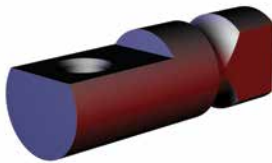
## SAP-BM10 Ø19mm [.75 in] Apple Core Nest Bumper Mount



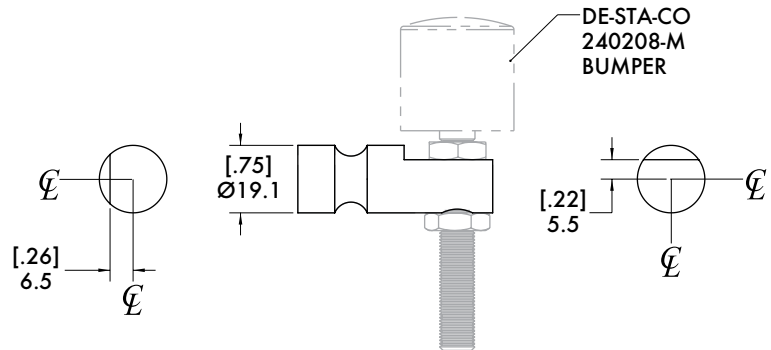
**Specifications:**

Max. Static Clamp Load:  
271 Nm [200 ft-lb]

Material:  
Steel



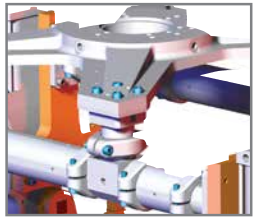
Model Number	Weight
CPI-SAP-BM10	.10 kg [.21 lb]



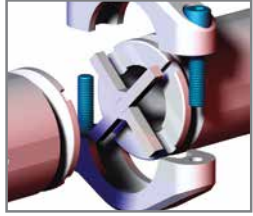
# SPIDERGRIP END EFFECTOR TOOLING SYSTEMS



## Table of Contents



SpiderGrip Heavy Duty Mid Mount.....5



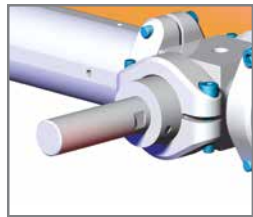
SpiderGrip Anchors and Collar Assemblies ..... 10



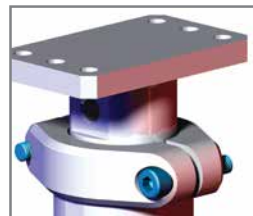
SpiderGrip Booms, Adaptors, and Spacers ..... 17



SpiderGrip Junction Components.....21



SpiderGrip Single End Extension Mount .....26

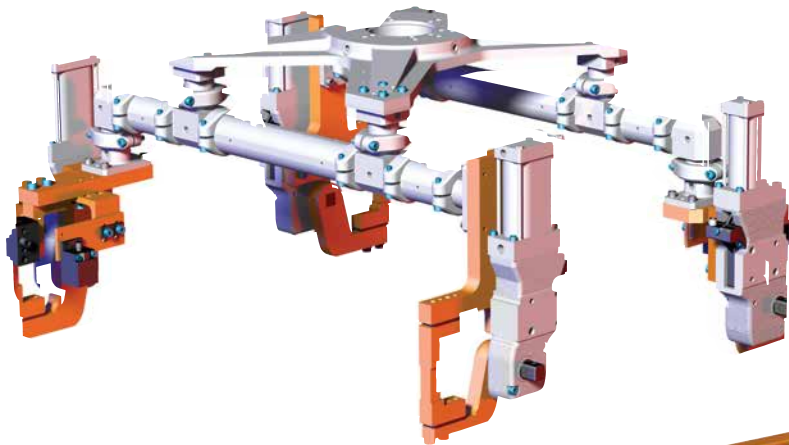


SpiderGrip Edge Mounting Components .....27



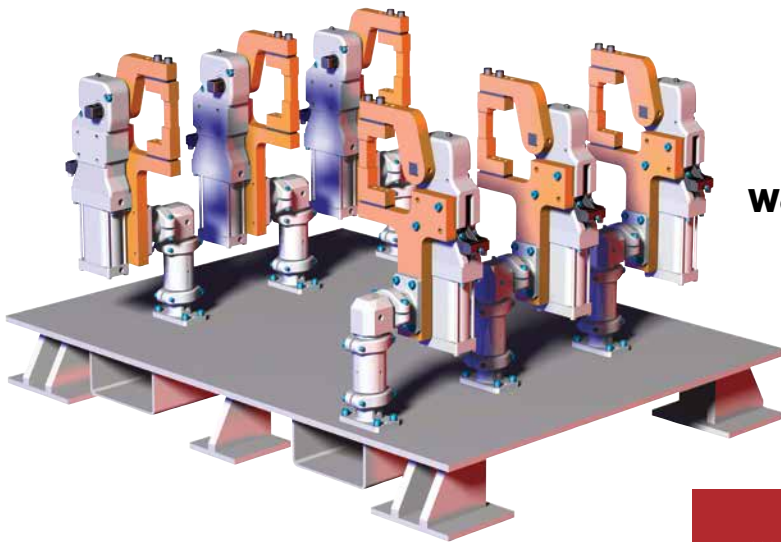
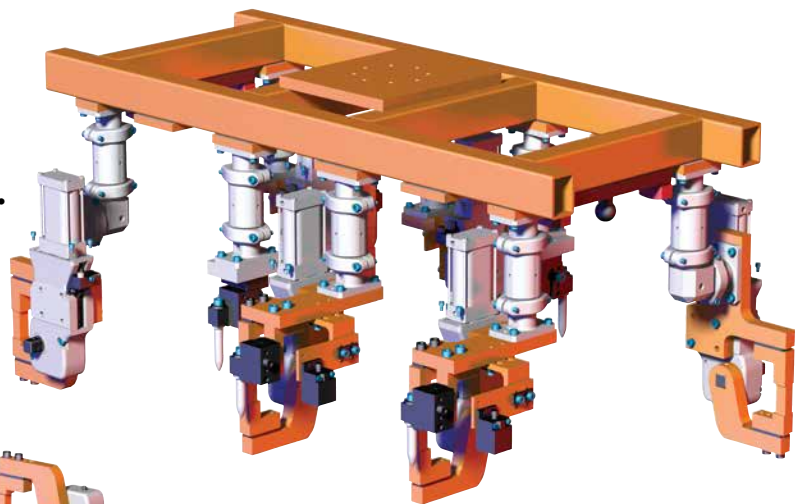
# SPIDERGRIP GEOMETRIC END EFFECTOR SYSTEM

Spidergrip Tooling Components | Typical Application Build Examples

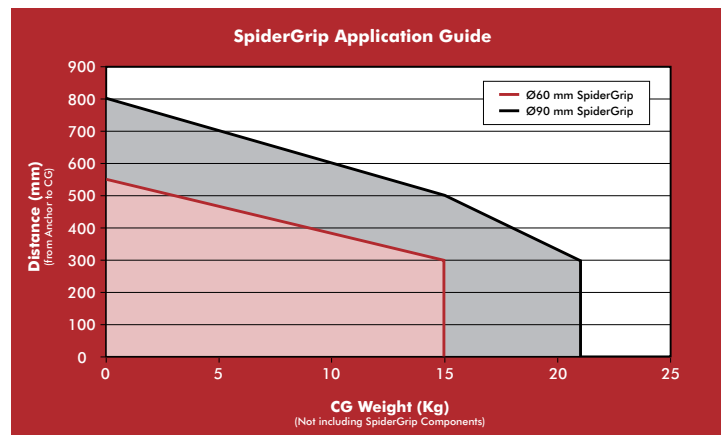


**Materials Handling End Effector Tooling System with RM4 Heavy Duty Mid-Mount Assembly (RM4-ST5).**

**Geometric End Effector Tooling System with Steel Frame Backbone.**



**Weld Fixture Tooling System**





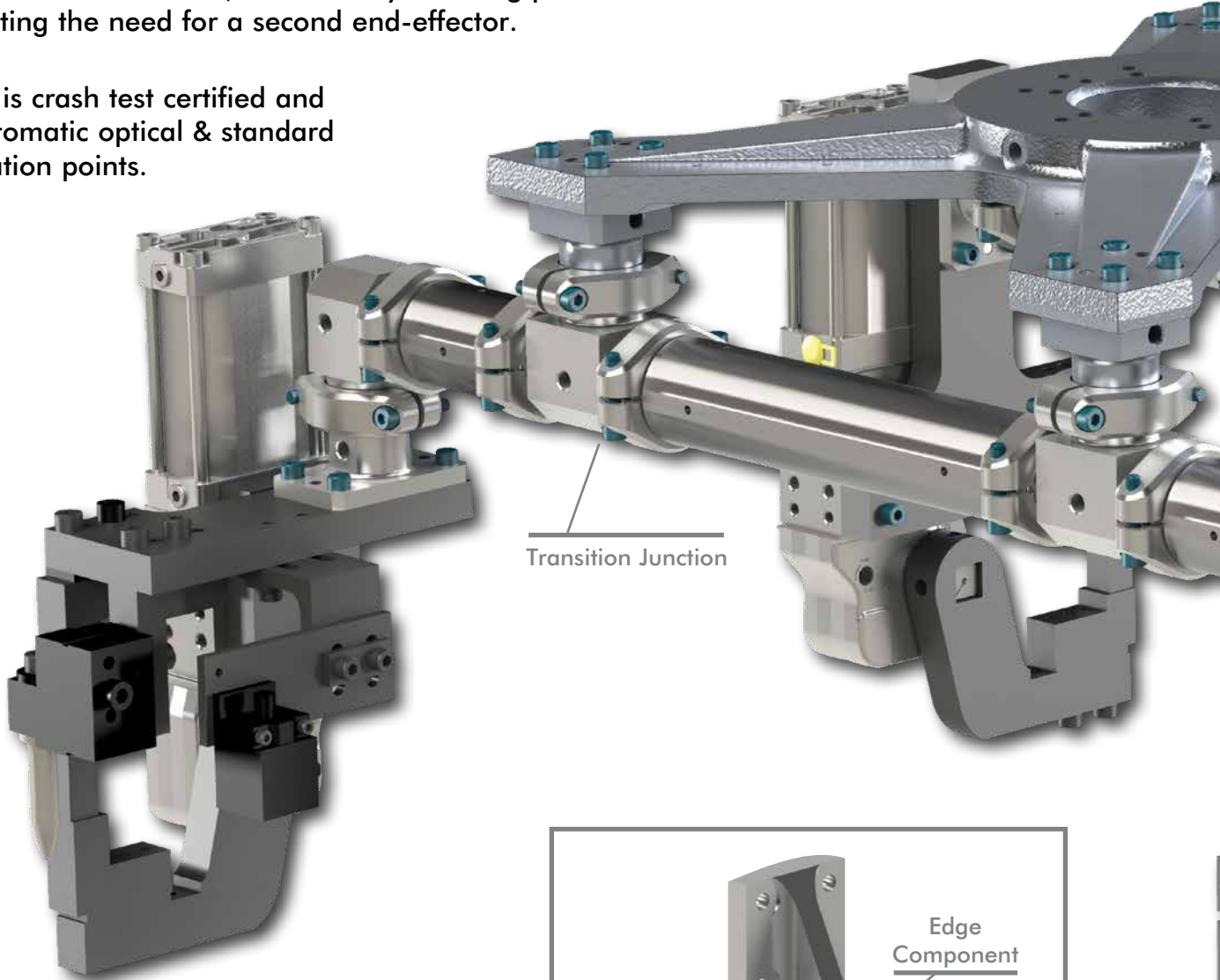
# SPIDERGRIP GEOMETRIC END EFFECTOR SYSTEM

## Product Overview



SpiderGrip Geometric End Effector Tooling System offers a standard cost effective solution by making it easy for each component to be replaced individually in the robotic cell, dramatically reducing production downtime and eliminating the need for a second end-effector.

This system is crash test certified and features automatic optical & standard CMM validation points.



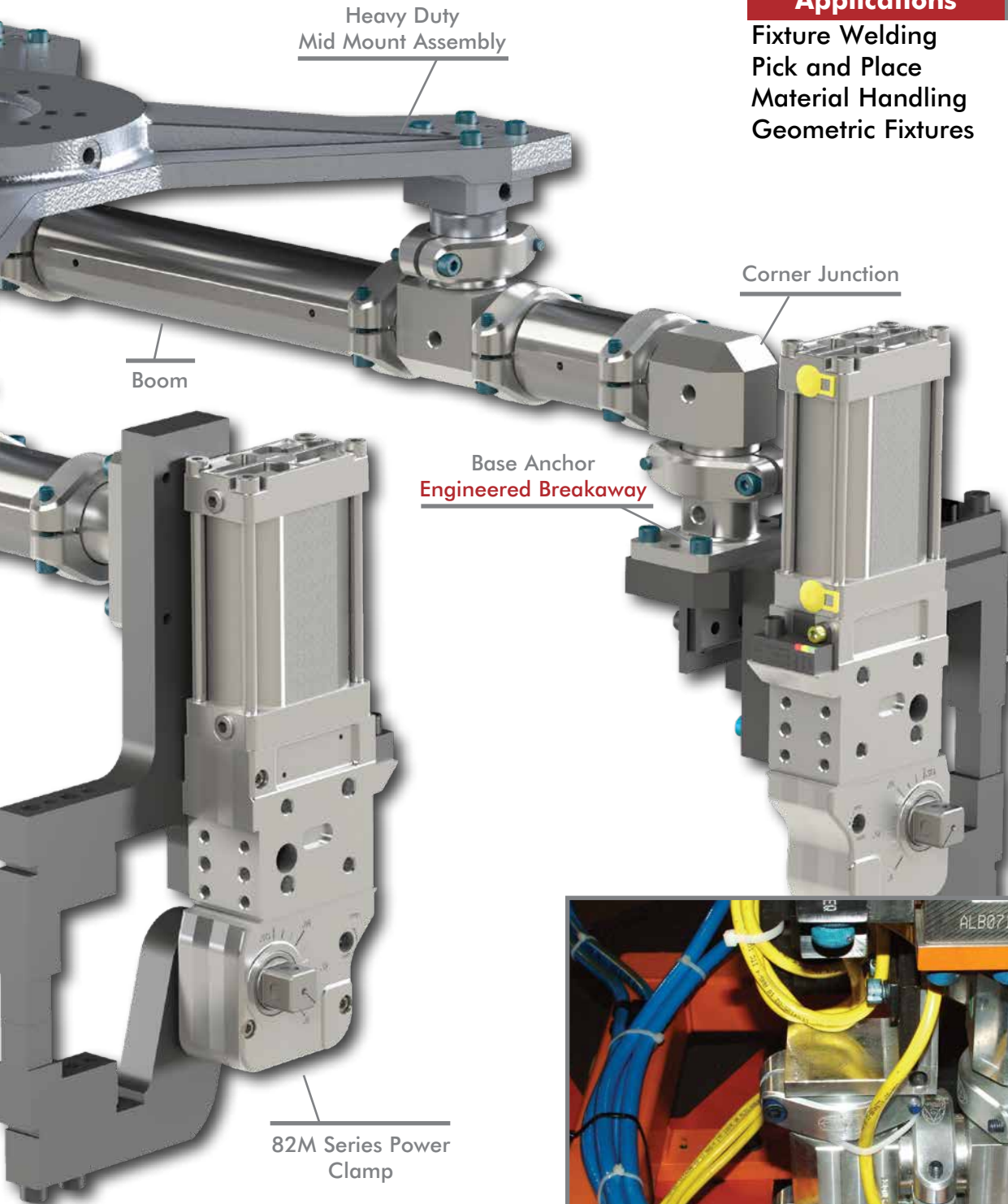
Transition Junction

Spidergrip modular components are easily configurable and offer high strength to weight ratios while maintaining dimensional accuracy after continuous minor collisions. The patented collar/key design and engineered breakaway base anchor provides quick crash recovery.



# SPIDERGRIP GEOMETRIC END EFFECTOR SYSTEM

Product Overview



## Most commonly used in:

Applications	Markets
Fixture Welding	Industrial
Pick and Place	Automotive
Material Handling	Aerospace
Geometric Fixtures	Appliance

