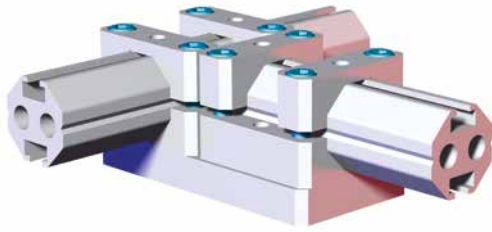


TCAM-30B-30B 30mm to 30mm Octagon (Micro) T-Clamp Bracket Assembly

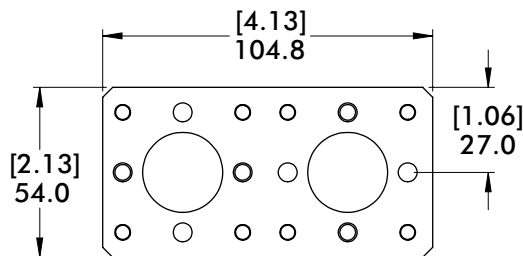
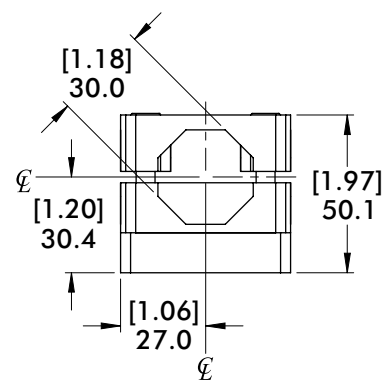
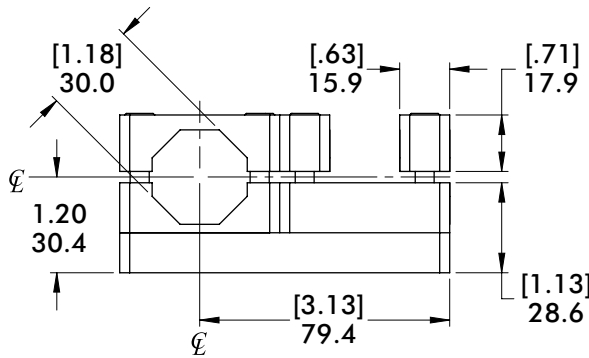
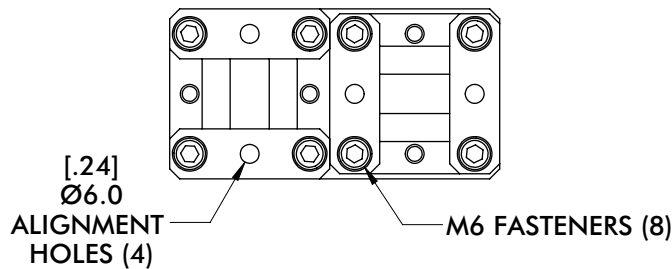
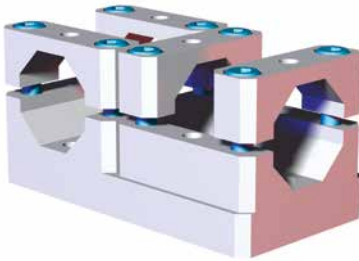


Specifications:

Max. Static Clamp Load:
102 Nm [75 ft-lb]
Material: Aluminum

Features:

- Connects (2) 30mm octagon extrusion perpendicular on the same plane.
- Lightweight, high-strength aluminum design.



Model Number	Weight
CPI-TCAM-30B-30B-M	.45 kg [.99 lb]

BODYBUILDER™ T-CLAMPS



BodyBuilder™ Octagonal Tooling | Dimensions | Technical Specifications

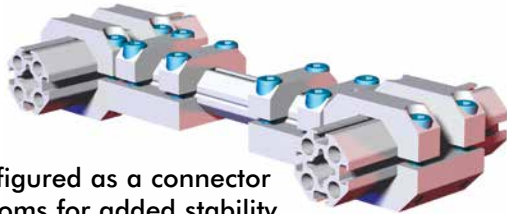
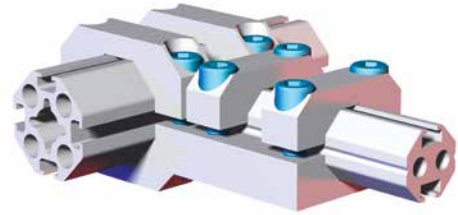
TCA-30B-45B 30mm to 45mm Octagon T-Clamp Bracket Assembly

Features:

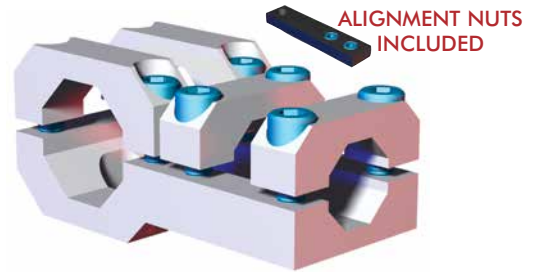
- Connects 30mm and 45mm octagon extrusion perpendicular on the same plane.
- Lightweight, high-strength aluminum design.

Specifications:

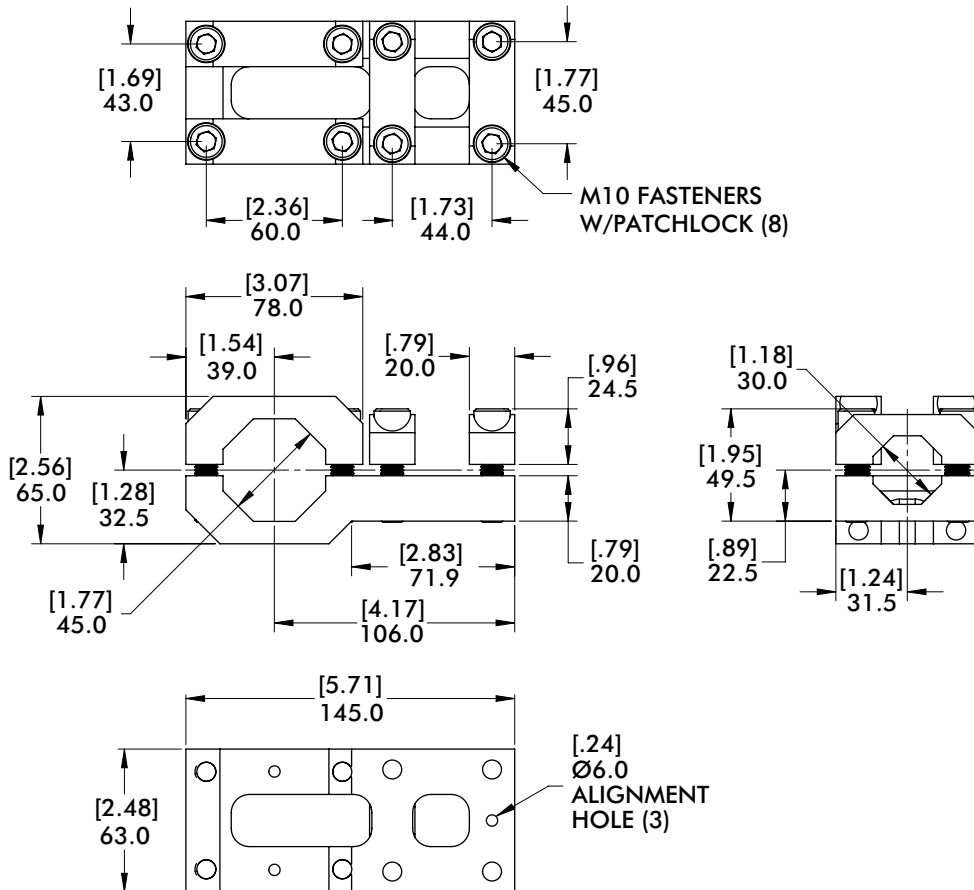
Max. Static Clamp Load:
 45mm: 475 Nm [350 ft-lb]
 30mm: 271 Nm [200 ft-lb]
Material: Aluminum



Can be configured as a connector between booms for added stability

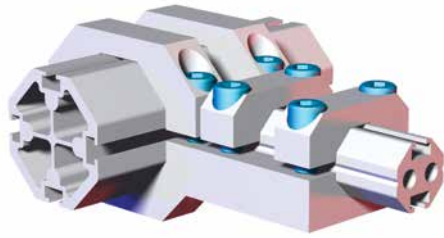


ALIGNMENT NUTS INCLUDED



Model Number	Weight
CPI-TCA-30B-45B	.80 kg [1.76 lb]

TCA-30B-60B 30mm to 60mm Octagon T-Clamp Bracket Assembly

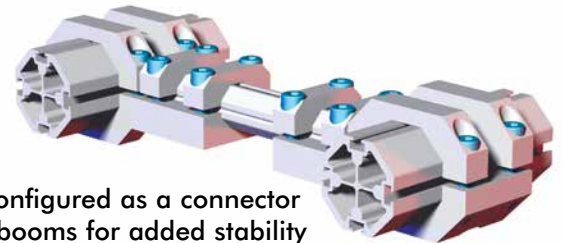
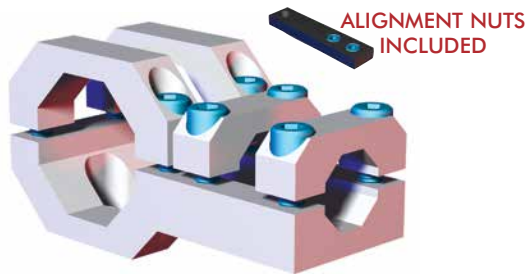


Specifications:

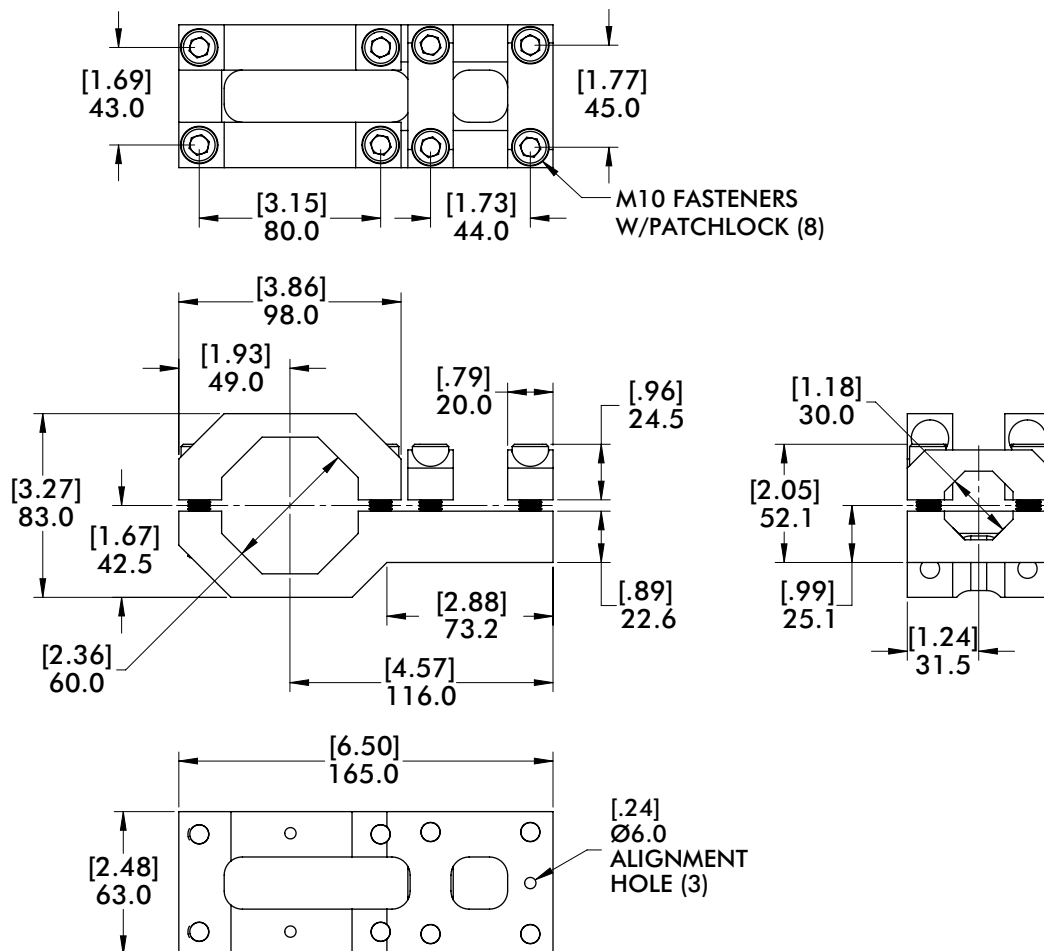
Max. Static Clamp Load:
 60mm: 746 Nm [550 ft-lb]
 30mm: 271 Nm [200 ft-lb]
Material: Aluminum

Features:

- Connects 30mm and 60mm octagon extrusion perpendicular on the same plane.
- Lightweight, high-strength aluminum design.



Can be configured as a connector between booms for added stability



Model Number	Weight
CPI-TCA-30B-60B	1.23 kg [2.71 lb]

BODYBUILDER™ T-CLAMPS

BodyBuilder™ Octagonal Tooling | Dimensions | Technical Specifications



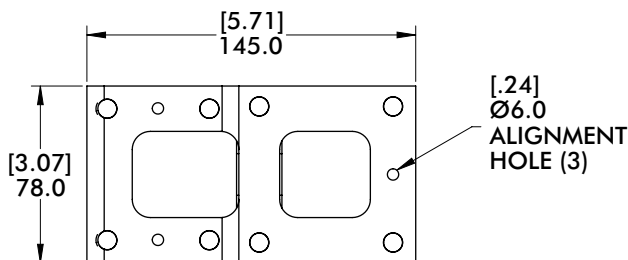
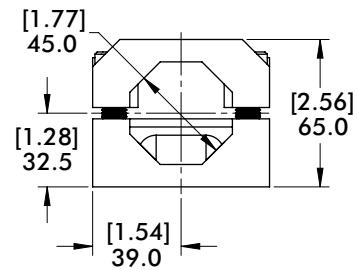
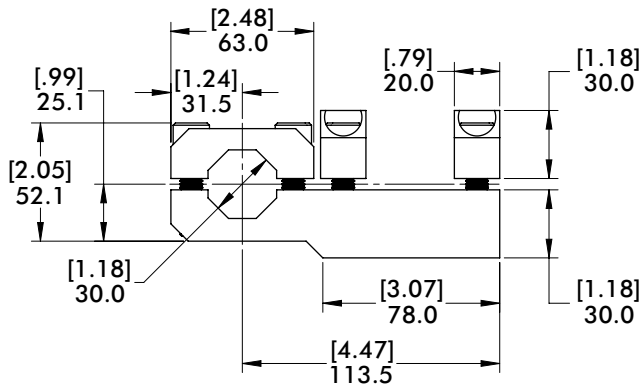
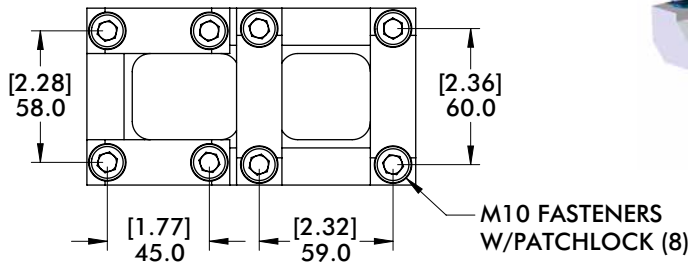
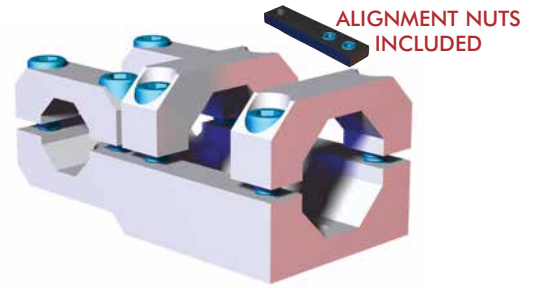
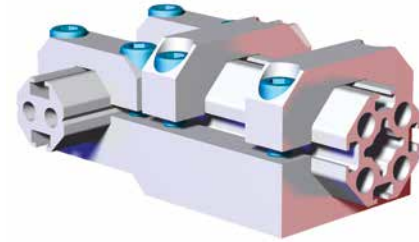
TCA-45B-30B 45mm to 30mm Octagon T-Clamp Bracket Assembly

Features:

- Connects 45mm and 30mm octagon extrusion perpendicular on the same plane.
- Lightweight, high-strength aluminum design.

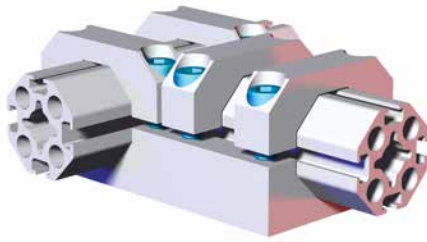
Specifications:

Max. Static Clamp Load:
 45mm: 475 Nm [350 ft-lb]
 30mm: 271 Nm [200 ft-lb]
Material: Aluminum



Model Number	Weight
CPI-TCA-45B-30B	.91 kg [2.02 lb]

TCA-45B-45B 45mm to 45mm Octagon T-Clamp Bracket Assembly



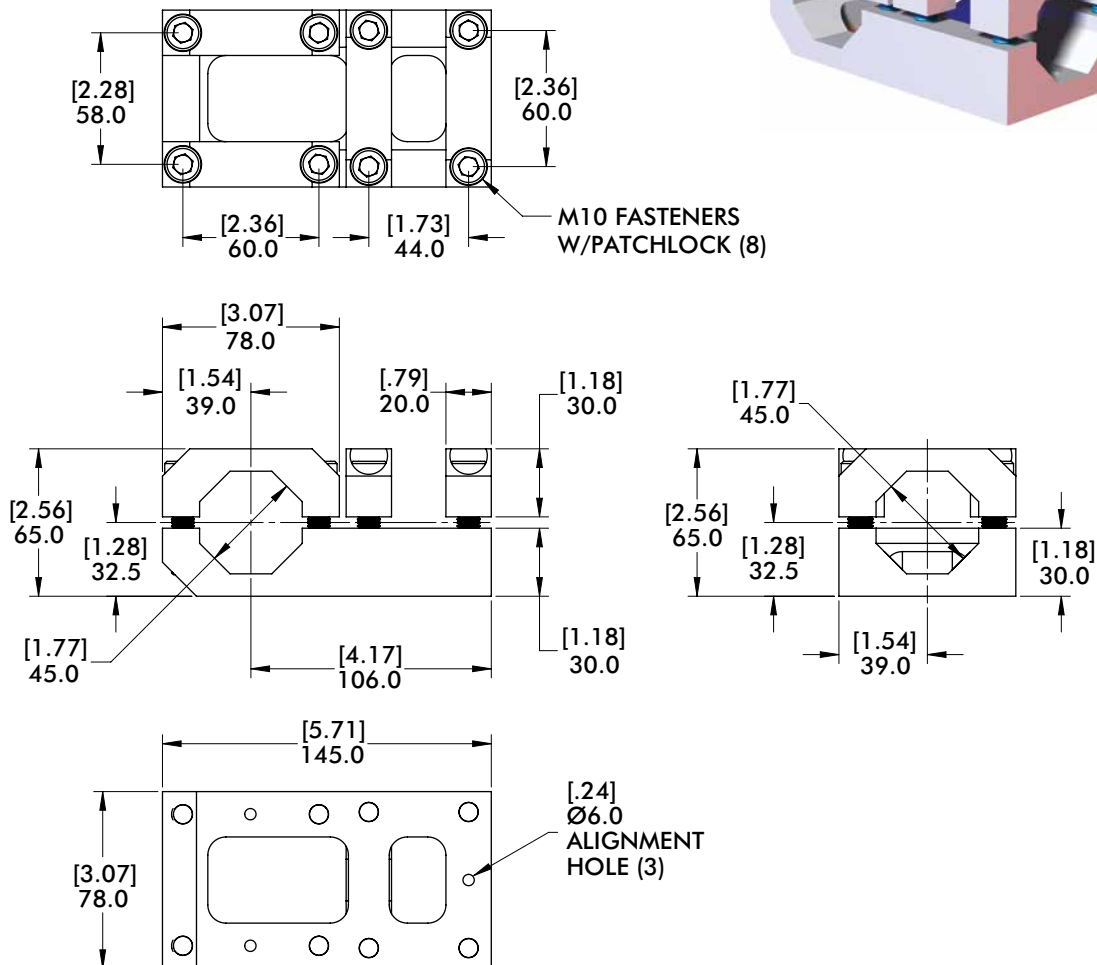
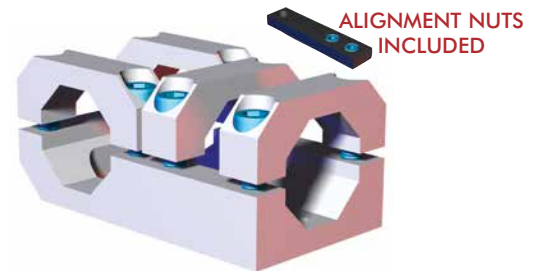
Specifications:

Max. Static Clamp Load:
45mm: 475 Nm [350 ft-lb]

Material: Aluminum

Features:

- Connects (2) 45mm octagon extrusion perpendicular on the same plane.
- Lightweight, high-strength aluminum design.



Model Number	Weight
CPI-TCA-45B-45B	.95 kg [2.09 lb]

BODYBUILDER™ T-CLAMPS

BodyBuilder™ Octagonal Tooling | Dimensions | Technical Specifications



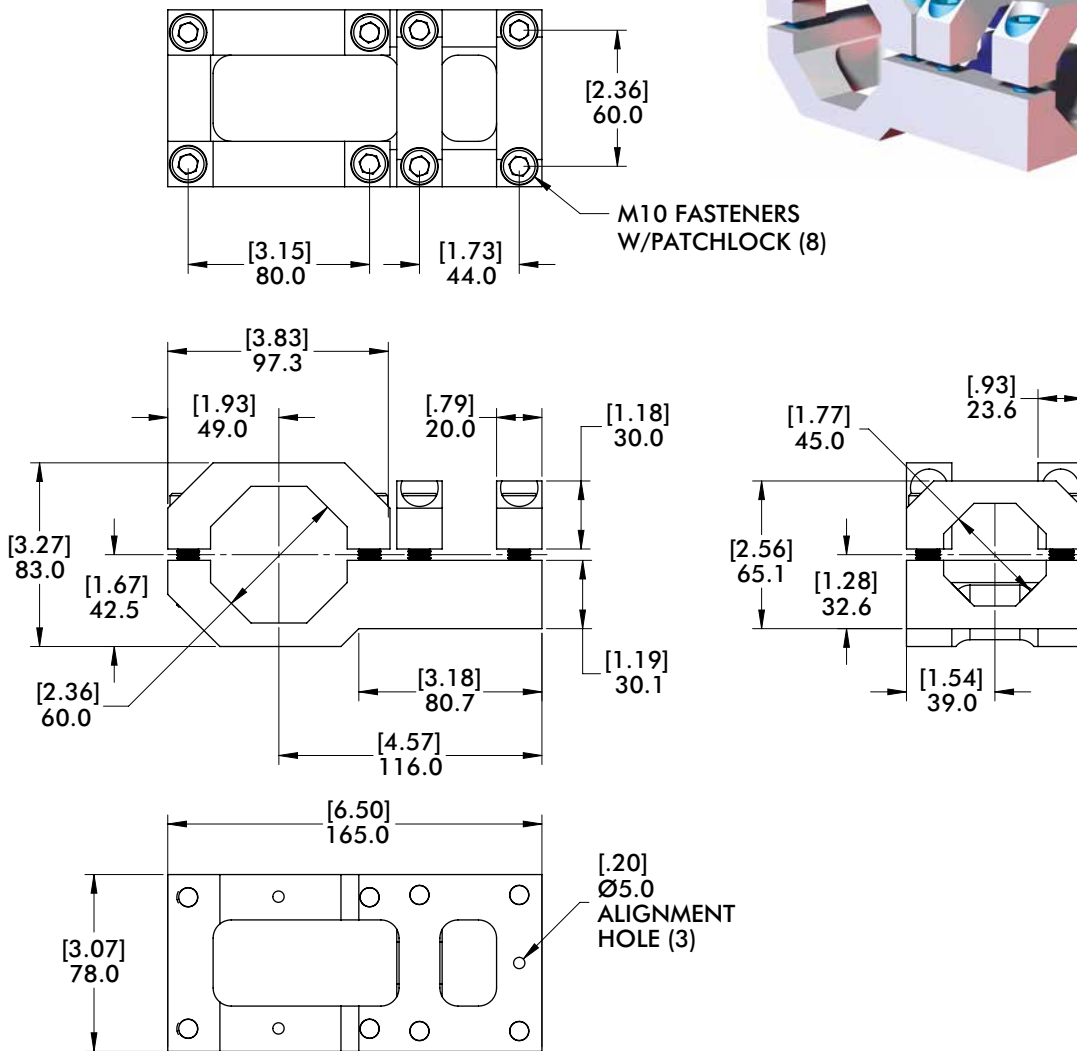
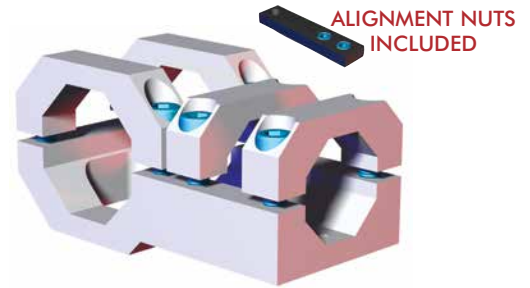
TCA-45B-60B 45mm to 60mm Octagon T-Clamp Bracket Assembly

Features:

- Connects 45mm and 60mm octagon extrusion perpendicular on the same plane.
- Lightweight, high-strength aluminum design.

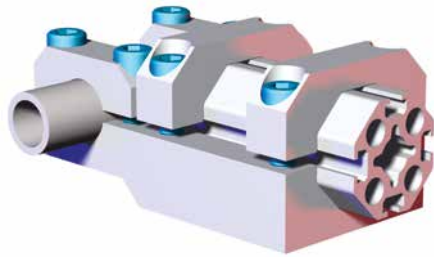
Specifications:

Max. Static Clamp Load:
 60mm: 746 Nm [550 ft-lb]
 45mm: 475 Nm [350 ft-lb]
Material: Aluminum



Model Number	Weight
CPI-TCA-45B-60B	1.21 kg [2.67lb]

TCA-45B-25M 45mm Octagon to 25mm Round T-Clamp Bracket Assembly

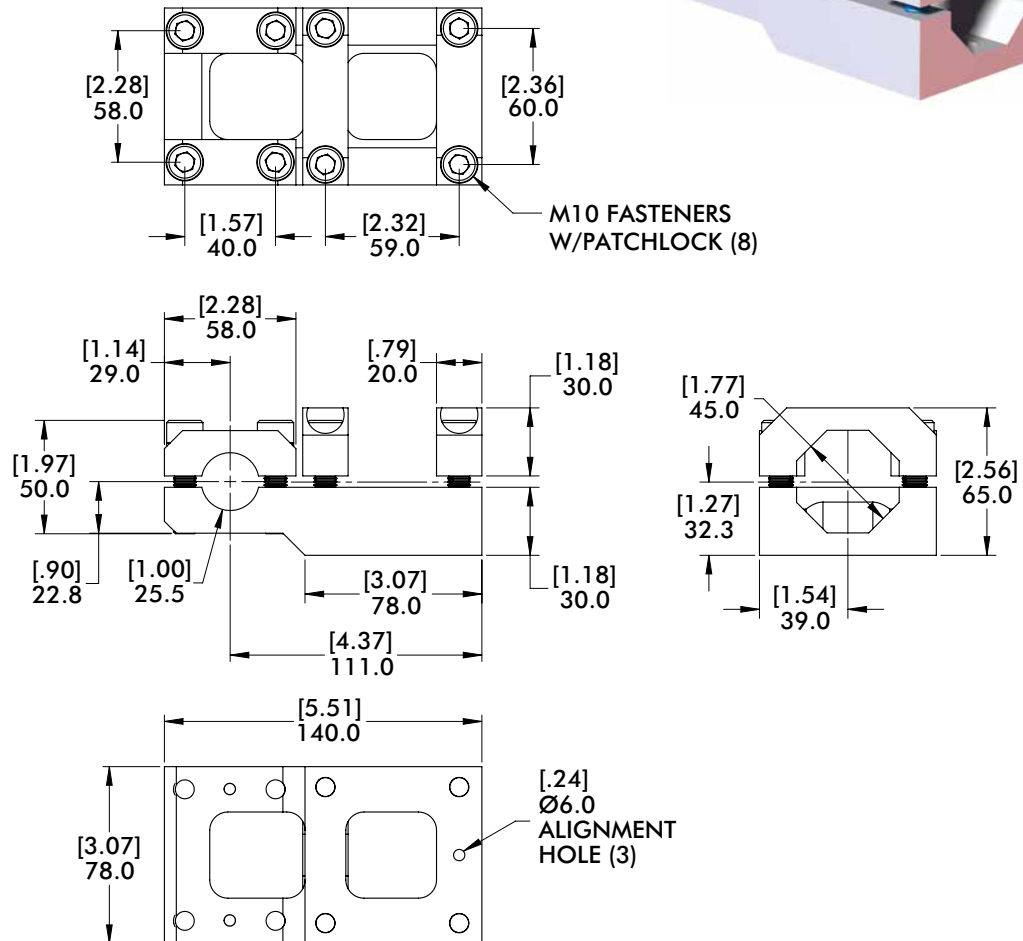
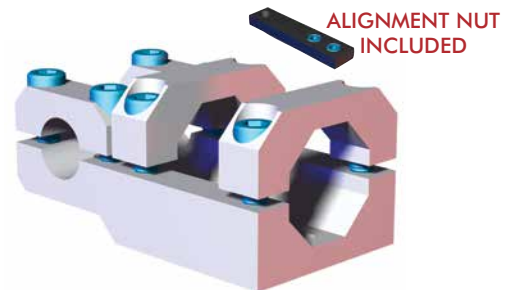


Specifications:

Max. Static Clamp Load:
 45mm: 475 Nm [350 ft-lb]
 25mm: 271 Nm [200 ft-lb]
Material: Aluminum

Features:

- Connects 45mm octagon and 25mm round perpendicular on the same plane.
- Lightweight, high-strength aluminum design.



Model Number	Weight
CPI-TCA-45B-25M	.89 kg [1.97lb]

BODYBUILDER™ T-CLAMPS



BodyBuilder™ Octagonal Tooling | Dimensions | Technical Specifications

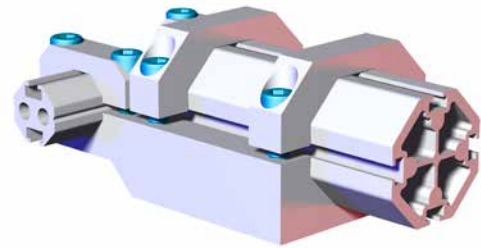
TCA-60B-30B 60mm to 30mm octagon T-Clamp Bracket Assembly

Features:

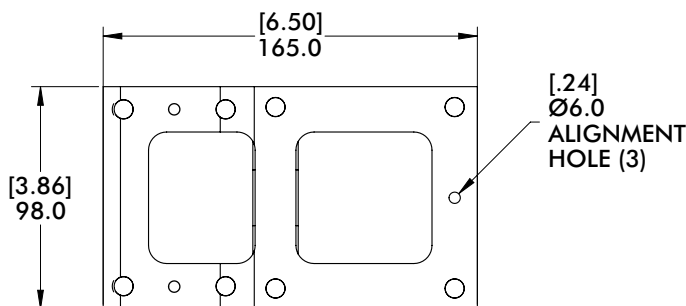
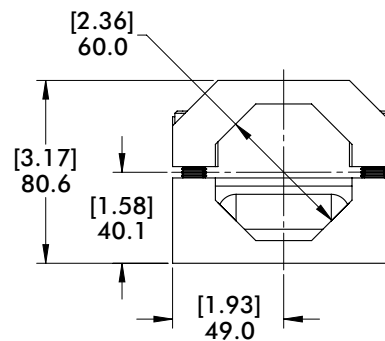
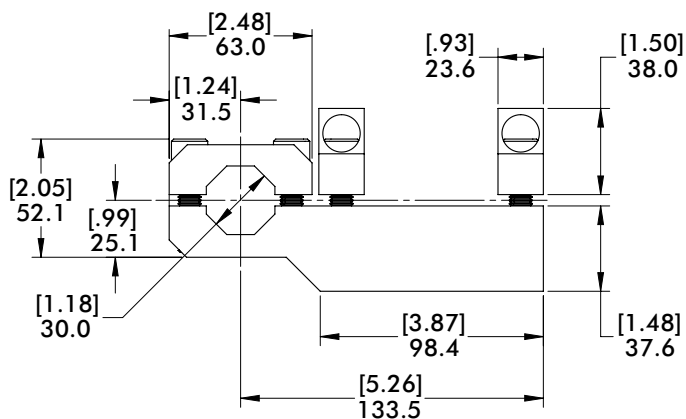
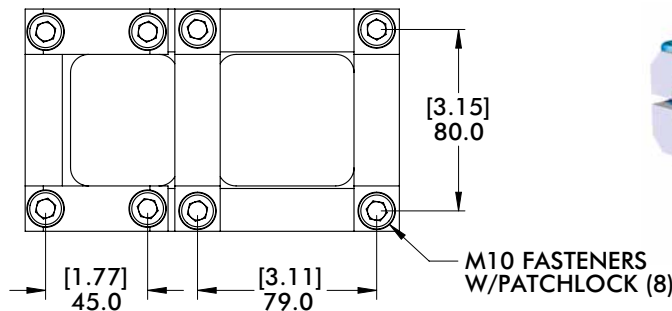
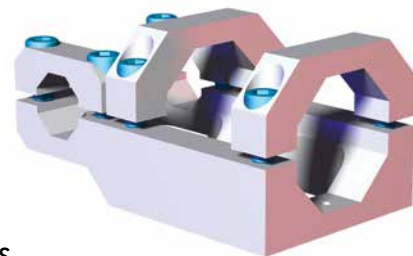
- Connects 60mm and 30mm octagon extrusion perpendicular on the same plane.
- Lightweight, high-strength aluminum design.

Specifications:

Max. Static Clamp Load:
 60mm: 746 Nm [550 ft-lb]
 30mm: 271 Nm [200 ft-lb]
Material: Aluminum



ALIGNMENT NUTS INCLUDED



Model Number	Weight
CPI-TCA-60B-30B	1.32 kg [2.91 lb]

TCA-60B-45B 60mm to 45mm octagon T-Clamp Bracket Assembly



Specifications:

Max. Static Clamp Load:

60mm: 746 Nm [550 ft-lb]

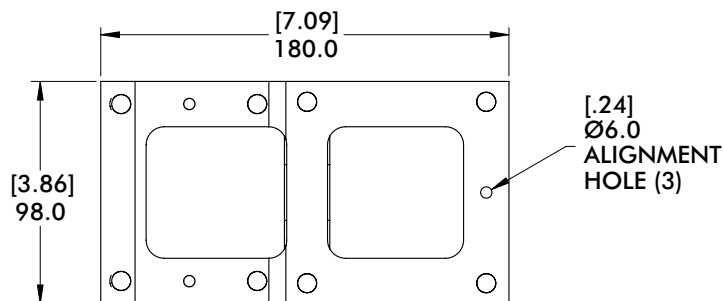
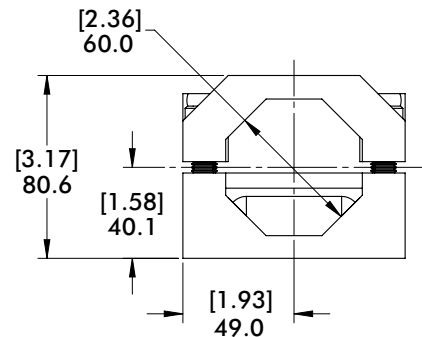
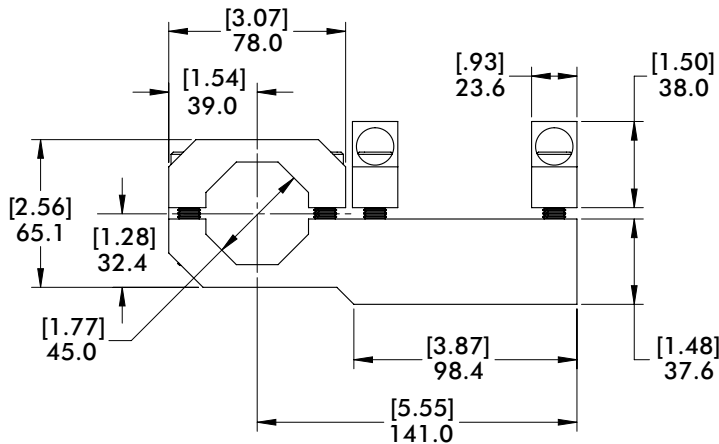
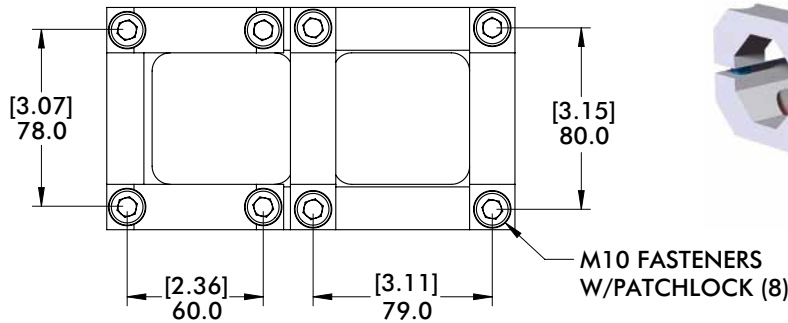
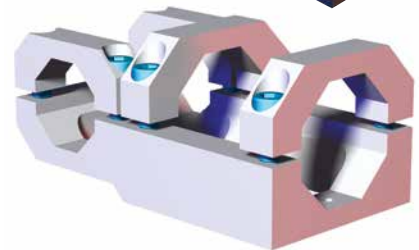
45mm: 475 Nm [350 ft-lb]

Material: Aluminum

Features:

- Connects 60mm and 45mm octagon extrusion perpendicular on the same plane.
- Lightweight, high-strength aluminum design.

ALIGNMENT NUTS INCLUDED



Model Number	Weight
CPI-TCA-60B-45B	1.45 kg [3.20 lb]

BODYBUILDER™ T-CLAMPS



BodyBuilder™ Octagonal Tooling | Dimensions | Technical Specifications

TCA-60B-60B 60mm to 60mm octagon T-Clamp Bracket Assembly

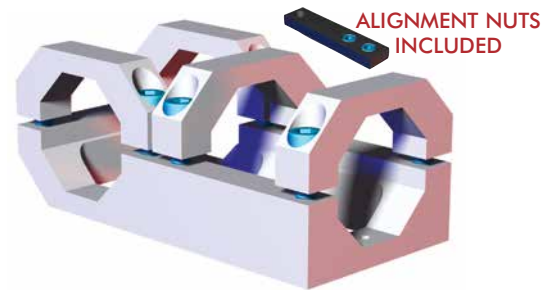
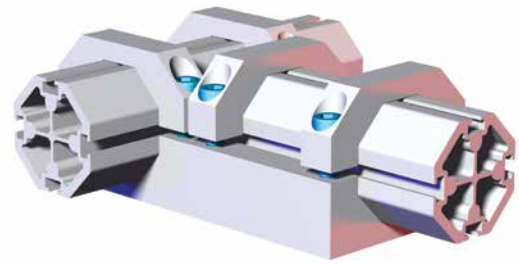
Features:

- Connects (2) 60mm octagon extrusions perpendicular on the same plane.
- Lightweight, high-strength aluminum design.

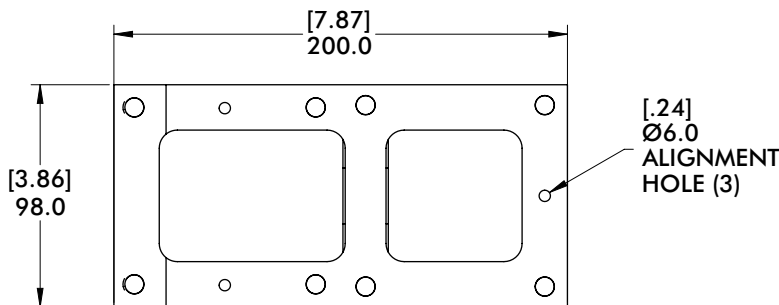
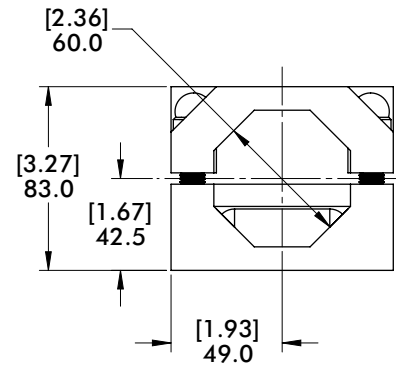
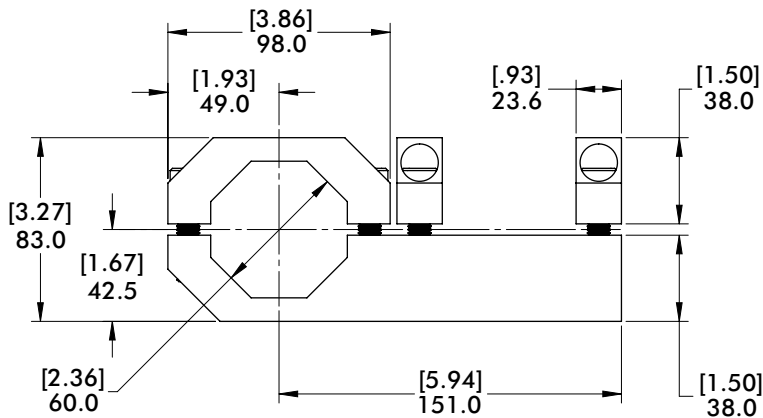
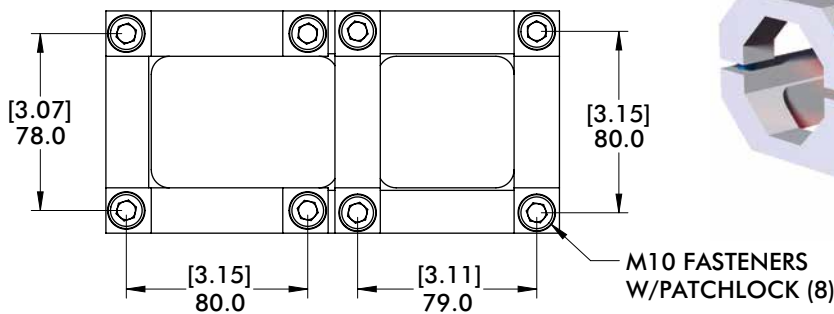
Specifications:

Max. Static Clamp Load:
60mm: 746 Nm [550 ft-lb]

Material: Aluminum

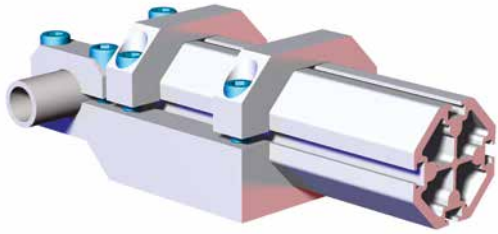


ALIGNMENT NUTS INCLUDED



Model Number	Weight
CPI-TCA-60B-60B	1.77 kg [3.90 lb]

TCA-60B-25M 60mm Octagon to 25mm Round T-Clamp Bracket Assembly

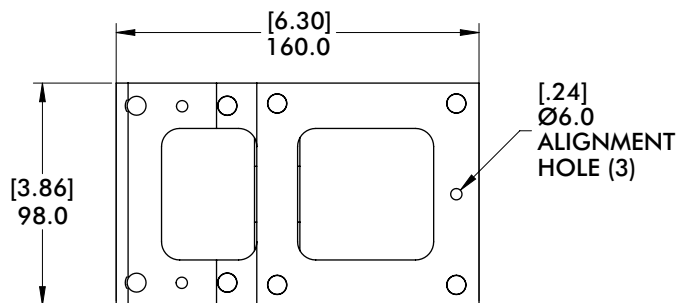
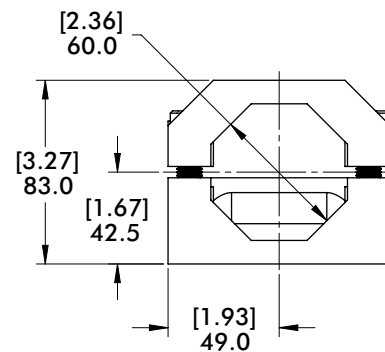
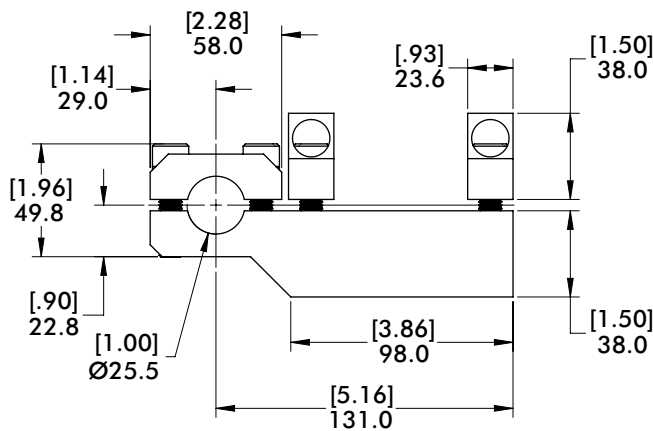
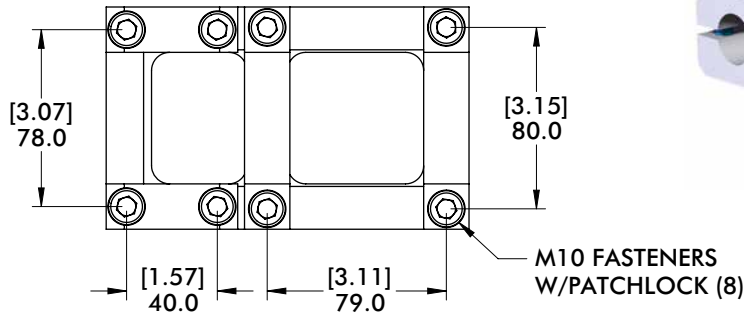
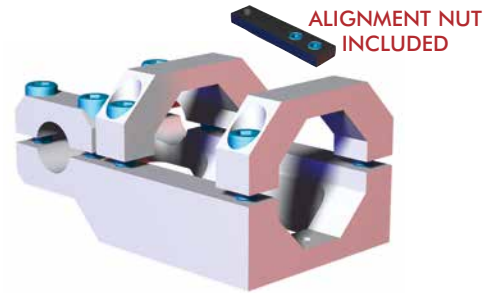


Specifications:

Max. Static Clamp Load:
 60mm: 746 Nm [550 ft-lb]
 30mm: 271 Nm [200 ft-lb]
Material: Aluminum

Features:

- Connects 60mm octagon and 25mm round perpendicular on the same plane.
- Lightweight, high-strength aluminum design.



Model Number	Weight
CPI-TCA-60B-25M	1.25 kg [2.76 lb]

BODYBUILDER™ T-CLAMPS

BodyBuilder™ Octagonal Tooling | Dimensions | Technical Specifications



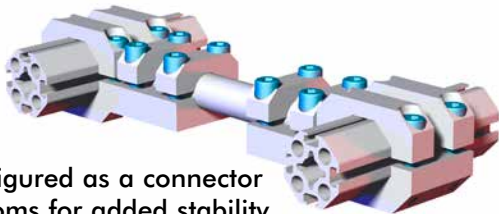
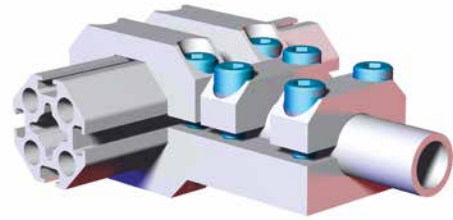
TCA-25M-45B 25mm Round to 45mm Octagon T-Clamp Brackets Assembly

Features:

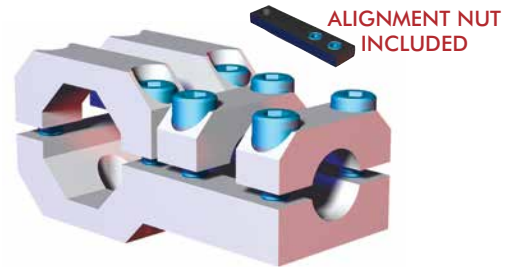
- Connects 25mm round and 45mm octagon perpendicular on the same plane.
- Lightweight, high-strength aluminum design.

Specifications:

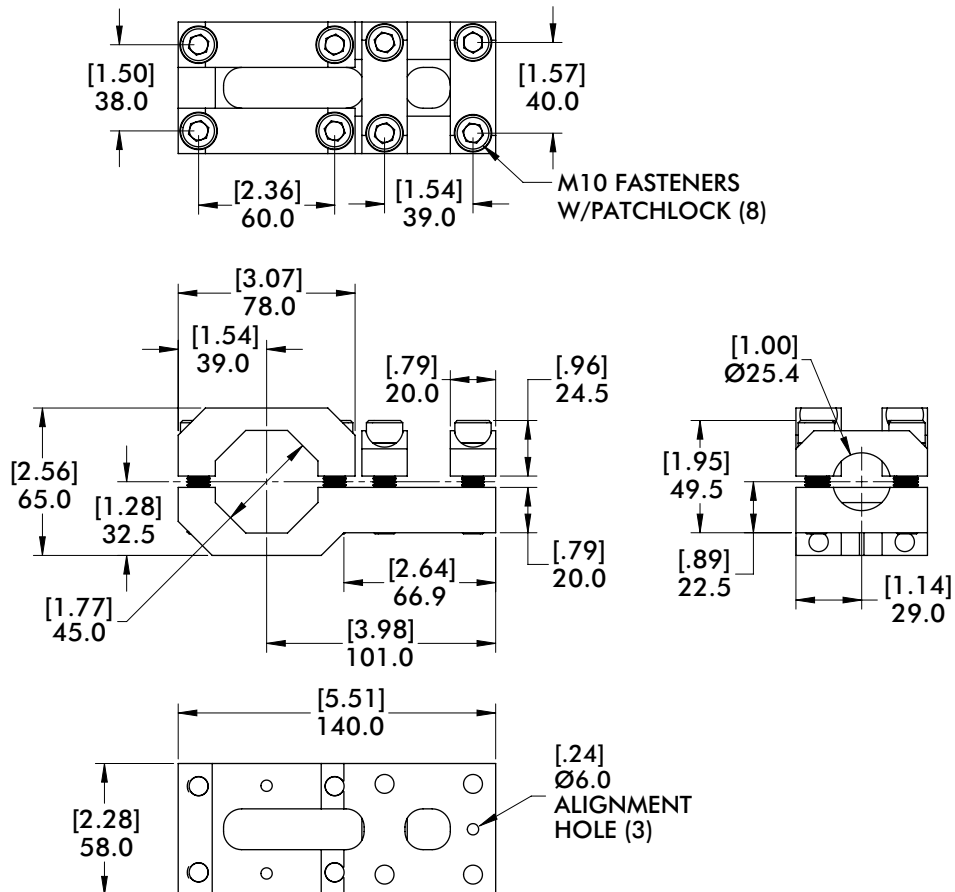
Max. Static Clamp Load:
 45mm: 475 Nm [350 ft-lb]
 25mm: 271 Nm [200 ft-lb]
Material: Aluminum



Can be configured as a connector between booms for added stability

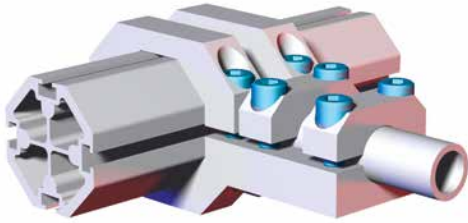


ALIGNMENT NUT INCLUDED



Model Number	Weight
CPI-TCA-25M-45B	.57 kg [1.26 lb]

TCA-25M-60B 25mm Round to 60mm Octagon T-Clamp Bracket Assembly

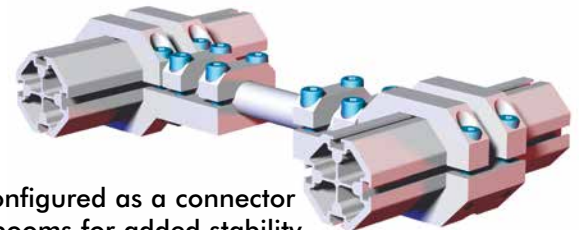
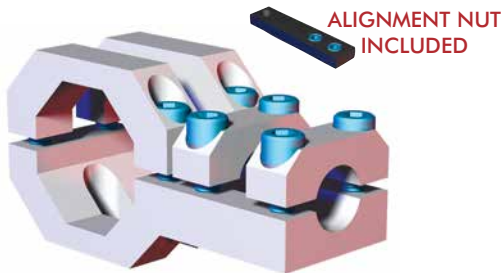


Specifications:

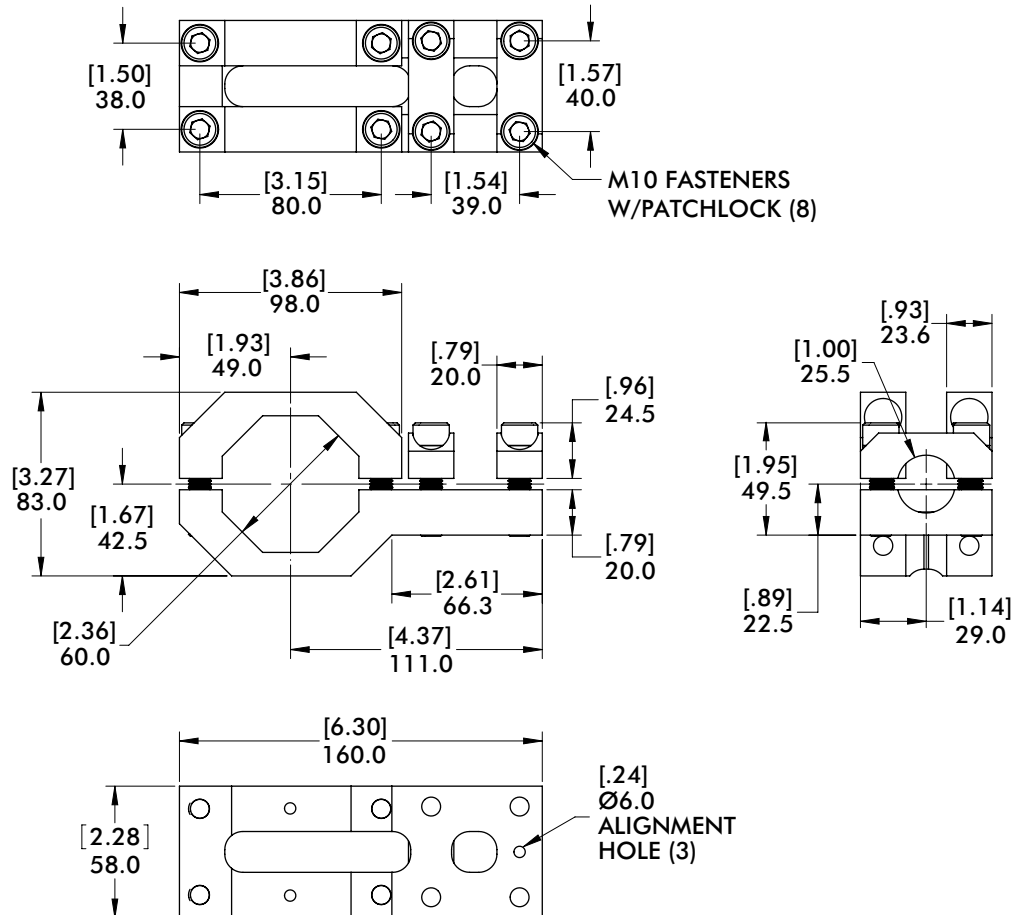
Max. Static Clamp Load:
 60mm: 746 Nm [550 ft-lb]
 25mm: 271 Nm [200 ft-lb]
Material: Aluminum

Features:

- Connects 25mm round and 60mm octagon perpendicular on the same plane.
- Lightweight, high-strength aluminum design.



Can be configured as a connector between booms for added stability



Model Number	Weight
CPI-TCA-25M-60B	.85 kg [1.87 lb]

BODYBUILDER™ ELBOWS

BodyBuilder™ Octagonal Tooling | Dimensions | Technical Specifications



45° Angular Boom Clamp Brackets

Features:

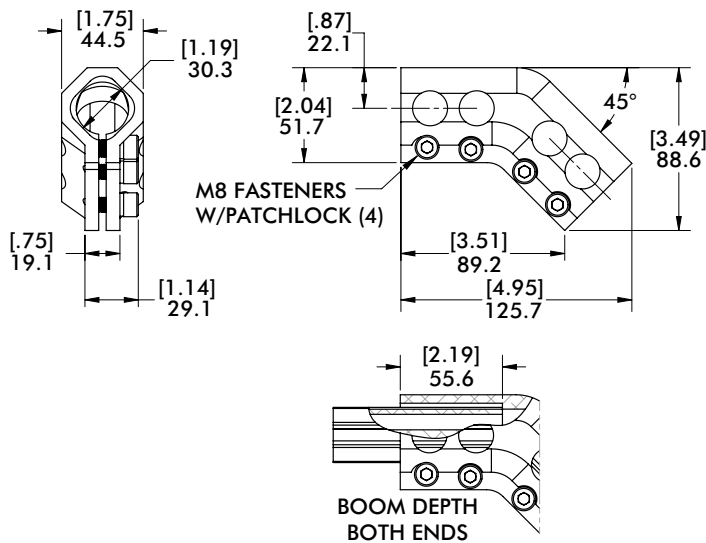
- Mounts (2) Bodybuilder extrusion booms inline at a 45° angle.

Specifications:

Material: Aluminum

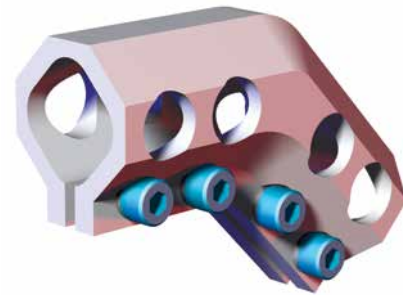


DC-3030B-45 30mm to 30mm 45° External Boom Clamp Brackets



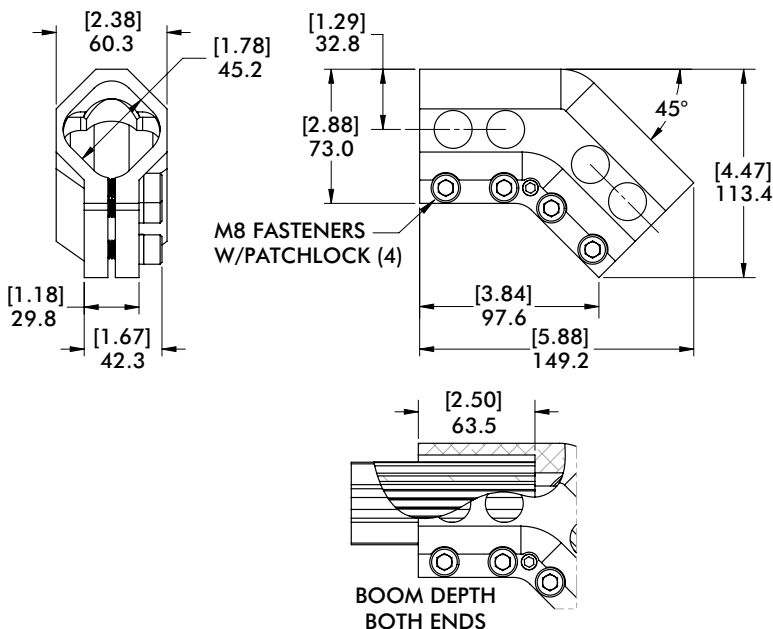
Specifications:

Max. Static Clamp Load:
271Nm [200 ft-lb]



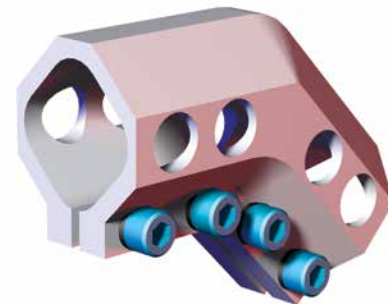
Model Number	Weight
CPI-DC-3030B-45	.30 kg [.66 lb]

DC-4545B-45 45mm to 45mm 45° Angular Boom Clamp Brackets



Specifications:

Max. Static Clamp Load:
475 Nm [350 ft-lb]



Model Number	Weight
CPI-DC-4545B-45	.64 kg [1.4 lb]

DC-6060B-45 60mm to 60mm 45° Angular Boom Clamp Brackets



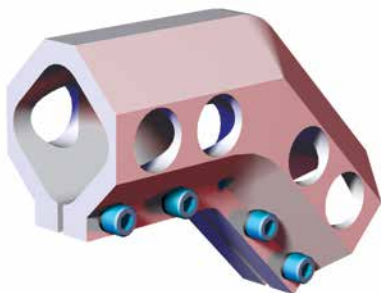
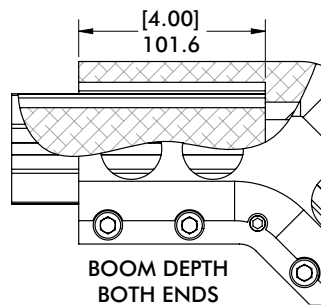
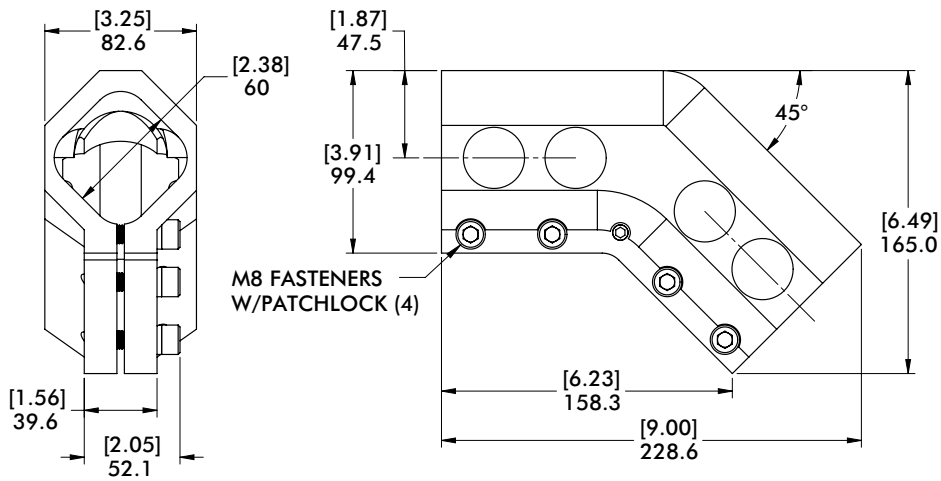
Specifications:

Max. Static Clamp Load:
746 Nm [550 ft-lb]

Material: Aluminum

Features:

- Mounts (2) Bodybuilder extrusion booms inline at a 45° angle.



Model Number	Weight
CPI-DC-6060B-45	1.74 kg [3.8 lb]

BODYBUILDER™ MID FLANGE CLAMPS



BodyBuilder™ Octagonal Tooling | Dimensions | Technical Specifications

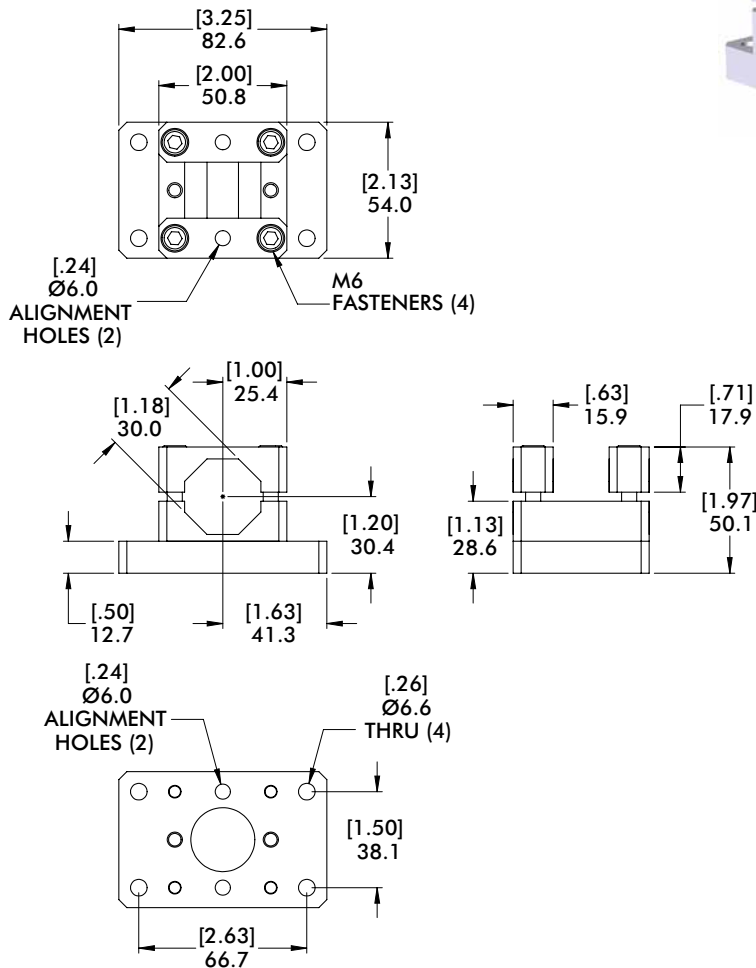
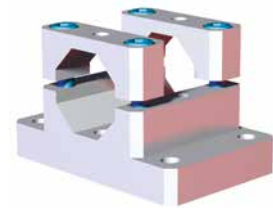
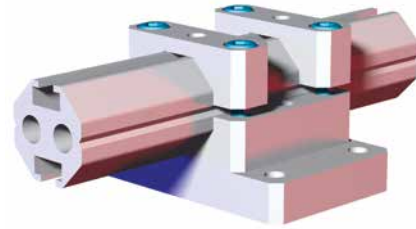
CLM-30B-152F-90 30mm Mid Flange Clamp Mount

Features:

- Mounts 30mm extrusion parallel to the mounting surface.
- Can be used as robot interface when quick-change connector is not required.

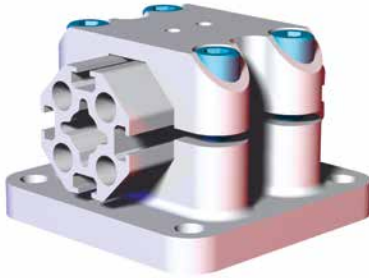
Specifications:

Max. Static Clamp Load:
102 Nm [75 ft-lb]
Material: Cast Aluminum



Model Number	Weight
CPI-CLM-30B-152F-90	0.28 kg [.61 lb]

TBC-45 45mm Mid Flange Clamp Mount



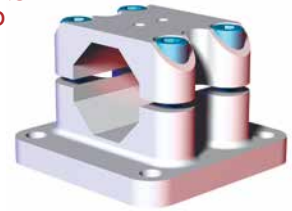
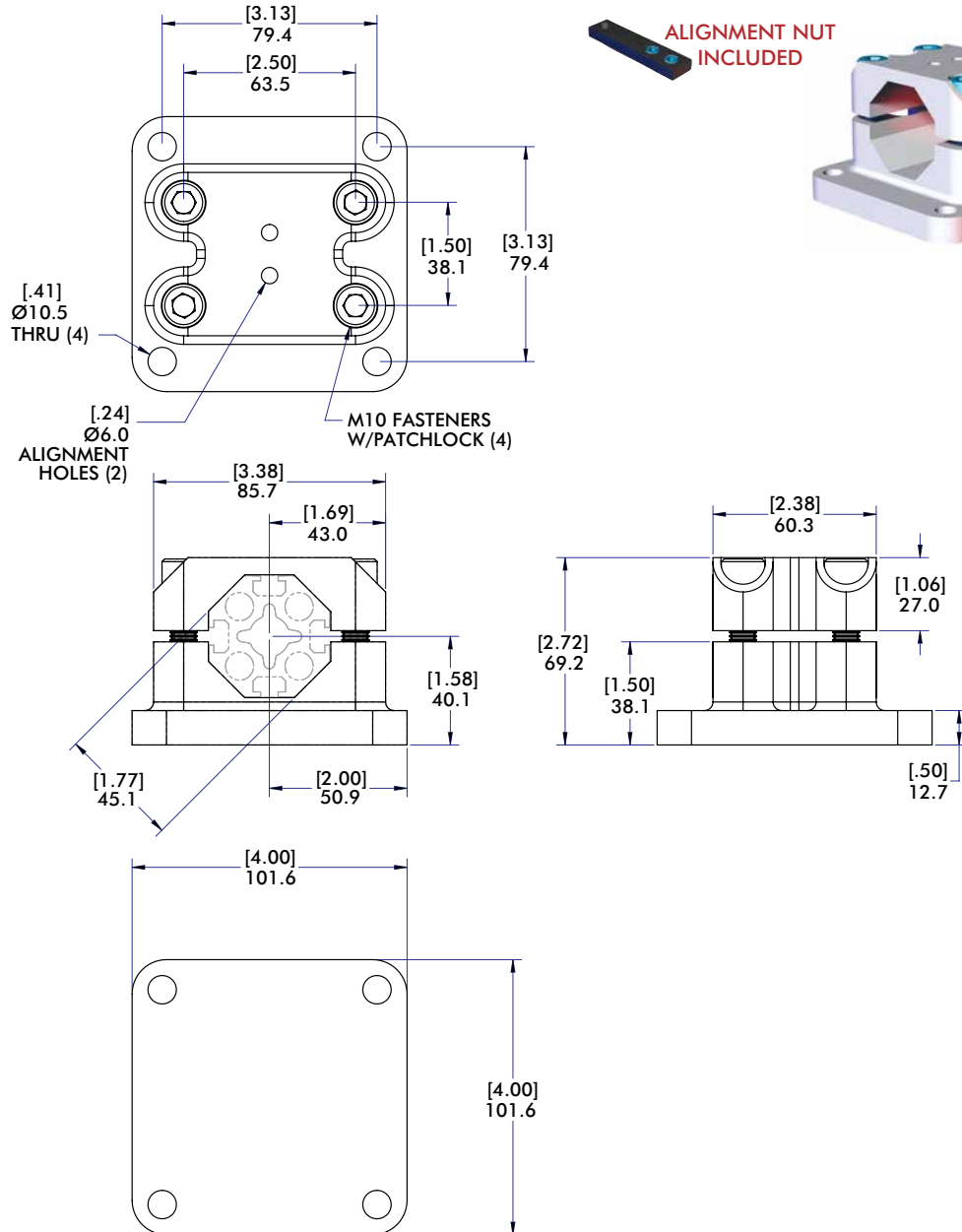
Specifications:

Max. Static Clamp Load:
475 Nm [350 ft-lb]

Material: Aluminum

Features:

- Mounts 45mm extrusion parallel to the mounting surface.
- Can be used as robot interface when quick-change connector is not required.



Model Number	Weight
TBC-45-00	0.79 kg [1.74 lb]

BODYBUILDER™ MID FLANGE CLAMPS



BodyBuilder™ Octagonal Tooling | Dimensions | Technical Specifications

TBC-60 60mm Mid Flange Clamp Mount

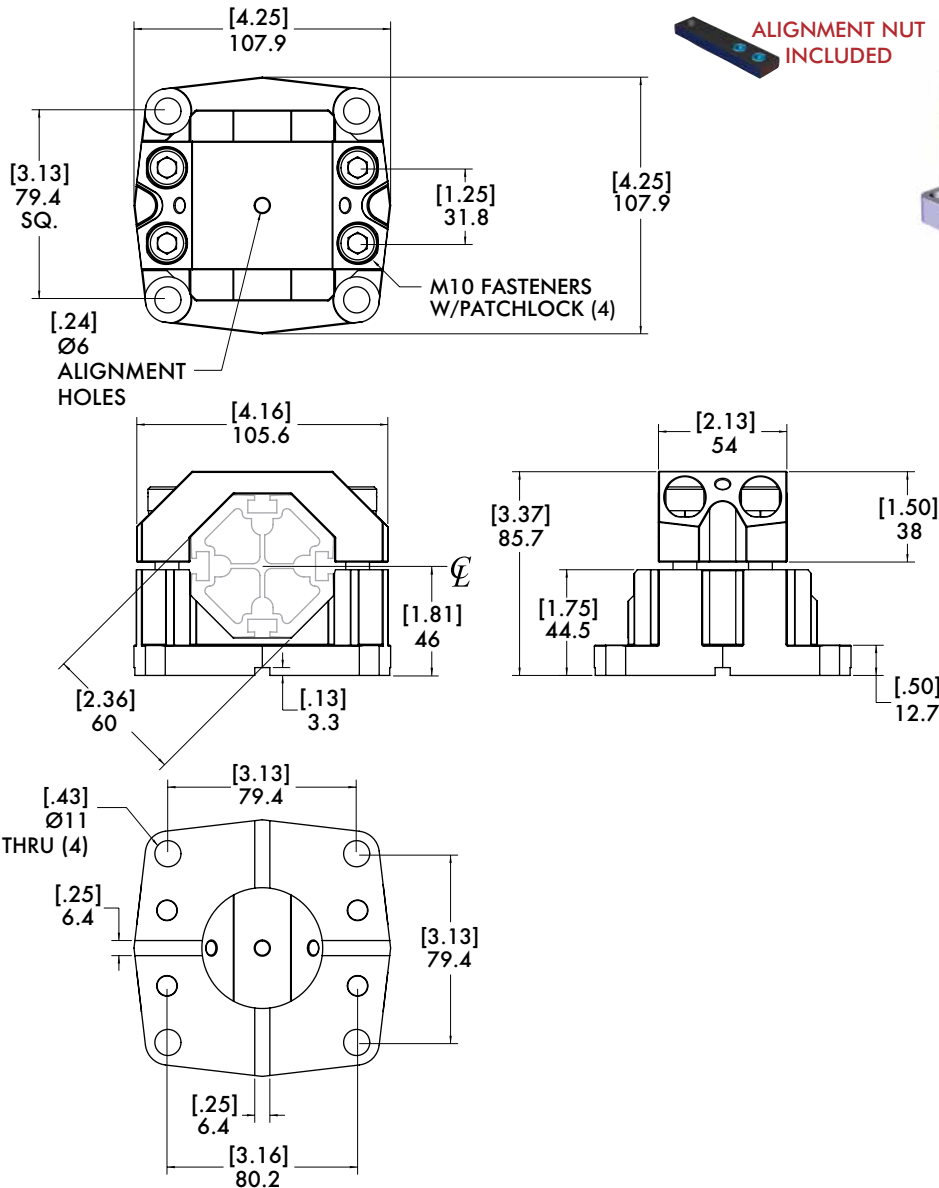
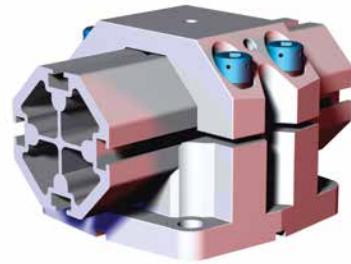
Features:

- Mounts 60mm extrusion parallel to the mounting surface.
- Can be used to mount to robot with an interface plate.
- Cross-key design provides added strength for high-torque applications when used in conjunction with a slot and key mechanism.

Specifications:

Max. Static Clamp Load:
746 Nm [550 ft-lb]

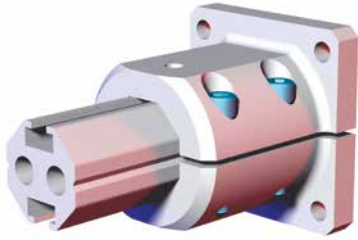
Material: Cast Aluminum



Cross Key sold separately: (2) x 540-25388

Model Number	Weight
TBC-60-00	0.92 kg [2.02 lb]

CLM-30B-20F 30mm End Flange Clamp Mount



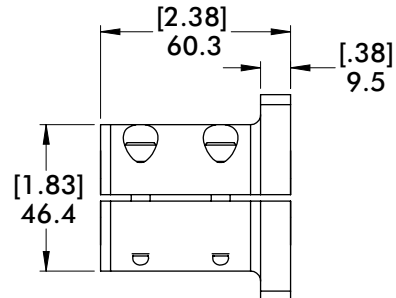
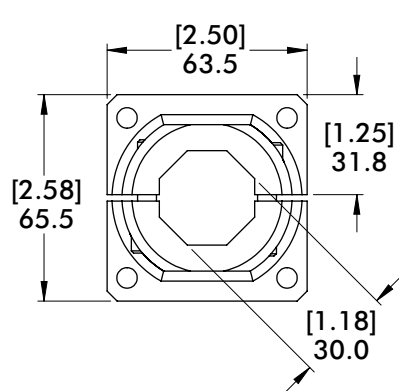
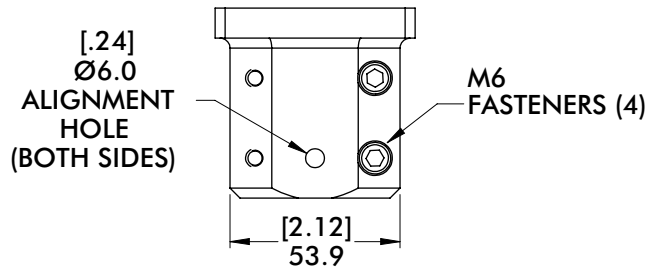
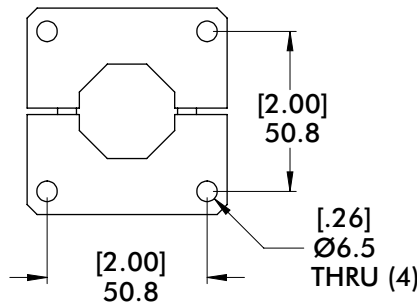
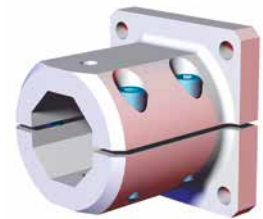
Specifications:

Max. Static Clamp Load:
102 Nm [75 ft-lb]

Material: Aluminum

Features:

- Mounts 30mm extrusion 90° to the mounting surface.
- Can be used as robot interface when quick-change connector is not required.



Model Number	Weight
CPI-CLM-30B-20F	.29 kg [.64 lb]

BODYBUILDER™ END FLANGE CLAMPS

BodyBuilder™ Octagonal Tooling | Dimensions | Technical Specifications



BECC-60 60mm End Flange Clamp Mount

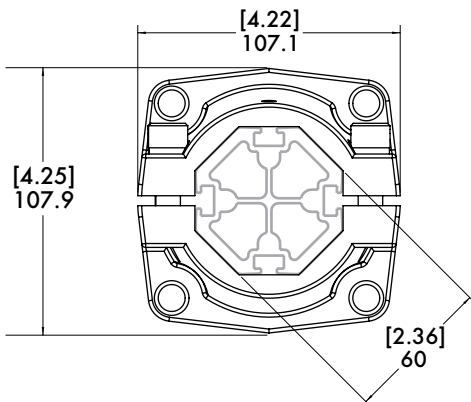
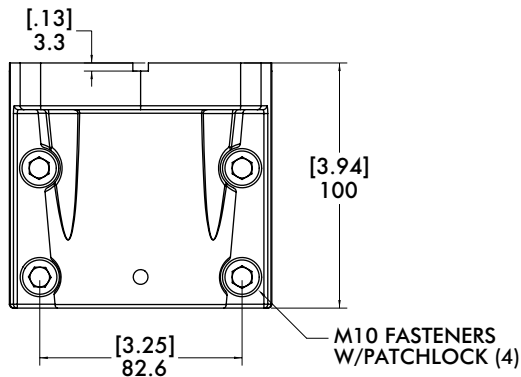
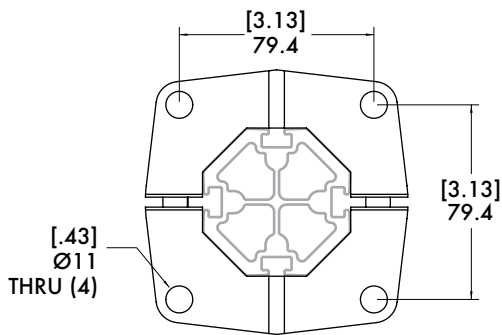
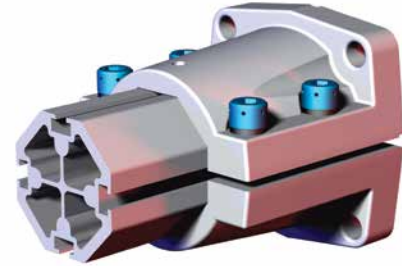
Features:

- Mounts 60mm extrusion 90° to the mounting surface.
- Can be used as robot interface when quick-change connector is not required.
- Cross-key design provides added strength for high-torque applications when used in conjunction with a slot and key mechanism.

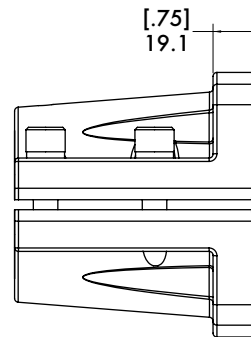
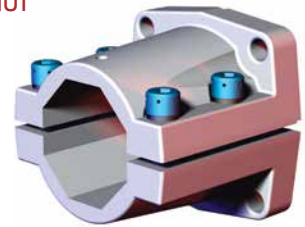
Specifications:

Max. Static Clamp Load:
746 Nm [550 ft-lb]

Material: Cast Aluminum



ALIGNMENT NUT
INCLUDED



Cross Key sold separately: (2) x 540-25388

Model Number	Weight
BECC-60-00	1.21 kg [2.67 lb]