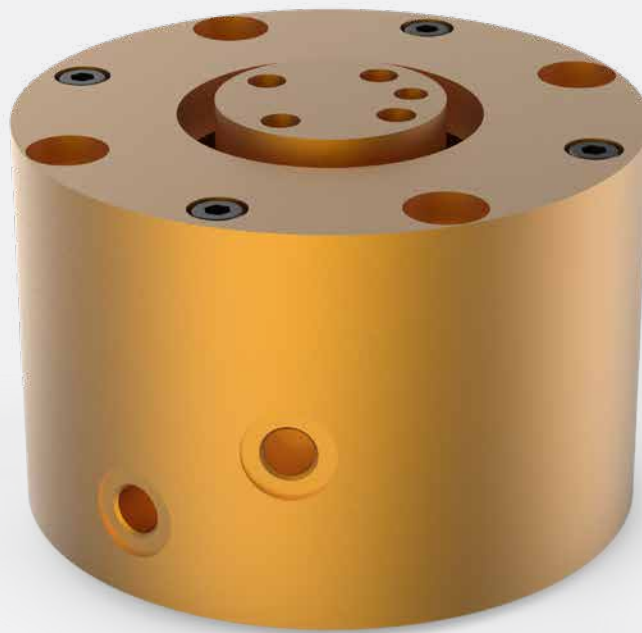


Service Manual

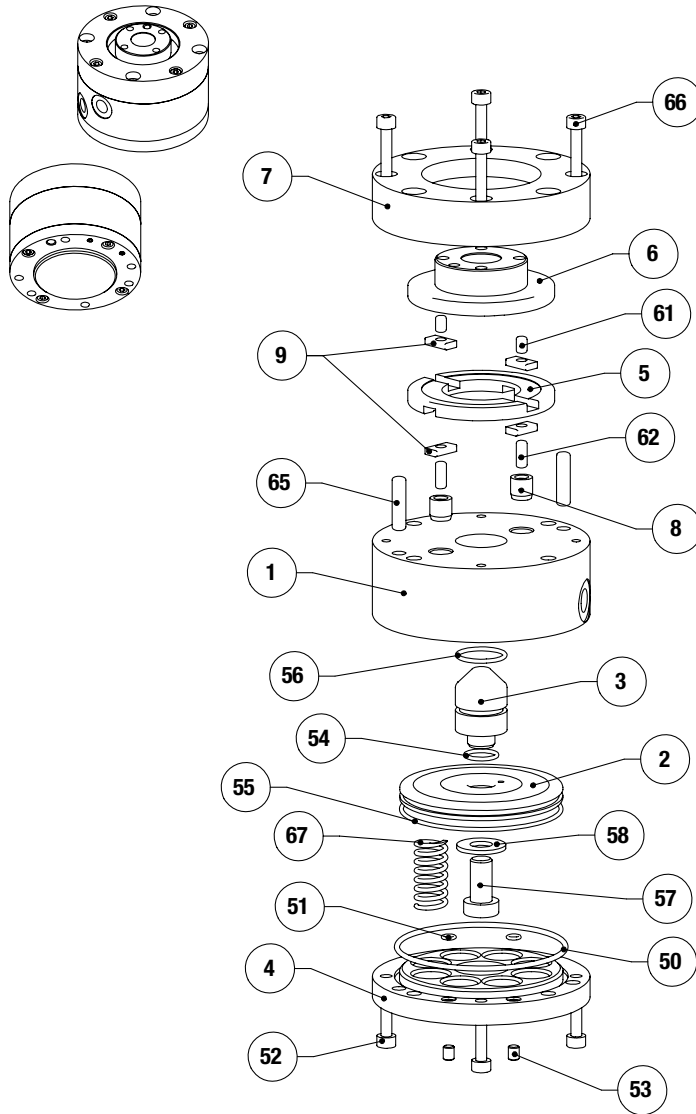
ROBOHAND | CH Series



WARNING: This is a controlled document. It is your responsibility to deliver this information to the end user of the Destaco Robohand product. Failure to deliver this could result in your liability for injury to the user or damage to the machine. For copies of this manual, call your Customer Service Representative at 1.248.836.6700

CH SERIES

Compliance Devices | Maintenance and Assembly Procedure



Item	Qty	Name
1	1	Body
2	1	Piston
3	1	Centering cone
4	1	Cap
5	1	Crossed ring
6	1	Output flange
7	1	Bottom case
8	2	Sleeve
9	4	Key
50	1	O-ring, Cap
51	2	O-ring, Cap
52	4	SS screw, Cap
53	2	SHC screw, Cap
54	1	O-ring, Piston
55	1	O-ring, Piston
56	1	O-ring, Centering cone
57	1	LHC screw, Piston
58	1	Washer, Piston
61	2	Pin, Key
62	2	Pin, Sleeve
65	2	Pin, Body
66	4	SHC screw, Flask
67	6	Spring

NOTE: Contact the Robohand Sales Department for a complete spare parts list with order numbers and prices.

Assembly Procedures

- 1) Press-in the bushing (#8) into the body (#1)
- 2) Insert the pins (#65) into the body (#1)
- 3) Lubricate and insert the pins (#62) into the bushings (#8)
- 4) Lubricate and insert the keys (#9) into the pins (#62)
- 5) Lubricate and assemble the crossed ring (#5) onto the body (#1).
The keys (#9) have to be positioned into the slots of the crossed ring
- 6) Insert the pins (#61) into the output flange (#6)
- 7) Lubricate and insert the keys (#9) into the pins (#61)
- 8) Assemble the sub assembly output flange and keys on the crossed ring (#5). The keys (#9) have to be positioned into the slots of the crossed ring
- 9) Mount the bottom case (#7) onto the body, positioning with the pins (#65).
- 10) Fasten the bottom case (#7) using the screws (#66) with thread locker
- 11) Insert the O-Ring (#56) into the centering cone (#3)
- 12) Insert the O-Ring (#54) into the inside groove of the piston (#2)
- 13) Insert the O-Ring (#55) into the outside groove of the piston (#2)
- 14) Assemble the piston (#2) with the centering cone (#3). For -RL option, the piston counterbore holes have to face the body counterbore holes. Opposite mounting for -RA option.
- 15) Fasten the centering cone (#3) with the piston (#2) using the washer (#58) and the screw (#57) with thread locker
- 16) For -RL option, insert the springs (#67) into the body and piston counterbore holes.
- 17) Insert the piston + centering cone sub assembly into the body
- 18) For -RA option, insert the springs (#67) into the cap and piston counterbore holes.
- 19) Insert the O-Ring (#50) into cap groove (#4)
- 20) Insert the O-Ring (#51) into counterbore holes of the cap (#4)
- 21) Screw the SS screws into the cap (#4) with thread locker
- 22) Locate and insert the cap (#4) into the body (#1) using the screws (#52) with thread locker.



Seal Kit
Items



Thread
Locker



Krytox™
Lubricant



Lightweight
Machine Oil



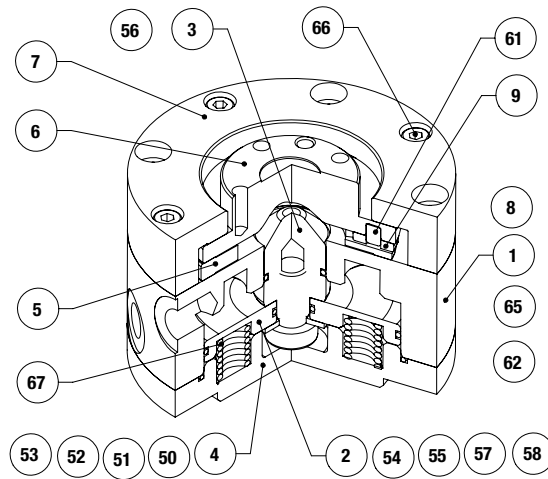
Teflon® Based
Grease



Super
Bonder

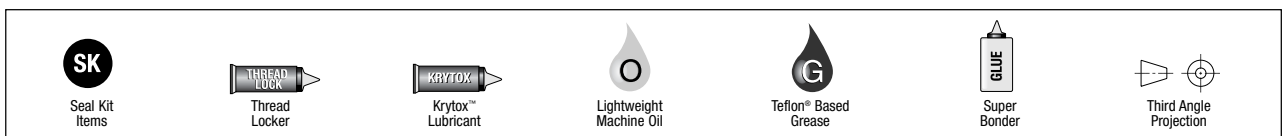


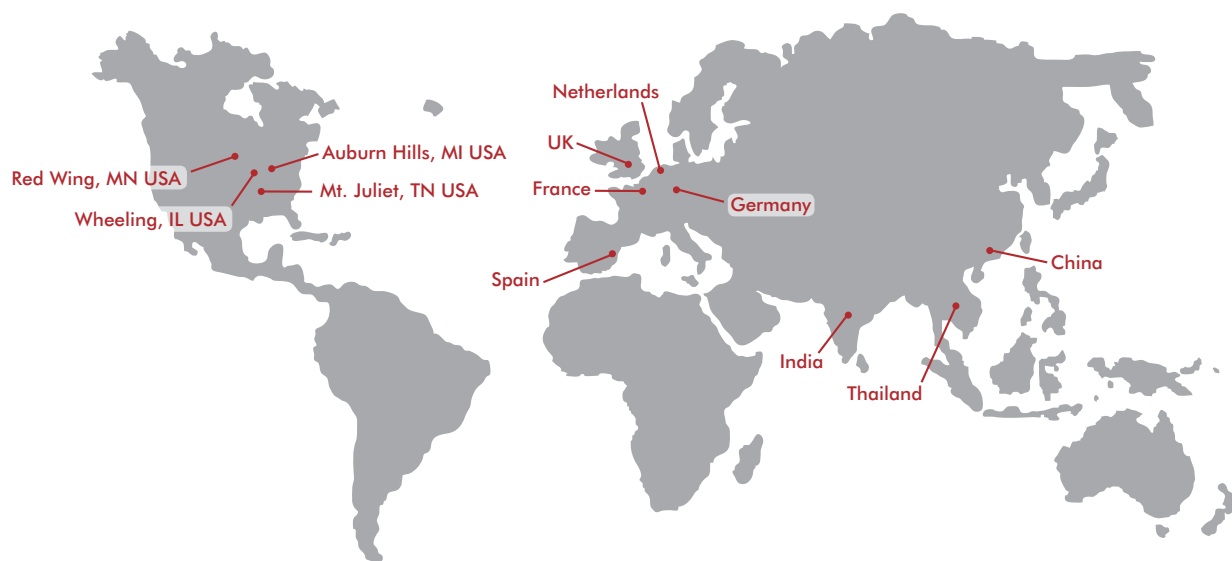
Third Angle
Projection



Item	Qty	Name
1	1	Body
2	1	Piston
3	1	Centering cone
4	1	Cap
5	1	Crossed ring
6	1	Output flange
7	1	Bottom case
8	2	Sleeve
9	4	Key
50	1	O-ring, Cap
51	2	O-ring, Cap
52	4	SS screw, Cap
53	2	SHC screw, Cap
54	1	O-ring, Piston
55	1	O-ring, Piston
56	1	O-ring, Centering cone
57	1	LHC screw, Piston
58	1	Washer, Piston
61	2	Pin, Key
62	2	Pin, Sleeve
65	2	Pin, Body
66	4	SHC screw, Flask
67	6	Spring

NOTE: Contact the Robohand Sales Department for a complete spare parts list with order numbers and prices.





GLOBAL LOCATIONS

NORTH AMERICA

Corporate Headquarters

Auburn Hills, Michigan
Toll Free: 1.888.DESTACO
Marketing: marketing@destaco.com

Global Technology Center

Auburn Hills, Michigan
Tel: 1.248.836.6700
Customer Service: customerservice@destaco.com

Mt. Juliet, Tennessee
Tel: 1.888.DESTACO
Customer Service: customerservice@destaco.com

Wheeling, Illinois
Tel: 1.800.645.5207
Customer Service: camco@destaco.com

Red Wing, Minnesota (Central Research Laboratories)
Tel: 651.385.2142
Customer Service: sales@centres.com

ASIA

Bangkok, Thailand
Tel: +66-2-326-0812
Customer Service: info@destaco.com

Shanghai, China
Tel: +86-21-6081-2888
Customer Service: china@destaco.com

Bangalore, India
Tel: +91-80-41123421-426
Customer Service: india@destaco.com

EUROPE

Oberursel, Germany
Tel: +49-6171-705-0
Customer Service: europe@destaco.com

Sainte Florine, France
Tel: +33-4-73545001
Customer Service: france@destaco.com

Wolverhampton, United Kingdom
Tel: +44-1902-797980
Customer Service: uk@destaco.com

Sant Boi de Llobregat, Spain
Tel: +34-936361680
Customer Service: spain@destaco.com

Uithoorn, Netherlands
Tel: +31-297285332
Customer Service: benelux@destaco.com