

82P25-2

Pneumatic Pin Clamp | Ordering and Technical Information

82P25-2 - 00 D8 XX

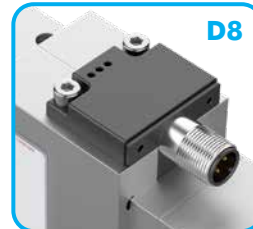
Size	Description
82P25-2	25 mm Cylinder (G1/8 and NPT 1/8 Ports)

Tip	Description
00	without centering pin
08-22	with customer specified round centering pin from Ø8-22 mm

Serial Number	Description
XX	Customer specified Base, Clamping Hook and Centering Pin <i>Must contact factory with specifications to complete order number</i>

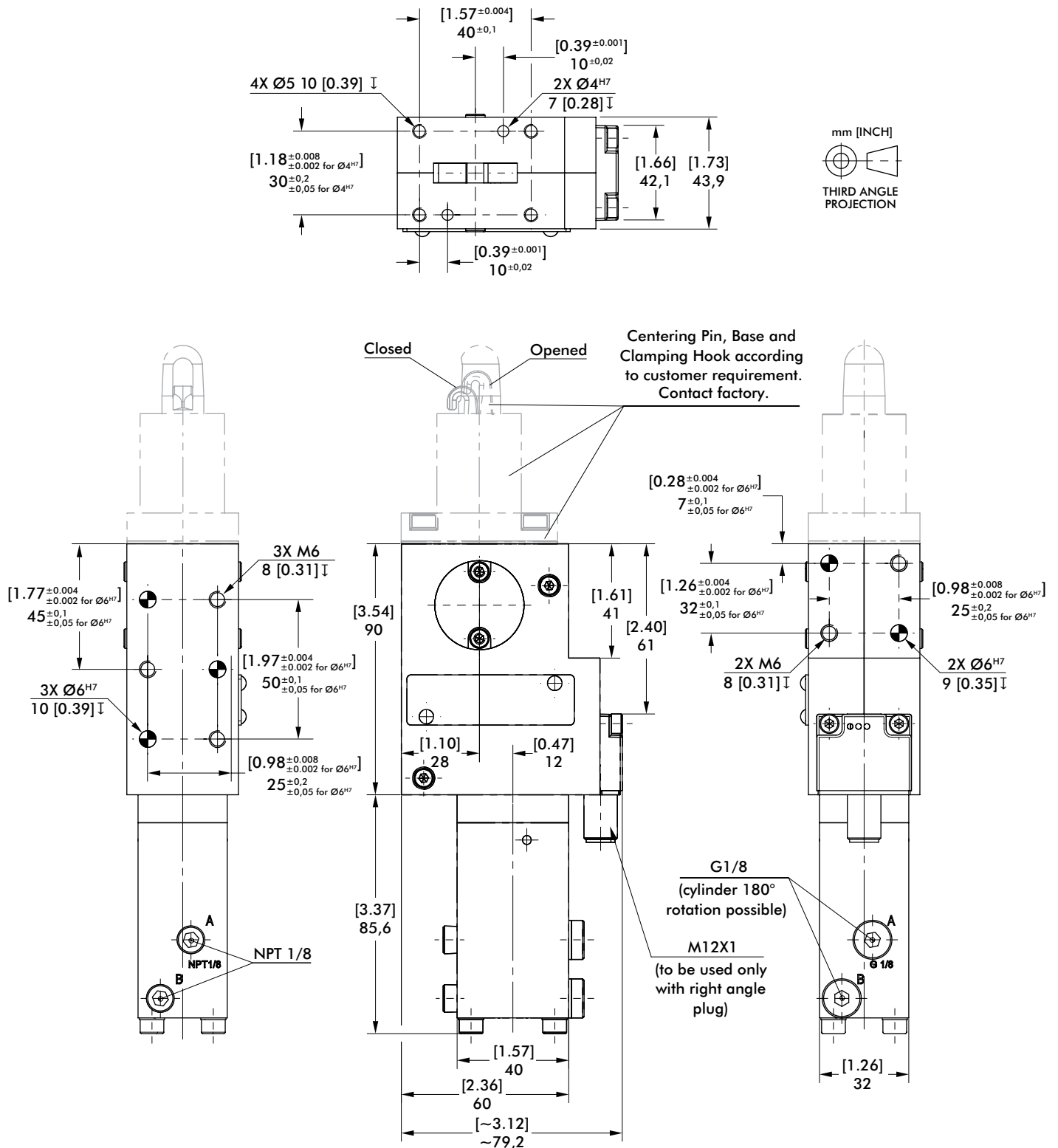


Sensor	Description
D8	Inductive Sensing System with M12x1 Connector (8EA-161-1)



82P25-2XX

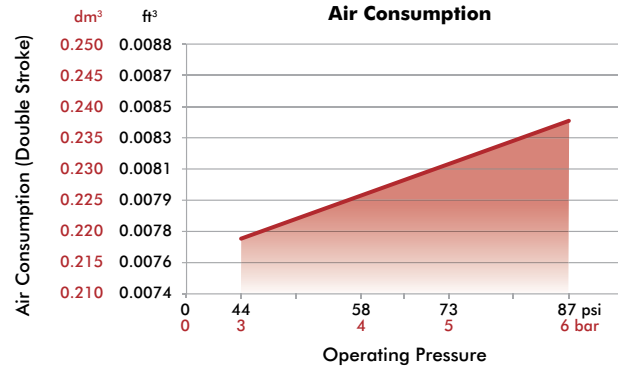
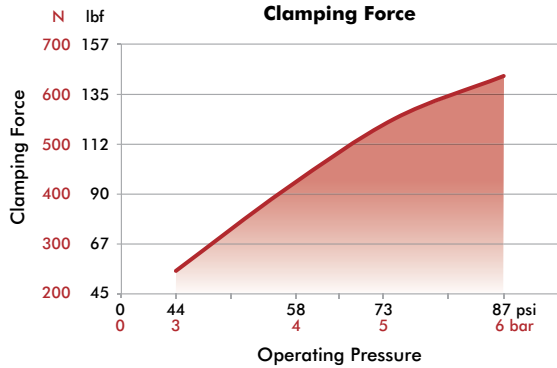
Specification	Unit	82P25-2
Max. Clamping Force @ 5 bar	[lbf] N	[124] 550
Max. Operating Pressure	bar [psi]	[87] 6
Piston Diameter	[in] mm	[1.57] 40
Air Consumption per Double Stroke @ 6 bar [87psi]	[in ³] liter	[15.26] 0,25
Weight	[lb] kg	[2.07] 0,94



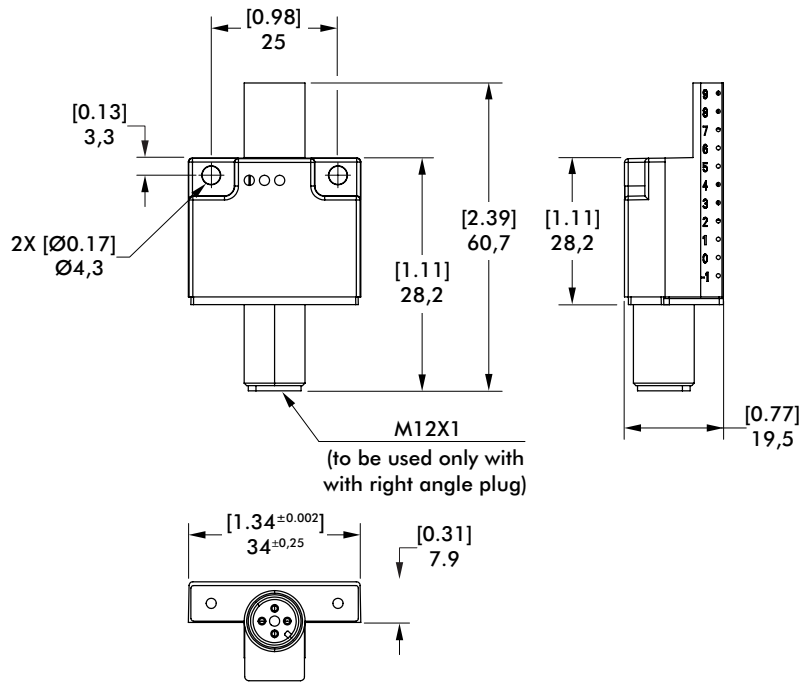
82P25-2 SENSORS

Pneumatic Pin Clamp | Dimensions and Technical Specifications

Clamping Force and Air Consumption

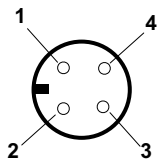


D8 Inductive Sensing System



Inductive Sensor Wiring Diagram

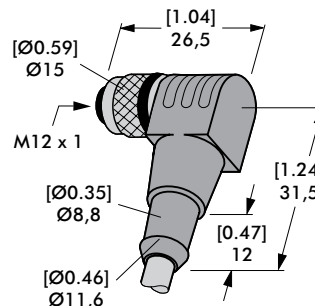
Sensing system immune to interference from AC / DC arc welding.



1-Common +
2-Open
3-Common -
4-Closed

Sensor Cable Accessories

Sensor Cables (1 connector & 5m cable)	Order no.
M12x1 connector, 90° angular, 4-pin	8EL-003-1



Angular Cable
8EL-003-1

